

ROWE BOAT — SABRE YACHTS



Builder: SABRE YACHTS

Year Built: 2018

Model: cruiser

Price: \$1,475,000 USD

Location: United States

LOA: 48' (14.63mm)

Beam: 15.33

Min Draft: 3' 9" (1.14mm)

Our experienced yacht broker, Andrey Shestakov, will help you choose and buy a yacht that best suits your needs **ROWE BOAT — SABRE YACHTS** from our catalogue. Presently, at Shestakov Yacht Sales Inc., we have a wide variety of yachts available on our sale's list. We also work in close contact with all the big yacht manufacturers from all over the world.

If you would like to buy a yacht **ROWE BOAT — SABRE YACHTS** or would like help answering any questions concerning purchasing, selling or chartering a yacht, please call **+1(954)274-4435**

TABLE OF CONTENTS

TABLE OF CONTENTS	2
SPECIFICATIONS	3
Overview	3
Basic Information	3
Dimensions	3
Speed, Capacities and Weight	3
Accommodations	4
Hull and Deck Information	4
Engine Information	4
PHOTOS	5
CONTACTS	17
Contact details	17
Telephones	17
Office hours	17
Address	17

SPECIFICATIONS

Overview

"ROWE BOAT" Is a one owner Volvo powered Sabre 48 built to cruise the Loop. Outfitted with extra refrigeration in the crew quarters, Spectra water maker, additional house batteries and a stand alone inverter, you can anchor out and avoid the generator if desired. Yacht Controller installed for single handling if necessary. Included in the sale is all the gear necessary for long term cruising and the AB tender. Factory options include: Hydraulic swim platform with tender mounts. Power sunroof over salon. Seakeeper 5. Crew quarters refrigeration. Side by side washer and dryer. Custom galley with double drawer refrigeration and more. Sabre build sheet provided on request.

Basic Information

Category: cruiser

Sub Category: Salon Express

Model Year: 2018

Year Built: 2018

Country: United States

Dimensions

LOA: 48' (14.63mm)

Beam: 15.33

Min Draft: 3' 9" (1.14mm)

Speed, Capacities and Weight

Water Capacity: 160 Gallons

Holding Tank: 70 Gal Gallons

Fuel Capacity: 520 Gal Gallons

Accommodations

Total Cabins: 2

Total Berths: 2

Total Heads: 2

Hull and Deck Information

Hull Material: Fiberglass

Hull Configuration: Deep Vee

Engine Information

Engines: 2

Manufacturer: Volvo Penta

Engine Type: Inboard

Fuel Type: Diesel

PHOTOS









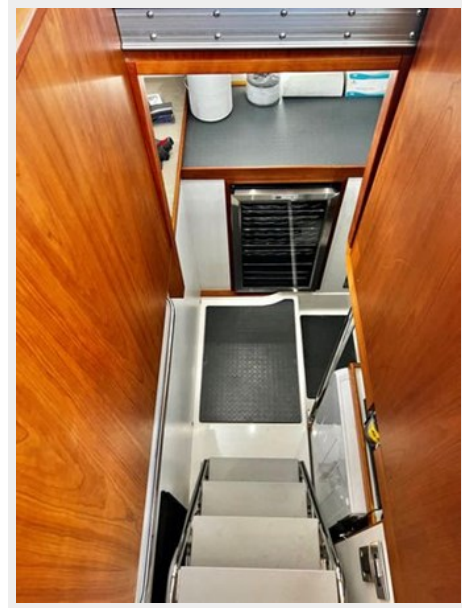


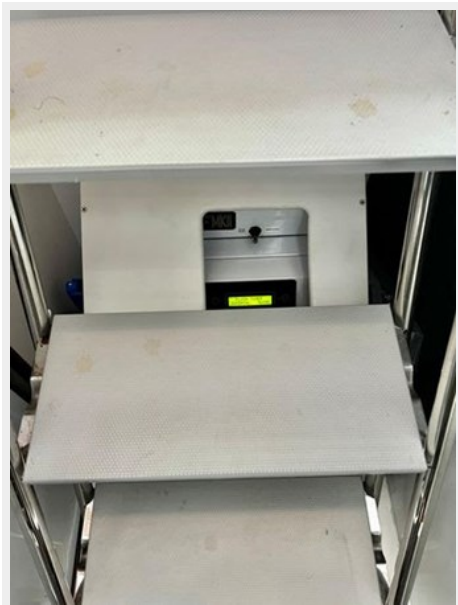


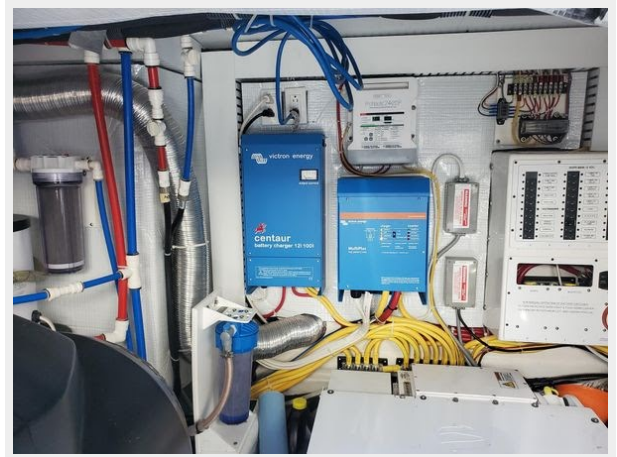












CONTACTS

Andrey Shestakov, leading yacht broker of the sales department of Shestakov Yacht Sales Inc. Shestakov Yacht Sales Inc., the official representative of the Miami/Fort Lauderdale FL headquarters.

Contact details

Email: andrey@shestakovyachtsales.com

Web: shestakovyachtsales.com/en/

Telephones

USA: +1(954)274-4435

Office hours

Monday – Saturday: **9:00 - 21:00** EDT

Sunday: **closed**

Address



Harbour Towne Marina, 850 NE 3rd St,
STE 213, Dania, FL 33004