

SINE METU — RANGER TUGS



Builder: RANGER TUGS

Year Built: 2019

Model: trawler

Price: \$135,000 USD

Location: United States

LOA: 27' 11" (8.51mm)

Beam: 8.5

Min Draft: 1' 7" (0.48mm)

Max Draft: 2' 6" (0.76mm)

Cruise Speed: 29.55 Knots Kts. (34 MPH)

Our experienced yacht broker, Andrey Shestakov, will help you choose and buy a yacht that best suits your needs **Sine Metu — RANGER TUGS** from our catalogue. Presently, at Shestakov Yacht Sales Inc., we have a wide variety of yachts available on our sale's list. We also work in close contact with all the big yacht manufacturers from all over the world.

If you would like to buy a yacht **Sine Metu — RANGER TUGS** or would like help answering any questions concerning purchasing, selling or chartering a yacht, please call **+1(954)274-4435**

TABLE OF CONTENTS

TABLE OF CONTENTS	2
SPECIFICATIONS	3
Overview	3
Basic Information	3
Dimensions	3
Speed, Capacities and Weight	4
Accommodations	4
Hull and Deck Information	4
Engine Information	4
PHOTOS	5
CONTACTS	11
Contact details	11
Telephones	11
Office hours	11
Address	11

SPECIFICATIONS

Overview

The first thing you will notice when looking at the popular Ranger Tugs R-23 is the dramatic, curved windshield and visor, accompanied by several overhead skylights. There is no shortage of light or visibility onboard the R-23, which incorporates four opening roof hatches, sliding side windows, and an opening glass bulkhead, providing an open and airy feeling inside and out. Opening portlights also allow for a nice cross breeze in the cabin. The R-23 is powered by a 200 HP Yamaha outboard. The forward cabin on the R-23 has plenty of room for sitting around the teak table, separate sleeping for two or sleeping two together with the filler-cushion. The mid berth is great for kids or storage, and the dinette converts to a sleeper as the third berth. The well-appointed galley on the R-23 is standard with refrigerator/freezer, cooktop, and microwave. The forward head includes a marine toilet with holding tank, shower, sink, and mirror. The Ranger Tugs R-23 comes standard with a Garmin 943xsv GPS chartplotter with sonar and is available with optional xHD radar. VHF to stay in touch, illuminated compass, cabin night light, cockpit and exterior side trail lighting, and our built-in safety trailering lights (brake, turn, and reverse) are all standard equipment making the R-23 ready to cruise. The cockpit on the R-23 is built to fish and ready to entertain with standard rod holders, optional downrigger pads & outlets, and a folding double seat. The R-23 is perfect for overnighting or extended cruises. It incorporates many of the same amenities as a larger cruising yacht that until now were not offered on a boat of her size and price point. Whether you are new to boating or a seasoned captain, the R-23 is the perfect boat for your next adventure. Get on the water today in the Ranger Tugs R-23! 2021 Venture Trailer * Included

Basic Information

Category: trawler

Sub Category: Tug

Model Year: 2019

Year Built: 2019

Country: United States

Dimensions

LOA: 27' 11" (8.51mm)

Beam: 8.5

Min Draft: 1' 7" (0.48mm)

Max Draft: 2' 6" (0.76mm)

Speed, Capacities and Weight

Cruise Speed: 29.55 Knots Kts. (34 MPH) **Water Capacity:** 22 Gallons

Holding Tank: 11 Gal Gallons **Fuel Capacity:** 75 Gal Gallons

Accommodations

Total Heads: 1

Hull and Deck Information

Hull Material: Fiberglass

Engine Information

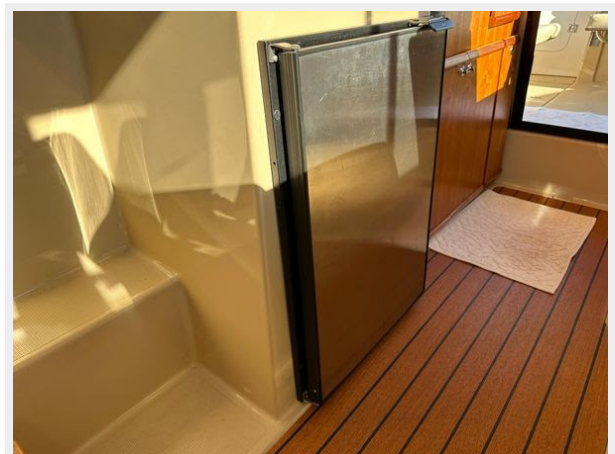
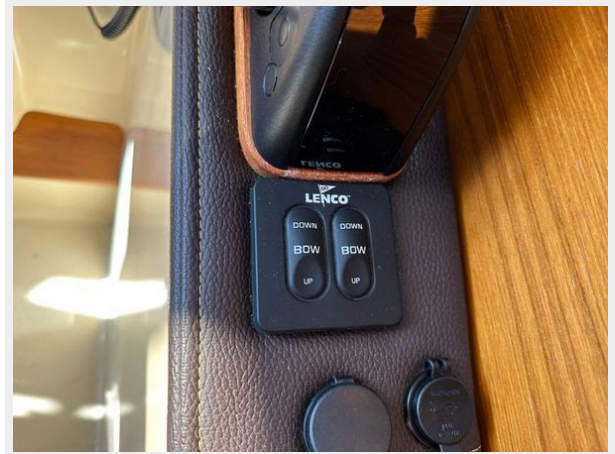
Engines: 1 **Manufacturer:** Yamaha

Engine Type: Outboard **Fuel Type:** Gas

PHOTOS

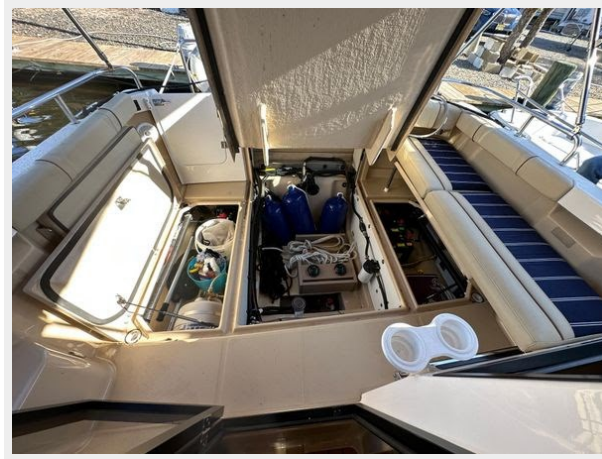












CONTACTS

Andrey Shestakov, leading yacht broker of the sales department of Shestakov Yacht Sales Inc. Shestakov Yacht Sales Inc., the official representative of the Miami/Fort Lauderdale FL headquarters.

Contact details

Email: andrey@shestakovyachtsales.com

Web: shestakovyachtsales.com/en/

Telephones

USA: +1(954)274-4435

Office hours

Monday – Saturday: **9:00 - 21:00** EDT

Sunday: **closed**

Address



Harbour Towne Marina, 850 NE 3rd St,
STE 213, Dania, FL 33004