

2008 SEA RAY 280 SUNDANCER — SEA RAY



Builder: SEA RAY

Year Built: 2008

Model: cruiser

Price: \$74,900 USD

Location: United States

LOA: 28' (8.53mm)

Beam: 9.41

Min Draft: 1' 10" (0.56mm)

Max Draft: 3' 3" (0.99mm)

Our experienced yacht broker, Andrey Shestakov, will help you choose and buy a yacht that best suits your needs **2008 Sea Ray 280 Sundancer — SEA RAY** from our catalogue. Presently, at Shestakov Yacht Sales Inc., we have a wide variety of yachts available on our sale's list. We also work in close contact with all the big yacht manufacturers from all over the world.

If you would like to buy a yacht **2008 Sea Ray 280 Sundancer — SEA RAY** or would like help answering any questions concerning purchasing, selling or chartering a yacht, please call **+1(954)274-4435**

TABLE OF CONTENTS

TABLE OF CONTENTS	2
SPECIFICATIONS	3
Overview	3
Basic Information	3
Dimensions	3
Speed, Capacities and Weight	3
Accommodations	4
Hull and Deck Information	4
Engine Information	4
PHOTOS	5
CONTACTS	13
Contact details	13
Telephones	13
Office hours	13
Address	13

SPECIFICATIONS

Overview

For a classic combination of beauty and power, just step aboard this dynamic 280 Sundancer. It's powered by twin Mercruiser 5.0 liter, 260 hp freshwater cooled sterndrives (529 hours) with digital throttle and shift. Additional amenities include a Kohler 5.0 KW generator with 140 hours, Garmin 7608 XSV with Garmin xHD Radar, Icom VHF radio, flatscreen TV, electric burner stove, microwave and hot and cold water. For canvas, the boat has a bimini and camper top as well as a cockpit cover. It features a sporty, molded-fiberglass spoiler with overhead lighting, plus an extended swim platform and concealed swim ladder. This boat has been kept in excellent condition by a detail oriented owner. There's a big difference in this model between the Mercruiser 4.3 liter (cable throttle & shift) and the Mercruiser 5.0 liter (digital throttle and shift). The freshwater cooling should make this a no brainer when looking at this model.

Basic Information

Category: cruiser

Sub Category: Express

Model Year: 2008

Year Built: 2008

Country: United States

Dimensions

LOA: 28' (8.53mm)

Beam: 9.41

Min Draft: 1' 10" (0.56mm)

Max Draft: 3' 3" (0.99mm)

Speed, Capacities and Weight

Water Capacity: 28 Gallons

Holding Tank: 28 Gal Gallons

Fuel Capacity: 100 Gal Gallons

Accommodations

Total Berths: 4

Total Heads: 1

Hull and Deck Information

Hull Material: Fiberglass

Hull Configuration: Deep Vee

Engine Information

Engines: 2

Manufacturer: Mercruiser

Engine Type: I/O

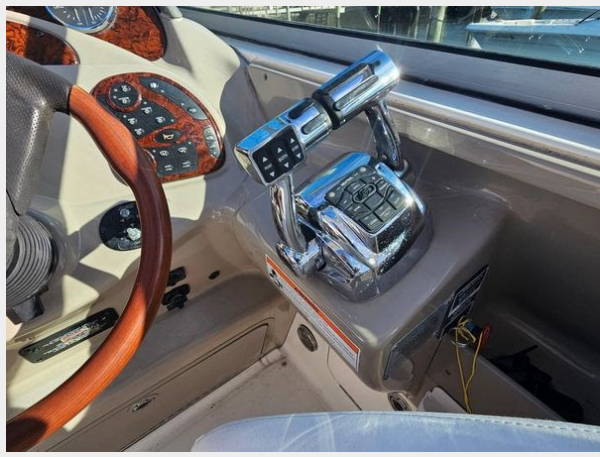
Fuel Type: Gas

PHOTOS





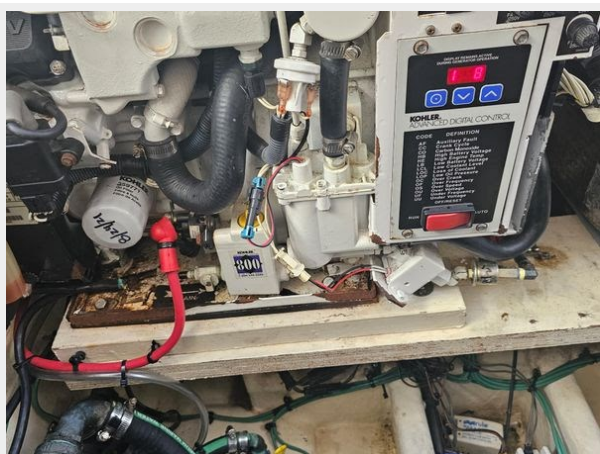












CONTACTS

Andrey Shestakov, leading yacht broker of the sales department of Shestakov Yacht Sales Inc. Shestakov Yacht Sales Inc., the official representative of the Miami/Fort Lauderdale FL headquarters.

Contact details

Email: andrey@shestakovyachtsales.com

Web: shestakovyachtsales.com/en/

Telephones

USA: +1(954)274-4435

Office hours

Monday – Saturday: **9:00 - 21:00** EDT

Sunday: **closed**

Address



Harbour Towne Marina, 850 NE 3rd St,
STE 213, Dania, FL 33004