

ENCORE — BACK COVE



Builder: BACK COVE

Year Built: 2011

Model: cruiser

Price: \$234,000 USD

Location: United States

LOA: 30' 6" (9.3mm)

Beam: 11.16

Cruise Speed: 21.72 Knots Kts. (25 MPH)

Max Speed: 24.33 Knots Kts. (28 MPH)

Our experienced yacht broker, Andrey Shestakov, will help you choose and buy a yacht that best suits your needs **Encore — BACK COVE** from our catalogue. Presently, at Shestakov Yacht Sales Inc., we have a wide variety of yachts available on our sale's list. We also work in close contact with all the big yacht manufacturers from all over the world.

If you would like to buy a yacht **Encore — BACK COVE** or would like help answering any questions concerning purchasing, selling or chartering a yacht, please call **+1(954)274-4435**

TABLE OF CONTENTS

TABLE OF CONTENTS	2
SPECIFICATIONS	3
Overview	3
Basic Information	3
Dimensions	3
Speed, Capacities and Weight	3
Accommodations	4
Hull and Deck Information	4
Engine Information	4
PHOTOS	5
CONTACTS	14
Contact details	14
Telephones	14
Office hours	14
Address	14

SPECIFICATIONS

Overview

Brand New Yanmar 8LV370 with only 2 HoursThe back Cove 30 is a popular couples cruising yacht. She has great sight lines on the elevated helm deck seating, and economical ride, offering various seating layout options. The port side settee has a high forward facing mates seat that sits two, which can be converted to a large L-shaped settee for dockside entertainment, and then converts into a bed for an overnight stay. One enters the cockpit through a transom door which has two molded seats, port and starboard, each with their own tables, access to the lazarette for storage, and fresh water shower. Moving forward to the helm deck, there are two settees port and starboard, mates seat to port and a helm station to starboard. The helm station has the upgraded Stidd helm chair. Moving forward to the cabin through a companionway, a wet head lies to port, a functional galley to starboard and master berth all the way forward.

Basic Information

Category: cruiser

Sub Category: Express

Model Year: 2011

Year Built: 2011

Country: United States

Dimensions

LOA: 30' 6" (9.3mm)

Beam: 11.16

Speed, Capacities and Weight

Cruise Speed: 21.72 Knots Kts. (25 MPH)

Max Speed: 24.33 Knots Kts. (28 MPH)

Water Capacity: 40 Gallons

Holding Tank: 30 Gal Gallons

Fuel Capacity: 160 Gal Gallons

Accommodations

Total Heads: 1

Hull and Deck Information

Hull Material: Fiberglass

Hull Configuration: Deep Vee

Engine Information

Engines: 1

Manufacturer: Yanmar

Engine Type: Inboard

Fuel Type: Diesel

PHOTOS



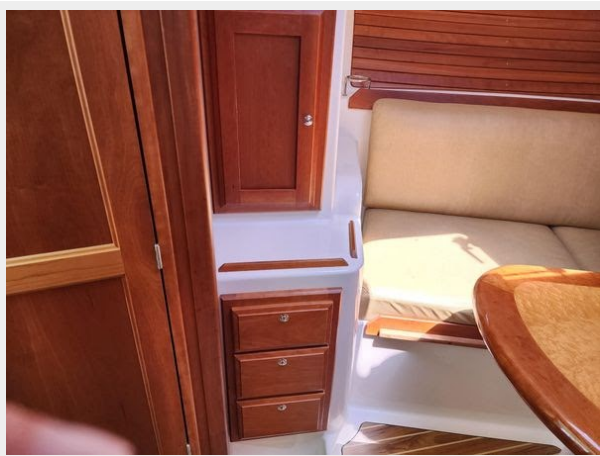




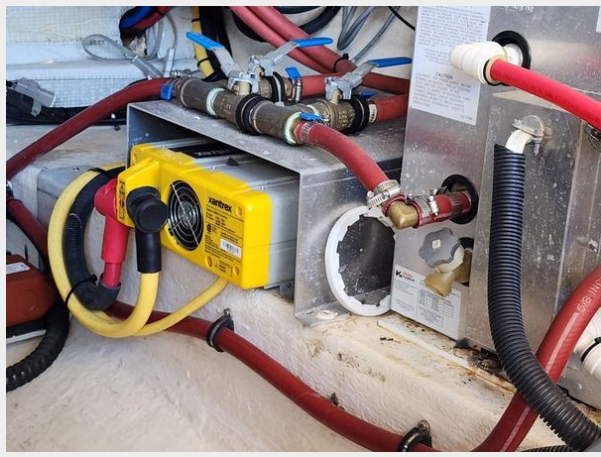












CONTACTS

Andrey Shestakov, leading yacht broker of the sales department of Shestakov Yacht Sales Inc. Shestakov Yacht Sales Inc., the official representative of the Miami/Fort Lauderdale FL headquarters.

Contact details

Email: andrey@shestakovyachtsales.com

Web: shestakovyachtsales.com/en/

Telephones

USA: +1(954)274-4435

Office hours

Monday – Saturday: **9:00 - 21:00** EDT

Sunday: **closed**

Address



Harbour Towne Marina, 850 NE 3rd St,
STE 213, Dania, FL 33004