

ENHYDRA — CHESAPEAKE CUSTOM



Builder: CHESAPEAKE CUSTOM

Year Built: 1983

Model: Passenger

Price: \$795,000 USD

Location: United States

LOA: 112' (34.14mm)

Beam: 29

Min Draft: 6' 7" (2.01mm)

Max Draft: 6' 7" (2.01mm)

Cruise Speed: 7 Knots Kts. (8 MPH)

Our experienced yacht broker, Andrey Shestakov, will help you choose and buy a yacht that best suits your needs **Enhydra — CHESAPEAKE CUSTOM** from our catalogue. Presently, at Shestakov Yacht Sales Inc., we have a wide variety of yachts available on our sale's list. We also work in close contact with all the big yacht manufacturers from all over the world.

If you would like to buy a yacht **Enhydra — CHESAPEAKE CUSTOM** or would like help answering any questions concerning purchasing, selling or chartering a yacht, please call **+1(954)274-4435**

TABLE OF CONTENTS

TABLE OF CONTENTS	2
SPECIFICATIONS	5
Overview	5
Basic Information	5
Dimensions	5
Speed, Capacities and Weight	6
Accommodations	6
Hull and Deck Information	6
Engine Information	6
PHOTOS	7
image-2806570 (59)	7
image-2806570 (58)	7
image-2806570 (57)	7
image-2806570 (56)	7
image-2806570 (55)	7
image-2806570 (54)	7
image-2806570 (53)	8
image-2806570 (52)	8
image-2806570 (51)	8
image-2806570 (50)	8
image-2806570 (49)	8
image-2806570 (48)	8
image-2806570 (47)	9
image-2806570 (46)	9
image-2806570 (45)	9
image-2806570 (44)	9
image-2806570 (42)	9
image-2806570 (43)	9

image-2806570 (41)	10
image-2806570 (40)	10
image-2806570 (38)	10
image-2806570 (39)	10
image-2806570 (37)	10
image-2806570 (36)	10
image-2806570 (35)	11
image-2806570 (34)	11
image-2806570 (33)	11
image-2806570 (32)	11
image-2806570 (31)	11
image-2806570 (30)	11
image-2806570 (29)	12
image-2806570 (28)	12
image-2806570 (27)	12
image-2806570 (26)	12
image-2806570 (25)	12
image-2806570 (24)	12
image-2806570 (23)	13
image-2806570 (22)	13
image-2806570 (21)	13
image-2806570 (20)	13
image-2806570 (19)	13
image-2806570 (18)	13
image-2806570 (17)	14
image-2806570 (16)	14
image-2806570 (14)	14
image-2806570 (15)	14
image-2806570 (13)	14

image-2806570 (12)	14
image-2806570 (11)	15
image-2806570 (10)	15
image-2806570 (9)	15
image-2806570 (8)	15
image-2806570 (7)	15
image-2806570 (6)	15
image-2806570 (5)	15
image-2806570 (4)	15
image-2806570 (3)	16
image-2806570 (2)	16
image-2806570 (1)	16
image-2806570	16
CONTACTS	17
Contact details	17
Telephones	17
Office hours	17
Address	17

SPECIFICATIONS

Overview

The vessel "Enhydra", bearing U.S. Document No. 654894 and Hull No. D-301, was constructed by Chesapeake Shipbuilding in Maryland, of steel in 1983. The vessel is a twin screw, diesel powered, research vessel.

Enhydra has been used as a Kid's Science Camp for the past few years to study Marine Life. She has 24 cabins on two decks, 22 staterooms, a lab, a laundry room and a galley. She sleeps 47 - 38 passengers and 9 crew members.

There is an all electric commercial galley with 2 industrial refrigerators, oven, fryer, griddle, four hot-plates, two stainless steel cabinets, two stainless steel sinks (one is three compartment for washing), commercial dishwasher, two chafing tables, ice maker, disposal two 10-cubic ft. refrigerators

Basic Information

Category: Passenger

Sub Category: Passenger

Model Year: 1983

Year Built: 1983

Refit Type: Re-power

Country: United States

Dimensions

LOA: 112' (34.14mm)

Beam: 29

Min Draft: 6' 7" (2.01mm)

Max Draft: 6' 7" (2.01mm)

Speed, Capacities and Weight

Cruise Speed: 7 Knots Kts. (8 MPH)

Gross Tonnage: 378 Pounds

Water Capacity: 6000 Gallons

Holding Tank: 2000 Gal Gallons

Fuel Capacity: 5600 Gal Gallons

Accommodations

Total Cabins: 24

Total Berths: 47

Sleeps: 38

Total Heads: 22

Crew Cabin: 9

Crew Heads: 2

Hull and Deck Information

Hull Material: Steel

Deck Material: Steel

Hull Configuration: Monohull

Hull Color: grey/white

Engine Information

Engines: 2

Manufacturer: Caterpillar

Fuel Type: Diesel

PHOTOS

image-2806570 (59)



image-2806570 (58)



image-2806570 (57)



image-2806570 (56)

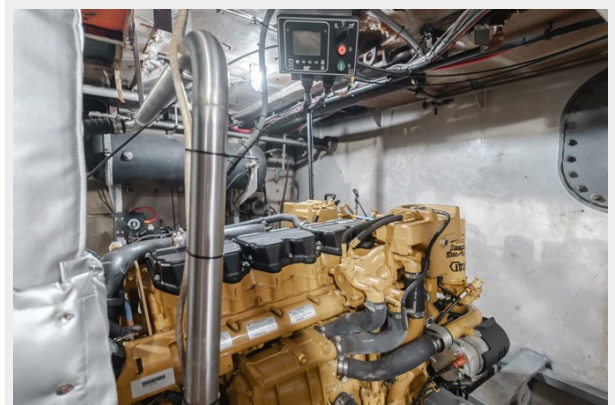


image-2806570 (55)



image-2806570 (54)



image-2806570 (53)



image-2806570 (52)



image-2806570 (51)



image-2806570 (50)



image-2806570 (49)



image-2806570 (48)



image-2806570 (47)

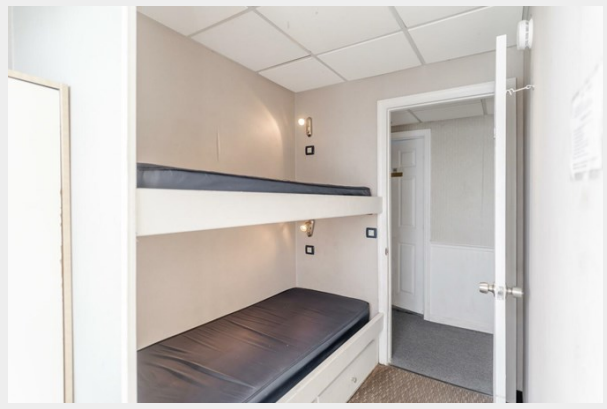


image-2806570 (46)



image-2806570 (45)



image-2806570 (44)



image-2806570 (43)

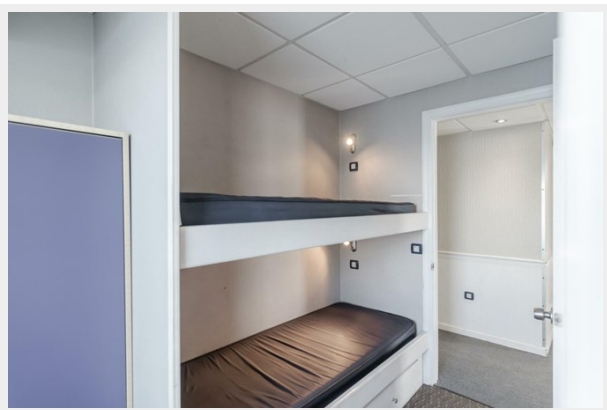


image-2806570 (42)



image-2806570 (41)

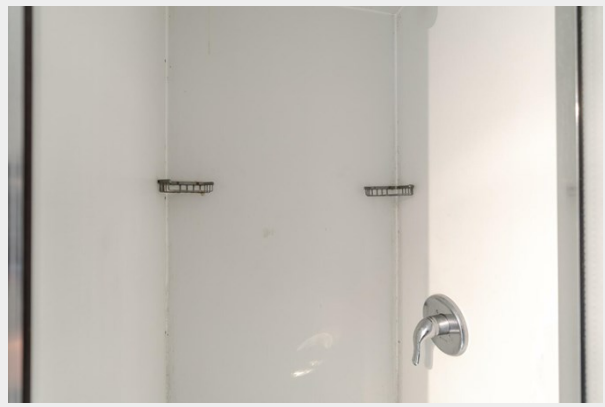


image-2806570 (40)

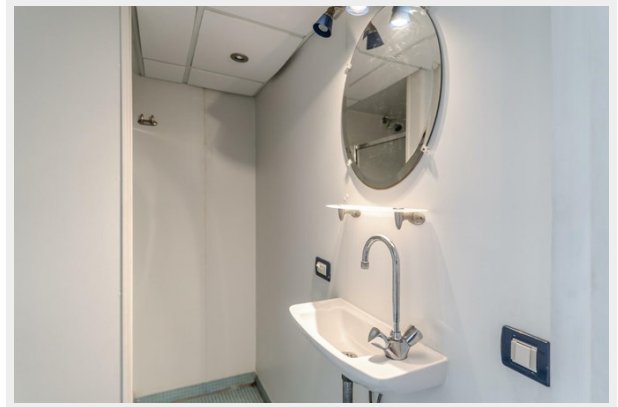


image-2806570 (38)



image-2806570 (39)



image-2806570 (37)

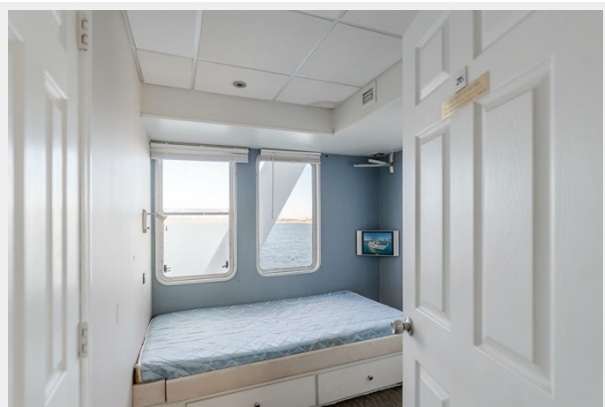


image-2806570 (36)



image-2806570 (35)

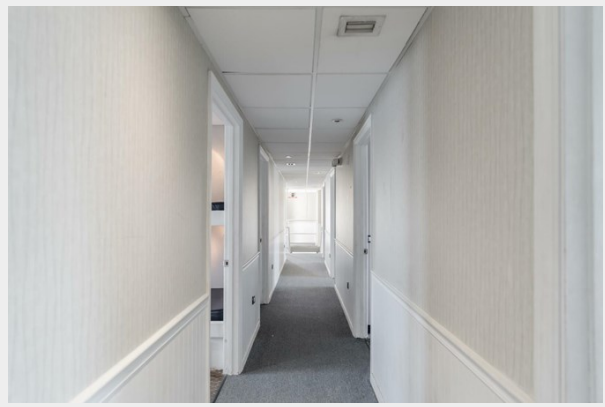


image-2806570 (34)



image-2806570 (33)



image-2806570 (32)



image-2806570 (31)



image-2806570 (30)



image-2806570 (29)



image-2806570 (28)



image-2806570 (27)



image-2806570 (26)

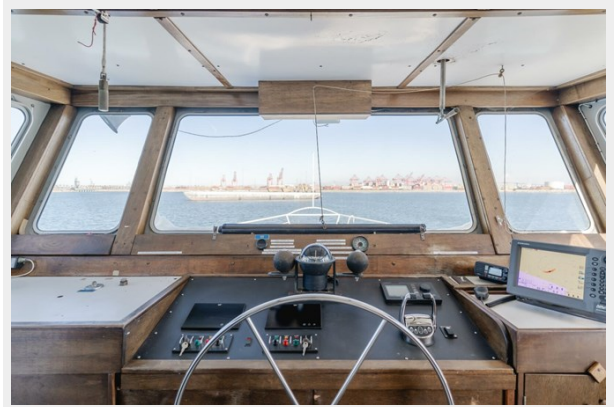


image-2806570 (25)



image-2806570 (24)

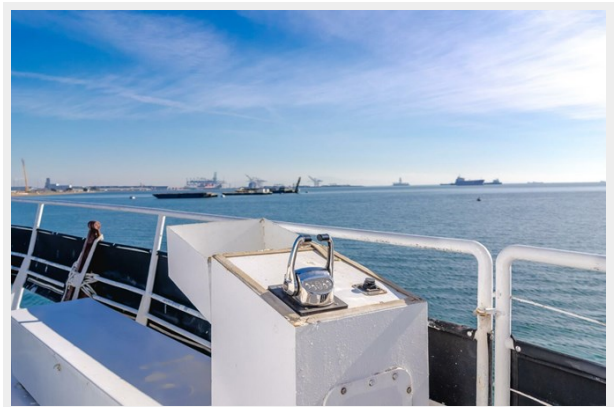


image-2806570 (23)

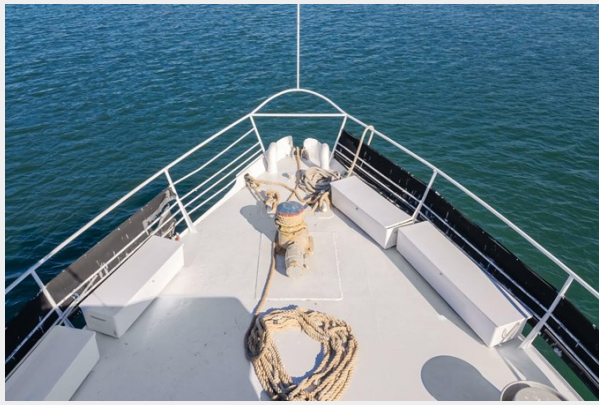


image-2806570 (22)



image-2806570 (21)

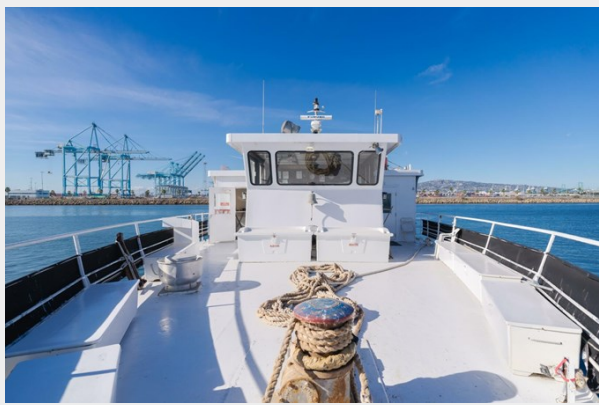


image-2806570 (20)

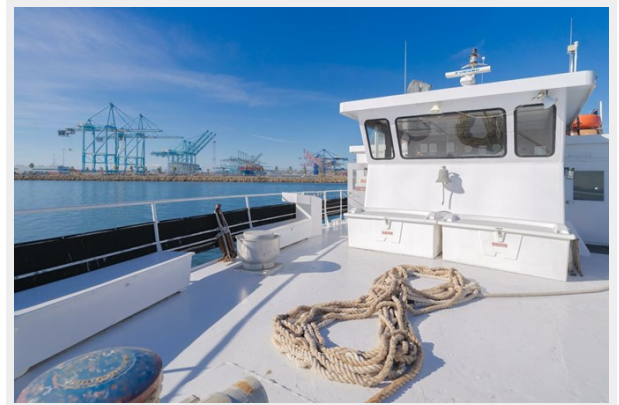


image-2806570 (19)



image-2806570 (18)

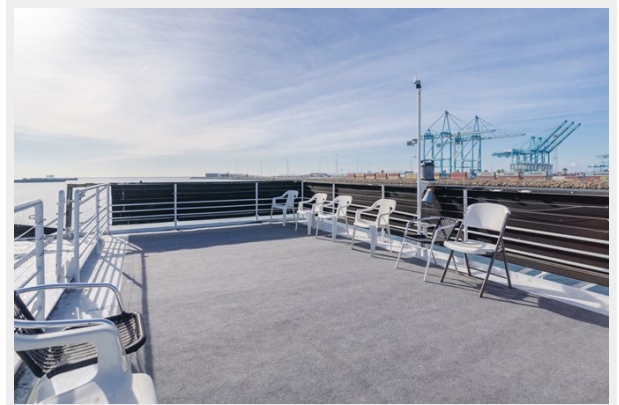


image-2806570 (17)



image-2806570 (16)

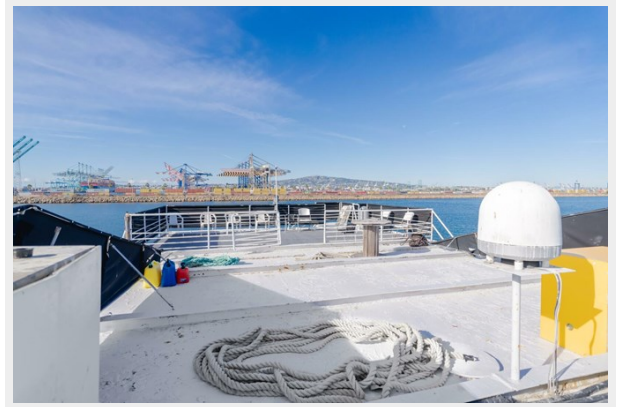


image-2806570 (15)

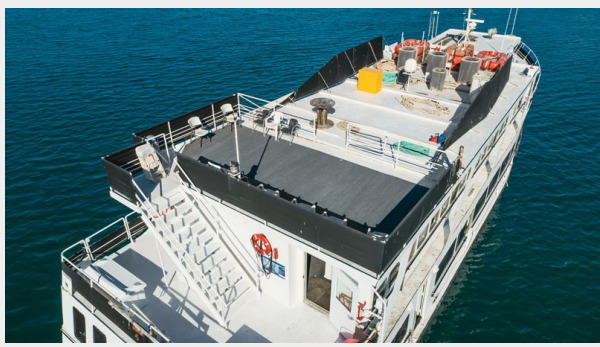


image-2806570 (14)

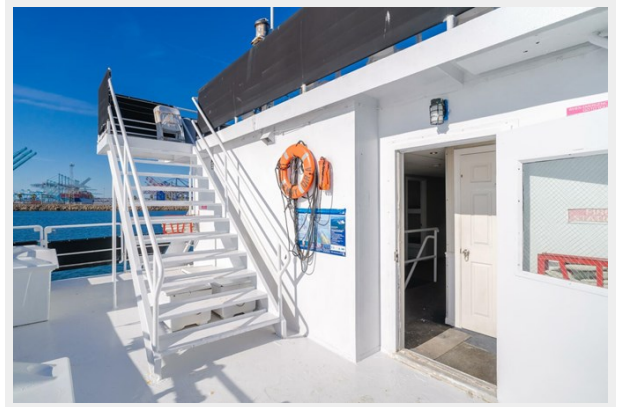


image-2806570 (13)



image-2806570 (12)



image-2806570 (11)



image-2806570 (10)



image-2806570 (9)

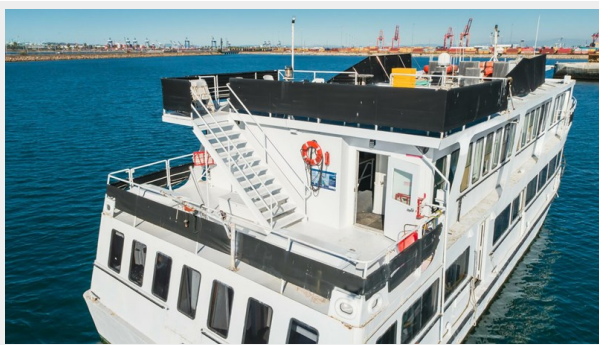


image-2806570 (8)



image-2806570 (7)



image-2806570 (6)



image-2806570 (5)



image-2806570 (4)



image-2806570 (3)

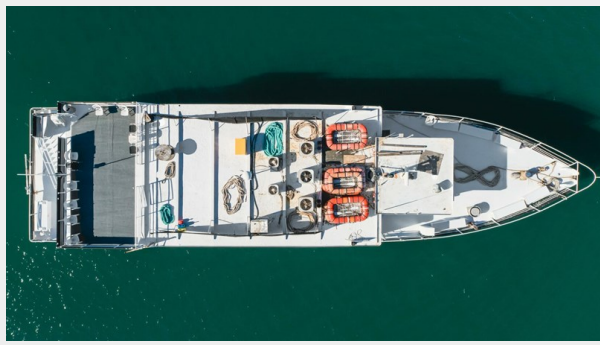


image-2806570 (2)



image-2806570 (1)



image-2806570



CONTACTS

Andrey Shestakov, leading yacht broker of the sales department of Shestakov Yacht Sales Inc. Shestakov Yacht Sales Inc., the official representative of the Miami/Fort Lauderdale FL headquarters.

Contact details

Email: andrey@shestakovyachtsales.com

Web: shestakovyachtsales.com/en/

Telephones

USA: +1(954)274-4435

Office hours

Monday – Saturday: **9:00 - 21:00** EDT

Sunday: **closed**

Address



Harbour Towne Marina, 850 NE 3rd St,
STE 213, Dania, FL 33004