

RASCAL — CARROLL MARINE



Builder: CARROLL MARINE

Year Built: 1998

Model: Racing Sailboat

Price: \$59,999 CAD

Location: Canada

LOA: 40' 9" (12.42mm)

Beam: 13.25

Min Draft: 8' 6" (2.59mm)

Max Draft: 8' 6" (2.59mm)

Our experienced yacht broker, Andrey Shestakov, will help you choose and buy a yacht that best suits your needs **RASCAL — CARROLL MARINE** from our catalogue. Presently, at Shestakov Yacht Sales Inc., we have a wide variety of yachts available on our sale's list. We also work in close contact with all the big yacht manufacturers from all over the world.

If you would like to buy a yacht **RASCAL — CARROLL MARINE** or would like help answering any questions concerning purchasing, selling or chartering a yacht, please call **+1(954)274-4435**

TABLE OF CONTENTS

TABLE OF CONTENTS	2
SPECIFICATIONS	5
Overview	5
Basic Information	5
Dimensions	5
Speed, Capacities and Weight	6
Hull and Deck Information	6
Engine Information	6
PHOTOS	7
At dock - from stern FE8FEF80AE	7
At dock - full rig height shot 04B3CA	7
At dock from port bow DD0F1E	7
At dock - port bow DA4A137ED	7
At dock from port quarter C46C4	8
Cockpit from coachroof IMG_3565	8
Port deck from aft IMG_3564	8
Port pit from cockpit IMG_3566	8
Stbd pit from cockpit IMG_3567	9
Stem profile AAEEA3AD	9
Custom helm pedestal IMG_1859	9
Hub for new steering wheel IMG_1862	9
Mast partner hardware IMG_1860	10
Stbd chainplate IMG_1864	10
Stbd near chainplate IMG_1863	10
Wheel well in cockpit IMG_1861	10
From bow IMG_1840	11
Stbd forward hull IMG_1839	11
From stbd quarter IMG_1838	11

Fin & bulb IMG_1836	11
Sail drive & partial fin IMG_1835	12
Rudder IMG_1837	12
Cradle IMG_3581	12
Port bunks IMG_3591	12
Interior - port aft looking fwd IMG_3598	13
Bunks - port side IMG_3574	13
Port aft IMG_1844	13
Stbd aft IMG_1848	13
Stbd aft pipe berths IMG_3602	14
Stbd - pipe berths IMG_3578	14
Spin pole by pipe berths IMG_3603	14
Running rigging CEC0D1	14
Interior - stbd aft looking fwd IMG_3597	15
Water bladder tank IMG_1843	15
Nav station IMG_3594	15
Battery - under bunk stbd IMG_3577	15
Nav stn - 12V panel IMG_3595	16
Nav stn - engine gauges IMG_3601	16
Under cockpit - systems IMG_3592	16
Nav stn - stereo IMG_3596	16
Steering cables sheaves IMG_1847	17
Fuel tank IMG_1846	17
Galley IMG_1842	17
Galley - port IMG_3575	17
Galley - stbd IMG_3576	18
Head IMG_1849	18
Head IMG_3599	18
Interior bilge pump IMG_1845	18

Jib car puller access IMG_1856	19
Keel bolts IMG_1858	19
Mast step IMG_1853	19
Mast step IMG_1852	19
Junction box V-berth bulkhead IMG_1851	20
V-berth - empty IMG_3600	20
V-berth with cushions IMG_3579	20
V-berth - anchor & rode IMG_1850	20
CONTACTS	21
Contact details	21
Telephones	21
Office hours	21
Address	21

SPECIFICATIONS

Overview

RASCAL IS A LIGHTLY MODIFIED FARR 40 ONE-DESIGN WHICH WAS EXHAUSTIVELY REFIT IN 2018

Purchased in 2016 with a plan to completely rebuild the hull and deck

Competed in the 2019 Port Huron - Mac Race and a handful of club races

Out of the water 2020 through 2022 due to Covid constraints Shallow water in the lake near the club in 2023 has made it difficult to operate RASCAL and residual effects of Covid on crew bank have limited sailing to some club racing and day sailing

The rebuild has resulted in a very dry, stiff hull and deck, benefitting performance in all conditions

RASCAL offers a lot of potential as a serious line honours contender for a first-to-finish oriented buyer

Basic Information

Category: Racing Sailboat

Model Year: 1998

Year Built: 1998

Refit Type: FULL - HULL, DECK, INTERIOR, ENGINE

Country: Canada

Dimensions

LOA: 40' 9" (12.42mm)

LWL: 35' 3" (10.74mm)

Beam: 13.25

Min Draft: 8' 6" (2.59mm)

Max Draft: 8' 6" (2.59mm)

Speed, Capacities and Weight

Water Capacity: 42.2 Gallons

Fuel Capacity: 19.8 Gal Gallons

Hull and Deck Information

Hull Material: Composite Fiberglass

Deck Material: Composite Fiberglass

Hull Configuration: Fin & Bulb

Engine Information

Engines: 1

Manufacturer: Yanmar

Engine Type: Sail Drive

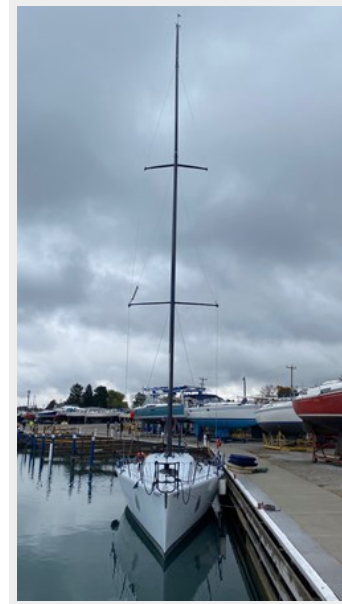
Fuel Type: Diesel

PHOTOS

At dock - from stern FE8FEF80AE



At dock - full rig height shot 04B3CA



At dock from port bow DD0F1E

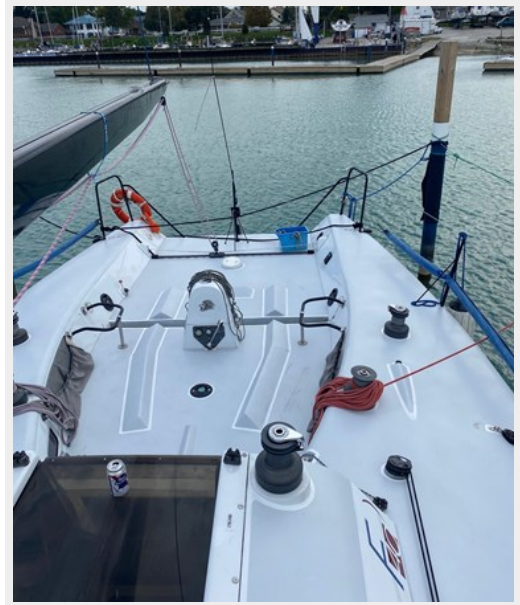
At dock - port bow DA4A137ED



At dock from port quarter C46C4



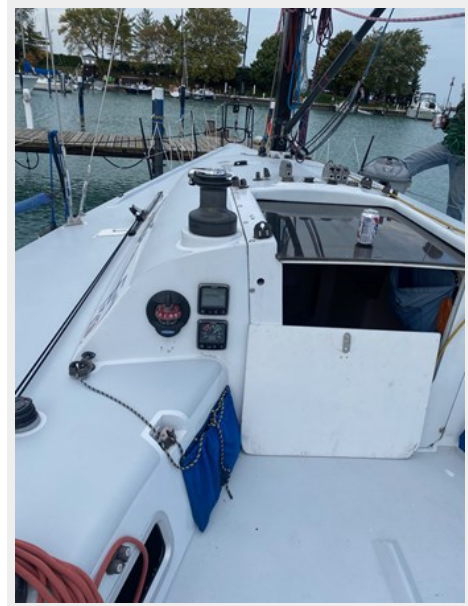
Cockpit from coachroof IMG_3565



Port deck from aft IMG_3564



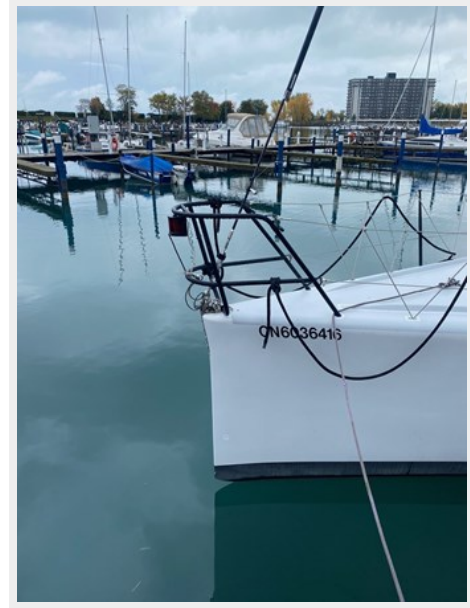
Port pit from cockpit IMG_3566



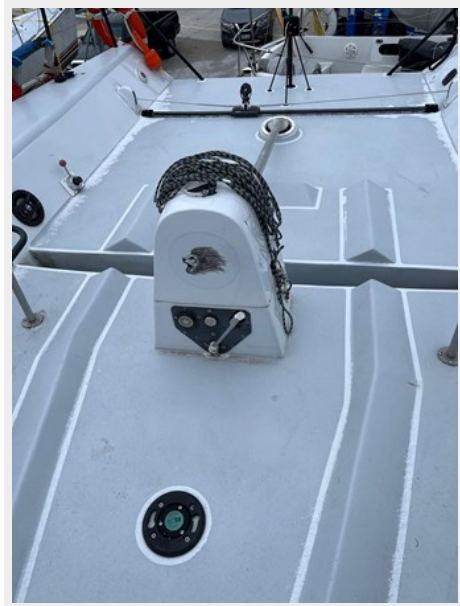
Stbd pit from cockpit IMG_3567



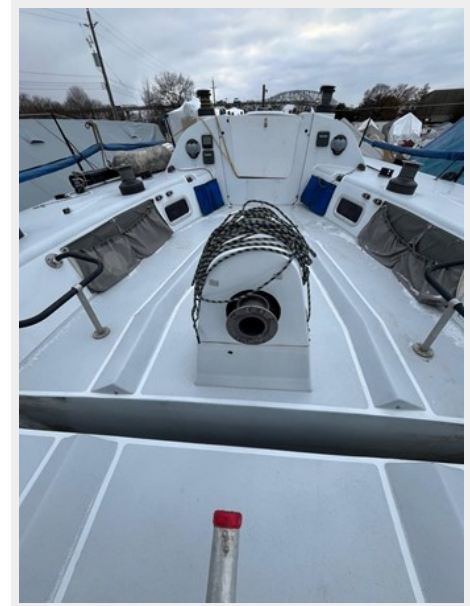
Stem profile AAEEA3AD



Custom helm pedestal IMG_1859



Hub for new steering wheel IMG_1862



Mast partner hardware IMG_1860



Stbd chainplate IMG_1864



Stbd near chainplate IMG_1863



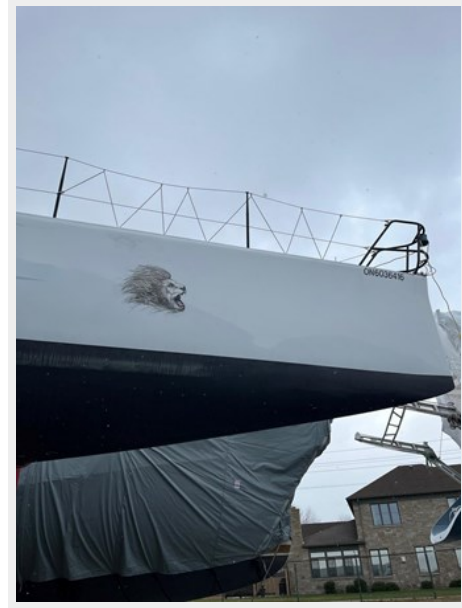
Wheel well in cockpit IMG_1861



From bow IMG_1840



Stbd forward hull IMG_1839



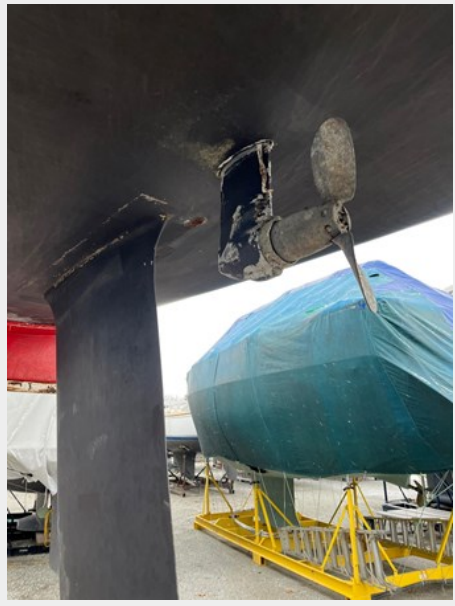
From stbd quarter IMG_1838



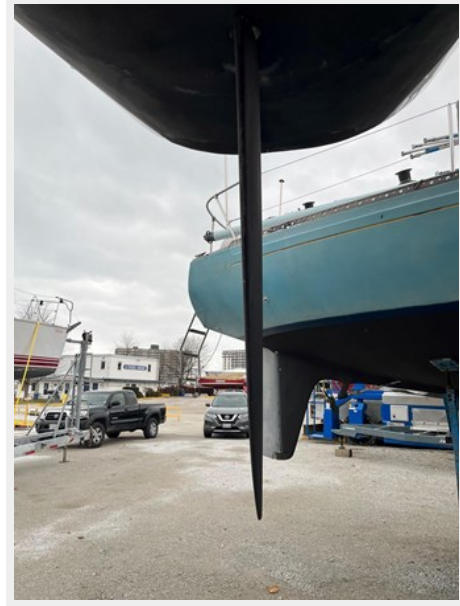
Fin & bulb IMG_1836



Sail drive & partial fin IMG_1835



Rudder IMG_1837



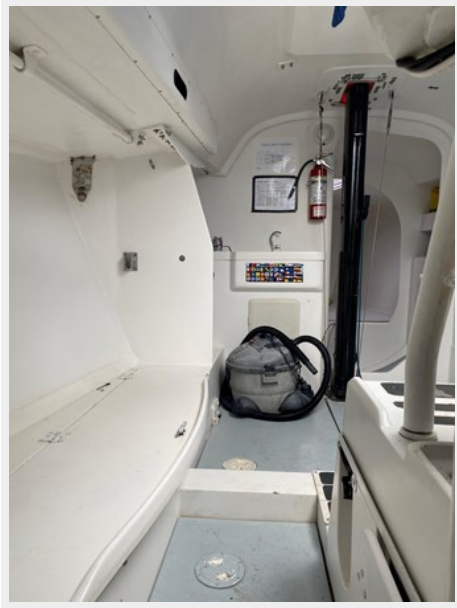
Cradle IMG_3581



Port bunks IMG_3591



Interior - port aft looking fwd IMG_3598



Bunks - port side IMG_3574



Port aft IMG_1844



Stbd aft IMG_1848



Stbd aft pipe berths IMG_3602



Stbd - pipe berths IMG_3578



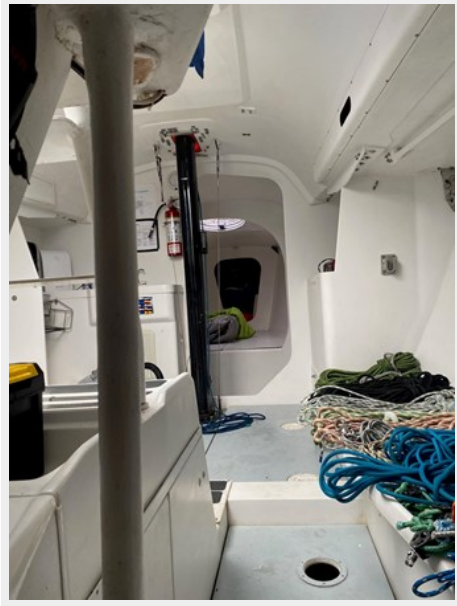
Spin pole by pipe berths IMG_3603



Running rigging CEC0D1



Interior - stbd aft looking fwd IMG_3597



Water bladder tank IMG_1843



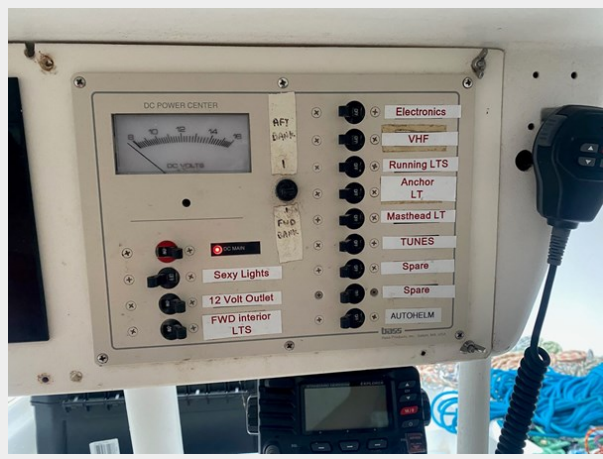
Nav station IMG_3594



Battery - under bunk stbd IMG_3577



Nav stn - 12V panel IMG_3595



Nav stn - engine gauges IMG_3601



Under cockpit - systems IMG_3592



Nav stn - stereo IMG_3596



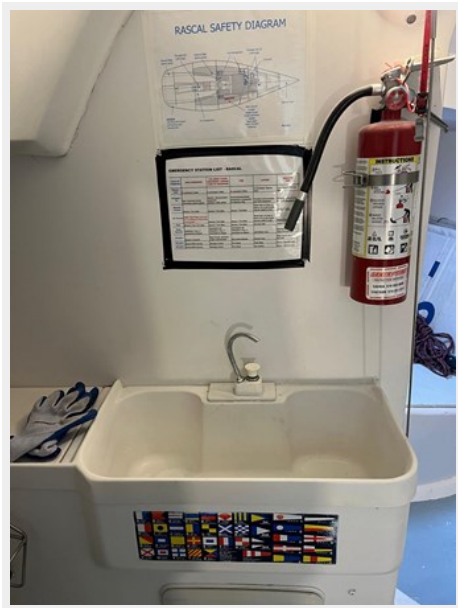
Steering cables sheaves IMG_1847



Fuel tank IMG_1846



Galley IMG_1842



Galley - port IMG_3575



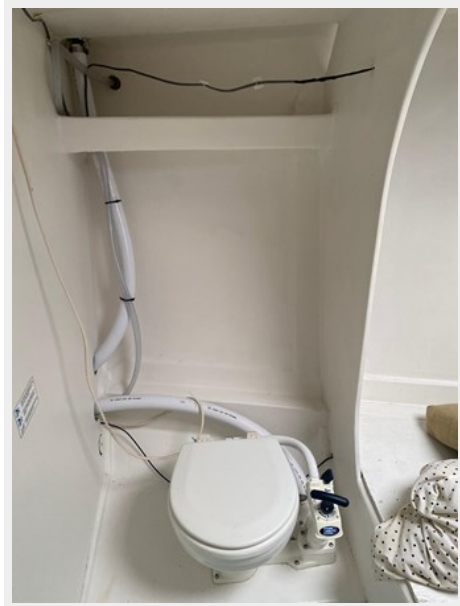
Galley - stbd IMG_3576



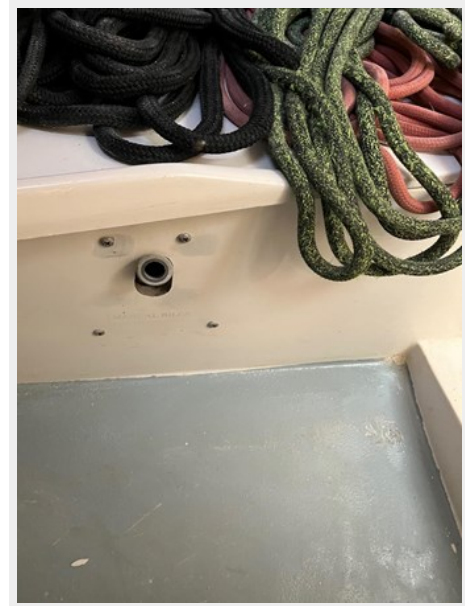
Head IMG_1849



Head IMG_3599



Interior bilge pump IMG_1845



Jib car puller access IMG_1856



Keel bolts IMG_1858



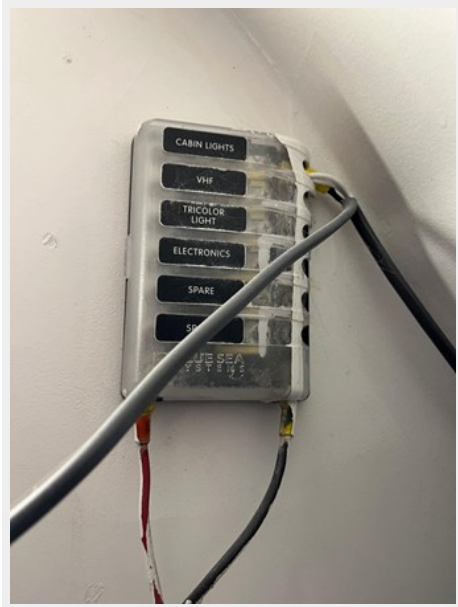
Mast step IMG_1853



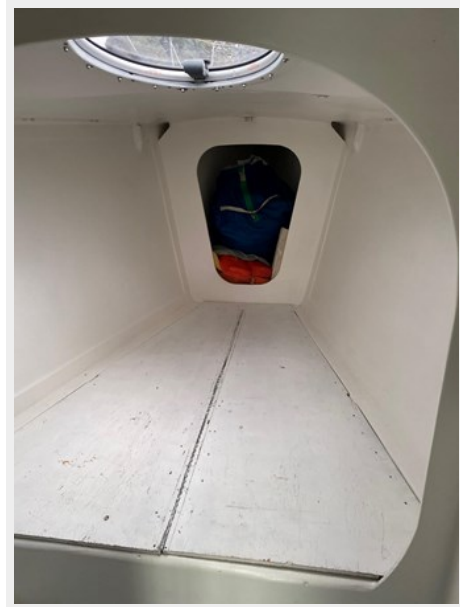
Mast step IMG_1852



Junction box V-berth bulkhead IMG_1851



V-berth - empty IMG_3600



V-berth with cushions IMG_3579



V-berth - anchor & rode IMG_1850



CONTACTS

Andrey Shestakov, leading yacht broker of the sales department of Shestakov Yacht Sales Inc. Shestakov Yacht Sales Inc., the official representative of the Miami/Fort Lauderdale FL headquarters.

Contact details

Email: andrey@shestakovyachtsales.com

Web: shestakovyachtsales.com/en/

Telephones

USA: +1(954)274-4435

Office hours

Monday – Saturday: **9:00 - 21:00** EDT

Sunday: **closed**

Address



Harbour Towne Marina, 850 NE 3rd St,
STE 213, Dania, FL 33004