

TRUE NORTH — BENETEAU



Builder: BENETEAU

Year Built: 2018

Model: Cruising Sailboat

Price: \$299,000 USD

Location: United States

LOA: 40' 9" (12.42mm)

Beam: 13.75

Max Draft: 5' 7" (1.7mm)

Cruise Speed: 7 Knots Kts. (8 MPH)

Max Speed: 9 Knots Kts. (10 MPH)

Our experienced yacht broker, Andrey Shestakov, will help you choose and buy a yacht that best suits your needs **TRUE NORTH — BENETEAU** from our catalogue. Presently, at Shestakov Yacht Sales Inc., we have a wide variety of yachts available on our sale's list. We also work in close contact with all the big yacht manufacturers from all over the world.

If you would like to buy a yacht **TRUE NORTH — BENETEAU** or would like help answering any questions concerning purchasing, selling or chartering a yacht, please call **+1(954)274-4435**

TABLE OF CONTENTS

TABLE OF CONTENTS	2
SPECIFICATIONS	5
Overview	5
Basic Information	5
Dimensions	5
Speed, Capacities and Weight	5
Accommodations	5
Hull and Deck Information	6
Engine Information	6
PHOTOS	7
Enclosure	7
Enclosure, Port Side	7
Dockside	7
Salon, Sistership	7
Galley	7
Salon, Fwd	7
Salon, Port	8
Primary Cabin Fwd	8
Head	8
Primary Fwd Cabin, Looking Aft, Sistership	8
Shower Stall	9
Guest Cabin Aft	9
Storage Area, Also Accessed from Deck	9
DC Panel	9
Aircon Unit	10
Aircon Pump	10
Windlass	10
Arch	10

Bow, Ashore	11
Stored Ashore	11
Bow, Looking Aft	11
Foredeck	11
Gooseneck	12
Vang	12
Port Helm	12
Stbd. Helm	12
Stbd Cockpit	13
Cockpit Table, GPS	13
Keel	13
Rudder	13
Folding Prop	14
Thruster	14
Engine	14
Engine	14
Water Pump	15
Filter and Strainer	15
At Anchor	15
At Anchor	15
Gennaker	16
Entertaining Cockpit	16
Gennaker	16
Mainsail	16
Sail Drive	17
Sailing	17
Top of Mast	17
CONTACTS	18
Contact details	18

Telephones	18
Office hours	18
Address	18

SPECIFICATIONS

Overview

TRUE NORTH is a like-new Oceanis 41.1 that has been in fresh water from new until August, 2023.

Basic Information

Category: Cruising Sailboat

Model Year: 2018

Year Built: 2018

Country: United States

Dimensions

LOA: 40' 9" (12.42mm)

Beam: 13.75

Max Draft: 5' 7" (1.7mm)

Speed, Capacities and Weight

Cruise Speed: 7 Knots Kts. (8 MPH)

Cruise Speed Range: 745

Max Speed: 9 Knots Kts. (10 MPH)

Max Speed Range: 500 Kts.

Gross Tonnage: 18 Pounds

Water Capacity: 87 Gallons

Holding Tank: 21 Gal Gallons

Fuel Capacity: 53 Gal Gallons

Accommodations

Total Cabins: 2

Total Berths: 4

Sleeps: 4

Total Heads: 1

Hull and Deck Information

Hull Material: Fiberglass

Deck Material: Teak

Hull Configuration: Monohull

Hull Designer: Finot-Conq

Interior Designer: Nauta Design

Engine Information

Engines: 1

Manufacturer: Yanmar

Engine Type: Inboard

Fuel Type: Diesel

PHOTOS

Enclosure



Enclosure, Port Side



Dockside



Salon, Sistership



Galley



Salon, Fwd



Salon, Port



Primary Cabin Fwd



Head



Primary Fwd Cabin, Looking Aft, Sistership



Sistership

Shower Stall



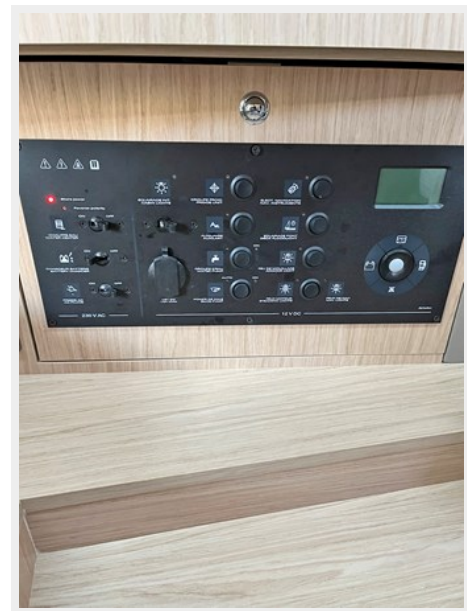
Guest Cabin Aft



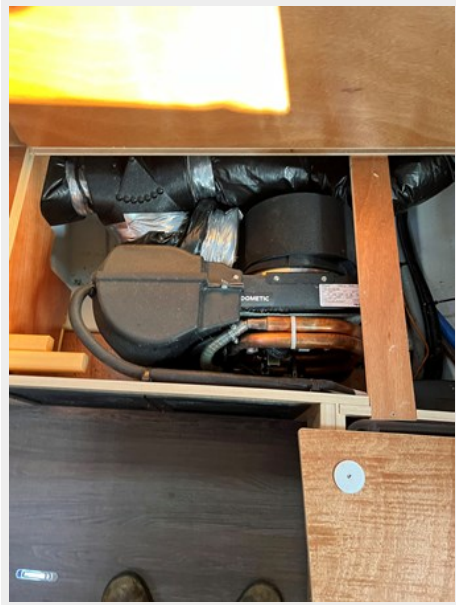
Storage Area, Also Accessed from Deck



DC Panel



Aircon Unit



Aircon Pump



Windlass



Arch



Stored Ashore



Bow, Ashore



Bow, Looking Aft



Foredeck



Gooseneck



Vang



Port Helm



Stbd. Helm



Stbd Cockpit



Cockpit Table, GPS



Keel



Rudder



Folding Prop



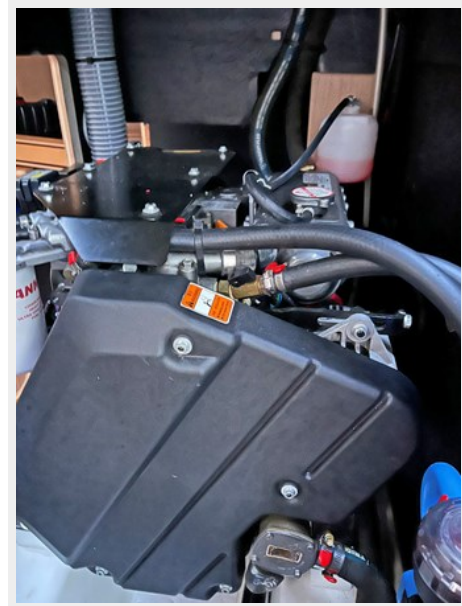
Thruster



Engine



Engine



Water Pump



Filter and Strainer



At Anchor



At Anchor



Entertaining Cockpit



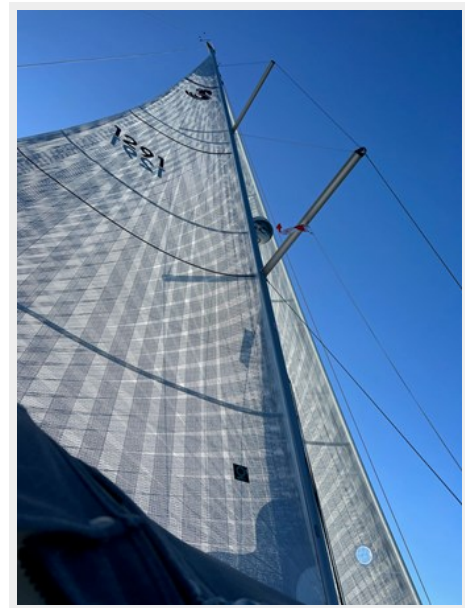
Gennaker



Gennaker



Mainsail



Sail Drive



Sailing



Top of Mast



CONTACTS

Andrey Shestakov, leading yacht broker of the sales department of Shestakov Yacht Sales Inc. Shestakov Yacht Sales Inc., the official representative of the Miami/Fort Lauderdale FL headquarters.

Contact details

Email: andrey@shestakovyachtsales.com

Web: shestakovyachtsales.com/en/

Telephones

USA: +1(954)274-4435

Office hours

Monday – Saturday: **9:00 - 21:00** EDT

Sunday: **closed**

Address



Harbour Towne Marina, 850 NE 3rd St,
STE 213, Dania, FL 33004