

## **GISELLA DEL MAR — BOSTON WHALER**



**Builder:** BOSTON WHALER

**Year Built:** 2019

**Model:** center\_console

**Price:** \$469,000 USD

**Location:** United States

**LOA:** 35' 6" (10.82mm)

**Beam:** 10.83

**Min Draft:** 2' 1" (0.63mm)

Our experienced yacht broker, Andrey Shestakov, will help you choose and buy a yacht that best suits your needs **GISELLA DEL MAR — BOSTON WHALER** from our catalogue. Presently, at Shestakov Yacht Sales Inc., we have a wide variety of yachts available on our sale's list. We also work in close contact with all the big yacht manufacturers from all over the world.

If you would like to buy a yacht **GISELLA DEL MAR — BOSTON WHALER** or would like help answering any questions concerning purchasing, selling or chartering a yacht, please call **+1(954)274-4435**

# TABLE OF CONTENTS

---

TABLE OF CONTENTS	2
SPECIFICATIONS	5
Basic Information	5
Dimensions	5
Speed, Capacities and Weight	5
Accommodations	5
Hull and Deck Information	5
Engine Information	6
PHOTOS	7
Port profile	7
Stbd quarter profile	7
Port quarter profile	7
Stern profile	7
Aerial view	7
Cockpit	7
Bow area	8
Helm	8
Port profile 2	8
Captain's chair and helm deck second row seat	8
Cockpit with table installed	8
Cockpit view 2	8
Cockpit view 3	9
Cockpit view 4	9
Cockpit sunshade	9
Foldout stern bench seat	9
Wet bar	9
Stbd bow profile	9
Helm area	10

Helm area view 2	10
Electronics at the helm	10
Joystick control	10
Captain's chair	10
Helm deck table	10
Built-in cooler/storage under second row seating	11
Built-in cooler/storage under second row seating view 2	11
Stbd profile 2	11
Bow seating area	11
Bow seating with filler cushion	11
Bow area looking aft	11
Bow table	12
Port profile 3	12
Cabin	12
Cabin view 2	12
Head	12
Shower	12
Sink	13
Port quarter profile 2	13
Triple engines	13
Triple engines view 2	13
Engine compartment	13
Engine compartment view 2	13
Engine compartment view 3	14
Engine compartment view 4	14
Genset	14
Batteries	14
Stbd profile 3	14
Cockpit grill	14

---

Raw water washdown	15
Stbd profile 4	15
Shower power	15
Speakers	15
Port profile 4	15
Raymarine units	15
ACR remote control	16
Stbd profile 5	16
Raymarine radar	16
Mercury DTS and joystick control	16
350 Realm underway	16
350 Realm underway 2	16
350 Realm underway 3	17
350 Realm underway 4	17
<b>CONTACTS</b>	<b>18</b>
Contact details	18
Telephones	18
Office hours	18
Address	18

---

# SPECIFICATIONS

---

## Basic Information

---

**Category:** center\_console

**Sub Category:** Center Console

**Model Year:** 2019

**Year Built:** 2019

**Country:** United States

## Dimensions

---

**LOA:** 35' 6" (10.82mm)

**Beam:** 10.83

**Min Draft:** 2' 1" (0.63mm)

## Speed, Capacities and Weight

---

**Water Capacity:** 45 Gallons

**Holding Tank:** 10 Gal Gallons

**Fuel Capacity:** 385 Gal Gallons

## Accommodations

---

**Total Berths:** 1

**Sleeps:** 2

**Total Heads:** 1

## Hull and Deck Information

---

**Hull Material:** Fiberglass

**Hull Configuration:** Deep Vee

**Hull Color:** Ice Blue

---

## Engine Information

---

**Engines:** 3

**Manufacturer:** Mercury

**Engine Type:** Outboard

**Fuel Type:** Gas/Petrol

# PHOTOS

**Port profile**



**Stbd quarter profile**



**Port quarter profile**



**Stern profile**



**Aerial view**



**Cockpit**





**Bow area**



**Helm**



**Captain's chair and helm deck second row seat**



**Port profile 2**



**Cockpit with table installed**



**Cockpit view 2**





**Cockpit view 3**



**Cockpit view 4**



**Cockpit sunshade**



**Foldout stern bench seat**



**Wet bar**



**Stbd bow profile**



**Helm area**



**Helm area view 2**



**Electronics at the helm**



**Joystick control**



**Captain's chair**



**Helm deck table**





**Built-in cooler/storage under second row seating**



**Built-in cooler/storage under second row seating view 2**



**Stbd profile 2**



**Bow seating area**



**Bow seating with filler cushion**



**Bow area looking aft**



**Bow table**



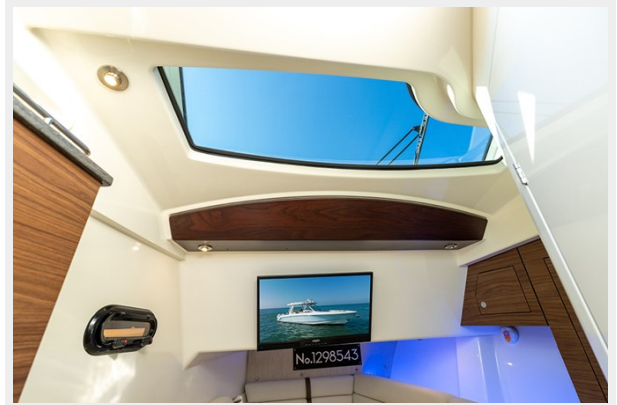
**Port profile 3**



**Cabin**



**Cabin view 2**



**Head**

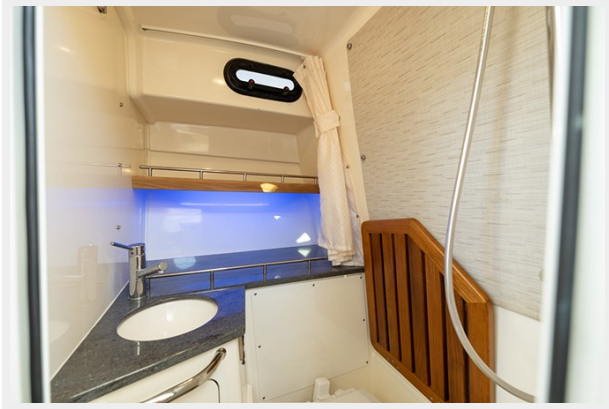


**Shower**





**Sink**



**Port quarter profile 2**



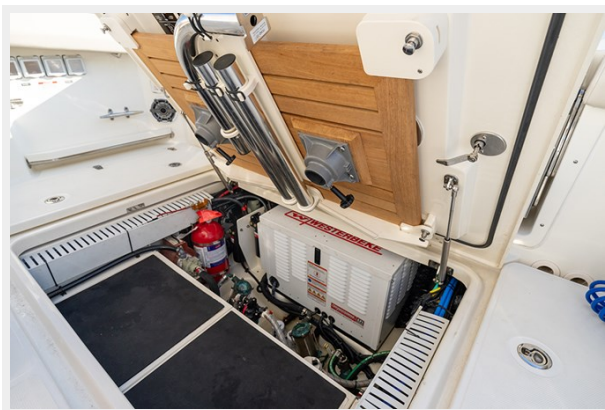
**Triple engines**



**Triple engines view 2**



**Engine compartment**



**Engine compartment view 2**



**Engine compartment view 3**



**Engine compartment view 4**



**Genset**



**Batteries**



**Stbd profile 3**



**Cockpit grill**





**Raw water washdown**



**Stbd profile 4**



**Shower power**



**Speakers**



**Port profile 4**



**Raymarine units**



**ACR remote control**



**Stbd profile 5**



**Raymarine radar**



**Mercury DTS and joystick control**



**350 Realm underway**



**350 Realm underway 2**



**350 Realm underway 3**



**350 Realm underway 4**





---

# CONTACTS

---

Andrey Shestakov, leading yacht broker of the sales department of Shestakov Yacht Sales Inc. Shestakov Yacht Sales Inc., the official representative of the Miami/Fort Lauderdale FL headquarters.

---

## Contact details

---

Email: [andrey@shestakovyachtsales.com](mailto:andrey@shestakovyachtsales.com)

Web: [shestakovyachtsales.com/en/](http://shestakovyachtsales.com/en/)

---

## Telephones

---

USA: +1(954)274-4435

---

## Office hours

---

Monday – Saturday: **9:00 - 21:00** EDT

Sunday: **closed**

---

## Address

---



Harbour Towne Marina, 850 NE 3rd St,  
STE 213, Dania, FL 33004