

J BOATS — J BOATS



Builder: J BOATS

LOA: 28' (8.53mm)

Year Built: 1986

Model: Cruising or Racing Sailboat

Price: \$30,000 USD

Location: United States

Our experienced yacht broker, Andrey Shestakov, will help you choose and buy a yacht that best suits your needs **J Boats — J BOATS** from our catalogue. Presently, at Shestakov Yacht Sales Inc., we have a wide variety of yachts available on our sale's list. We also work in close contact with all the big yacht manufacturers from all over the world.

If you would like to buy a yacht **J Boats — J BOATS** or would like help answering any questions concerning purchasing, selling or chartering a yacht, please call **+1(954)274-4435**

TABLE OF CONTENTS

TABLE OF CONTENTS	2
SPECIFICATIONS	3
Overview	3
Basic Information	3
Dimensions	3
Speed, Capacities and Weight	3
Accommodations	4
Hull and Deck Information	4
Engine Information	4
PHOTOS	5
J Boats - Foredeck	5
J Boats - Looking Forward	5
J Boats - Looking Aft	5
J Boats - Galley	5
J Boats - Galley Extention	5
J Boats - Saloon	5
J Boats - Saloon Table	6
J Boats - Forward Cabin	6
J Boats - Head	6
J Boats - Helm	6
J Boats - Cockpit	6
CONTACTS	7
Contact details	7
Telephones	7
Office hours	7
Address	7

SPECIFICATIONS

Overview

J Boats 28Clean Air Electric Propulsion

For Sale by Waterline Boats Port Townsend

Benefit from an immersive experience, featuring 5 Virtual Tours, 2 Videos, and 110 photos, along with comprehensive specs and expert broker's commentary. All of this is available for the J boats 28 - Contact our Waterline Boats Broker!

Boat REF# · 327075Length · 28'0"Year · 1986Construction · GRPUnderwater profile · FinSleeping berths · 4Engine · 1 x Electric 20hp, Elco EP20 (2023)Lying · Port Townsend, WA USA -- Shown by Appt!Broker's Comments:The manufacturer (J-Boats) describes this vessel as a "Stable and fast pocket cruiser that's easy to handle and comfortable for two."J-boats have a reputation for being well-built with well-laid out sail and deck plans. This J-28 is configured with a cockpit capable of seating 7 (4 on the cushions, 3 aft of the helm).This vessel recently went through a yard period and refit and the diesel inboard was replaced with an ELCO EP-20 electric inboard motor with a 48V lithium battery bank. Transiting under power or sail is now quiet, smooth, and fumeless. The bottom was painted and propellor replaced at the last yard period.This J28 would be well-suited for day sailing and weekend cruising.

Basic Information

Category: Cruising or Racing Sailboat

Model Year: 1986

Year Built: 1986

Country: United States

Dimensions

LOA: 28' (8.53mm)

Speed, Capacities and Weight

Water Capacity: 35 Gallons

Holding Tank: 15 Gal Gallons

Accommodations

Total Cabins: 1

Hull and Deck Information

Hull Material: Fiberglass

Deck Material: Fiberglass

Hull Configuration: Deep Fin

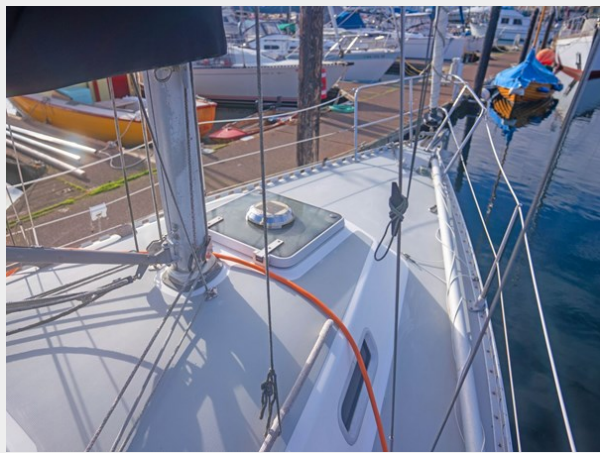
Engine Information

Engines: 1

Fuel Type: Electric

PHOTOS

J Boats - Foredeck



J Boats - Looking Forward



J Boats - Looking Aft



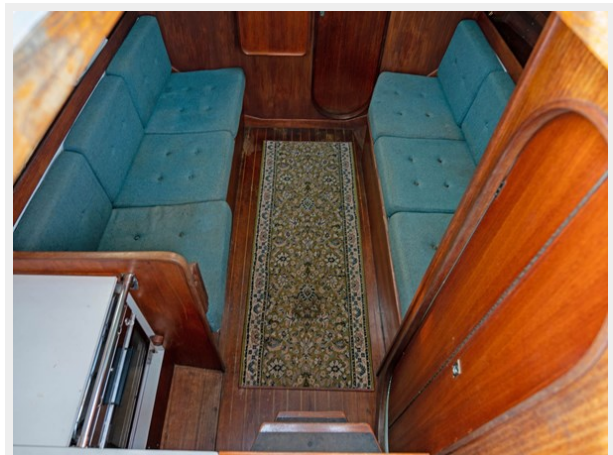
J Boats - Galley



J Boats - Galley Extension



J Boats - Saloon



J Boats - Saloon Table



J Boats - Forward Cabin



J Boats - Head



J Boats - Helm



J Boats - Cockpit



CONTACTS

Andrey Shestakov, leading yacht broker of the sales department of Shestakov Yacht Sales Inc. Shestakov Yacht Sales Inc., the official representative of the Miami/Fort Lauderdale FL headquarters.

Contact details

Email: **andrey@shestakovyachtsales.com**

Web: shestakovyachtsales.com/en/

Telephones

USA: **+1(954)274-4435**

Office hours

Monday – Saturday: **9:00 - 21:00 EDT**

Sunday: **closed**

Address



Harbour Towne Marina, 850 NE 3rd St,
STE 213, Dania, FL 33004