

## 2018 SHAEFER 400 — SCHAEFER YACHTS



**Builder:** SCHAEFER YACHTS

**Year Built:** 2018

**Model:** cruiser

**Price:** \$585,000 USD

**Location:** United States

**LOA:** 40' 2" (12.24mm)

**Beam:** 12.66

**Min Draft:** 3' (0.91mm)

**Max Draft:** 3' 7" (1.09mm)

**Cruise Speed:** 22 Knots Kts. (25 MPH)

**Max Speed:** 30 Knots Kts. (35 MPH)

Our experienced yacht broker, Andrey Shestakov, will help you choose and buy a yacht that best suits your needs 2018 Shaefer 400 — SCHAEFER YACHTS from our catalogue. Presently, at Shestakov Yacht Sales Inc., we have a wide variety of yachts available on our sale's list. We also work in close contact with all the big yacht manufacturers from all over the world.

If you would like to buy a yacht 2018 Shaefer 400 — SCHAEFER YACHTS or would like help answering any questions concerning purchasing, selling or chartering a yacht, please call **+1(954)274-4435**

# TABLE OF CONTENTS

TABLE OF CONTENTS	2
SPECIFICATIONS	4
Basic Information	4
Dimensions	4
Speed, Capacities and Weight	4
Accommodations	4
Hull and Deck Information	5
Engine Information	5
PHOTOS	6
DMF_9143	6
DMF_9122	6
DMF_9066	6
DMF_8877	6
DMF_8870	6
DMF_8758	6
DMF_8772	7
DMF_9024	7
DMF_9010	7
DMF_8793	7
DMF_8702	7
DMF_8667	7
DMF_8730	8
DMF_8723	8
DMF_8562	8
DMF_8639	8
DMF_8527	8
DMF_8625	8
DMF_8513	9

---

DMF_8583	9
DMF_8401	9
DMF_8485	9
DMF_8450	10
DMF_8464	10
DMF_8422	10
DMF_8366	10
DMF_8359	10
DMF_8352	10
DMF_8359	11
DMF_8352	11
DMF_8359	11
DMF_8345	11
DMF_8339	11
DMF_8331	11
CONTACTS	12
Contact details	12
Telephones	12
Office hours	12
Address	12

---

---

# SPECIFICATIONS

---

## Basic Information

---

**Category:** cruiser

**Sub Category:** Cabin Cruiser

**Model Year:** 2018

**Year Built:** 2018

**Country:** United States

## Dimensions

---

**LOA:** 40' 2" (12.24mm)

**Beam:** 12.66

**Min Draft:** 3' (0.91mm)

**Max Draft:** 3' 7" (1.09mm)

## Speed, Capacities and Weight

---

**Cruise Speed:** 22 Knots Kts. (25 MPH)

**Cruise Speed Range:** 260

**Max Speed:** 30 Knots Kts. (35 MPH)

**Max Speed Range:** 190 Kts.

**Gross Tonnage:** 14 Pounds

**Water Capacity:** 66 Gallons

**Holding Tank:** 30 Gal Gallons

**Fuel Capacity:** 210 Gal Gallons

## Accommodations

---

**Total Cabins:** 2

**Total Berths:** 2

**Sleeps:** 4

**Total Heads:** 2

---

## Hull and Deck Information

---

**Hull Material:** Fiberglass

**Deck Material:** Fiberglass

**Hull Configuration:** Modified V-Hull

**Hull Designer:** SCHAEFER YACHTS

**Interior Designer:** SCHAEFER YACHTS

---

## Engine Information

---

**Engines:** 2

**Manufacturer:** Volvo Penta

**Fuel Type:** Diesel

# PHOTOS

**DMF\_9143**



**DMF\_9122**



**DMF\_9066**



**DMF\_8877**



**DMF\_8870**



**DMF\_8758**



**DMF\_8772**



**DMF\_9024**



**DMF\_9010**



**DMF\_8793**



**DMF\_8702**



**DMF\_8667**



**DMF\_8730**



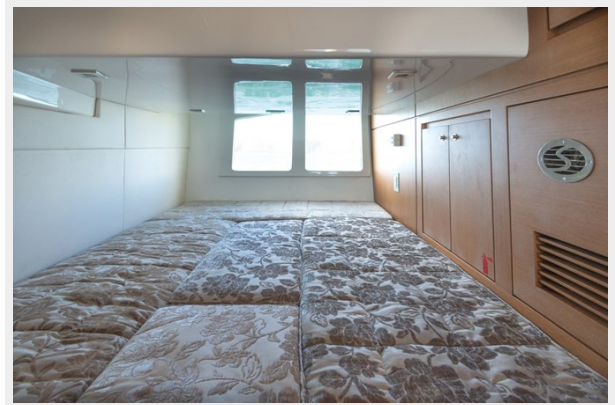
**DMF\_8723**



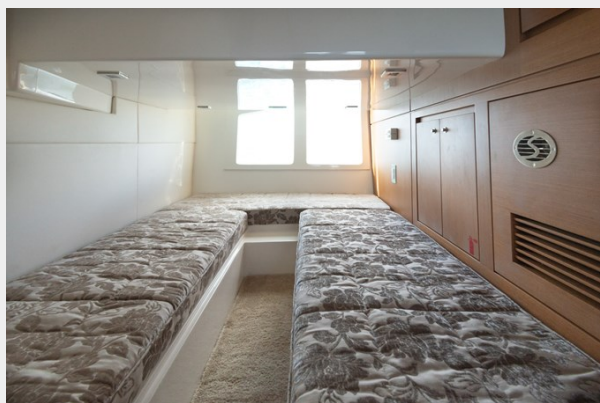
**DMF\_8562**



**DMF\_8639**



**DMF\_8625**



**DMF\_8527**





**DMF\_8583**



**DMF\_8513**



**DMF\_8401**



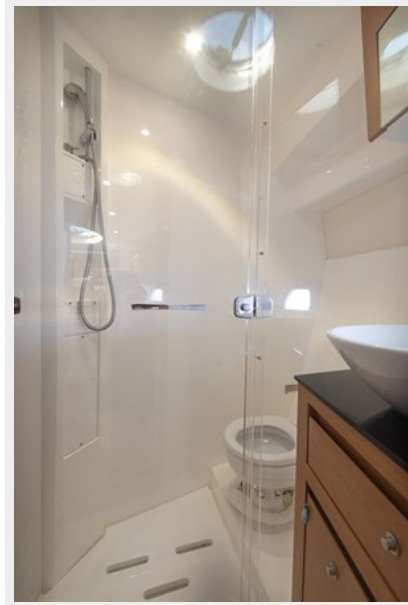
**DMF\_8485**



**DMF\_8450**



**DMF\_8464**



**DMF\_8422**



**DMF\_8366**



**DMF\_8359**



**DMF\_8352**



DMF\_8359



DMF\_8352



DMF\_8359



DMF\_8345



DMF\_8339



DMF\_8331



# CONTACTS

---

Andrey Shestakov, leading yacht broker of the sales department of Shestakov Yacht Sales Inc. Shestakov Yacht Sales Inc., the official representative of the Miami/Fort Lauderdale FL headquarters.

## Contact details

---

Email: [andrey@shestakovyachtsales.com](mailto:andrey@shestakovyachtsales.com)

Web: [shestakovyachtsales.com/en/](http://shestakovyachtsales.com/en/)

## Telephones

---

USA: +1(954)274-4435

## Office hours

---

Monday – Saturday: **9:00 - 21:00** EDT

Sunday: **closed**

## Address

---



Harbour Towne Marina, 850 NE 3rd St,  
STE 213, Dania, FL 33004