

# JACK TAR 26 FAST TRAWLER DOWNEAST — CUSTOM



**Builder:** CUSTOM

**LOA:** 26' (7.92mm)

**Year Built:** 2000

**Model:** trawler

**Price:** PRICE ON APPLICATION

**Location:** United States

Our experienced yacht broker, Andrey Shestakov, will help you choose and buy a yacht that best suits your needs Jack Tar 26 Fast Trawler Downeast Lobster Boat — CUSTOM from our catalogue. Presently, at Shestakov Yacht Sales Inc., we have a wide variety of yachts available on our sale's list. We also work in close contact with all the big yacht manufacturers from all over the world.

If you would like to buy a yacht Jack Tar 26 Fast Trawler Downeast Lobster Boat — CUSTOM or would like help answering any questions concerning purchasing, selling or chartering a yacht, please call +1(954)274-4435

# TABLE OF CONTENTS

TABLE OF CONTENTS	2
SPECIFICATIONS	4
Overview	4
Basic Information	4
Dimensions	4
Speed, Capacities and Weight	5
Accommodations	5
Hull and Deck Information	5
Engine Information	5
PHOTOS	6
Jack Tar 26 Fast Trawler Downeast Lobster Boat - Exterior	6
Jack Tar 26 Fast Trawler Downeast Lobster Boat - Exterior	6
Jack Tar 26 Fast Trawler Downeast Lobster Boat - Looking Forward	6
Jack Tar 26 Fast Trawler Downeast Lobster Boat - Looking Aft	6
Jack Tar 26 Fast Trawler Downeast Lobster Boat - Galley	7
Jack Tar 26 Fast Trawler Downeast Lobster Boat - Salon	7
Jack Tar 26 Fast Trawler Downeast Lobster Boat - Salon Table	7
Jack Tar 26 Fast Trawler Downeast Lobster Boat - Forward Cabin	7
Jack Tar 26 Fast Trawler Downeast Lobster Boat - Head	7
Jack Tar 26 Fast Trawler Downeast Lobster Boat - Helm	7
Jack Tar 26 Fast Trawler Downeast Lobster Boat - Helm Companion Seating	8
Jack Tar 26 Fast Trawler Downeast Lobster Boat - Cockpit	8
Jack Tar 26 Fast Trawler Downeast Lobster Boat - Cockpit Docking Station	8
Jack Tar 26 Fast Trawler Downeast Lobster Boat - Cockpit	8
CONTACTS	9
Contact details	9
Telephones	9
Office hours	9

---

Address

9

---

# SPECIFICATIONS

---

## Overview

---

Jack Tar 26 Fast Trawler Extended Cabin Downeast Lobster Boat - REDUCED! Well Equipped and Updated

For Sale by Waterline Boats Port Townsend

Boat REF# · 330241 Length · 26'0" Year · 2000 Construction · GRP Underwater profile · Semi-Displacement Sleeping berths · 3 Engine · 1 x diesel 230hp, Yanmar 4LH-STE, 4 cylinder in-line, turbocharged (2000)

Broker's Comments: This pocket-sized fast trawler has a track record of serious cruising, yet is compact enough to still be trailerable. Custom built in 2000, this trawler has cruised both coasts and the mid-west. The hull design and the 230 hp Yanmar 4LHA-STE with ~1300 hours allow for cruising at 10-12 knots and a top speed of 20 knots. A bow thruster simplifies docking. This fast trawler displays a Downeast appearance and the dry stack exhaust adds character. The interior is rich in natural wood and is classically nautical. Cabinet and drawer faces, beams, shelves, and trim are all fashioned out of custom milled mahogany and the interior decks are teak and holly. I'm told an entire truck load of mahogany went into building this boat, and that may not be a stretch. Two steering stations, including one in the cockpit, simplify docking, and would allow this trolling valve equipped fast trawler to be an effective recreational fishing vessel. She would be equally well suited for gunkholing the PNW or cruising the Great Loop. The current owner has made numerous updates over the past eight years including a renovation of much of the interior, a complete update to exterior topside and bottom paint, the addition of a Wallas DT diesel stove/heater, 200 watts of solar, a large roof rack for carrying gear / tender / kayaks, updates to the electronics, and more.

---

## Basic Information

---

**Category:** trawler

**Sub Category:** Sedan

**Model Year:** 2000

**Year Built:** 2000

**Country:** United States

---

## Dimensions

---

**LOA:** 26' (7.92mm)

---

## Speed, Capacities and Weight

---

**Water Capacity:** 15 Gallons

**Holding Tank:** 15 Gal Gallons

**Fuel Capacity:** 70 Gal Gallons

---

## Accommodations

---

**Total Cabins:** 1

---

## Hull and Deck Information

---

**Hull Material:** Fiberglass

**Deck Material:** Fiberglass

**Hull Configuration:** Semi-Displacement

---

## Engine Information

---

**Engines:** 1

**Manufacturer:** Yanmar

**Engine Type:** Inboard

**Fuel Type:** Diesel

# PHOTOS

**Jack Tar 26 Fast Trawler Downeast Lobster Boat - Exterior**



**Jack Tar 26 Fast Trawler Downeast Lobster Boat - Exterior**



**Jack Tar 26 Fast Trawler Downeast Lobster Boat - Looking Forward**



**Jack Tar 26 Fast Trawler Downeast Lobster Boat - Looking Aft**





**Jack Tar 26 Fast Trawler Downeast Lobster Boat - Galley**



**Jack Tar 26 Fast Trawler Downeast Lobster Boat - Salon**



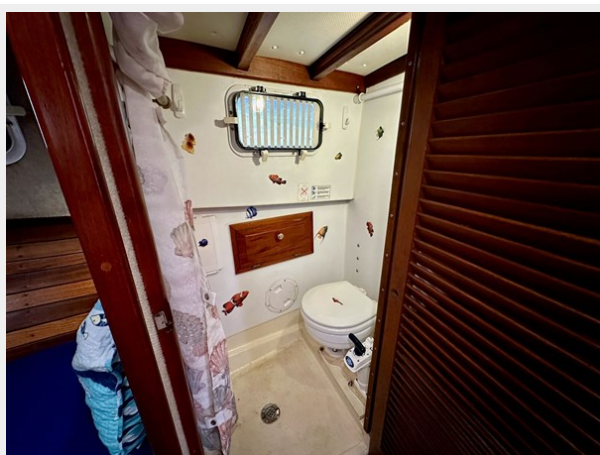
**Jack Tar 26 Fast Trawler Downeast Lobster Boat - Salon Table**



**Jack Tar 26 Fast Trawler Downeast Lobster Boat - Forward Cabin**



**Jack Tar 26 Fast Trawler Downeast Lobster Boat - Head**



**Jack Tar 26 Fast Trawler Downeast Lobster Boat - Helm**





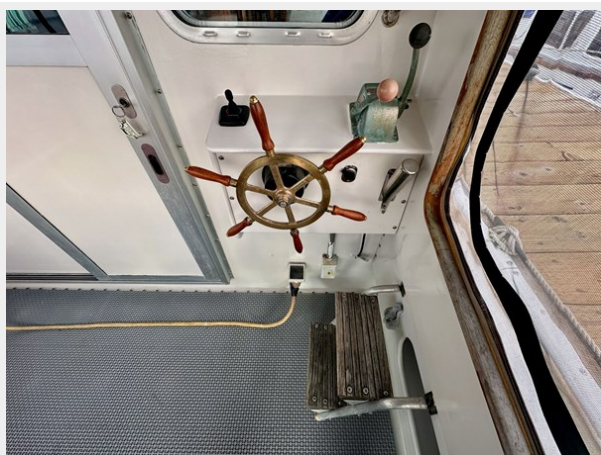
**Jack Tar 26 Fast Trawler Downeast Lobster Boat - Helm Companion Seating**



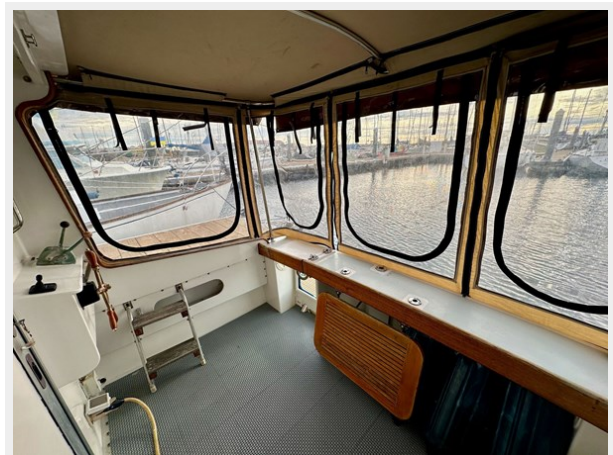
**Jack Tar 26 Fast Trawler Downeast Lobster Boat - Cockpit**



**Jack Tar 26 Fast Trawler Downeast Lobster Boat - Cockpit Docking Station**



**Jack Tar 26 Fast Trawler Downeast Lobster Boat - Cockpit**





# CONTACTS

---

Andrey Shestakov, leading yacht broker of the sales department of Shestakov Yacht Sales Inc. Shestakov Yacht Sales Inc., the official representative of the Miami/Fort Lauderdale FL headquarters.

## Contact details

---

Email: [andrey@shestakovyachtsales.com](mailto:andrey@shestakovyachtsales.com)

Web: [shestakovyachtsales.com/en/](http://shestakovyachtsales.com/en/)

## Telephones

---

USA: +1(954)274-4435

## Office hours

---

Monday – Saturday: **9:00 - 21:00** EDT

Sunday: **closed**

## Address

---



Harbour Towne Marina, 850 NE 3rd St,  
STE 213, Dania, FL 33004