

2024 ELAN IMPRESSION 43 — ELAN



Builder: ELAN

Year Built: 2024

Model: Cruising Sailboat

Price: \$699,372 USD

Location: United States

LOA: 44' 7" (13.59mm)

Beam: 13.91

Min Draft: 5' 7" (1.7mm)

Our experienced yacht broker, Andrey Shestakov, will help you choose and buy a yacht that best suits your needs 2024 Elan Impression 43 — ELAN from our catalogue. Presently, at Shestakov Yacht Sales Inc., we have a wide variety of yachts available on our sale's list. We also work in close contact with all the big yacht manufacturers from all over the world.

If you would like to buy a yacht 2024 Elan Impression 43 — ELAN or would like help answering any questions concerning purchasing, selling or chartering a yacht, please call +1(954)274-4435

TABLE OF CONTENTS

TABLE OF CONTENTS	2
SPECIFICATIONS	3
Overview	3
Basic Information	3
Dimensions	3
Speed, Capacities and Weight	4
Accommodations	4
Hull and Deck Information	4
Engine Information	4
PHOTOS	5
CONTACTS	11
Contact details	11
Telephones	11
Office hours	11
Address	11

SPECIFICATIONS

Overview

IN-STOCK AND READY TO GO SAILING. FULLY LOADED WITH EVERY OPTION INCLUDING GENERATOR (10KW), A/C, DIESEL HEATING, 4 POWER WINCHES, BOW-THRUSTER, PERMATEEK DECKS, FULL GARMIN ELECTRONICS, CUSTOM CANVAS, AND MORE!! Boasting a modern wide-beam hull, the Impression 43 offers much more space than previous models. Due to the continuing tradition of a raised coach roof, what we call a “semi-deck-saloon”, it holds its own against competitors as well. It will surprise no one that the hull and sail plan was designed by Humphreys Yacht Design. Be rest assured that the yacht will therefore have great sailing characteristics even at fully-loaded larger displacement yachts. The yachts aesthetics were styled in cooperation with the design studio Pininfarina a relationship that birthed the multiple design award-winning Elan E6 and is now continuing with the Elan Impression 43. The hull and sail plan are optimized for easy short-handed sailing. Elan’s recognizable 3D VAIL composite technology creates a light, stiff and incredibly safe construction style. VAIL, or vacuum-assisted infusion lamination process creates a solid hull without imperfections or air bubbles, which, in combination with the vinyl ester outer layer makes the yacht osmosis-proof. The “3D” part of vacuum-assisted infusion lamination is applied to the vertical and lateral stringers, which ensures the best mechanical properties of the hull and rigging and is the secret behind Elan’s famed hull stiffness.

Basic Information

Category: Cruising Sailboat

Model Year: 2024

Year Built: 2024

Country: United States

Dimensions

LOA: 44' 7" (13.59mm)

LWL: 40' (12.19mm)

LOD: 42' (12.8mm)

Beam: 13.91

Min Draft: 5' 7" (1.7mm)

Speed, Capacities and Weight

Water Capacity: 124 Gallons

Holding Tank: 30 Gal Gallons

Fuel Capacity: 75 Gal Gallons

Accommodations

Total Cabins: 3

Total Berths: 3

Total Heads: 2

Hull and Deck Information

Hull Material: Fiberglass

Engine Information

Engines: 1

Manufacturer: Yanmar

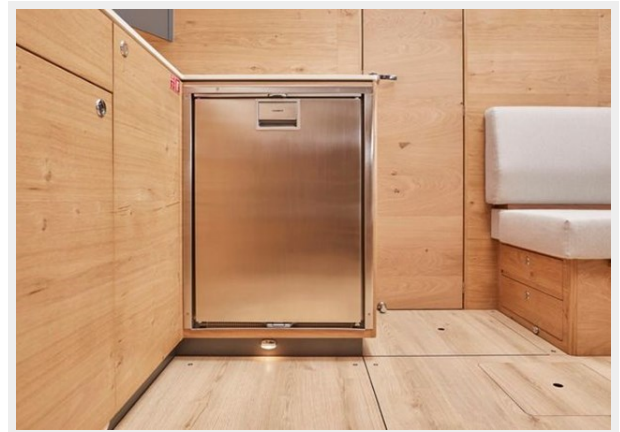
Engine Type: Sail Drive

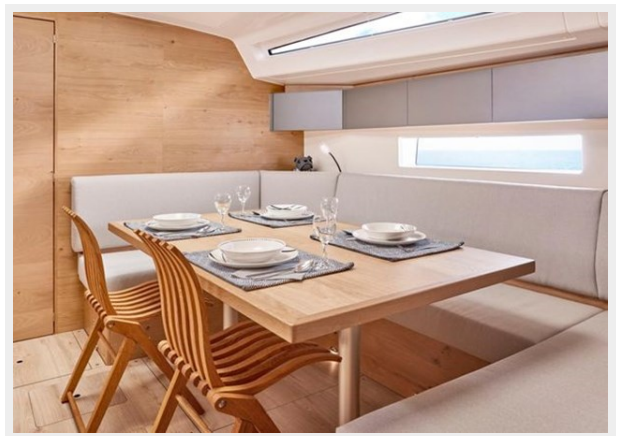
Fuel Type: Diesel

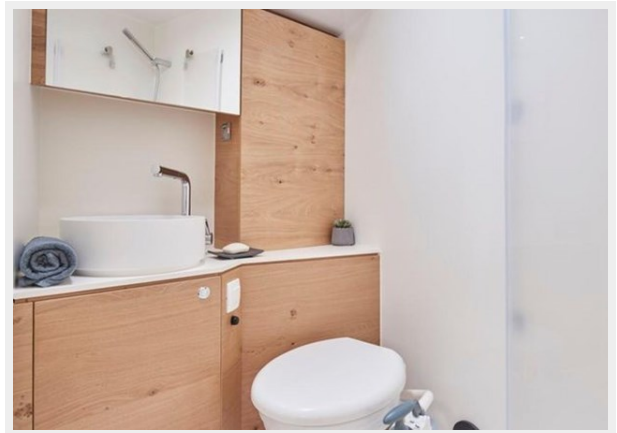
PHOTOS













CONTACTS

Andrey Shestakov, leading yacht broker of the sales department of Shestakov Yacht Sales Inc. Shestakov Yacht Sales Inc., the official representative of the Miami/Fort Lauderdale FL headquarters.

Contact details

Email: andrey@shestakovyachtsales.com

Web: shestakovyachtsales.com/en/

Telephones

USA: +1(954)274-4435

Office hours

Monday – Saturday: **9:00 - 21:00** EDT

Sunday: **closed**

Address



Harbour Towne Marina, 850 NE 3rd St,
STE 213, Dania, FL 33004