

## SAFINA — LM GLASFIBER OF DENMARK



**Builder:** LM GLASFIBER OF DENMARK

**LOA:** 29' 4" (8.94mm)

**Year Built:** 1983

**Beam:** 9.5

**Model:** Motorsailer

**Max Draft:** 4' 5" (1.35mm)

**Price:** \$37,995 USD

**Location:** United States

Our experienced yacht broker, Andrey Shestakov, will help you choose and buy a yacht that best suits your needs **Safina — LM GLASFIBER OF DENMARK** from our catalogue. Presently, at Shestakov Yacht Sales Inc., we have a wide variety of yachts available on our sale's list. We also work in close contact with all the big yacht manufacturers from all over the world.

If you would like to buy a yacht **Safina — LM GLASFIBER OF DENMARK** or would like help answering any questions concerning purchasing, selling or chartering a yacht, please call **+1(954)274-4435**

---

# TABLE OF CONTENTS

---

TABLE OF CONTENTS	2
SPECIFICATIONS	3
Overview	3
Basic Information	3
Dimensions	3
Speed, Capacities and Weight	3
Accommodations	3
Hull and Deck Information	4
Engine Information	4
PHOTOS	5
CONTACTS	12
Contact details	12
Telephones	12
Office hours	12
Address	12

---

# SPECIFICATIONS

---

## Overview

---

1983 LM28 Danish Cockpit Motorsailer "Safina" is a comfortable seaworthy daysailer with good sailing characteristics and excellent accommodations for her size! Beautiful Rich Interior, Dry and Bright. The Volvo Penta 28HP Saildrive diesel engine motors her comfortably and efficiently! The LM28 was designed by Danish designer Bent Jull Anderson and built by LM Glasfiber in Kolding, Denmark. "Safina" is an affordable boat, fun to sail and would make a great first boat for someone without breaking the bank! Daysails or weekend overnights are within reach with this well thought out Motorsailer! Please call to get aboard and you can be sailing this summer!!

## Basic Information

---

**Category:** Motorsailor

**Model Year:** 1983

**Year Built:** 1983

**Country:** United States

## Dimensions

---

**LOA:** 29' 4" (8.94mm)

**LWL:** 24' 7" (7.49mm)

**LOD:** 28' 8" (8.74mm)

**Beam:** 9.5

**Max Draft:** 4' 5" (1.35mm)

## Speed, Capacities and Weight

---

**Water Capacity:** 30 Gallons

**Holding Tank:** 10 Gal Gallons

**Fuel Capacity:** 30 Gal Gallons

## Accommodations

---

**Total Cabins:** 1

**Total Berths:** 2

**Total Heads:** 1

---

## Hull and Deck Information

---

**Hull Material:** Fiberglass

---

## Engine Information

---

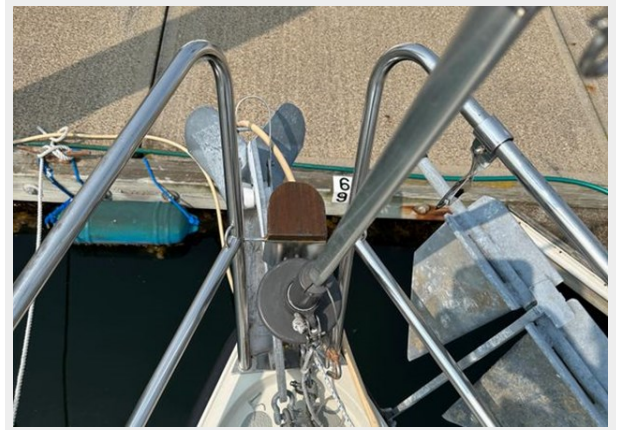
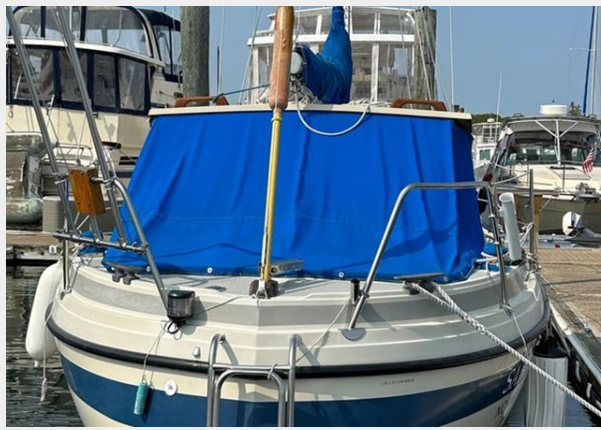
**Engines:** 1

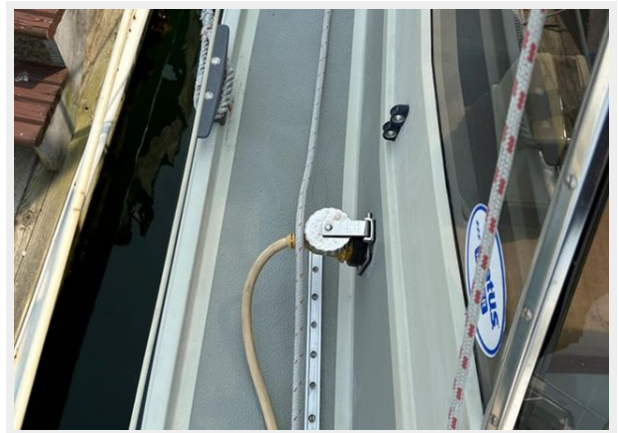
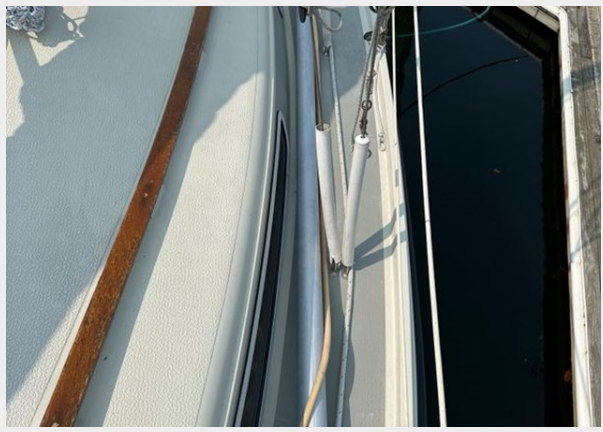
**Manufacturer:** Volvo Penta

**Engine Type:** Sail Drive

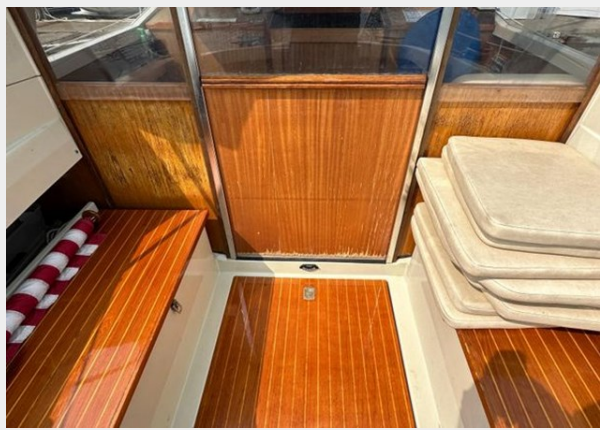
**Fuel Type:** Diesel

# PHOTOS

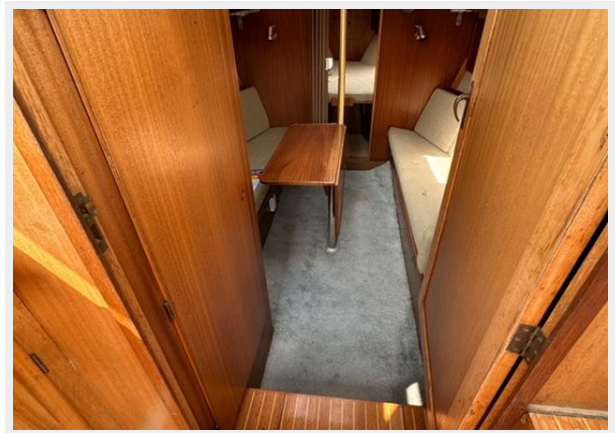


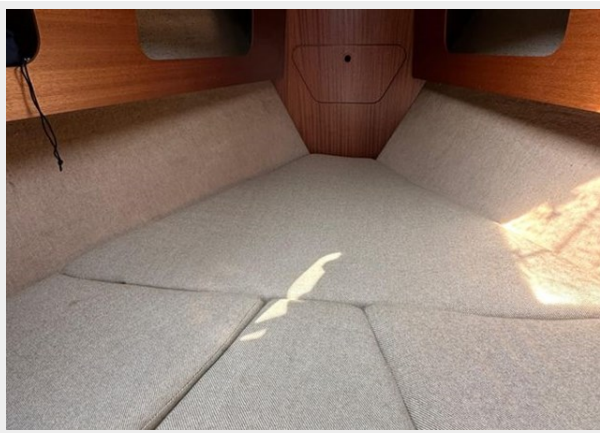


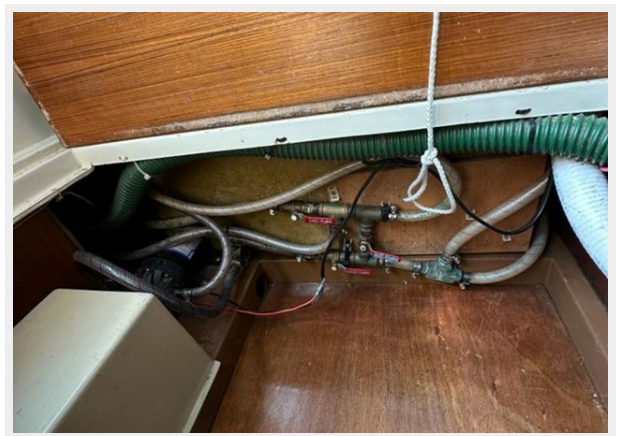












# CONTACTS

---

Andrey Shestakov, leading yacht broker of the sales department of Shestakov Yacht Sales Inc. Shestakov Yacht Sales Inc., the official representative of the Miami/Fort Lauderdale FL headquarters.

## Contact details

---

Email: **andrey@shestakovyachtsales.com**

Web: [shestakovyachtsales.com/en/](http://shestakovyachtsales.com/en/)

## Telephones

---

USA: +1(954)274-4435

## Office hours

---

Monday – Saturday: **9:00 - 21:00** EDT

Sunday: **closed**

## Address

---



Harbour Towne Marina, 850 NE 3rd St,  
STE 213, Dania, FL 33004