

2017 SEA PRO 208 BAY SERIES — SEA PRO



Builder: SEA PRO

Year Built: 2017

Model: center_console

Price: \$58,000 USD

Location: United States

LOA: 21' (6.4mm)

Beam: 8.33

Cruise Speed: 24 Knots Kts. (28 MPH)

Max Speed: 38 Knots Kts. (44 MPH)

Our experienced yacht broker, Andrey Shestakov, will help you choose and buy a yacht that best suits your needs 2017 Sea Pro 208 Bay Series — SEA PRO from our catalogue. Presently, at Shestakov Yacht Sales Inc., we have a wide variety of yachts available on our sale's list. We also work in close contact with all the big yacht manufacturers from all over the world.

If you would like to buy a yacht 2017 Sea Pro 208 Bay Series — SEA PRO or would like help answering any questions concerning purchasing, selling or chartering a yacht, please call **+1(954)274-4435**

TABLE OF CONTENTS

TABLE OF CONTENTS	2
SPECIFICATIONS	3
Overview	3
Basic Information	3
Dimensions	3
Speed, Capacities and Weight	3
Hull and Deck Information	3
Engine Information	4
PHOTOS	5
CONTACTS	11
Contact details	11
Telephones	11
Office hours	11
Address	11

SPECIFICATIONS

Overview

2017 208 Center Console with Tandem Axle Aluminum Trailer. 150 HP Suzuki serviced less than 10 hours ago mounted on a 6" jack plate. Mounted on the starboard side of the outboard is an 8' Blade Power Pole. There is also a 24-volt Riptide trolling motor with Spot Lock positioning system. Garmin navigation and engine monitoring systems. New updated hydraulic steering system with a tilt wheel. 600-watt stereo system with 6, 7.7" speakers. Two livewells and raw water washdown. Two batteries and a charger for the 24-volt trolling motor, two house batteries for the engine and 12-volt systems and electronics. The trailer has new brakes, tires, and hubs. It has been garage kept since it was 6 months old. It comes with a full storage cover. This boat in excellent condition has been meticulously maintained.

Basic Information

Category: center_console

Sub Category: Center Console

Model Year: 2017

Year Built: 2017

Country: United States

Dimensions

LOA: 21' (6.4mm)

Beam: 8.33

Speed, Capacities and Weight

Cruise Speed: 24 Knots Kts. (28 MPH)

Max Speed: 38 Knots Kts. (44 MPH)

Fuel Capacity: 61 Gal Gallons

Hull and Deck Information

Hull Material: Fiberglass

Engine Information

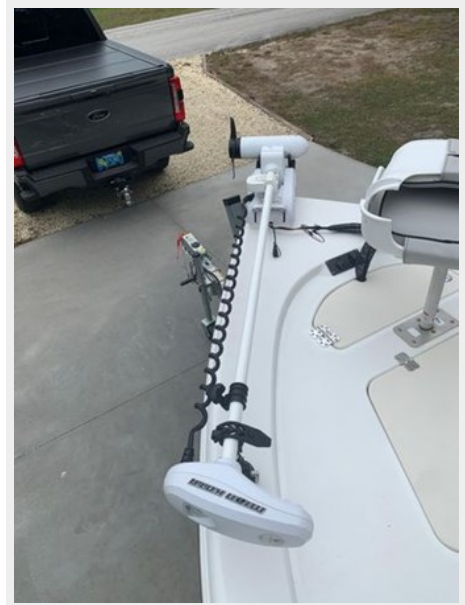
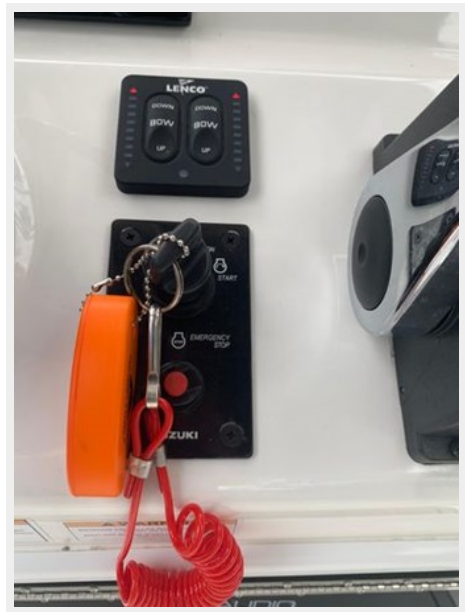
Engines: 1

Manufacturer: Yamaha

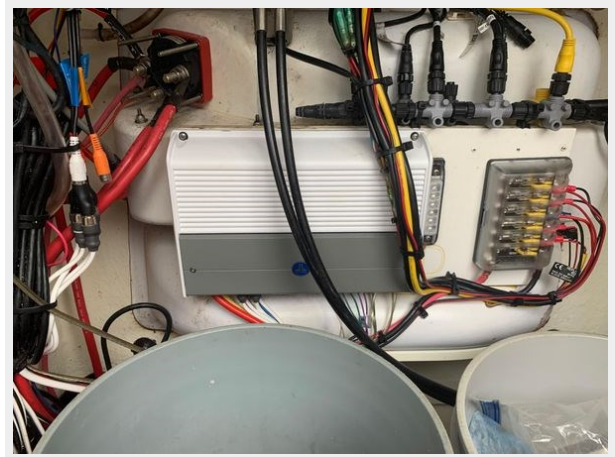
PHOTOS













CONTACTS

Andrey Shestakov, leading yacht broker of the sales department of Shestakov Yacht Sales Inc. Shestakov Yacht Sales Inc., the official representative of the Miami/Fort Lauderdale FL headquarters.

Contact details

Email: andrey@shestakovyachtsales.com

Web: shestakovyachtsales.com/en/

Telephones

USA: +1(954)274-4435

Office hours

Monday – Saturday: **9:00 - 21:00** EDT

Sunday: **closed**

Address



Harbour Towne Marina, 850 NE 3rd St,
STE 213, Dania, FL 33004