

2019 INTREPID 475 PANACEA — INTREPID POWERBOATS INC.



Builder: INTREPID POWERBOATS INC.

Year Built: 2019

Model: center_console

Price: \$865,000 USD

Location: United States

LOA: 47' (14.33m)

Beam: 13.66

Cruise Speed: 42 Knots Kts. (48 MPH)

Max Speed: 52 Knots Kts. (60 MPH)

Our experienced yacht broker, Andrey Shestakov, will help you choose and buy a yacht that best suits your needs 2019 Intrepid 475 Panacea — INTREPID POWERBOATS INC. from our catalogue. Presently, at Shestakov Yacht Sales Inc., we have a wide variety of yachts available on our sale's list. We also work in close contact with all the big yacht manufacturers from all over the world.

If you would like to buy a yacht 2019 Intrepid 475 Panacea — INTREPID POWERBOATS INC. or would like help answering any questions concerning purchasing, selling or chartering a yacht, please call +1(954)274-4435

TABLE OF CONTENTS

TABLE OF CONTENTS	2
SPECIFICATIONS	3
Overview	3
Basic Information	3
Dimensions	3
Speed, Capacities and Weight	4
Accommodations	4
Hull and Deck Information	4
Engine Information	4
PHOTOS	5
CONTACTS	10
Contact details	10
Telephones	10
Office hours	10
Address	10

SPECIFICATIONS

Overview

Exceptional opportunity to own a highly upgraded Luxury Center Console!The Panacea's size and versatile layout, along with luxurious cabin features allows for extended cruising destination for the entire family. Features:

- Fresh HULL MAX 8/2022
- New Upholstery 7/2022
- Quad Mercury 350 Verado's
- Platinum Extended Warranties to 2026
- Joystick Piloting
- Bow & Stern Thrusters
- 8KW Diesel Generator
- Sea Keeper 6
- Full Garmin Electronics, Radar, FUSION/JL Audio
- Custom Silver Metallic Hull Side Paint
- Custom Triple Aft Facing Seat w/ Baitwell
- TACO Grand Slam Outrigger System w/ 20' Carbon Fiber Poles
- Electric Retractable Cockpit Sunshade System
- Cabin Features Customer Wood Veneered Cabinetry, Separate Head & Shower, Actuated Dinette Table, Galley, Cabin A/C.
- Many more custom options

Basic Information

Category: center_console

Sub Category: Center Console

Model Year: 2019

Year Built: 2019

Country: United States

Dimensions

LOA: 47' (14.33mm)

Beam: 13.66

Speed, Capacities and Weight

Cruise Speed: 42 Knots Kts. (48 MPH)

Max Speed: 52 Knots Kts. (60 MPH)

Water Capacity: 130 Gallons

Fuel Capacity: 550 Gal Gallons

Accommodations

Total Berths: 1

Total Heads: 1

Hull and Deck Information

Hull Material: Fiberglass

Engine Information

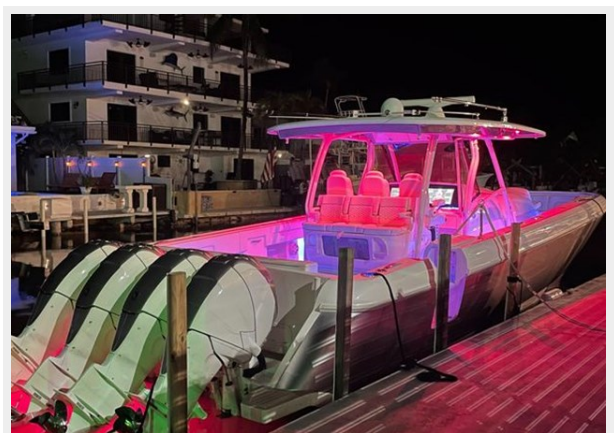
Engines: 4

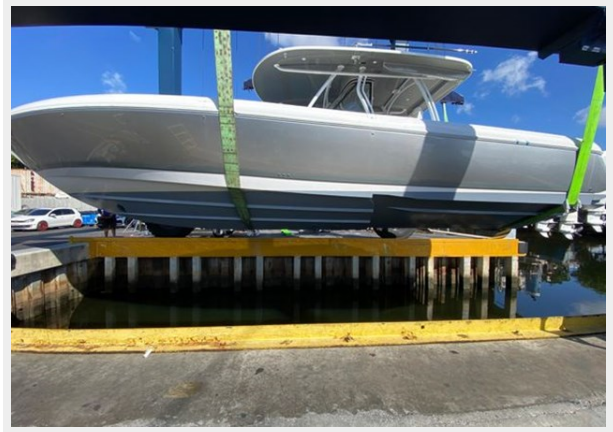
Manufacturer: Mercury

Engine Type: Outboard

Fuel Type: Gas

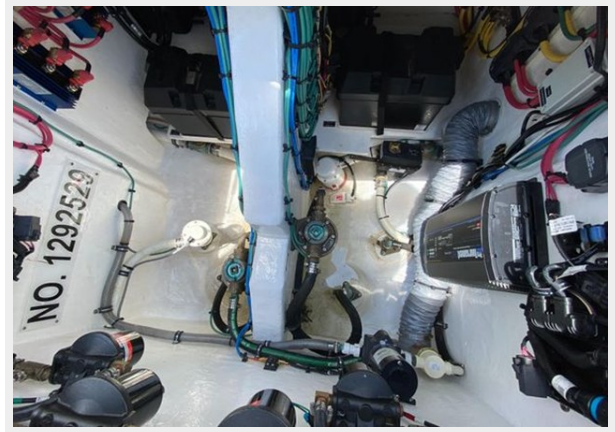
PHOTOS











CONTACTS

Andrey Shestakov, leading yacht broker of the sales department of Shestakov Yacht Sales Inc. Shestakov Yacht Sales Inc., the official representative of the Miami/Fort Lauderdale FL headquarters.

Contact details

Email: andrey@shestakovyachtsales.com

Web: shestakovyachtsales.com/en/

Telephones

USA: +1(954)274-4435

Office hours

Monday – Saturday: **9:00 - 21:00** EDT

Sunday: **closed**

Address



Harbour Towne Marina, 850 NE 3rd St,
STE 213, Dania, FL 33004