

TIMELESS — TRUMPY



Builder: TRUMPY

Year Built: 1947

Model: Raised Pilothouse

Price: \$2,900,000 USD

Location: United States

LOA: 80' (24.38mm)

Beam: 18

Min Draft: 4' (1.22mm)

Max Draft: 5' (1.52mm)

Cruise Speed: 10 Knots Kts. (12 MPH)

Max Speed: 12 Knots Kts. (14 MPH)

Our experienced yacht broker, Andrey Shestakov, will help you choose and buy a yacht that best suits your needs **Timeless — TRUMPY** from our catalogue. Presently, at Shestakov Yacht Sales Inc., we have a wide variety of yachts available on our sale's list. We also work in close contact with all the big yacht manufacturers from all over the world.

If you would like to buy a yacht **Timeless — TRUMPY** or would like help answering any questions concerning purchasing, selling or chartering a yacht, please call **+1(954)274-4435**

TABLE OF CONTENTS

TABLE OF CONTENTS	2
SPECIFICATIONS	3
Overview	3
Basic Information	3
Dimensions	3
Speed, Capacities and Weight	3
Accommodations	4
Hull and Deck Information	4
Engine Information	4
PHOTOS	5
CONTACTS	9
Contact details	9
Telephones	9
Office hours	9
Address	9

SPECIFICATIONS

Overview

Timeless was originally named 'Seaplay" and was Designed and built by John Trumpy as a "luxury cruising houseboat. She was commissioned by George W. Codrington of Cleveland, Ohio who was VP of General Motors and a member of the New York yacht Club and Larchmont Yacht Club Her hull was built at the Trumpy location in Camden, NJ and then was towed to the Trumpy yacht yard in Annapolis where she was completed and launched in 1947 and christened SeaplaySEAPLAYs names, in order, include NATAMOR II, SEAWAY, BEAU RIVAGE, SS SOPHIE and BB She was renamed TIMELESS when bought by her current owner in 2021.

Basic Information

Category: Raised Pilothouse

Sub Category: Raised Pilothouse

Model Year: 1947

Year Built: 1947

Country: United States

Dimensions

LOA: 80' (24.38mm)

Beam: 18

Min Draft: 4' (1.22mm)

Max Draft: 5' (1.52mm)

Speed, Capacities and Weight

Cruise Speed: 10 Knots Kts. (12 MPH)

Cruise Speed Range: 400

Max Speed: 12 Knots Kts. (14 MPH)

Max Speed Range: 330 Kts.

Gross Tonnage: 110 Pounds

Water Capacity: 400 Gallons

Holding Tank: 240 Gal Gallons

Fuel Capacity: 1200 Gal Gallons

Accommodations

Total Cabins: 4

Total Berths: 6

Sleeps: 8

Total Heads: 3

Crew Cabin: 2

Crew Berths: 2

Crew Heads: 1

Hull and Deck Information

Hull Material: Wood

Deck Material: Teak

Hull Designer: Trumpy

Interior Designer: Trumpy

Engine Information

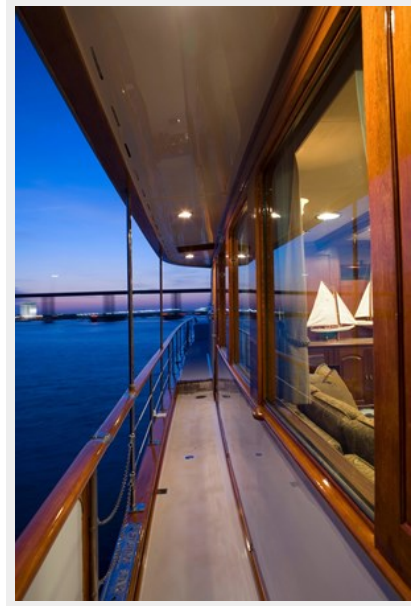
Engines: 2

Manufacturer: John Deere

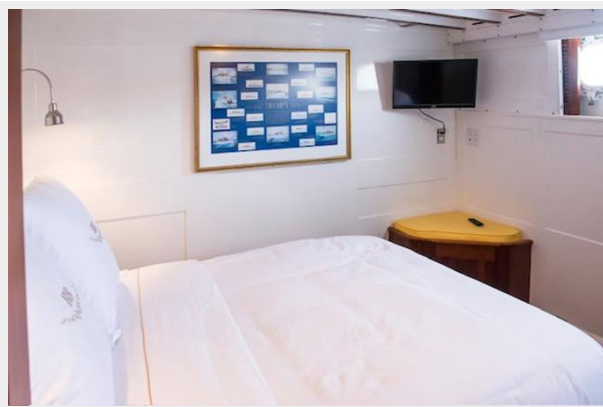
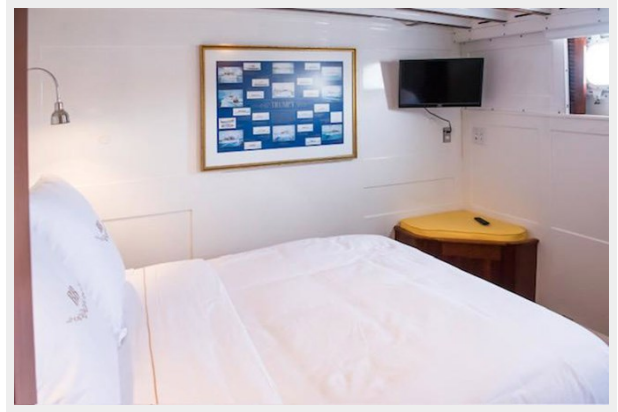
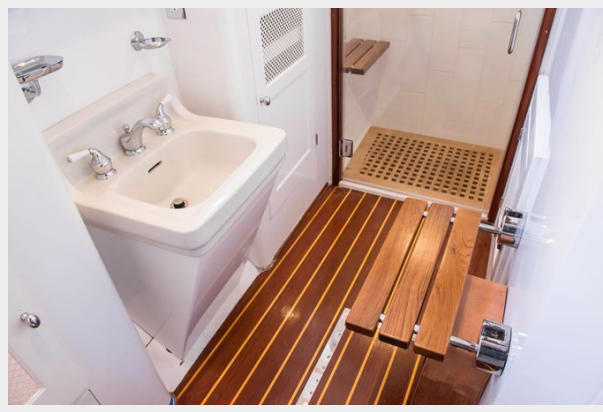
Engine Type: Inboard

Fuel Type: Diesel

PHOTOS









CONTACTS

Andrey Shestakov, leading yacht broker of the sales department of Shestakov Yacht Sales Inc. Shestakov Yacht Sales Inc., the official representative of the Miami/Fort Lauderdale FL headquarters.

Contact details

Email: andrey@shestakovyachtsales.com

Web: shestakovyachtsales.com/en/

Telephones

USA: +1(954)274-4435

Office hours

Monday – Saturday: **9:00 - 21:00** EDT

Sunday: **closed**

Address



Harbour Towne Marina, 850 NE 3rd St,
STE 213, Dania, FL 33004