

S-M — PRINCESS YACHTS



Builder: PRINCESS YACHTS

Year Built: 2010

Model: Motor Yacht

Price: PRICE ON APPLICATION

Location: Turkey

LOA: 96' 6" (29.41mm)

Beam: 23.16

Max Draft: 6' 1" (1.84mm)

Cruise Speed: 20 Knots Kts. (23 MPH)

Max Speed: 28 Knots Kts. (32 MPH)

Our experienced yacht broker, Andrey Shestakov, will help you choose and buy a yacht that best suits your needs S-M — PRINCESS YACHTS from our catalogue. Presently, at Shestakov Yacht Sales Inc., we have a wide variety of yachts available on our sale's list. We also work in close contact with all the big yacht manufacturers from all over the world.

If you would like to buy a yacht S-M — PRINCESS YACHTS or would like help answering any questions concerning purchasing, selling or chartering a yacht, please call +1(954)274-4435

TABLE OF CONTENTS

TABLE OF CONTENTS	2
SPECIFICATIONS	4
Basic Information	4
Dimensions	4
Speed, Capacities and Weight	4
Accommodations	4
Hull and Deck Information	5
Engine Information	5
PHOTOS	6
2010 Princess 95 Motor Yacht	6
2010 Princess 95 Motor Yacht	6
011	6
2010 Princess 95 Motor Yacht	6
016	6
020	6
2010 Princess 95 Motor Yacht	7
023a	7
027	7
029	7
030	7
2010 Princess 95 Motor Yacht	7
035	8
036	8
037	8
039	8
040	8
2010 Princess 95 Motor Yacht	8
044	9

048	9
049	9
051	9
2010 Princess 95 Motor Yacht	9
056	9
057	10
058	10
061	10
063	10
064	10
066	10
067	11
2010 Princess 95 Motor Yacht	11
070	11
071	11
073	11
076	11
077	12
081	12
CONTACTS	13
Contact details	13
Telephones	13
Office hours	13
Address	13

SPECIFICATIONS

Basic Information

Category: Motor Yacht

Sub Category: Motor Yacht

Model Year: 2010

Year Built: 2010

Country: Turkey

Dimensions

LOA: 96' 6" (29.41mm)

Beam: 23.16

Max Draft: 6' 1" (1.84mm)

Speed, Capacities and Weight

Cruise Speed: 20 Knots Kts. (23 MPH)

Max Speed: 28 Knots Kts. (32 MPH)

Gross Tonnage: 94 Pounds

Water Capacity: 1440 Gallons

Holding Tank: 97.74 Gal Gallons

Fuel Capacity: 2509.63 Gal Gallons

Accommodations

Total Cabins: 5

Total Berths: 5

Sleeps: 10

Total Heads: 5

Crew Cabin: 5

Crew Berths: 3

Crew Heads: 2

Hull and Deck Information

Hull Material: Fiberglass

Deck Material: Teak

Hull Configuration: Monohull

Hull Designer: Bernard Olesinski

Exterior Designer: Bernard Olesinski

Interior Designer: Princess

Engine Information

Engines: 2

Manufacturer: MTU

Engine Type: Inboard

Fuel Type: Diesel

PHOTOS

2010 Princess 95 Motor Yacht



2010 Princess 95 Motor Yacht



011



2010 Princess 95 Motor Yacht



016



020



2010 Princess 95 Motor Yacht

023a



027

029



030

2010 Princess 95 Motor Yacht



035



036



037



039



040



2010 Princess 95 Motor Yacht



044



048



049

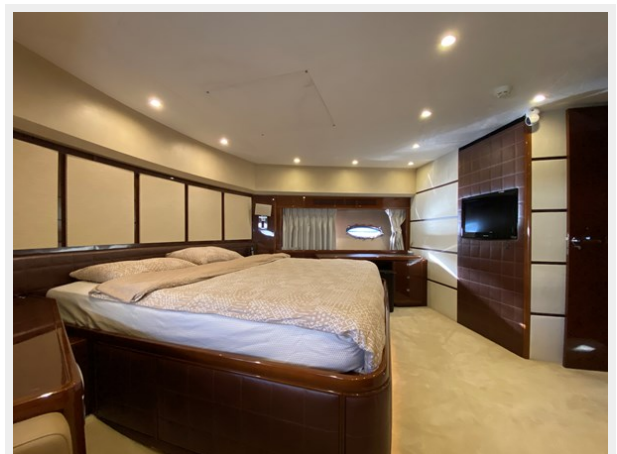


051



2010 Princess 95 Motor Yacht

056



057



058



061



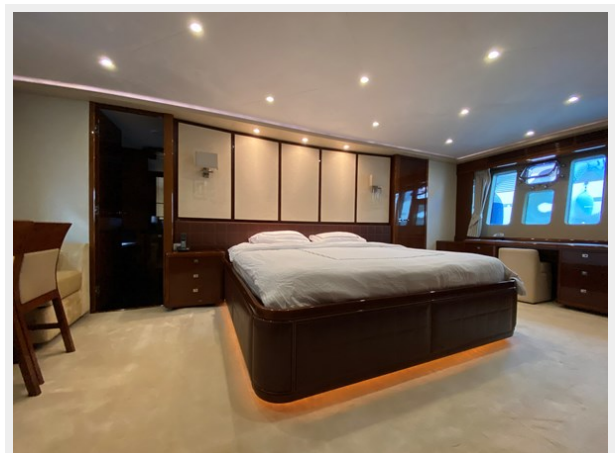
063



064



066



067



2010 Princess 95 Motor Yacht



070



071



073



076



077



081



CONTACTS

Andrey Shestakov, leading yacht broker of the sales department of Shestakov Yacht Sales Inc. Shestakov Yacht Sales Inc., the official representative of the Miami/Fort Lauderdale FL headquarters.

Contact details

Email: andrey@shestakovyachtsales.com

Web: shestakovyachtsales.com/en/

Telephones

USA: +1(954)274-4435

Office hours

Monday – Saturday: **9:00 - 21:00** EDT

Sunday: **closed**

Address



Harbour Towne Marina, 850 NE 3rd St,
STE 213, Dania, FL 33004