

DEEP POWDER — GRAND BANKS



Builder: GRAND BANKS

Year Built: 2006

Model: cruiser

Price: \$739,000 USD

Location: United States

LOA: 54' (16.46mm)

Beam: 16

Min Draft: 3' 6" (1.07mm)

Max Draft: 4' 6" (1.37mm)

Cruise Speed: 20 Knots Kts. (23 MPH)

Max Speed: 24 Knots Kts. (28 MPH)

Our experienced yacht broker, Andrey Shestakov, will help you choose and buy a yacht that best suits your needs **DEEP POWDER — GRAND BANKS** from our catalogue. Presently, at Shestakov Yacht Sales Inc., we have a wide variety of yachts available on our sale's list. We also work in close contact with all the big yacht manufacturers from all over the world.

If you would like to buy a yacht **DEEP POWDER — GRAND BANKS** or would like help answering any questions concerning purchasing, selling or chartering a yacht, please call **+1(954)274-4435**

TABLE OF CONTENTS

TABLE OF CONTENTS	2
SPECIFICATIONS	3
Overview	3
Basic Information	3
Dimensions	3
Speed, Capacities and Weight	4
Accommodations	4
Hull and Deck Information	4
Engine Information	4
PHOTOS	5
CONTACTS	13
Contact details	13
Telephones	13
Office hours	13
Address	13

SPECIFICATIONS

Overview

Indoor heated storage paid until June 2024 BRING ALL OFFERS 1000hr service and after cooler work just completed Deep Powder features a custom 2 stateroom layout with both heads ensuite and a separate office arrangement . She is powered with the desired twin 800hp CAT 3406 E's with 1090 approx. hours as of Sept 223 She has been in fresh water in lake Michigan since 2013 and stores in the best boatyard in the great lakes with an open checkbook policy. Since the fall of 2021 she has received a complete hull repaint Her non skid decks were repainted in 2022 and all her exterior varnish has been brought back to bare wood and refinished with 13 coats of fresh varnish .She summers in downtown Chicago and for the winter she is stored indoors in a heated building.The 54 Eastbay is one of the most highly regarded down east express yachts in her class with her deep-vee hull, substantial weight and Grand Banks high quality build standards combined with Ray Hunt's fantastic design. Please call immediately to view this stunning vessel she won't disappoint

Basic Information

Category: cruiser

Sub Category: Downeast

Model Year: 2006

Year Built: 2006

Country: United States

Dimensions

LOA: 54' (16.46mm)

Beam: 16

Min Draft: 3' 6" (1.07mm)

Max Draft: 4' 6" (1.37mm)

Speed, Capacities and Weight

Cruise Speed: 20 Knots Kts. (23 MPH)

Cruise Speed Range: 300

Max Speed: 24 Knots Kts. (28 MPH)

Max Speed Range: 200 Kts.

Gross Tonnage: 66 Pounds

Water Capacity: 200 Gallons

Holding Tank: 100 Gal Gallons

Fuel Capacity: 800 Gal Gallons

Accommodations

Total Cabins: 3

Total Berths: 6

Sleeps: 6

Total Heads: 2

Crew Cabin: 2

Crew Berths: 2

Crew Heads: 1

Hull and Deck Information

Hull Material: Fiberglass

Deck Material: Teak

Hull Configuration: Semi-Displacement

Hull Designer: Robert J. Dorris

Interior Designer: Robert J. Dorris

Engine Information

Engines: 2

Manufacturer: Caterpillar

Engine Type: Inboard

Fuel Type: Diesel

PHOTOS



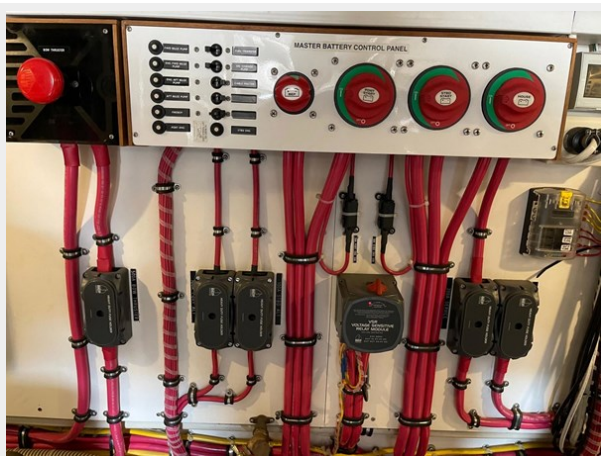














CONTACTS

Andrey Shestakov, leading yacht broker of the sales department of Shestakov Yacht Sales Inc. Shestakov Yacht Sales Inc., the official representative of the Miami/Fort Lauderdale FL headquarters.

Contact details

Email: andrey@shestakovyachtsales.com

Web: shestakovyachtsales.com/en/

Telephones

USA: +1(954)274-4435

Office hours

Monday – Saturday: **9:00 - 21:00** EDT

Sunday: **closed**

Address



Harbour Towne Marina, 850 NE 3rd St,
STE 213, Dania, FL 33004