

ISLAND GIRL — OCEAN ALEXANDER



Builder: OCEAN ALEXANDER

Year Built: 2011

Model: Pilothouse

Price: \$2,149,000 USD

Location: United States

LOA: 71' 8" (21.84mm)

Beam: 18.83

Max Draft: 5' (1.52mm)

Cruise Speed: 22 Knots Kts. (25 MPH)

Max Speed: 26 Knots Kts. (30 MPH)

Our experienced yacht broker, Andrey Shestakov, will help you choose and buy a yacht that best suits your needs **Island Girl — OCEAN ALEXANDER** from our catalogue. Presently, at Shestakov Yacht Sales Inc., we have a wide variety of yachts available on our sale's list. We also work in close contact with all the big yacht manufacturers from all over the world.

If you would like to buy a yacht **Island Girl — OCEAN ALEXANDER** or would like help answering any questions concerning purchasing, selling or chartering a yacht, please call **+1(954)274-4435**

TABLE OF CONTENTS

TABLE OF CONTENTS	2
SPECIFICATIONS	3
Overview	3
Basic Information	4
Dimensions	4
Speed, Capacities and Weight	4
Accommodations	4
Hull and Deck Information	4
Engine Information	4
PHOTOS	5
CONTACTS	18
Contact details	18
Telephones	18
Office hours	18
Address	18

SPECIFICATIONS

Overview

2011 Ocean Alexander Pilothouse Motor Yacht "Island Girl" is a traditional styled Ocean Alexander which was purchased by an exceptionally skilled Captain/Owner who has always made it his mission to "optimize" every yacht he's owned. This one is no exception, and the following detail will provide some of the reflection of his efforts. The vessel was actually in very good condition when he acquired it. The boat now is truly in "Bristol" condition, and it is apparent from every angle. His efforts have resulted in providing a fortunate buyer with effectively an almost new, reliable, efficient, blue-water pilothouse motor yacht to make any adventure an extremely confident and comfortable experience. Relative to any other comparable boats on the market, this one stands out, and will no doubt sell itself based on its current condition and state of the art equipment. As you step onto 'Island Girl' and her beautiful teak aft deck, you immediately feel its luxurious vibe. There is a full wet bar where you can socialize while enjoying incredible ocean views, along with enough seating for eight people at the custom high gloss teak table. Forward on the bow, a large sun pad invites you to chill out under the sun and enjoy the ocean breeze. Passing through elegant glass doors, you enter a spacious salon bathed in natural light. Designed for comfort and style, it provides the perfect place to relax or hang out with friends. The seating area is arranged around an entertainment system and offers options for privacy using Roman blinds and tinted doors. Additionally, there's a well-stocked wet bar with a wine cooler, sink, and storage for your convenience. Using a private staircase from the main salon, you'll reach the master suite. This large suite features a king-sized bed, large windows, a makeup mirror with a stool, and two ensuite bathrooms with a multi-head shower. It offers plenty of storage, including a large closet lined with cedar, creating a peaceful retreat with many thoughtful touches. Moving forward through the salon, you'll discover the galley and pilot house, a practical yet sophisticated area with ample seating around a generously sized table. The galley is a culinary haven with granite countertops, beautiful satin teakwood cabinetry, and magnificent custom inlaid teak and holly flooring. Down the stairs forward of the pilot house, you'll find the guest staterooms. The VIP stateroom has a custom-sized queen bed, while the second guest stateroom offers a double bed for comfort and privacy. Both staterooms have ensuites with ample storage. For outdoor luxury, head to the flybridge using the stairs from the galley. It features a second helm with the latest Furuno instrumentation, a custom high gloss teak table, a wet bar with a sink, refrigerator, and an ice maker for added convenience, along with comfortable seating with fresh upholstery. Aft of the bridge deck, you will find a new custom-built grill cabinet with underneath storage featuring a Fire Magic stainless propane grill and a custom Stamoid cover. The cabinet has been painted with Awlgrip to match the boat. Additionally, the bridge is equipped with a Steelhead 1500-pound davit with a power boom, offering both power extension and rotation. 'ISLAND GIRL' isn't just any yacht; it's a floating masterpiece awaiting its next adventure with a discerning owner. If you imagine sailing the seas in unmatched elegance, seize the chance to own 'ISLAND GIRL.' Reach out to us now to arrange a private viewing and experience top-tier nautical luxury.

Basic Information

Category: Pilothouse

Sub Category: Pilothouse

Model Year: 2011

Year Built: 2011

Country: United States

Dimensions

LOA: 71' 8" (21.84mm)

Beam: 18.83

Max Draft: 5' (1.52mm)

Speed, Capacities and Weight

Cruise Speed: 22 Knots Kts. (25 MPH)

Max Speed: 26 Knots Kts. (30 MPH)

Water Capacity: 300 Gallons

Fuel Capacity: 600 Gal Gallons

Accommodations

Total Cabins: 4

Total Berths: 4

Total Heads: 5

Hull and Deck Information

Hull Material: Fiberglass

Engine Information

Engines: 3

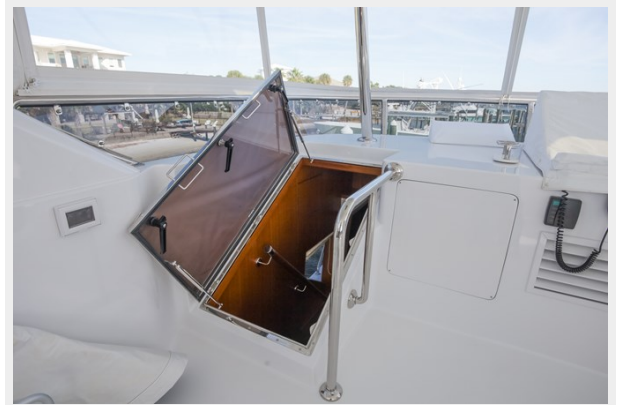
Manufacturer: Caterpillar

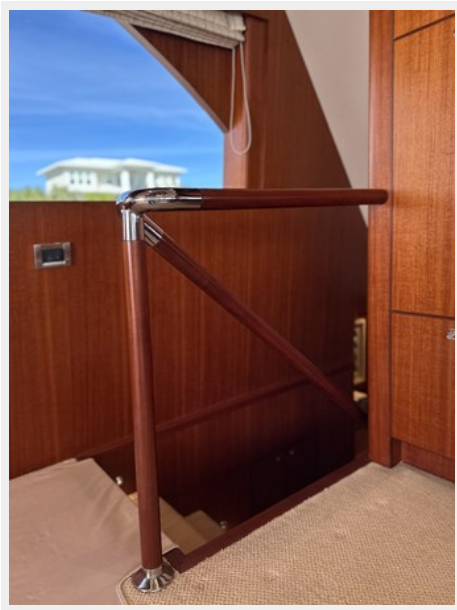
Engine Type: Inboard

Fuel Type: Diesel

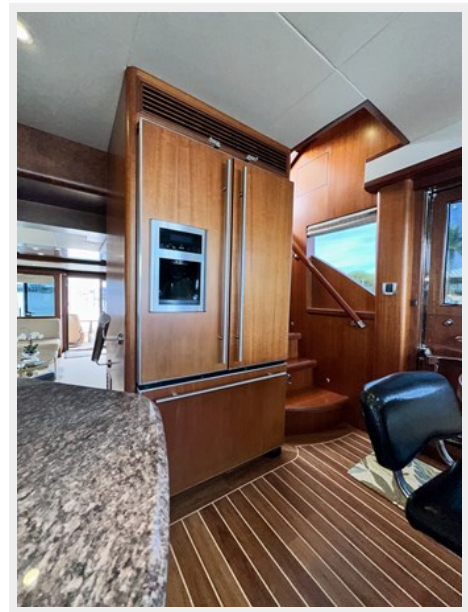
PHOTOS

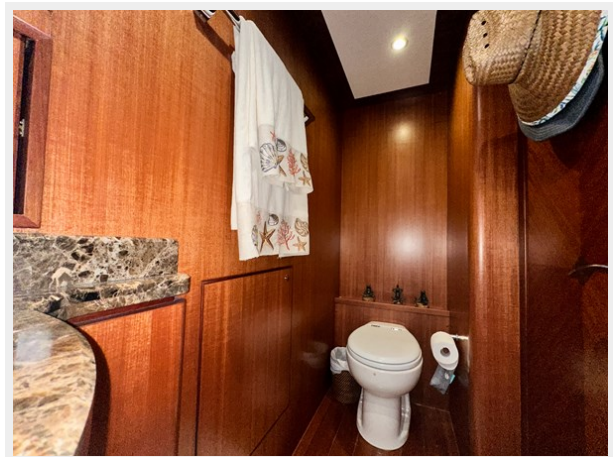




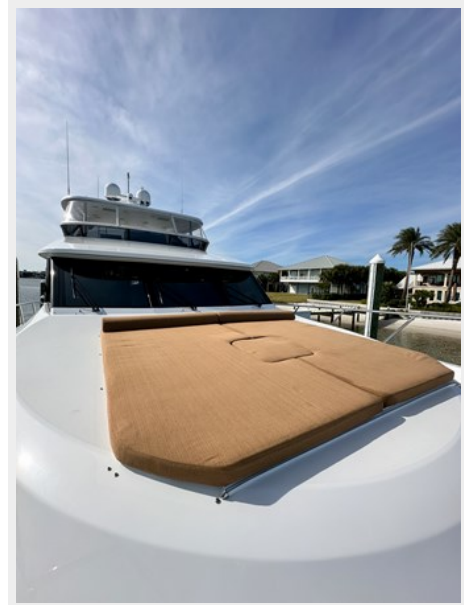
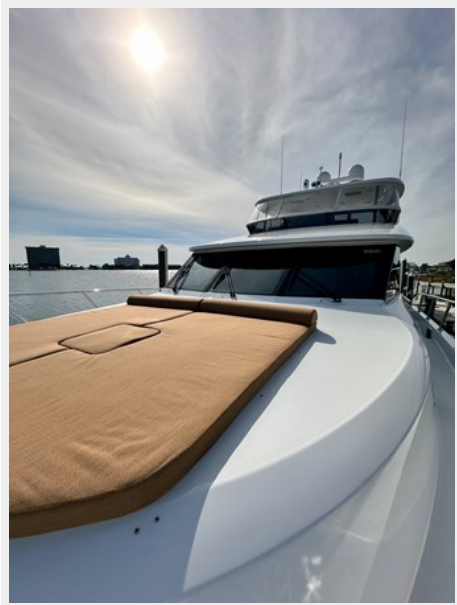










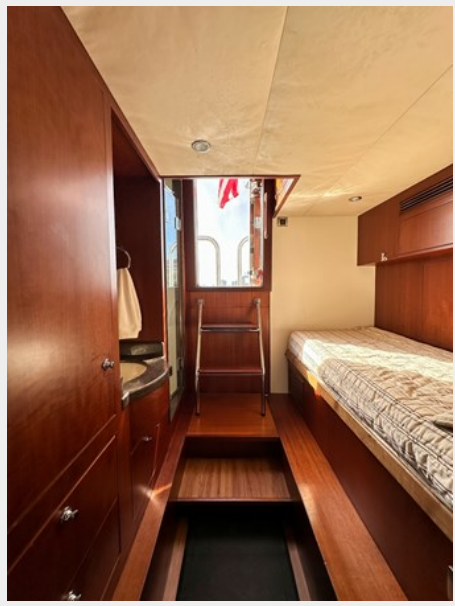












CONTACTS

Andrey Shestakov, leading yacht broker of the sales department of Shestakov Yacht Sales Inc. Shestakov Yacht Sales Inc., the official representative of the Miami/Fort Lauderdale FL headquarters.

Contact details

Email: andrey@shestakovyachtsales.com

Web: shestakovyachtsales.com/en/

Telephones

USA: +1(954)274-4435

Office hours

Monday – Saturday: **9:00 - 21:00** EDT

Sunday: **closed**

Address



Harbour Towne Marina, 850 NE 3rd St,
STE 213, Dania, FL 33004