

## ONEIDA — CATALINA



**Builder:** CATALINA

**Year Built:** 2004

**Model:** Cruising Sailboat

**Price:** \$65,000 CAD

**Location:** Canada

**LOA:** 29' 5" (8.97m)

**Beam:** 10.33

**Min Draft:** 3' 9" (1.14m)

**Max Draft:** 3' 9" (1.14m)

Our experienced yacht broker, Andrey Shestakov, will help you choose and buy a yacht that best suits your needs **ONEIDA — CATALINA** from our catalogue. Presently, at Shestakov Yacht Sales Inc., we have a wide variety of yachts available on our sale's list. We also work in close contact with all the big yacht manufacturers from all over the world.

If you would like to buy a yacht **ONEIDA — CATALINA** or would like help answering any questions concerning purchasing, selling or chartering a yacht, please call **+1(954)274-4435**

# TABLE OF CONTENTS

TABLE OF CONTENTS	2
SPECIFICATIONS	5
Overview	5
Basic Information	5
Dimensions	5
Accommodations	5
Hull and Deck Information	5
Engine Information	6
PHOTOS	7
Dockside 1000004047	7
Rainbow 1000006280	7
In cradle toward bow IMG_1967	7
Stbd bow profile IMG_1770	7
Transom IMG_1768	8
Keel and cradle IMG_1772	8
Anchor & roller IMG_1742	8
Rudder & prop IMG_1769	8
Anchor locker IMG_1741	9
Mid-deck hatches & mast step IMG_1752	9
Port pit IMG_1776	9
Stbd pit IMG_1777	9
Helm cover IMG_1778	10
Primary winches 30CST IMG_1774	10
Nav instruments in pod IMG_1745	10
Chart plotter IMG_1751	10
Cockpit locker IMG_1743	11
Lazarette - breaker & shower IMG_1746	11
Lazarette - shore power cord IMG_1748	11

Propane tank in locker IMG_1744	11
Salon - stbd from fwd IMG_1957	12
Water tank IMG_1756	12
Salon - port side IMG_1764	12
Batteries & Holding tank IMG_1759	12
Freshwater pump IMG_1758	13
Salon - port from fwd IMG_1956	13
Nav stn IMG_1763	13
Refrigeration IMG_1754	13
Stove-oven IMG_1785	14
Engine insulation IMG_1782	14
Engine IMG_1783	14
Head IMG_1755	14
Aft cabin IMG_1760	15
Aft cabin IMG_1761	15
V-berth IMG_1953	15
V-berth IMG_1766	15
V-berth with filler cushion IMG_1779	16
V-berth - port IMG_1954	16
Fluxgate compass in bilge IMG_1780	16
Page 1 brochure IMG_2013	16
Page 2 brochure IMG_2014	17
Page 3 brochure IMG_2015	17
Page 4 brochure IMG_2017	17
<b>CONTACTS</b>	<b>18</b>
Contact details	18
Telephones	18
Office hours	18
Address	18



---

# SPECIFICATIONS

---

## Overview

---

The Catalina 28 Mk II is a perfect pocket cruiser. Spacious and very well proportioned on deck and below it is ideal for a couple or small family to day sail and cruise comfortably and safely.

ONEIDA has the versatile shallow draft wing keel and the classic, full batten mainsail

## Basic Information

---

**Category:** Cruising Sailboat

**Model Year:** 2004

**Year Built:** 2004

**Country:** Canada

## Dimensions

---

**LOA:** 29' 5" (8.97m)

**LWL:** 23' 10" (7.26m)

**Beam:** 10.33

**Min Draft:** 3' 9" (1.14m)

**Max Draft:** 3' 9" (1.14m)

## Accommodations

---

**Total Cabins:** 1

## Hull and Deck Information

---

**Hull Material:** Fiberglass

**Deck Material:** Fiberglass Sandwich

**Hull Configuration:** Round Bilged  
Displacement

---

## Engine Information

---

**Engines:** 1

**Manufacturer:** Universal

**Engine Type:** Inboard

**Fuel Type:** Diesel

# PHOTOS

**Rainbow 100006280**



**Dockside 100004047**



**In cradle toward bow IMG\_1967**



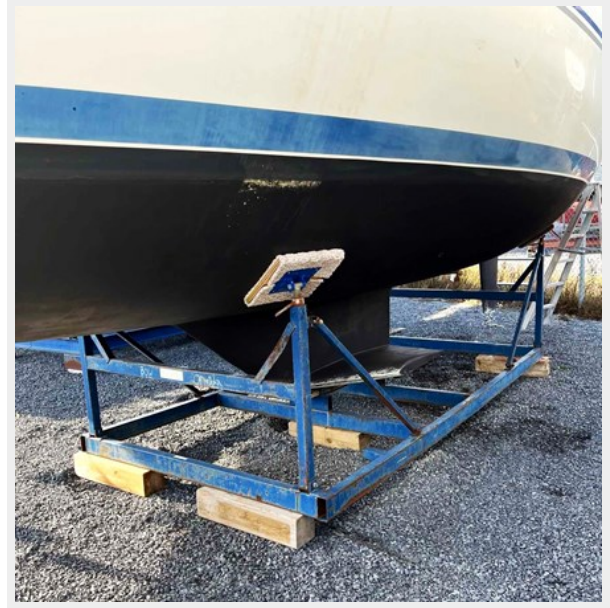
**Stbd bow profile IMG\_1770**



**Transom IMG\_1768**



**Keel and cradle IMG\_1772**



**Rudder & prop IMG\_1769**

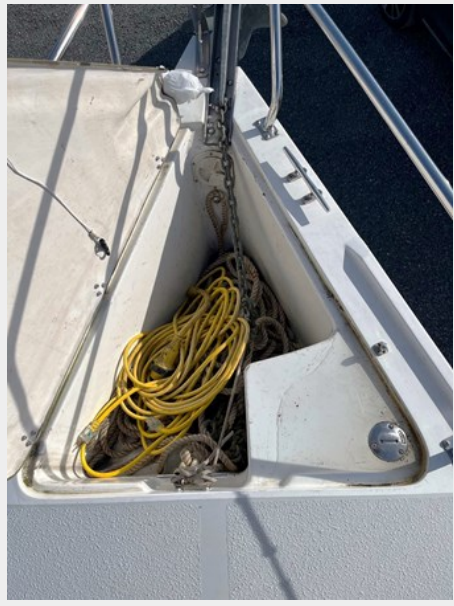


**Anchor & roller IMG\_1742**

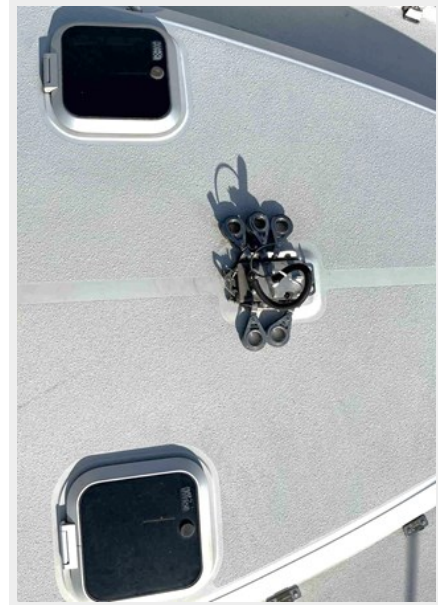




**Anchor locker IMG\_1741**



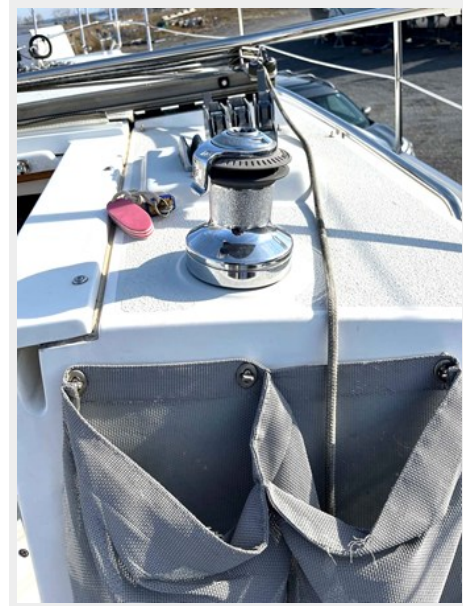
**Mid-deck hatches & mast step IMG\_1752**



**Port pit IMG\_1776**



**Stbd pit IMG\_1777**



Primary winches 30CST IMG\_1774



Helm cover IMG\_1778



Nav instruments in pod IMG\_1745



Chart plotter IMG\_1751



Cockpit locker IMG\_1743



Lazarette - breaker & shower IMG\_1746



Lazarette - shore power cord IMG\_1748



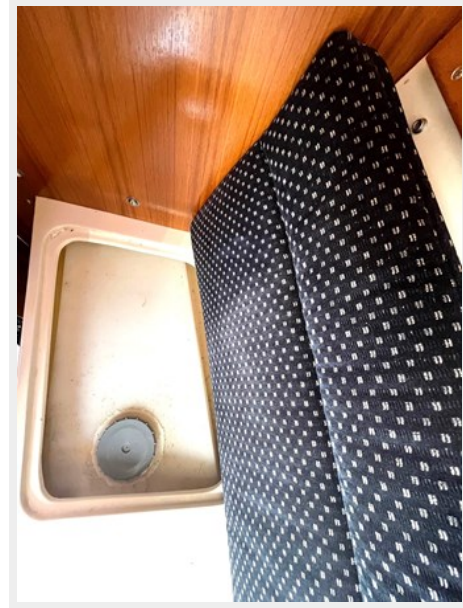
Propane tank in locker IMG\_1744



Salon - stbd from fwd IMG\_1957



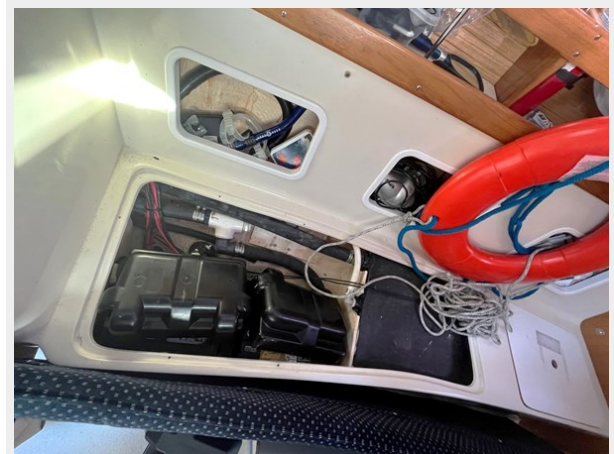
Water tank IMG\_1756



Salon - port side IMG\_1764



Batteries & Holding tank IMG\_1759



Freshwater pump IMG\_1758



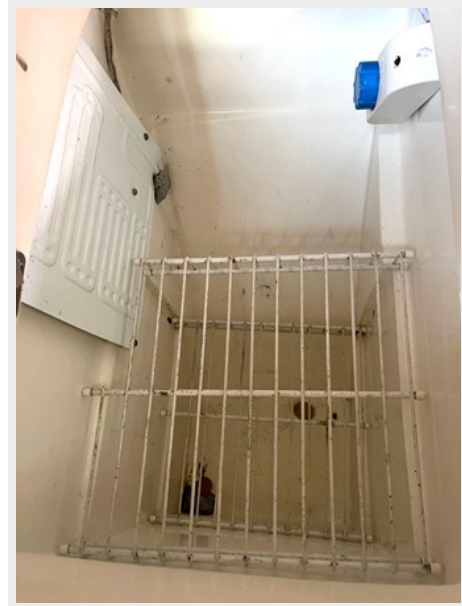
Salon - port from fwd IMG\_1956



Nav stn IMG\_1763



Refrigeration IMG\_1754



**Stove-oven IMG\_1785**



**Engine insulation IMG\_1782**



**Engine IMG\_1783**



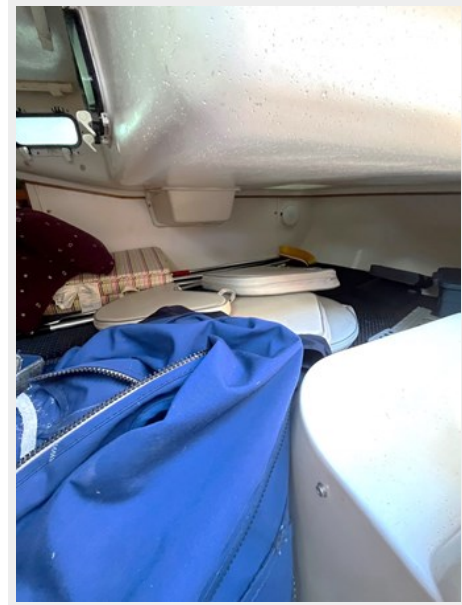
**Head IMG\_1755**



Aft cabin IMG\_1760



Aft cabin IMG\_1761



V-berth IMG\_1953



V-berth IMG\_1766



V-berth with filler cushion IMG\_1779



V-berth - port IMG\_1954



Fluxgate compass in bilge IMG\_1780



Page 1 brochure IMG\_2013







# CONTACTS

---

Andrey Shestakov, leading yacht broker of the sales department of Shestakov Yacht Sales Inc. Shestakov Yacht Sales Inc., the official representative of the Miami/Fort Lauderdale FL headquarters.

## Contact details

---

Email: [andrey@shestakovyachtsales.com](mailto:andrey@shestakovyachtsales.com)

Web: [shestakovyachtsales.com/en/](http://shestakovyachtsales.com/en/)

## Telephones

---

USA: +1(954)274-4435

## Office hours

---

Monday – Saturday: **9:00 - 21:00** EDT

Sunday: **closed**

## Address

---



Harbour Towne Marina, 850 NE 3rd St,  
STE 213, Dania, FL 33004