

## ONEIDA — CATALINA



**Судостроитель:** CATALINA

**Год постройки:** 2004

**Модель:** Крейсерская яхта

**Цена:** \$65,000 CAD

**Местонахождение:** Canada

**Длина общая:** 29' 5" (8.97m)

**Ширина:** 10.33

**Мин. осадка:** 3' 9" (1.14m)

**Макс. осадка:** 3' 9" (1.14m)

Купить **ONEIDA — CATALINA** а также выбрать подходящую вам яхту из нашего каталога яхт вам поможет опытный яхтенный брокер Андрей Шестаков. На сегодняшний день компания **Shestakov Yacht Sales Inc.** имеет большое количество яхт в собственном списке продаж, а также тесно сотрудничает со всеми крупными яхтенными производителями по всему миру.

Для того чтобы купить яхту **ONEIDA — CATALINA** а также проконсультироваться по любому вопросу связанному с покупкой, продажей, чартером яхт позвоните по телефону **+7(918)465-66-44**.

# ОГЛАВЛЕНИЕ

ОГЛАВЛЕНИЕ	2
ХАРАКТЕРИСТИКИ	5
Обзор	5
Основная информация	5
Размеры	5
Размещение	5
Корпус и палуба	5
Информация о двигателе	6
ФОТОГРАФИИ	7
Dockside 1000004047	7
Rainbow 1000006280	7
In cradle toward bow IMG_1967	7
Stbd bow profile IMG_1770	7
Transom IMG_1768	8
Keel and cradle IMG_1772	8
Anchor & roller IMG_1742	8
Rudder & prop IMG_1769	8
Anchor locker IMG_1741	9
Mid-deck hatches & mast step IMG_1752	9
Port pit IMG_1776	9
Stbd pit IMG_1777	9
Helm cover IMG_1778	10
Primary winches 30CST IMG_1774	10
Nav instruments in pod IMG_1745	10
Chart plotter IMG_1751	10
Cockpit locker IMG_1743	11
Lazarette - breaker & shower IMG_1746	11
Lazarette - shore power cord IMG_1748	11

Propane tank in locker IMG_1744	11
Salon - stbd from fwd IMG_1957	12
Water tank IMG_1756	12
Salon - port side IMG_1764	12
Batteries & Holding tank IMG_1759	12
Freshwater pump IMG_1758	13
Salon - port from fwd IMG_1956	13
Nav stn IMG_1763	13
Refrigeration IMG_1754	13
Stove-oven IMG_1785	14
Engine insulation IMG_1782	14
Engine IMG_1783	14
Head IMG_1755	14
Aft cabin IMG_1760	15
Aft cabin IMG_1761	15
V-berth IMG_1953	15
V-berth IMG_1766	15
V-berth with filler cushion IMG_1779	16
V-berth - port IMG_1954	16
Fluxgate compass in bilge IMG_1780	16
Page 1 brochure IMG_2013	16
Page 2 brochure IMG_2014	17
Page 3 brochure IMG_2015	17
Page 4 brochure IMG_2017	17
<b>КОНТАКТЫ</b>	<b>18</b>
Контактная информация	18
Телефоны	18
Время работы	18
Адрес	18



# ХАРАКТЕРИСТИКИ

## Обзор

The Catalina 28 Mk II is a perfect pocket cruiser. Spacious and very well proportioned on deck and below it is ideal for a couple or small family to day sail and cruise comfortably and safely.

ONEIDA has the versatile shallow draft wing keel and the classic, full batten mainsail

## Основная информация

**Тип судна:** Крейсерская яхта

**Модельный год:** 2004

**Год постройки:** 2004

**Страна:** Canada

## Размеры

**Длина общая:** 29' 5" (8.97m)

**Длина по ватерлинии:** 23' 10" (7.26m)

**Ширина:** 10.33

**Мин. осадка:** 3' 9" (1.14m)

**Макс. осадка:** 3' 9" (1.14m)

## Размещение

**Всего кают:** 1

## Корпус и палуба

**Материал корпуса:** Fiberglass

**Материал палубы:** Fiberglass Sandwich

**Комплектация корпуса:** Round Bilged  
Displacement

## Информация о двигателе

---

**Двигатели:** 1

**Производитель:** Universal

**Тип двигателя:** Inboard

**Тип топлива:** Diesel

# ФОТОГРАФИИ

**Rainbow 100006280**



**Dockside 100004047**



**In cradle toward bow IMG\_1967**



**Stbd bow profile IMG\_1770**

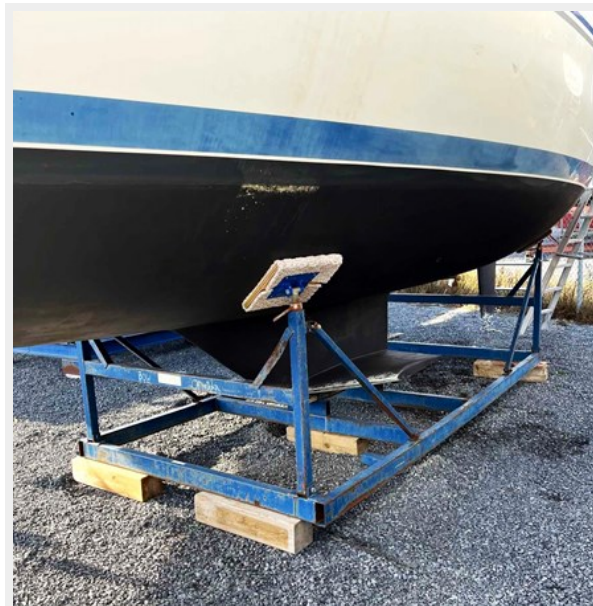




**Transom IMG\_1768**



**Keel and cradle IMG\_1772**



**Rudder & prop IMG\_1769**



**Anchor & roller IMG\_1742**





**Anchor locker IMG\_1741**



**Mid-deck hatches & mast step IMG\_1752**



**Port pit IMG\_1776**



**Stbd pit IMG\_1777**



Primary winches 30CST IMG\_1774



Helm cover IMG\_1778



Nav instruments in pod IMG\_1745



Chart plotter IMG\_1751





Cockpit locker IMG\_1743



Lazarette - breaker & shower IMG\_1746



Lazarette - shore power cord IMG\_1748



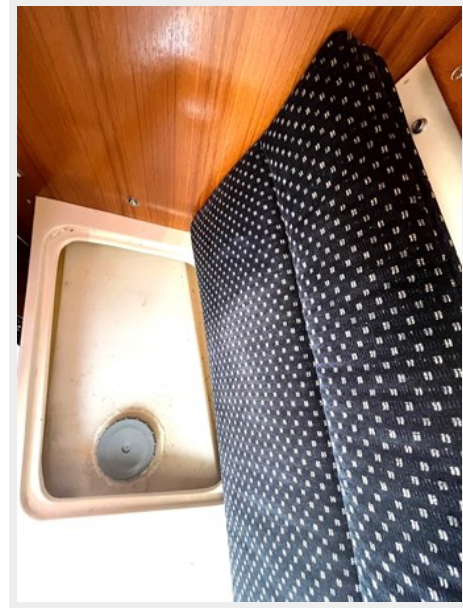
Propane tank in locker IMG\_1744



Salon - stbd from fwd IMG\_1957



Water tank IMG\_1756



Salon - port side IMG\_1764



Batteries & Holding tank IMG\_1759

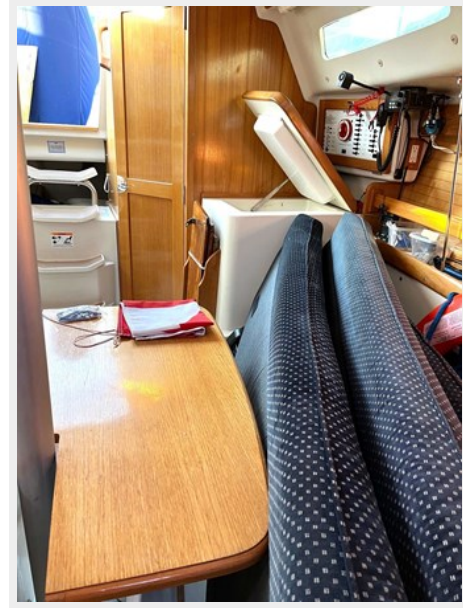




Freshwater pump IMG\_1758



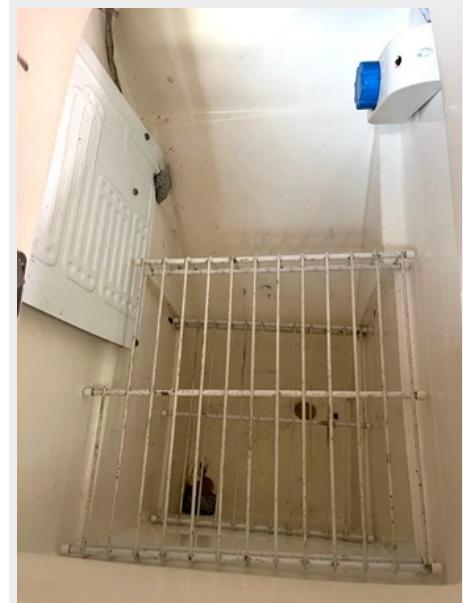
Salon - port from fwd IMG\_1956



Nav stn IMG\_1763



Refrigeration IMG\_1754



**Stove-oven IMG\_1785**



**Engine insulation IMG\_1782**



**Engine IMG\_1783**



**Head IMG\_1755**

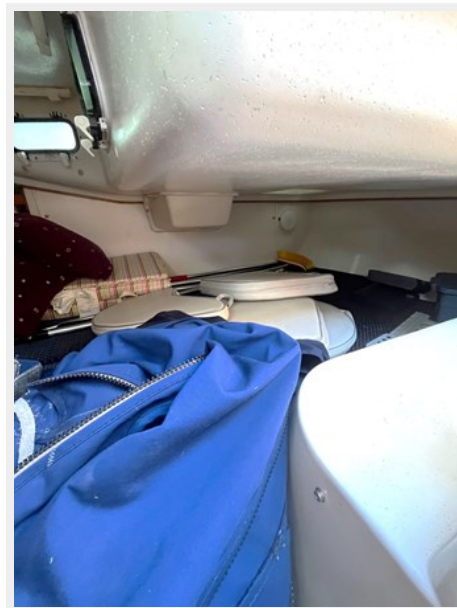




Aft cabin IMG\_1760



Aft cabin IMG\_1761



V-berth IMG\_1953



V-berth IMG\_1766





V-berth with filler cushion IMG\_1779



V-berth - port IMG\_1954



Fluxgate compass in bilge IMG\_1780



Page 1 brochure IMG\_2013



Page 2 brochure IMG\_2014



**Catalina 28 mark II**

The Catalina 28mark II incorporates the best modern features with Catalina's classic styling. This careful blend of innovation and traditional values has insured the Catalina 28mark II will give the best of both.

Notable features of the deck are the walk-through hatches, wide boarding platforms, and easy access forward on the wide, unobstructed weather decks.

The ergonomically correct cockpit seats and coverage reflect an understanding of the importance of the cockpit to the comfort of the crew. Battery, fuel and water tanks are a Catalina hallmark. The sail controls, including the single line reefing system, all lead to the security of the cockpit. The rig is reinforced with double spreaders, forest and all tower stands permitting powerful headwinds and narrow shooting angles for good windward performance.

The interior is spacious and comfortable. The galley and head are all for convenience to the cockpit. Special attention has been given to the traffic pattern, ventilation, storage and privacy.

The warm and inviting main cabin is a wonderful blend of rich, contemporary fabrics and the timeless beauty of oak and ash traditional finishes. Natural light and ventilation abound through numerous opening ports and hatches.

The seating galley is a marvel of space planning and convenience. Separate lockers for dishes, pans and dry food are all well located. Countertops are durable, easy to clean and have rounded surfaces. A galvanized stainless steel stove ensures to comply with the handy flip up cover.

The headroom is generous and all berths are extra long, unobstructed but welcome features in a twenty-eight footer.

To encourage you to cruise a Catalina 28 especially the year kind of sailing, an extensive list of equipment including a choice of wing or fin keel models is available.

A shooting yacht from any angle, the Catalina 28

Page 3 brochure IMG\_2015



It is built with the quality and attention to a sailor's vision of detail that makes her a sailing pleasure that you'll look forward to enjoying on any waters.

Page 4 brochure IMG\_2017



**Catalina Yachts**

21205 Wilshire Blvd., Woodland Hills, CA 91367  
Phone 818-886-7700 • Fax 818-886-5810  
http://www.catalinayachts.com

Sold and Serviced by:

**AMVC**  
Catalina Yacht Sales

<b>Catalina 28mark II (Fin Keel) Specifications</b>	
Length Overall	8.00m 26' 3"
Length at Waterline	7.50m 24' 6"
Beam	2.50m 8' 2"
Deck	1.50m 4' 9"
Ballast	1000kg 2200 lb
Autopilot	Standard
Engine	15HP 11.2kW
Ball Area	12.00m <sup>2</sup> 134 sq ft
Ball Area (Standard Rig)	11.50m <sup>2</sup> 124 sq ft
Ball Area (Wing Keel)	11.50m <sup>2</sup> 124 sq ft
Ball Area (Fin Keel)	11.50m <sup>2</sup> 124 sq ft
Ball Area (Wing Keel)	11.50m <sup>2</sup> 124 sq ft
Ball Area (Fin Keel)	11.50m <sup>2</sup> 124 sq ft

All measurements are approximate and subject to change without notice.

Please also consult your sales representative. Price is quoted plus standard for destination and tax and destination.

# КОНТАКТЫ

---

Андрей Шестаков (Andrey Shestakov) – ведущий яхтенный брокер отдела продаж яхт и судов компании Shestakov Yacht Sales Inc. Официальный представитель Shestakov Yacht Sales Inc. для русскоговорящих клиентов в центральном офисе компании в Майами/Форт Лодердейл/Флорида/США.

## Контактная информация

---

Email: [andrey@shestakovyachtsales.com](mailto:andrey@shestakovyachtsales.com)

Web: [shestakovyachtsales.com](http://shestakovyachtsales.com)

## Телефоны

---

Краснодарский край: **+7(918)465-66-44**

США, Майами, Флорида: **+1(954)274-4435**

## Время работы

---

Понедельник – Суббота: **9:00 - 21:00**  
EDT

Воскресенье: **Закрито**

## Адрес

---



Harbour Towne Marina, 850 NE 3rd St,  
STE 213, Dania, FL 33004