

2016 PRESTIGE YACHTS 750 — PRESTIGE



Builder: PRESTIGE

Year Built: 2016

Model: Mega Yacht

Price: \$2,499,000 USD

Location: United States

LOA: 74' 1" (22.58m)

Beam: 17.91

Cruise Speed: 24 Knots Kts. (28 MPH)

Max Speed: 28 Knots Kts. (32 MPH)

Our experienced yacht broker, Andrey Shestakov, will help you choose and buy a yacht that best suits your needs 2016 Prestige Yachts 750 — PRESTIGE from our catalogue. Presently, at Shestakov Yacht Sales Inc., we have a wide variety of yachts available on our sale's list. We also work in close contact with all the big yacht manufacturers from all over the world.

If you would like to buy a yacht 2016 Prestige Yachts 750 — PRESTIGE or would like help answering any questions concerning purchasing, selling or chartering a yacht, please call **+1(954)274-4435**

TABLE OF CONTENTS

TABLE OF CONTENTS	2
SPECIFICATIONS	3
Overview	3
Basic Information	4
Dimensions	4
Speed, Capacities and Weight	4
Hull and Deck Information	4
Engine Information	4
PHOTOS	5
CONTACTS	8
Contact details	8
Telephones	8
Office hours	8
Address	8

SPECIFICATIONS

Overview

The interior layout affords privacy and ease of movement on board, as the galley and dining area are on the same level, with a slight step up to the salon. Stretching fully across the cabin to a love seat on the starboard side, the main salon can easily accommodate eight guests, making it a perfect area for family and guests to relax and socialize. Forward of the helm is access to the beautiful, full-beam master stateroom. With plenty of space and ample storage, the owner's suite includes a lounge area to port, a desk to starboard, a large walk-in closet, and a head with a separate shower. Below deck are three guest staterooms, a VIP and two cabins with twin berths. A crew cabin with two berths is found in the stern of the boat. As you step aboard the teak covered deck, you notice the elegant and contemporary appeal the back cockpit has with retractable aft sunshade, mounted wood table and bench seating for multiple guests. As the semiautomatic stainless-steel saloon doors open you will find a sun-lit and spacious galley and salon accompanied by a stunning dining area only found on a yacht of this caliber. To your left, the galley provides all of the amenities needed for long luxurious travels. Framing the dining area is crafted dark wood storage compartments camouflaged as framing and small counter-space on top. A small step up from the galley and dining area, you are welcomed by a spacious and comfortable salon with 2 sofas and 2 lounge chairs able to seat a large group. Taking a small step up to the left, the Helm features leather bench seating and an array of non-glare Raymarine electronics. Moving down a few small steps, you are greeted by the stunning design and open-feel of the Owners Stateroom. With exceptional volume and plenty of room to walk around the room you will find a walk-in closet, desk, storage cabinets throughout and a master head prepared to accommodate 2 guests comfortably. Moving down the under-lit stairs you reach 3 staterooms and a forward head. The VIP guest stateroom located in the center of the vessel with large port windows lighting up the room, will wow your guests and is sometimes even chosen as the owner's suite, as both staterooms provide extreme elegance and space. The VIP's head compares to the size of the master head with generous storage and shower space. Across from the VIP stateroom is the 2 staterooms with twins in each, both rooms can easily be transformed into one larger bed with a middle insert. One berth has a connecting door to the forward head allowing for easy accessibility. The teak-lined walk-around bow gives the superyacht feel while leading you to a sunpad and bow seating area for those who like to enjoy the sun and the view. The flybridge overlooks the bow and the stunning atmosphere that your excursion provides. With an upper helm with a double bench and forward-facing settee, the entire family can enjoy the view from the captain's seat. A large mounted teak table and bench seating all around allows for large parties to have plenty of seating space. A spacious sunning area or room for tender lines the back of the flybridge. The crew quarters and engine room can be accessed from the swim platform through a water-tight transom door. Down a few steps, the entrance of the engine room with a combination washer/dryer to the left and the door to the crew cabin to the right. With adequate living space for sleeping and showering, the 750 provides a cabin to accommodate 2 crew members. The engine room is well laid out with adequate headroom and more than enough room to walk around the MAN engines. At the forward bulkhead, the twin generators and other

features such as Engine Oil Change System, Engine Driven Emergency Bilge Pump, Automatic Fire Fighting System, and a camera in engine room.

Basic Information

Category: Mega Yacht

Sub Category: Mega Yacht

Model Year: 2016

Year Built: 2016

Country: United States

Dimensions

LOA: 74' 1" (22.58mm)

Beam: 17.91

Speed, Capacities and Weight

Cruise Speed: 24 Knots Kts. (28 MPH)

Max Speed: 28 Knots Kts. (32 MPH)

Water Capacity: 222 Gallons

Holding Tank: 80 Gal Gallons

Fuel Capacity: 1168 Gal Gallons

Hull and Deck Information

Hull Material: Other

Engine Information

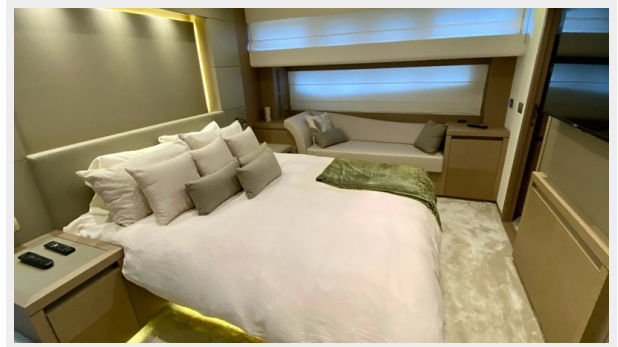
Engines: 2

Manufacturer: MAN

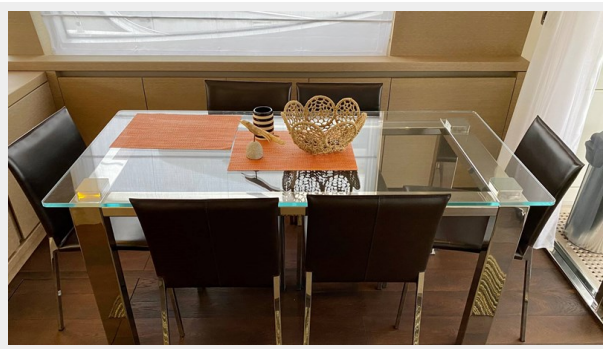
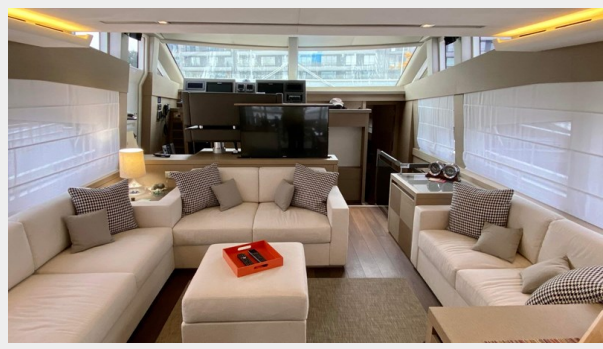
Engine Type: Inboard

Fuel Type: Diesel

PHOTOS







CONTACTS

Andrey Shestakov, leading yacht broker of the sales department of Shestakov Yacht Sales Inc. Shestakov Yacht Sales Inc., the official representative of the Miami/Fort Lauderdale FL headquarters.

Contact details

Email: andrey@shestakovyachtsales.com

Web: shestakovyachtsales.com/en/

Telephones

USA: +1(954)274-4435

Office hours

Monday – Saturday: **9:00 - 21:00** EDT

Sunday: **closed**

Address



Harbour Towne Marina, 850 NE 3rd St,
STE 213, Dania, FL 33004