

## 2016 PRESTIGE YACHTS 750 — PRESTIGE



**Судостроитель:** PRESTIGE

**Год постройки:** 2016

**Модель:** Мега-яхта

**Цена:** \$2,499,000 USD

**Местонахождение:** United States

**Длина общая:** 74' 1" (22.58mm)

**Ширина:** 17.91

**Крейс. скорость:** 24 Knots Kts. (28 MPH)

**Макс. скорость:** 28 Knots Kts. (32 MPH)

Купить 2016 Prestige Yachts 750 — PRESTIGE а также выбрать подходящую вам яхту из нашего каталога яхт вам поможет опытный яхтенный брокер Андрей Шестаков. На сегодняшний день компания Shestakov Yacht Sales Inc. имеет большое количество яхт в собственном списке продаж, а также тесно сотрудничает со всеми крупными яхтенными производителями по всему миру.

Для того чтобы купить яхту 2016 Prestige Yachts 750 — PRESTIGE а также проконсультироваться по любому вопросу связанному с покупкой, продажей, чартером яхт позвоните по телефону **+7(918)465-66-44**.

# ОГЛАВЛЕНИЕ

---

ОГЛАВЛЕНИЕ	2
ХАРАКТЕРИСТИКИ	3
Обзор	3
Основная информация	4
Размеры	4
Скорость, вместимость и масса	4
Корпус и палуба	4
Информация о двигателе	4
ФОТОГРАФИИ	5
КОНТАКТЫ	8
Контактная информация	8
Телефоны	8
Время работы	8
Адрес	8

# ХАРАКТЕРИСТИКИ

## Обзор

The interior layout affords privacy and ease of movement on board, as the galley and dining area are on the same level, with a slight step up to the salon. Stretching fully across the cabin to a love seat on the starboard side, the main salon can easily accommodate eight guests, making it a perfect area for family and guests to relax and socialize. Forward of the helm is access to the beautiful, full-beam master stateroom. With plenty of space and ample storage, the owner's suite includes a lounge area to port, a desk to starboard, a large walk-in closet, and a head with a separate shower. Below deck are three guest staterooms, a VIP and two cabins with twin berths. A crew cabin with two berths is found in the stern of the boat. As you step aboard the teak covered deck, you notice the elegant and contemporary appeal the back cockpit has with retractable aft sunshade, mounted wood table and bench seating for multiple guests. As the semiautomatic stainless-steel saloon doors open you will find a sun-lit and spacious galley and salon accompanied by a stunning dining area only found on a yacht of this caliber. To your left, the galley provides all of the amenities needed for long luxurious travels. Framing the dining area is crafted dark wood storage compartments camouflaged as framing and small counter-space on top. A small step up from the galley and dining area, you are welcomed by a spacious and comfortable salon with 2 sofas and 2 lounge chairs able to seat a large group. Taking a small step up to the left, the Helm features leather bench seating and an array of non-glare Raymarine electronics. Moving down a few small steps, you are greeted by the stunning design and open-feel of the Owners Stateroom. With exceptional volume and plenty of room to walk around the room you will find a walk-in closet, desk, storage cabinets throughout and a master head prepared to accommodate 2 guests comfortably. Moving down the under-lit stairs you reach 3 staterooms and a forward head. The VIP guest stateroom located in the center of the vessel with large port windows lighting up the room, will wow your guests and is sometimes even chosen as the owner's suite, as both staterooms provide extreme elegance and space. The VIP's head compares to the size of the master head with generous storage and shower space. Across from the VIP stateroom is the 2 staterooms with twins in each, both rooms can easily be transformed into one larger bed with a middle insert. One berth has a connecting door to the forward head allowing for easy accessibility. The teak-lined walk-around bow gives the superyacht feel while leading you to a sunpad and bow seating area for those who like to enjoy the sun and the view. The flybridge overlooks the bow and the stunning atmosphere that your excursion provides. With an upper helm with a double bench and forward-facing settee, the entire family can enjoy the view from the captain's seat. A large mounted teak table and bench seating all around allows for large parties to have plenty of seating space. A spacious sunning area or room for tender lines the back of the flybridge. The crew quarters and engine room can be accessed from the swim platform through a water-tight transom door. Down a few steps, the entrance of the engine room with a combination washer/dryer to the left and the door to the crew cabin to the right. With adequate living space for sleeping and showering, the 750 provides a cabin to accommodate 2 crew members. The engine room is well laid out with adequate headroom and more than enough room to walk around the MAN engines. At the forward bulkhead, the twin generators and other

features such as Engine Oil Change System, Engine Driven Emergency Bilge Pump, Automatic Fire Fighting System, and a camera in engine room.

## Основная информация

---

**Тип судна:** Мега-яхта

**Подкатегория:** Мега-яхта

**Модельный год:** 2016

**Год постройки:** 2016

**Страна:** United States

## Размеры

---

**Длина общая:** 74' 1" (22.58mm)

**Ширина:** 17.91

## Скорость, вместимость и масса

---

**Крейс. скорость:** 24 Knots Kts. (28 MPH)

**Макс. скорость:** 28 Knots Kts. (32 MPH)

**Вместимость воды:** 222 Gallons

**Вместимость сточного бака:** 80 Gal  
Gallons

**Объем топливного бака:** 1168 Gal  
Gallons

## Корпус и палуба

---

**Материал корпуса:** Other

## Информация о двигателе

---

**Двигатели:** 2

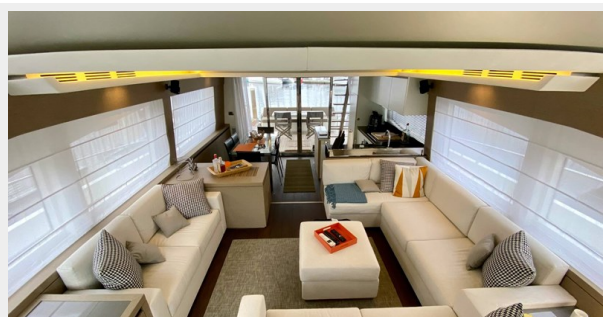
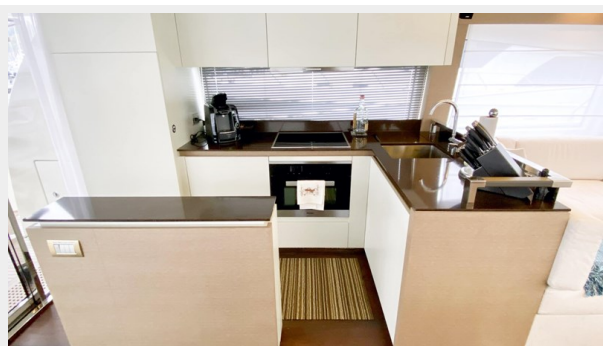
**Производитель:** MAN

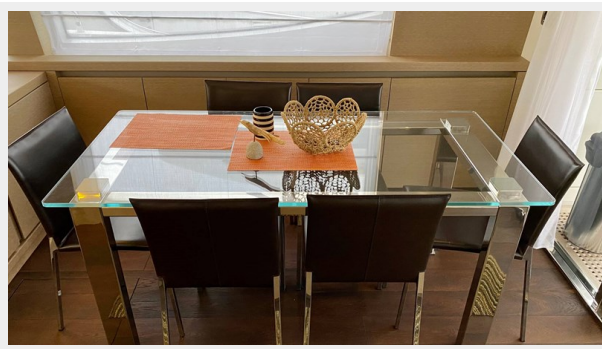
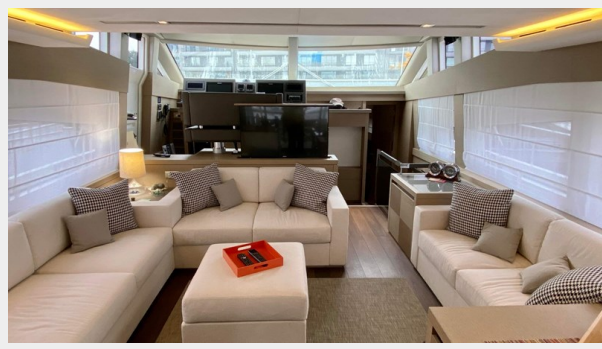
**Тип двигателя:** Inboard

**Тип топлива:** Diesel

# ФОТОГРАФИИ







# КОНТАКТЫ

---

Андрей Шестаков (Andrey Shestakov) – ведущий яхтенный брокер отдела продаж яхт и судов компании Shestakov Yacht Sales Inc. Официальный представитель Shestakov Yacht Sales Inc. для русскоговорящих клиентов в центральном офисе компании в Майами/Форт Лодердейл/Флорида/США.

## Контактная информация

---

Email: [andrey@shestakovyachtsales.com](mailto:andrey@shestakovyachtsales.com)

Web: [shestakovyachtsales.com](http://shestakovyachtsales.com)

## Телефоны

---

Краснодарский край: **+7(918)465-66-44**

США, Майами, Флорида: **+1(954)274-4435**

## Время работы

---

Понедельник – Суббота: **9:00 - 21:00**  
EDT

Воскресенье: **Закрыто**

## Адрес

---



Harbour Towne Marina, 850 NE 3rd St,  
STE 213, Dania, FL 33004