

## RED LEAF — J BOATS



**Builder:** J BOATS

**Year Built:** 2001

**Model:** Cruising or Racing Sailboat

**Price:** \$160,000 USD

**Location:** United States

**LOA:** 40' (12.19mm)

**Beam:** 12

**Min Draft:** 7' (2.13mm)

**Max Draft:** 7' (2.13mm)

**Cruise Speed:** 7 Knots Kts. (8 MPH)

Our experienced yacht broker, Andrey Shestakov, will help you choose and buy a yacht that best suits your needs **Red Leaf — J BOATS** from our catalogue. Presently, at Shestakov Yacht Sales Inc., we have a wide variety of yachts available on our sale's list. We also work in close contact with all the big yacht manufacturers from all over the world.

If you would like to buy a yacht **Red Leaf — J BOATS** or would like help answering any questions concerning purchasing, selling or chartering a yacht, please call **+1(954)274-4435**

# TABLE OF CONTENTS

TABLE OF CONTENTS	2
SPECIFICATIONS	5
Overview	5
Basic Information	5
Dimensions	5
Speed, Capacities and Weight	5
Accommodations	6
Hull and Deck Information	6
Engine Information	6
PHOTOS	7
anchored-ils-des-saints	7
antigua-yc-with-awning	7
at dock in shelburne	7
beating with #3	7
docked_at_BEYC	8
IMG_7917	8
IMG_7918	8
IMG_7919	8
IMG_7920	8
IMG_7921	8
IMG_7922	9
IMG_7925	9
IMG_7926	9
IMG_7928	9
IMG_7929	9
IMG_7930	9
IMG_7931	10
IMG_7932	10

IMG_7934	10
IMG_7937	10
IMG_7940	10
IMG_7942	10
IMG_7947	11
IMG_7946	11
IMG_7948	11
IMG_7949	11
IMG_7951	12
IMG_7952	12
IMG_7953	12
IMG_7956	12
IMG_7959	12
IMG_7962	12
IMG_7964	13
IMG_7967	13
IMG_7968	13
IMG_7969	13
IMG_7970	13
IMG_7971	13
IMG_7973	14
IMG_7974	14
IMG_7975	14
IMG_7976	14
IMG_7977	14
IMG_7978	14
IMG_7983	15
IMG_7979	15
IMG_7985	15

---

IMG_7984	15
IMG_7986	16
IMG_7987	16
IMG_7988	16
IMG_7989	16
IMG_7990	16
IMG_7994	16
moored-dominica	17
moored-ils-de-saints	17
moored-under-volcano	17
under-awning	17
CONTACTS	18
Contact details	18
Telephones	18
Office hours	18
Address	18

# SPECIFICATIONS

## Overview

The current owners are the third owners – all of whom cared greatly for the boat and she has been continuously upgraded over her lifetime. She has been in fresh water until current owners moved her to Rhode Island in November 2022 for a winter sail in the Caribbean. She remains a delightful vessel to sail – responsive, fast and easily maintained.

Comments from the owners: Red Leaf was a 4 year project from the outset – culminating in a winter sail to the Caribbean. She was bought with the intention of racing as a family and with other couples and friends on Lake Champlain for the first several years. This amazing sailing vessel was a wonderful platform for my wife and I to truly learn to sail and for us to spend wonderful time with our college age son and his friends and to develop a crew of friends interested in offshore sailing. Red Leaf succeeded beautifully as both a racer and a cruising platform. We joyfully doublehanded Red Leaf through the Caribbean with our marriage stronger and ready for larger vessel to take us further afield.

## Basic Information

Category: Cruising or Racing Sailboat	Model Year: 2001
Year Built: 2001	Country: United States

## Dimensions

LOA: 40' (12.19mm)	Beam: 12
Min Draft: 7' (2.13mm)	Max Draft: 7' (2.13mm)

## Speed, Capacities and Weight

Cruise Speed: 7 Knots Kts. (8 MPH)	Water Capacity: 50 Gallons
Holding Tank: 35 Gal Gallons	Fuel Capacity: 27 Gal Gallons

## Accommodations

---

**Total Cabins:** 2

**Total Berths:** 6

**Sleeps:** 6

**Total Heads:** 1

## Hull and Deck Information

---

**Hull Material:** Fiberglass

**Deck Material:** Fiberglass

**Hull Configuration:** Monohull

**Hull Designer:** Johnstone

**Interior Designer:** J Boats

## Engine Information

---

**Engines:** 1

**Manufacturer:** Yanmar

**Engine Type:** Inboard

**Fuel Type:** Diesel

# PHOTOS

**anchored-ils-des-saints**



**antigua-yc-with-awning**



**at dock in shelburne**



**beating with #3**





docked\_at\_BEYC



IMG\_7917



IMG\_7918



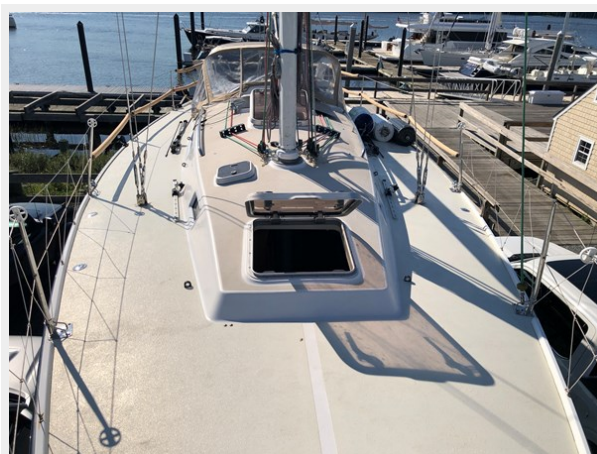
IMG\_7919



IMG\_7920

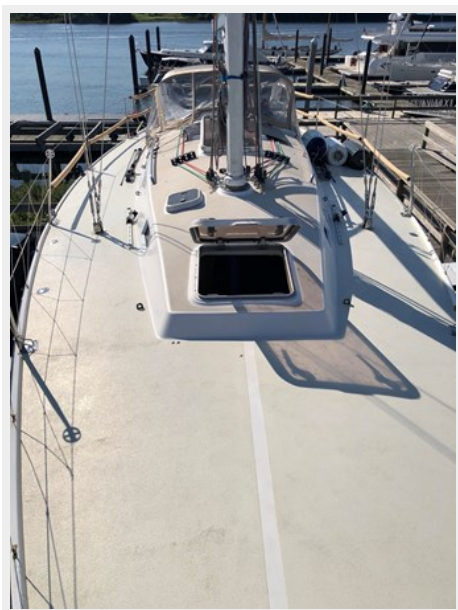


IMG\_7921





IMG\_7922



IMG\_7925



IMG\_7926



IMG\_7928



IMG\_7929



IMG\_7930





IMG\_7931



IMG\_7932



IMG\_7934



IMG\_7937



IMG\_7940



IMG\_7942



IMG\_7946



IMG\_7947



IMG\_7948



IMG\_7949





IMG\_7951



IMG\_7952



IMG\_7953



IMG\_7956



IMG\_7959



IMG\_7962





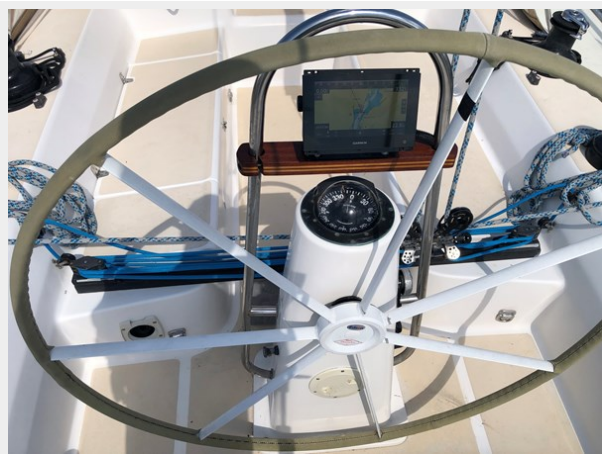
IMG\_7964



IMG\_7967



IMG\_7968



IMG\_7969



IMG\_7970



IMG\_7971





IMG\_7973



IMG\_7974



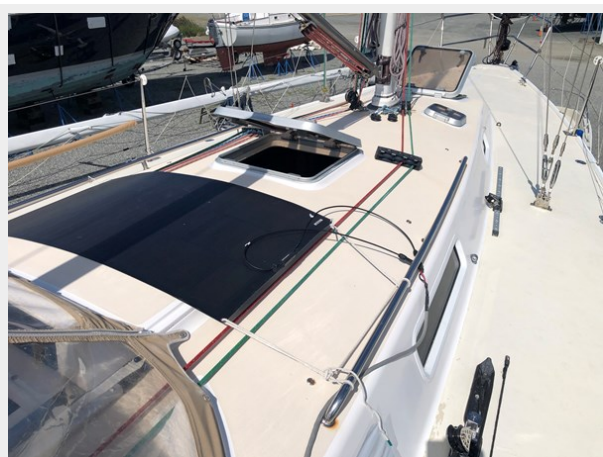
IMG\_7975



IMG\_7976



IMG\_7977



IMG\_7978



IMG\_7979



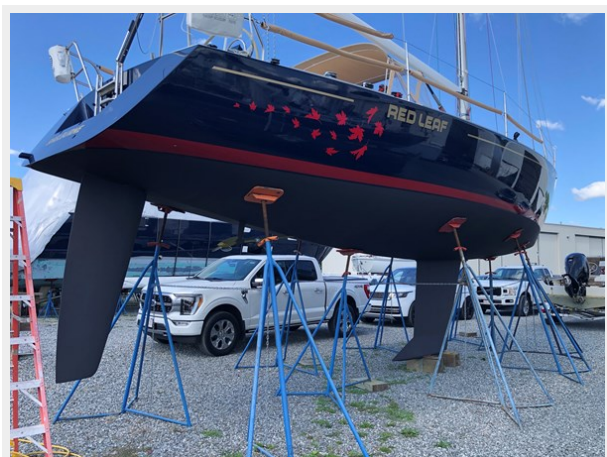
IMG\_7983



IMG\_7985



IMG\_7984





IMG\_7986



IMG\_7987



IMG\_7988



IMG\_7989



IMG\_7990



IMG\_7994



**moored-dominica**



**moored-ils-de-saints**



**moored-under-volcano**



**under-awning**



# CONTACTS

---

Andrey Shestakov, leading yacht broker of the sales department of Shestakov Yacht Sales Inc. Shestakov Yacht Sales Inc., the official representative of the Miami/Fort Lauderdale FL headquarters.

## Contact details

---

Email: **andrey@shestakovyachtsales.com**

Web: [shestakovyachtsales.com/en/](http://shestakovyachtsales.com/en/)

## Telephones

---

USA: **+1(954)274-4435**

## Office hours

---

Monday – Saturday: **9:00 - 21:00 EDT**

Sunday: **closed**

## Address

---



Harbour Towne Marina, 850 NE 3rd St,  
STE 213, Dania, FL 33004