

## COMPROMISE — SEA RAY



**Builder:** SEA RAY

**Year Built:** 2011

**Model:** cruiser

**Price:** \$229,500 CAD

**Location:** Canada

**LOA:** 33' 11" (10.34mm)

**Beam:** 11

**Min Draft:** 2' 10" (0.85mm)

**Max Draft:** 3' 10" (1.16mm)

**Cruise Speed:** 24 Knots Kts. (28 MPH)

Our experienced yacht broker, Andrey Shestakov, will help you choose and buy a yacht that best suits your needs **Compromise — SEA RAY** from our catalogue. Presently, at Shestakov Yacht Sales Inc., we have a wide variety of yachts available on our sale's list. We also work in close contact with all the big yacht manufacturers from all over the world.

If you would like to buy a yacht **Compromise — SEA RAY** or would like help answering any questions concerning purchasing, selling or chartering a yacht, please call **+1(954)274-4435**

---

# TABLE OF CONTENTS

---

TABLE OF CONTENTS	2
SPECIFICATIONS	4
Overview	4
Basic Information	4
Dimensions	4
Speed, Capacities and Weight	4
Accommodations	5
Hull and Deck Information	5
Engine Information	5
PHOTOS	6
330 pic 25	6
330 pic 24	6
330 pic 22	6
330 pic 21	7
330 pic 20	7
330 pic 19	7
330 pic 18	7
330 pic 17	8
330 pic 16	8
330 pic 14	8
330 pic 13	8
330 pic 12	9
330 pic 11	9
330 pic 10	9
330 pic 9	9
330 pic 8	10
330 pic 7	10
330 pic 6	10

---

330 pic 5	10
330 pic 4	11
330 pic 3	11
330 pic 2	11
330 pic1	11
CONTACTS	12
Contact details	12
Telephones	12
Office hours	12
Address	12

---

# SPECIFICATIONS

---

## Overview

---

This vessel is currently located in our heated indoor storage facility in Whitby. Compromise is the Pride of ownership that has been professionally maintained and been in fresh water her whole life.

This boat features joystick handling making even the inexperienced boater a confident captain. Outside of the joystick handling the 330 is built to run and handle big water in comfort.

If you would like further specs let us know

## Basic Information

---

**Category:** cruiser

**Sub Category:** Express

**Model Year:** 2011

**Year Built:** 2011

**Country:** Canada

## Dimensions

---

**LOA:** 33' 11" (10.34mm)

**Beam:** 11

**Min Draft:** 2' 10" (0.85mm)

**Max Draft:** 3' 10" (1.16mm)

## Speed, Capacities and Weight

---

**Cruise Speed:** 24 Knots Kts. (28 MPH)

**Gross Tonnage:** 15 Pounds

**Water Capacity:** 40 Gallons

**Holding Tank:** 28 Gal Gallons

**Fuel Capacity:** 200 Gal Gallons

---

## Accommodations

---

**Total Cabins:** 2

**Total Berths:** 4

**Sleeps:** 4

**Total Heads:** 1

---

## Hull and Deck Information

---

**Hull Material:** Fiberglass

**Deck Material:** Fiberglass

**Hull Configuration:** Monohull

**Hull Color:** Black

**Hull Designer:** Sea Ray

**Interior Designer:** Sea Ray

---

## Engine Information

---

**Engines:** 2

**Manufacturer:** Mercruiser

# PHOTOS

330 pic 25



330 pic 24



330 pic 22



330 pic 21



330 pic 20



330 pic 19



330 pic 18



330 pic 17



330 pic 16



330 pic 14



330 pic 13

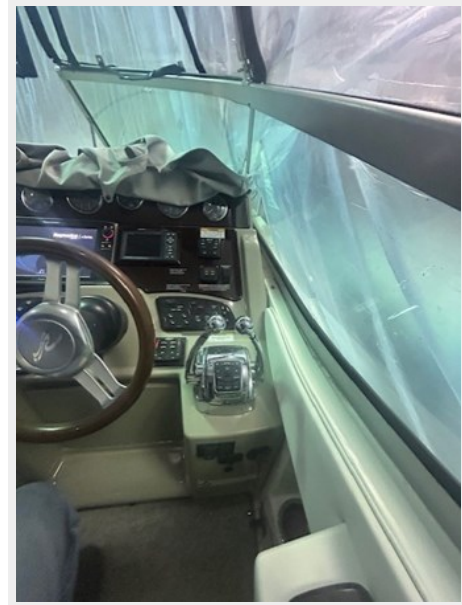




330 pic 12



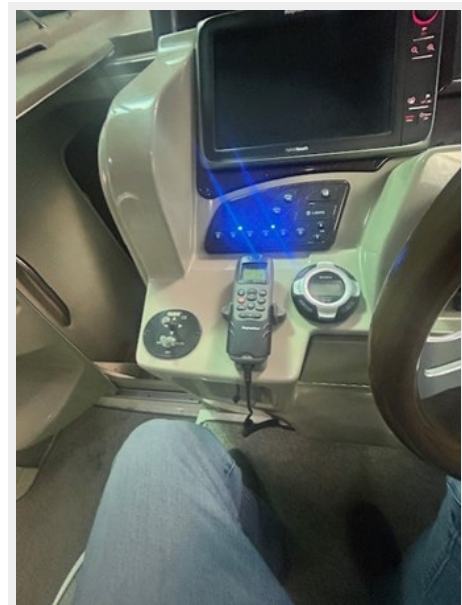
330 pic 11



330 pic 10



330 pic 9



330 pic 8



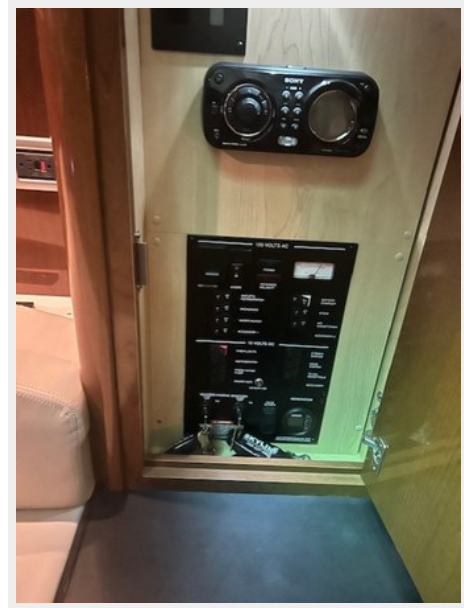
330 pic 7



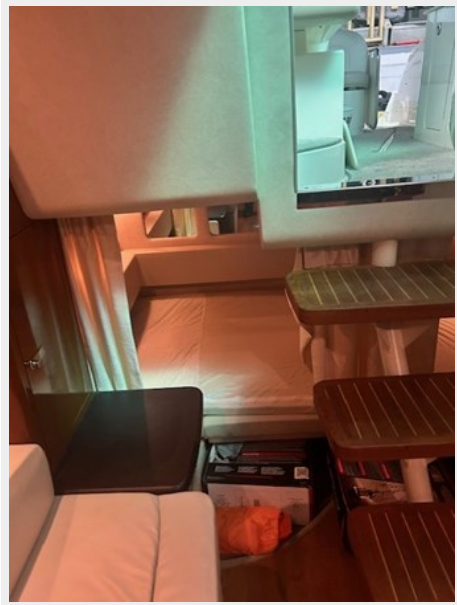
330 pic 6



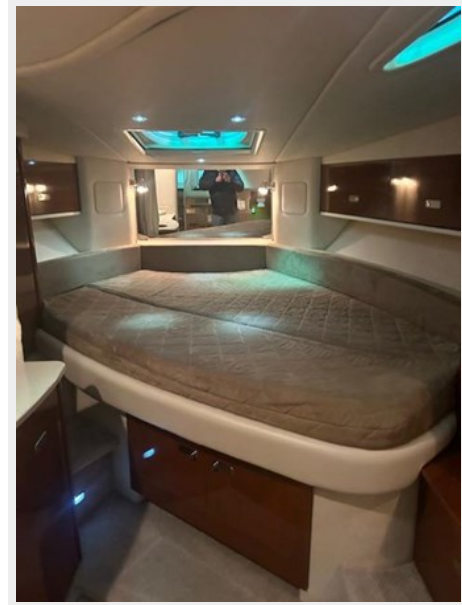
330 pic 5



330 pic 4



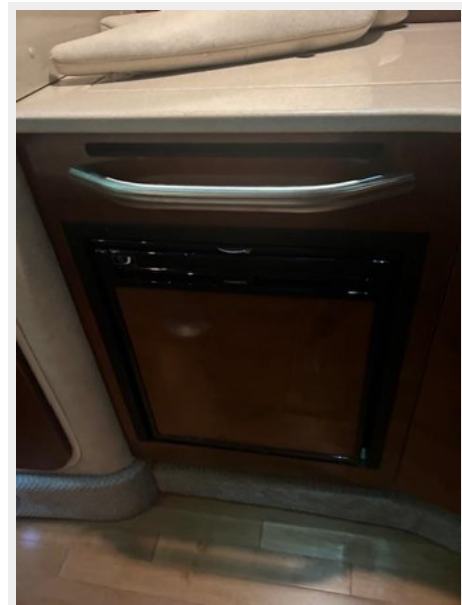
330 pic 3



330 pic 2



330 pic1



# CONTACTS

---

Andrey Shestakov, leading yacht broker of the sales department of Shestakov Yacht Sales Inc. Shestakov Yacht Sales Inc., the official representative of the Miami/Fort Lauderdale FL headquarters.

## Contact details

---

Email: [andrey@shestakovyachtsales.com](mailto:andrey@shestakovyachtsales.com)

Web: [shestakovyachtsales.com/en/](http://shestakovyachtsales.com/en/)

## Telephones

---

USA: +1(954)274-4435

## Office hours

---

Monday – Saturday: **9:00 - 21:00** EDT

Sunday: **closed**

## Address

---



Harbour Towne Marina, 850 NE 3rd St,  
STE 213, Dania, FL 33004