

WET DREAMS — JEANNEAU



Builder: JEANNEAU

Year Built: 2000

Model: Cruising or Racing Sailboat

Price: \$185,000 USD

Location: Spain

LOA: 48' 11" (14.9mm)

Beam: 14.76

Min Draft: 5' (1.5mm)

Max Draft: 7' 7" (2.3mm)

Cruise Speed: 7 Knots Kts. (8 MPH)

Max Speed: 9 Knots Kts. (10 MPH)

Our experienced yacht broker, Andrey Shestakov, will help you choose and buy a yacht that best suits your needs **Wet Dreams — JEANNEAU** from our catalogue. Presently, at Shestakov Yacht Sales Inc., we have a wide variety of yachts available on our sale's list. We also work in close contact with all the big yacht manufacturers from all over the world.

If you would like to buy a yacht **Wet Dreams — JEANNEAU** or would like help answering any questions concerning purchasing, selling or chartering a yacht, please call **+1(954)274-4435**

TABLE OF CONTENTS

| | |
|------------------------------|---|
| TABLE OF CONTENTS | 2 |
| SPECIFICATIONS | 3 |
| Overview | 3 |
| Basic Information | 3 |
| Dimensions | 3 |
| Speed, Capacities and Weight | 3 |
| Accommodations | 4 |
| Hull and Deck Information | 4 |
| Engine Information | 4 |
| PHOTOS | 5 |
| 1 | 6 |
| 20220122_123038000_iOS | 7 |
| CONTACTS | 8 |
| Contact details | 8 |
| Telephones | 8 |
| Office hours | 8 |
| Address | 8 |

SPECIFICATIONS

Overview

This 2000 Jeanneau 49 is hull 89, and she had a 1.5 meter transom extension, the extension aids in her overall performance, ascetics and access. Her mast and rigging were replaced 10 years ago, she received new electronics in 2021, she has 7 winches of which 5 are electric, she has a generator, AC/Heat, and electric stove and a microwave. She comes with two sets of sails, one 3DL the other are all Carbon. She has both symmetric and asymmetric spinnakers. All of the thru hulls were replaced with plastic thru hulls, her teak deck needs some work, but all in all she is ready for her next point to point race or used as a performance cruiser. She has three heads all electric.

Basic Information

Category: Cruising or Racing Sailboat **Model Year:** 2000

Year Built: 2000 **Country:** Spain

Dimensions

LOA: 48' 11" (14.9m)

Beam: 14.76

Min Draft: 5' (1.5m)

Max Draft: 7' 7" (2.3m)

Speed, Capacities and Weight

Cruise Speed: 7 Knots Kts. (8 MPH)

Cruise Speed Range: 220

Max Speed: 9 Knots Kts. (10 MPH)

Max Speed Range: 180 Kts.

Gross Tonnage: 13.44 Pounds

Water Capacity: 185 Gallons

Holding Tank: 50 Gal Gallons

Fuel Capacity: 220 Gal Gallons

Accommodations

Total Cabins: 3

Total Berths: 6

Sleeps: 6

Total Heads: 2

Hull and Deck Information

Hull Material: Fiberglass

Deck Material: Teak

Hull Configuration: Monohull

Hull Designer: Daniel Andrieu

Interior Designer: Jeanneau Design

Engine Information

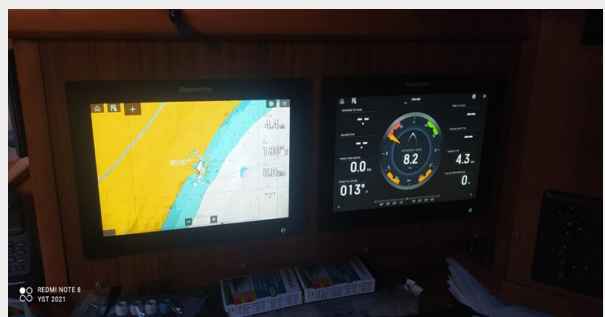
Engines: 1

Manufacturer: Yanmar

Engine Type: Inboard

Fuel Type: Diesel

PHOTOS





1



20220122_123038000_iOS



CONTACTS

Andrey Shestakov, leading yacht broker of the sales department of Shestakov Yacht Sales Inc. Shestakov Yacht Sales Inc., the official representative of the Miami/Fort Lauderdale FL headquarters.

Contact details

Email: andrey@shestakovyachtsales.com

Web: shestakovyachtsales.com/en/

Telephones

USA: +1(954)274-4435

Office hours

Monday – Saturday: **9:00 - 21:00** EDT

Sunday: **closed**

Address



Harbour Towne Marina, 850 NE 3rd St,
STE 213, Dania, FL 33004