

## MAHA (COPY) — HATTERAS



**Builder:** HATTERAS

**Year Built:** 2000

**Model:** Convertible

**Price:** \$1,499,000 USD

**Location:** N/A

**LOA:** 82' (24.99mm)

**Beam:** 21

**Max Draft:** 8' (2.44mm)

**Cruise Speed:** 18 Knots Kts. (21 MPH)

**Max Speed:** 22 Knots Kts. (25 MPH)

Our experienced yacht broker, Andrey Shestakov, will help you choose and buy a yacht that best suits your needs **MAHA (Copy) — HATTERAS** from our catalogue. Presently, at Shestakov Yacht Sales Inc., we have a wide variety of yachts available on our sale's list. We also work in close contact with all the big yacht manufacturers from all over the world.

If you would like to buy a yacht **MAHA (Copy) — HATTERAS** or would like help answering any questions concerning purchasing, selling or chartering a yacht, please call **+1(954)274-4435**

---

# TABLE OF CONTENTS

---

TABLE OF CONTENTS	2
SPECIFICATIONS	3
Overview	3
Basic Information	4
Dimensions	4
Speed, Capacities and Weight	4
Accommodations	4
Hull and Deck Information	4
Engine Information	4
PHOTOS	5
CONTACTS	12
Contact details	12
Telephones	12
Office hours	12
Address	12

---

# SPECIFICATIONS

---

## Overview

---

Rare 2000 82 Hatteras Enclosed Bridge Sport Fish.

MAHA has been maintained by the owners of the largest shipyard in Cayman. She has a full time US captain and is maintained with an open check book. MAHA was ordered new by the Crown Prince of Abu Dhabi with every imaginable option. Current owners are the second owners.

MAHA has had many upgrades beginning in 2013 which include;

- Re-powered with CAT C32 engines w/3000 hrs. ( 90% at low rpm)
- New Upholstery in and out.
- Painted top and bottom.
- New Generators
- All hatches re done in 2019
- NAIAD 302 Fin Stabilizers
- Aquamatic Sea Recovery 1400 GPD Watermaker(256hrs)
- New wall panels.
- New Ray-marine Electronics package in 2016( w/3kw transducer)
- New window caulking.
- New appliances.
- New electric door
- 5 Lumitec Flood lights
- Windows re-sealed 2020
- 1500lb davit.

14ft tender w/Honda 50 HP 2017

Owner is moving up to a larger Motor Yacht. Motivated and wants offers.

---

## Basic Information

---

**Category:** Convertible

**Sub Category:** Convertible

**Model Year:** 2000

**Year Built:** 2000

**Country:** N/A

---

## Dimensions

---

**LOA:** 82' (24.99mm)

**Beam:** 21

**Max Draft:** 8' (2.44mm)

---

## Speed, Capacities and Weight

---

**Cruise Speed:** 18 Knots Kts. (21 MPH)

**Max Speed:** 22 Knots Kts. (25 MPH)

**Water Capacity:** 840 Gallons

**Holding Tank:** 220 Gal Gallons

**Fuel Capacity:** 4210 Gal Gallons

---

## Accommodations

---

**Total Cabins:** 5

**Total Heads:** 6

---

## Hull and Deck Information

---

**Hull Material:** Fiberglass

---

## Engine Information

---

**Engines:** 2

**Manufacturer:** Caterpillar

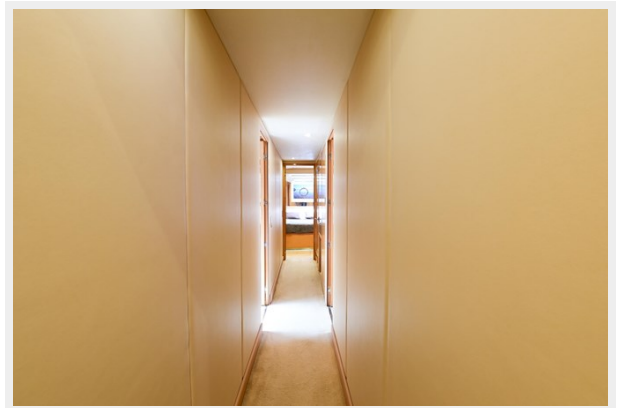
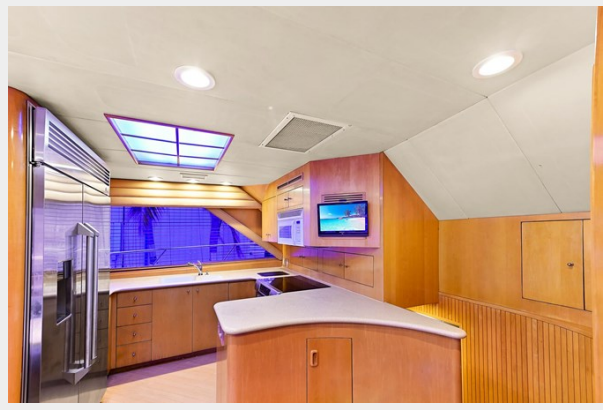
**Engine Type:** Inboard

**Fuel Type:** Diesel

# PHOTOS

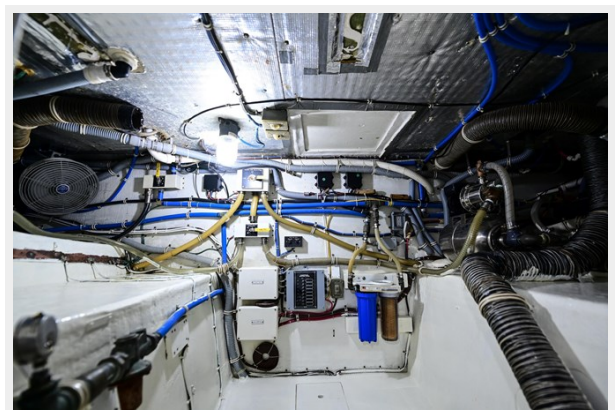
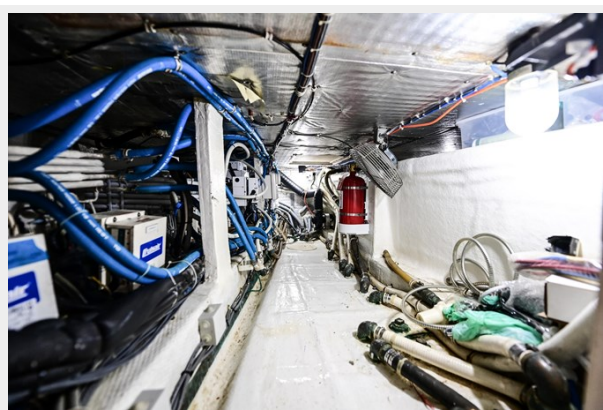


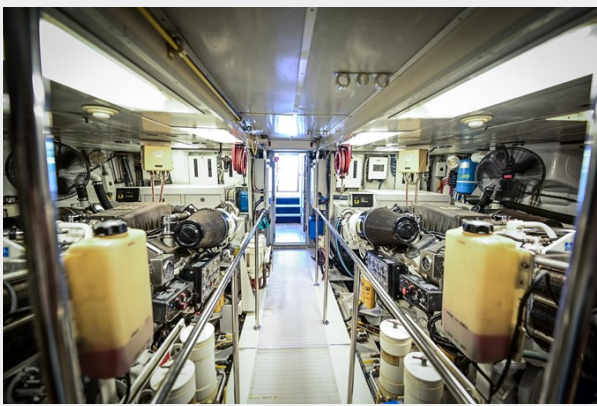
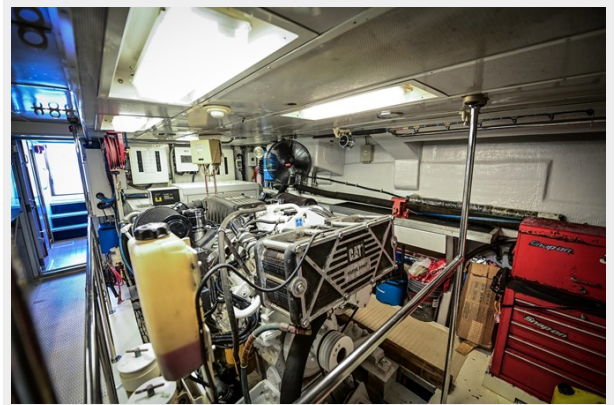














---

# CONTACTS

---

Andrey Shestakov, leading yacht broker of the sales department of Shestakov Yacht Sales Inc. Shestakov Yacht Sales Inc., the official representative of the Miami/Fort Lauderdale FL headquarters.

---

## Contact details

---

Email: [andrey@shestakovyachtsales.com](mailto:andrey@shestakovyachtsales.com)

Web: [shestakovyachtsales.com/en/](http://shestakovyachtsales.com/en/)

---

## Telephones

---

USA: +1(954)274-4435

---

## Office hours

---

Monday – Saturday: **9:00 - 21:00** EDT

Sunday: **closed**

---

## Address

---



Harbour Towne Marina, 850 NE 3rd St,  
STE 213, Dania, FL 33004