

AZUL V — CRN



Builder: CRN

Year Built: 1996

Model: Motor Yacht

Price: €8,900,000 EUR

Location: Thailand

LOA: 158' 2" (48.2mm)

Beam: 29.79

Max Draft: 9' 7" (2.9mm)

Cruise Speed: 15.5 Knots Kts. (18 MPH)

Max Speed: 17 Knots Kts. (20 MPH)

Our experienced yacht broker, Andrey Shestakov, will help you choose and buy a yacht that best suits your needs **Azul V — CRN** from our catalogue. Presently, at Shestakov Yacht Sales Inc., we have a wide variety of yachts available on our sale's list. We also work in close contact with all the big yacht manufacturers from all over the world.

If you would like to buy a yacht **Azul V — CRN** or would like help answering any questions concerning purchasing, selling or chartering a yacht, please call **+1(954)274-4435**

TABLE OF CONTENTS

| | |
|------------------------------|----|
| TABLE OF CONTENTS | 2 |
| SPECIFICATIONS | 4 |
| Overview | 4 |
| Basic Information | 5 |
| Dimensions | 5 |
| Speed, Capacities and Weight | 5 |
| Accommodations | 5 |
| Hull and Deck Information | 5 |
| Engine Information | 6 |
| PHOTOS | 7 |
| CRN Main | 7 |
| CRN in Navigation | 7 |
| CRN Sun deck | 7 |
| CRN Stern + Tender | 7 |
| CRN Top Deck | 7 |
| CRN Side View | 7 |
| CRN Tender Garage | 8 |
| CRN Jacuzzi | 8 |
| CRN | 8 |
| CRN Saloon | 8 |
| CRN Dining | 8 |
| CRN Dining T | 8 |
| CRN Cabin | 9 |
| CRN Stairs | 9 |
| CRN Corridor | 9 |
| CRN Office | 9 |
| CONTACTS | 10 |
| Contact details | 10 |

| | |
|--------------|----|
| Telephones | 10 |
| Office hours | 10 |
| Address | 10 |

SPECIFICATIONS

Overview

Currently located in the magnificent waters of Southeast Asia, Azul V stands as one of the largest and most luxurious yachts in the region.

VALUE: ASKING 8.9M€

Azul V represents the best value in our Superyacht collection, with an asking price of only 17.9K €/GT, significantly lower than the industry average of 33K €/GT.

BUDGET

The operational budget for Azul V is extraordinarily well-managed, making her the most cost-effective 50m Superyacht on the market.

CONNECTION TO MARITIME TRADITION

With stabilizers underway, Azul V is an incredibly stable and seaworthy Superyacht, capable of ocean crossings.

COMFORT AND LUXURY

At 50m with a gross tonnage of 497 GT, Azul V maximizes living areas. Her structured, organised space emphasises symmetry and order found in traditional design, creating a well-balanced and harmonious living environment.

ENTERTAINMENT AND HOSTING

Azul V features 6 staterooms, including a full-beam master suite on the main deck and an equally spacious full-beam VIP suite on the lower deck, ensuring comfort and privacy for her guests.

TIMELESS ELEGANCE AND PRESTIGE

Azul V continues the heritage of yachting with a classic, timeless interior. Rich woods, ornate furniture, and a formal atmosphere highlight her elegance and comfort, offering a sense of history. The balance of symmetry and order contributes to an overall sense of tranquility. Azul V provides a perfect blend of elegance, comfort, and functionality, offering a unique and luxurious experience that aligns with the lifestyle and aspirations of discerning yacht owners.

OPPORTUNITY

Whether for private use or charter, Azul V offers a unique opportunity.

Basic Information

| | |
|-----------------------|-------------------|
| Category: Motor Yacht | Model Year: 1996 |
| Year Built: 1996 | Refit Type: Total |
| Country: Thailand | |

Dimensions

| | |
|-----------------------|--------------------------|
| LOA: 158' 2" (48.2mm) | LWL: 138' 7" (42.22mm) |
| Beam: 29.79 | Max Draft: 9' 7" (2.9mm) |

Speed, Capacities and Weight

| | |
|--|-------------------------------------|
| Cruise Speed: 15.5 Knots Kts. (18 MPH) | Cruise Speed Range: 4700 |
| Max Speed: 17 Knots Kts. (20 MPH) | Gross Tonnage: 543 Pounds |
| Water Capacity: 33000 Gallons | Fuel Capacity: 31964.82 Gal Gallons |

Accommodations

| | |
|-----------------|------------|
| Total Cabins: 6 | Sleeps: 11 |
|-----------------|------------|

Hull and Deck Information

| | |
|--------------------------------|-------------------------------------|
| Hull Material: Steel | Deck Material: Teak |
| Exterior Designer: Paolo Scanu | Interior Designer: Francois Zuretti |

Engine Information

Engines: 2

Manufacturer: Deutz

Engine Type: Inboard

Fuel Type: Diesel

PHOTOS

CRN Main



CRN in Navigation



CRN Sun deck



CRN Stern + Tender



CRN Side View



CRN Top Deck



CRN Tender Garage**CRN Jakuzzi****CRN Saloon****CRN****CRN Dining****CRN Dining T**

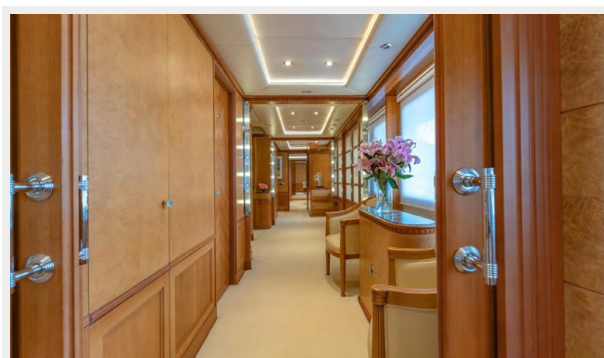
CRN Cabin



CRN Stairs



CRN Corridor



CRN Office



CONTACTS

Andrey Shestakov, leading yacht broker of the sales department of Shestakov Yacht Sales Inc. Shestakov Yacht Sales Inc., the official representative of the Miami/Fort Lauderdale FL headquarters.

Contact details

Email:
andrey@shestakovyachtsales.com

Web: shestakovyachtsales.com/en/

Telephones

USA: **+1(954)274-4435**

Office hours

Monday – Saturday: **9:00 - 21:00 EDT**

Sunday: **closed**

Address



Harbour Towne Marina, 850 NE 3rd St,
STE 213, Dania, FL 33004