

2017 SAFARI YACHT 142 CUSTOM — CUSTOM



Builder: CUSTOM

Year Built: 2017

Model: Mega Yacht

Price: \$4,500,000 USD

Location: Portugal

LOA: 142' 3" (43.36mm)

Beam: 28

Min Draft: 7' 3" (2.19mm)

Max Draft: 7' 3" (2.19mm)

Cruise Speed: 13 Knots Kts. (15 MPH)

Max Speed: 15 Knots Kts. (17 MPH)

Our experienced yacht broker, Andrey Shestakov, will help you choose and buy a yacht that best suits your needs 2017 Safari Yacht 142 Custom — CUSTOM from our catalogue. Presently, at Shestakov Yacht Sales Inc., we have a wide variety of yachts available on our sale's list. We also work in close contact with all the big yacht manufacturers from all over the world.

If you would like to buy a yacht 2017 Safari Yacht 142 Custom — CUSTOM or would like help answering any questions concerning purchasing, selling or chartering a yacht, please call **+1(954)274-4435**

TABLE OF CONTENTS

TABLE OF CONTENTS	2
SPECIFICATIONS	3
Overview	3
Basic Information	3
Dimensions	3
Speed, Capacities and Weight	3
Accommodations	4
Hull and Deck Information	4
Engine Information	4
PHOTOS	5
CONTACTS	11
Contact details	11
Telephones	11
Office hours	11
Address	11

SPECIFICATIONS

Overview

Presenting to you "SAFIRA" a Luxury Safari Yacht constructed in 2017. Measuring 142' (43.35m) with a solid steel hull this yacht accommodates 28 guests with 14 luxury cabins. Equipped with Twin Caterpillar C18 engines. Fuel capacity of 40,000 Litres for long-range expeditions.

Basic Information

Category: Mega Yacht

Sub Category: Mega Yacht

Model Year: 2017

Year Built: 2017

Country: Portugal

Dimensions

LOA: 142' 3" (43.36mm)

Beam: 28

Min Draft: 7' 3" (2.19mm)

Max Draft: 7' 3" (2.19mm)

Speed, Capacities and Weight

Cruise Speed: 13 Knots Kts. (15 MPH)

Cruise Speed Range: 1500

Max Speed: 15 Knots Kts. (17 MPH)

Max Speed Range: 1200 Kts.

Gross Tonnage: 499 Pounds

Water Capacity: 4000 Gallons

Holding Tank: 2000 Gal Gallons

Fuel Capacity: 20000 Gal Gallons

Accommodations

Total Cabins: 6

Total Berths: 12

Sleeps: 12

Total Heads: 7

Crew Cabin: 6

Crew Berths: 6

Crew Heads: 3

Hull and Deck Information

Hull Material: Steel

Deck Material: Teak

Hull Configuration: Monohull

Hull Designer: Uldas Yacht Design

Interior Designer: Destry Darr Designs

Engine Information

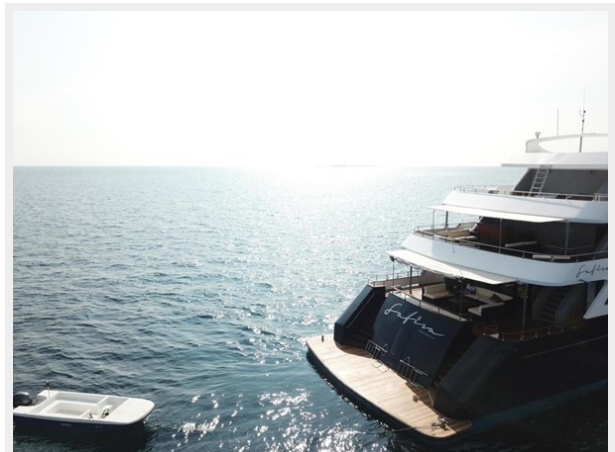
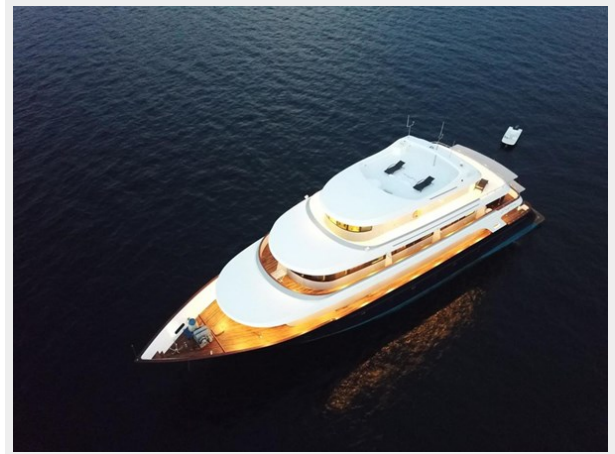
Engines: 2

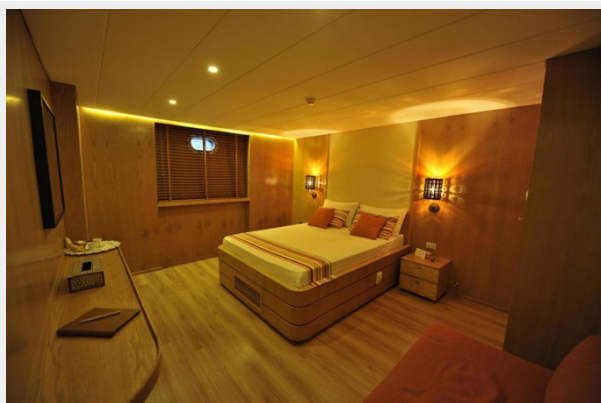
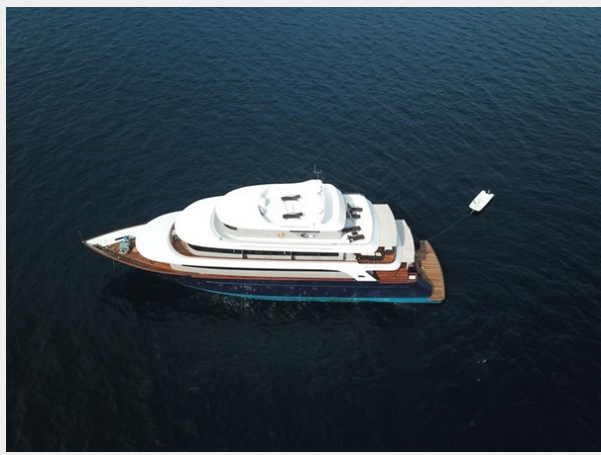
Manufacturer: Caterpillar

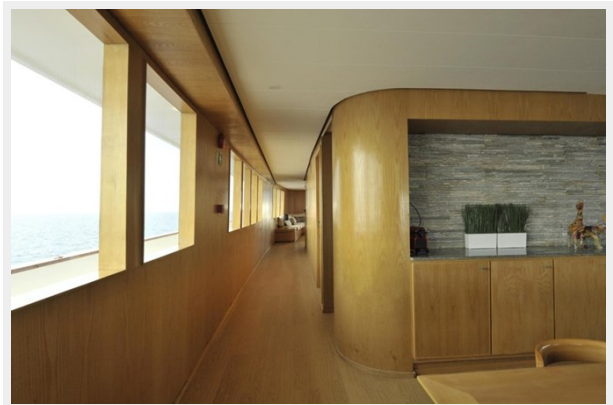
Engine Type: Inboard

Fuel Type: Diesel

PHOTOS













CONTACTS

Andrey Shestakov, leading yacht broker of the sales department of Shestakov Yacht Sales Inc. Shestakov Yacht Sales Inc., the official representative of the Miami/Fort Lauderdale FL headquarters.

Contact details

Email: andrey@shestakovyachtsales.com

Web: shestakovyachtsales.com/en/

Telephones

USA: +1(954)274-4435

Office hours

Monday – Saturday: **9:00 - 21:00** EDT

Sunday: **closed**

Address



Harbour Towne Marina, 850 NE 3rd St,
STE 213, Dania, FL 33004