

## LEXSEA — BENETTI



**Builder:** BENETTI

**LOA:** 135' (41.15m)

**Year Built:** 2022

**Beam:** 24

**Model:** Mega Yacht

**Price:** PRICE ON APPLICATION

**Location:** Marshall Islands

Our experienced yacht broker, Andrey Shestakov, will help you choose and buy a yacht that best suits your needs Lexsea — BENETTI from our catalogue. Presently, at Shestakov Yacht Sales Inc., we have a wide variety of yachts available on our sale's list. We also work in close contact with all the big yacht manufacturers from all over the world.

If you would like to buy a yacht Lexsea — BENETTI or would like help answering any questions concerning purchasing, selling or chartering a yacht, please call +1(954)274-4435

---

# TABLE OF CONTENTS

---

TABLE OF CONTENTS	2
SPECIFICATIONS	3
Overview	3
Basic Information	3
Dimensions	3
Speed, Capacities and Weight	4
Accommodations	4
Hull and Deck Information	4
Engine Information	4
PHOTOS	5
CONTACTS	9
Contact details	9
Telephones	9
Office hours	9
Address	9

---

# SPECIFICATIONS

---

## Overview

---

Constructed in Italy by BENETTI, LEXSEA is an impressive 40.8 m Motor Yacht that was delivered in 2022.

Being one of the 23 models from Oasis 40M series, she flaunts a top velocity of 17.0 kn, a cruising speed of 16.0 kn and holds the potential of a maximum cruising range of 4000.0 nm at 11.0 kn. This power is provided by dual MAN diesel engines. She ensures a comfortable stay for up to 10 guests across five staterooms, with a crew of 7 people catering to their demands. She features a gross tonnage of 385.0 GT and has an 8.5 m beam.

LEXSEA was brought to life by the design prowess of RWD, who has an impressive portfolio of designing 40 other superyachts as per the BOAT Pro database records. The naval architecture was a collaborative effort between Benetti (with 371 other superyachts architected) and Pierluigi Ausonio (who claims 97 other superyachts architected). The yacht's interior features an aesthetic touch by Bonetti / Kozerski architecture, having another 18 superyacht interiors in the BOAT Pro database. Crafted with a Teak deck, a GRP hull, and GRP superstructure, she embodies elegance and durability.

LEXSEA stands eloquent in the top 30% by LOA globally. She contributes to the 591 motor yachts within the 40-45 m size bracket, and her volume surpasses the average by a 2.81 GT margin when compared to similarly sized motor yachts. Presently, she sails under the banner of the Marshall Islands, the 5th preferred flag state for superyachts with a total pool of 411 yachts registered.

---

## Basic Information

---

**Category:** Mega Yacht

**Sub Category:** Mega Yacht

**Model Year:** 2022

**Year Built:** 2022

**Country:** Marshall Islands

---

## Dimensions

---

**LOA:** 135' (41.15mm)

**Beam:** 24

---

## Speed, Capacities and Weight

---

**Cruise Speed Range:** 4000

**Gross Tonnage:** 385 Pounds

---

## Accommodations

---

**Total Cabins:** 5

**Sleeps:** 10

**Crew Cabin:** 7

---

## Hull and Deck Information

---

**Hull Material:** Steel

---

## Engine Information

---

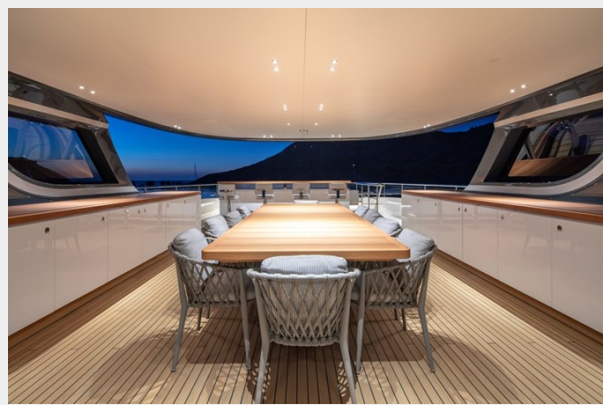
**Engines:** 2

**Manufacturer:** MAN

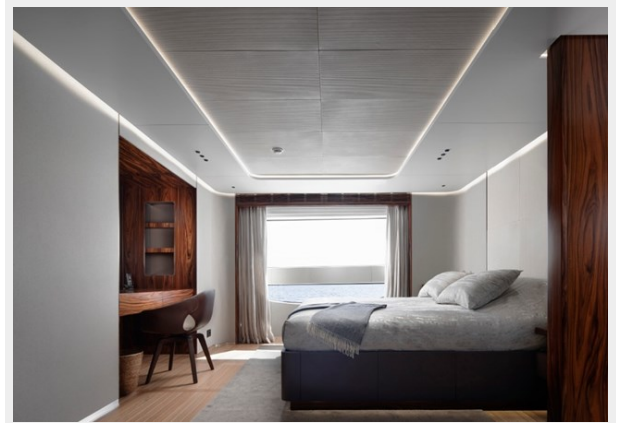
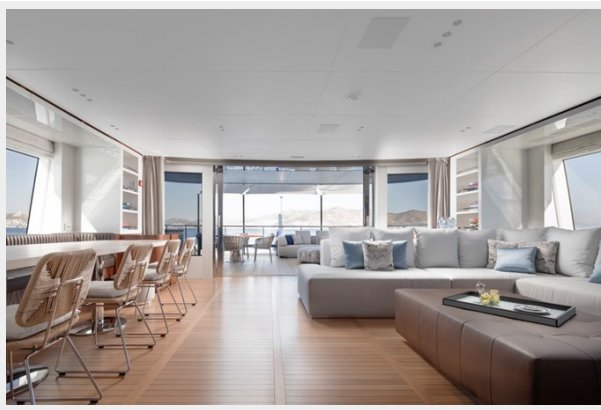
**Engine Type:** Inboard

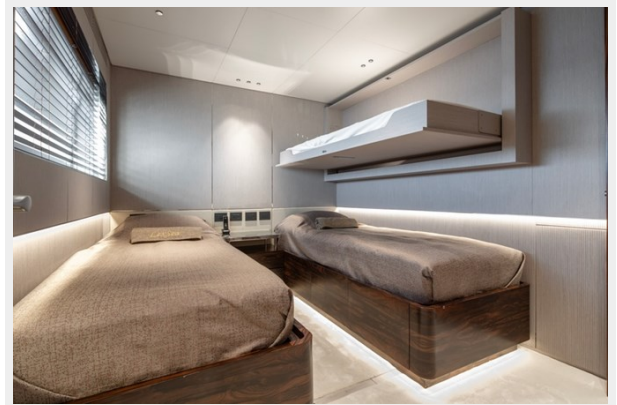
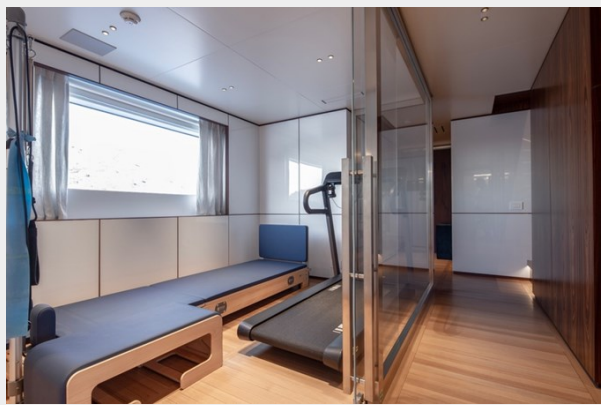
**Fuel Type:** Diesel

# PHOTOS













# CONTACTS

---

Andrey Shestakov, leading yacht broker of the sales department of Shestakov Yacht Sales Inc. Shestakov Yacht Sales Inc., the official representative of the Miami/Fort Lauderdale FL headquarters.

## Contact details

---

Email: [andrey@shestakovyachtsales.com](mailto:andrey@shestakovyachtsales.com)

Web: [shestakovyachtsales.com/en/](http://shestakovyachtsales.com/en/)

## Telephones

---

USA: +1(954)274-4435

## Office hours

---

Monday – Saturday: **9:00 - 21:00** EDT

Sunday: **closed**

## Address

---



Harbour Towne Marina, 850 NE 3rd St,  
STE 213, Dania, FL 33004