

NOE — GUY COUACH



Builder: GUY COUACH

Year Built: 2013

Model: high performance

Price: PRICE ON APPLICATION

Location: France

LOA: 93' 10" (28.6mm)

Beam: 21.32

Max Draft: 4' 4" (1.3mm)

Cruise Speed: 28 Knots Kts. (32 MPH)

Max Speed: 34 Knots Kts. (39 MPH)

Our experienced yacht broker, Andrey Shestakov, will help you choose and buy a yacht that best suits your needs **NOE — GUY COUACH** from our catalogue. Presently, at Shestakov Yacht Sales Inc., we have a wide variety of yachts available on our sale's list. We also work in close contact with all the big yacht manufacturers from all over the world.

If you would like to buy a yacht **NOE — GUY COUACH** or would like help answering any questions concerning purchasing, selling or chartering a yacht, please call **+1(954)274-4435**

TABLE OF CONTENTS

TABLE OF CONTENTS	2
SPECIFICATIONS	4
Overview	4
Basic Information	4
Dimensions	4
Speed, Capacities and Weight	4
Accommodations	4
Hull and Deck Information	5
Engine Information	5
PHOTOS	6
PROFILE	6
PROFILE 3	6
PROFILE	6
PROFILE 8	6
PROFILE 10	6
PROFILE 12	6
TENDER GARAGE	7
STERN AREA 3	7
TENDER GARAGE	7
BOW AREA	7
CORRIDOR	8
MAIN SALON	8
DOUBLE CABIN 2	8
BATHROOM 2	8
DOUBLE CABIN	9
BATHROOM	9
MASTER CABIN 111	9
MASTER CABIN 11	9

MASTER CABIN 1111	10
MASTER CABIN BATHROOM 3	10
MASTER CABIN BATHROOM	10
MASTER CABIN	10
GALLEY 2	11
GALLEY	11
CONTACTS	12
Contact details	12
Telephones	12
Office hours	12
Address	12

SPECIFICATIONS

Overview

GUY COUACH-2800 OPEN-2013-PLANNING HULL-LIGHT WEIGHT(CARBON FIBER SUPERSTRUCTURE)-STABILIZED WITH SEAKEEPER-4 CABINS LAYOUT-BUREAU VERITAS CLASSIFICATION

Basic Information

Category: high performance

Sub Category: High Performance

Model Year: 2013

Year Built: 2013

Country: France

Dimensions

LOA: 93' 10" (28.6mm)

Beam: 21.32

Max Draft: 4' 4" (1.3mm)

Speed, Capacities and Weight

Cruise Speed: 28 Knots Kts. (32 MPH)

Max Speed: 34 Knots Kts. (39 MPH)

Gross Tonnage: 68 Pounds

Water Capacity: 2000 Gallons

Fuel Capacity: 2245.46 Gal Gallons

Accommodations

Total Cabins: 4

Hull and Deck Information

Hull Material: Kevlar Composite

Engine Information

Engines: 2

Manufacturer: MTU

Engine Type: Inboard

Fuel Type: Diesel

PHOTOS

PROFILE



PROFILE 3



PROFILE



PROFILE 8



PROFILE 10



PROFILE 12



TENDER GARAGE



STERN AREA 3



TENDER GARAGE



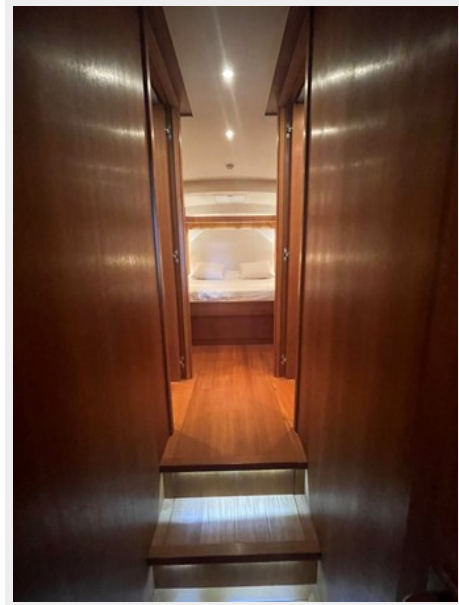
BOW AREA



MAIN SALON



CORRIDOR



DOUBLE CABIN 2



BATHROOM 2



DOUBLE CABIN

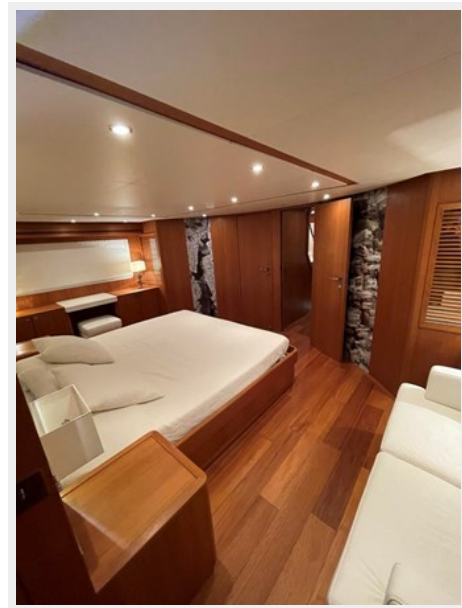
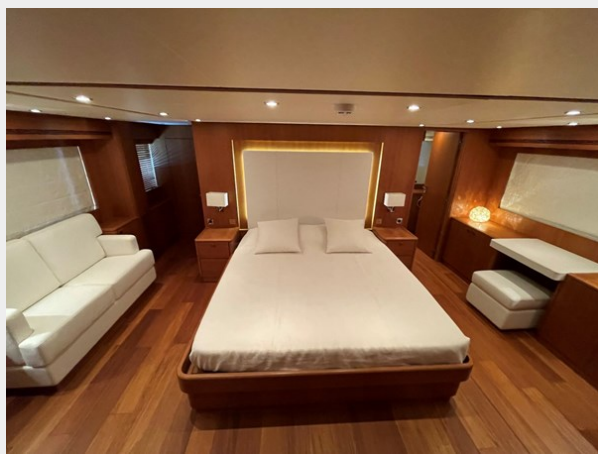


BATHROOM



MASTER CABIN 111

MASTER CABIN 11



MASTER CABIN 1111



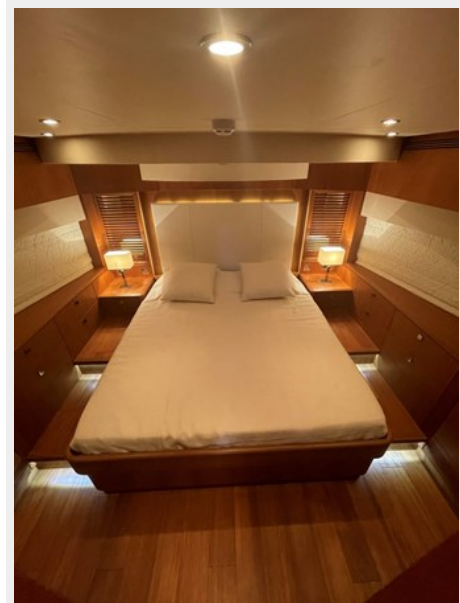
MASTER CABIN BATHROOM 3



MASTER CABIN BATHROOM



MASTER CABIN



GALLEY 2



GALLEY



CONTACTS

Andrey Shestakov, leading yacht broker of the sales department of Shestakov Yacht Sales Inc. Shestakov Yacht Sales Inc., the official representative of the Miami/Fort Lauderdale FL headquarters.

Contact details

Email: andrey@shestakovyachtsales.com

Web: shestakovyachtsales.com/en/

Telephones

USA: +1(954)274-4435

Office hours

Monday – Saturday: **9:00 - 21:00** EDT

Sunday: **closed**

Address



Harbour Towne Marina, 850 NE 3rd St,
STE 213, Dania, FL 33004