

OUR DREAM — CUSTOM



Builder: CUSTOM

Year Built: 1991

Model: trawler

Price: \$144,900 USD

Location: United States

LOA: 50' (15.24mm)

Beam: 17

Max Draft: 4' 10" (1.47mm)

Our experienced yacht broker, Andrey Shestakov, will help you choose and buy a yacht that best suits your needs **Our Dream — CUSTOM** from our catalogue. Presently, at Shestakov Yacht Sales Inc., we have a wide variety of yachts available on our sale's list. We also work in close contact with all the big yacht manufacturers from all over the world.

If you would like to buy a yacht **Our Dream — CUSTOM** or would like help answering any questions concerning purchasing, selling or chartering a yacht, please call **+1(954)274-4435**

TABLE OF CONTENTS

TABLE OF CONTENTS	2
SPECIFICATIONS	6
Overview	6
Basic Information	6
Dimensions	6
Speed, Capacities and Weight	6
Accommodations	6
Hull and Deck Information	6
Engine Information	7
PHOTOS	8
2	8
3	8
4	8
5	8
6	8
7	8
8	9
9	9
10	9
11	9
12	9
13	9
14	10
15	10
16	10
17	10
18	10
19	10

20	11
21	11
22	11
23	11
24	11
25	11
26	12
27	12
28	12
29	12
30	12
31	12
32	13
33	13
34	13
35	13
36	13
37	13
38	14
39	14
40	14
41	14
42	14
43	14
44	15
45	15
46	15
47	15
48	15

49	15
50	16
51	16
52	16
53	16
54	16
55	16
56	17
57	17
58	17
59	17
60	17
61	17
62	18
63	18
64	18
65	18
66	18
67	18
68	19
69	19
70	19
71	19
72	19
73	19
74	20
75	20
76	20
77	20

78	20
79	20
80	21
81	21
82	21
83	21
84	21
CONTACTS	22
Contact details	22
Telephones	22
Office hours	22
Address	22

SPECIFICATIONS

Overview

Very roomy Custom Trawler with over 1100 Square feet of living space. She has all the amenities you need to live aboard or go cruising.

Basic Information

Category: trawler

Sub Category: Aft Cabin

Model Year: 1991

Year Built: 1991

Country: United States

Dimensions

LOA: 50' (15.24mm)

Beam: 17

Max Draft: 4' 10" (1.47mm)

Speed, Capacities and Weight

Water Capacity: 150 Gallons

Holding Tank: 50 Gal Gallons

Fuel Capacity: 700 Gal Gallons

Accommodations

Total Cabins: 3

Total Heads: 3

Hull and Deck Information

Hull Material: Fiberglass

Engine Information

Engines: 2

Manufacturer: Perkins

Engine Type: Inboard

PHOTOS

2



3



4



5



6



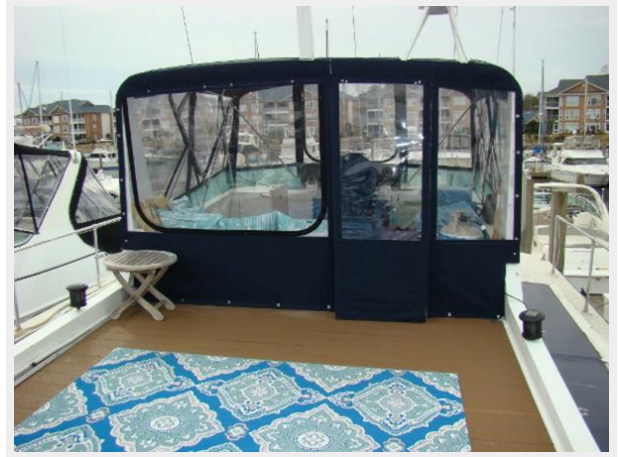
7



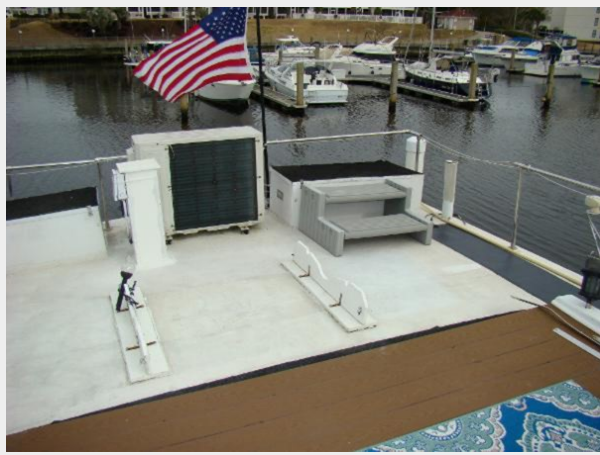
8



9



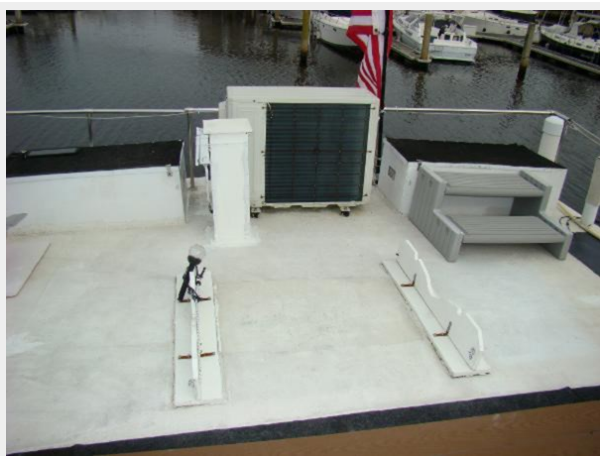
10



11



12



13



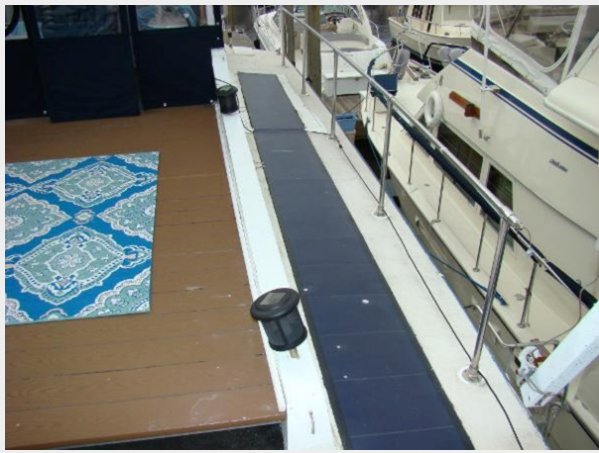
14



15



16



17



18



19



20



21



22



23



24



25



26



27



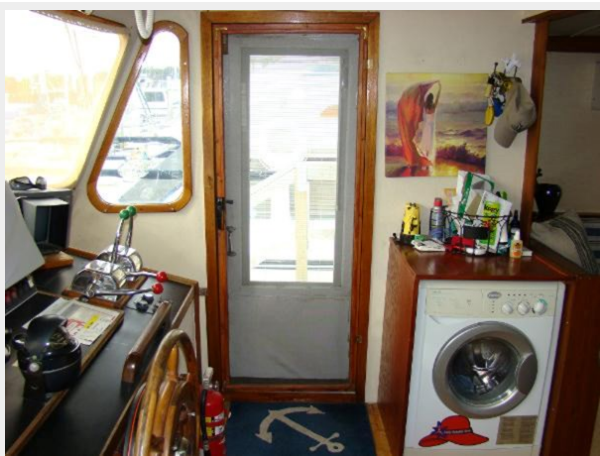
28



29



30



31



32



33



34



35



36



37



38



39



40



41



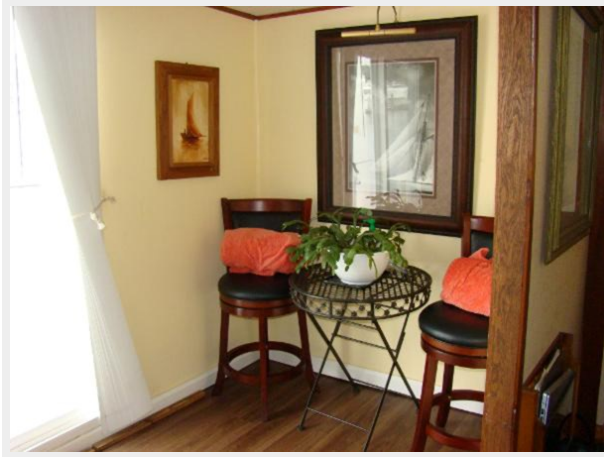
42



43



44



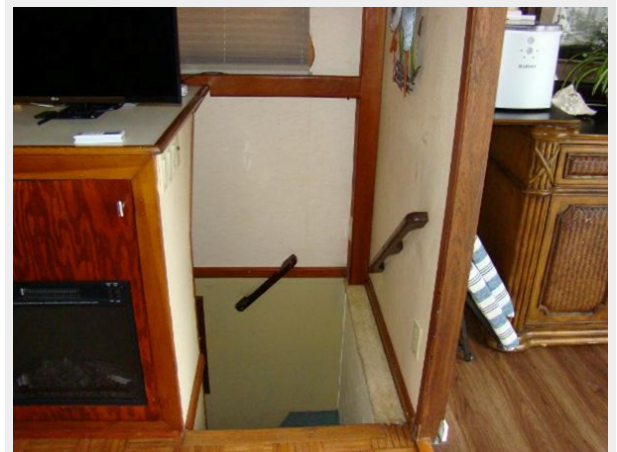
45



46



47



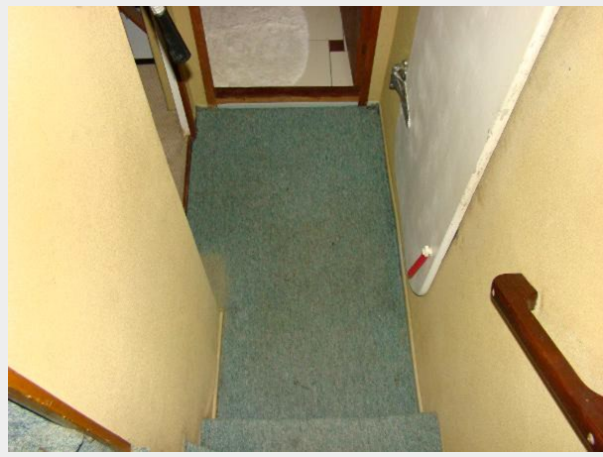
48



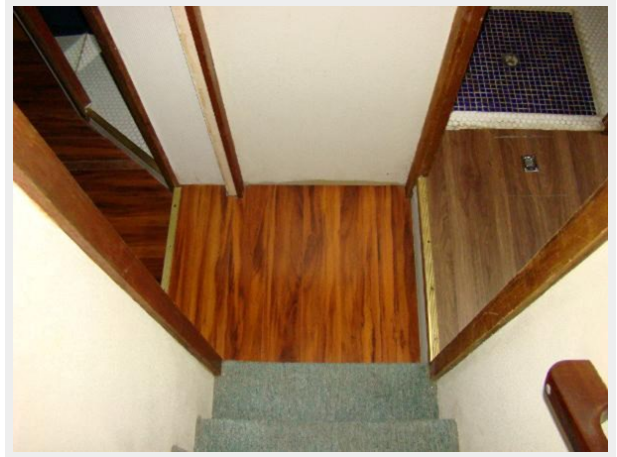
49



50



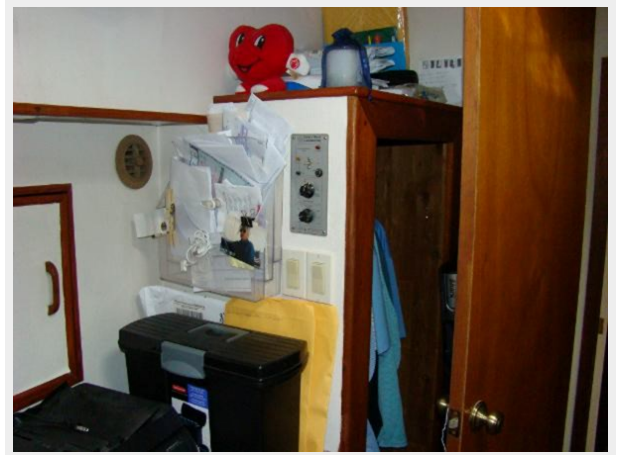
51



52



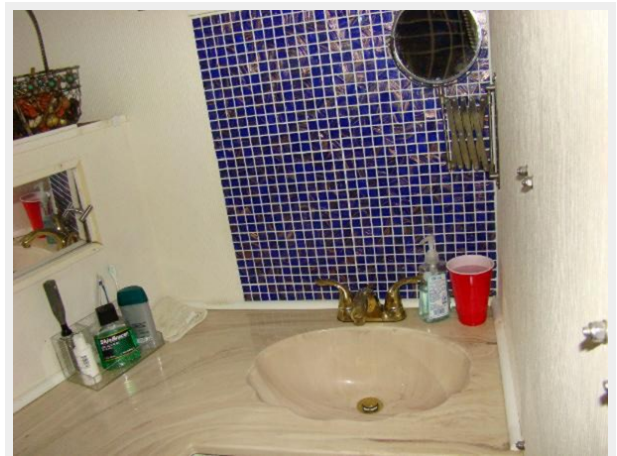
53



54



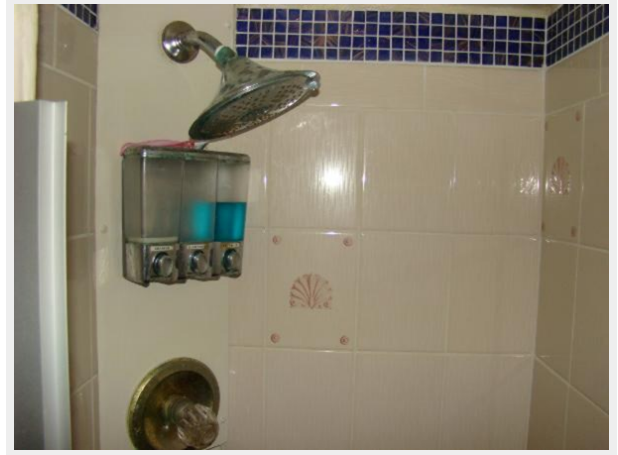
55



56



57



58



59



60



61



62



63



64



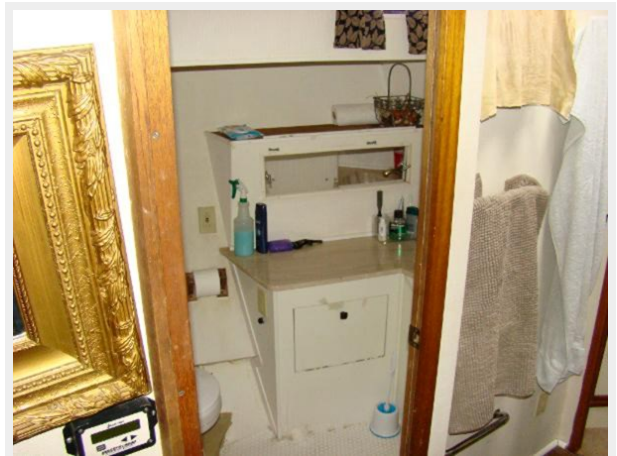
65



66



67



68



69



70



71



72



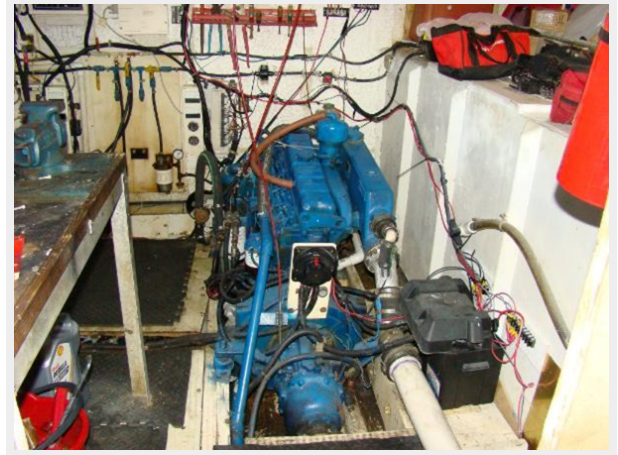
73



74



75



76



77



78



79



80



81



82



83



84



CONTACTS

Andrey Shestakov, leading yacht broker of the sales department of Shestakov Yacht Sales Inc. Shestakov Yacht Sales Inc., the official representative of the Miami/Fort Lauderdale FL headquarters.

Contact details

Email: andrey@shestakovyachtsales.com

Web: shestakovyachtsales.com/en/

Telephones

USA: +1(954)274-4435

Office hours

Monday – Saturday: **9:00 - 21:00** EDT

Sunday: **closed**

Address



Harbour Towne Marina, 850 NE 3rd St,
STE 213, Dania, FL 33004