

CHANGE ORDER — HATTERAS



Builder: HATTERAS

Year Built: 1990

Model: Convertible

Price: \$129,000 USD

Location: United States

LOA: 41' 9" (12.73mm)

Beam: 14.25

Min Draft: 4' 4" (1.32mm)

Our experienced yacht broker, Andrey Shestakov, will help you choose and buy a yacht that best suits your needs **CHANGE ORDER — HATTERAS** from our catalogue. Presently, at Shestakov Yacht Sales Inc., we have a wide variety of yachts available on our sale's list. We also work in close contact with all the big yacht manufacturers from all over the world.

If you would like to buy a yacht **CHANGE ORDER — HATTERAS** or would like help answering any questions concerning purchasing, selling or chartering a yacht, please call **+1(954)274-4435**

TABLE OF CONTENTS

TABLE OF CONTENTS	2
SPECIFICATIONS	5
Overview	5
Basic Information	5
Dimensions	5
Speed, Capacities and Weight	5
Accommodations	5
Hull and Deck Information	5
Engine Information	6
PHOTOS	7
Dockside bow view	7
Dockside 1	7
Cockpit Bulkhead	7
Cockpit from Salon Door	7
New Flybridge Enclosure	7
Helm	7
New NavNet 3D TZ-touch and VHF	8
Helm Chairs	8
Doppler Solid-State 25w Radar	8
Flybridge from the Bow	8
Waterside Profile	8
Salon	8
Galley Forward to Port	9
Hideaway Galley Sink	9
New Refrigerator	9
Salon, Starboard Side with Shades Down	9
Guest Stateroom Bunks, New Mattresses and Bedspreads	9
New Bound Edge Carpeting and New Sofas	9

Guest Stateroom Closet	10
Head, New Techma Freshwater MSD	10
Vanity, New Faucet	10
Shower, New Mixer Fixture	10
Master Stateroom Queen, New Mattress and Bedspread	10
Master Stateroom, Portside, One of Two Closets	10
Master Stateroom, View Aft	11
All New Holding Tank Plumbing	11
New Salon, A/C, Turbo Fan Blower	11
New Guest Stateroom A/C	11
Painted Window Frames	11
New Master Staterom A/C	11
Retractable Cockpit Shade	12
Dockside Profile 2	12
Cockpit	12
Tackle Center and Rigging Sink, New Faucet	12
Quick Connect Cockpit Washdown Outlet and Shore Water Inlet	12
Transom Door	12
Rebuilt Galley-Made Windlass, CQR Anchor -Rode	13
Foredeck	13
Layout Diagram	13
Engine Compartment	13
Port Motor	13
Starboard Motor	13
Updated Exhaust Hoses	14
Rebuilt Blower	14
New Cooling Hoses and Many Fuel Lines	14
New Racor Primary Fuel Filters	14
Rebuilt Freshwater Pump, New Accumulator Tank	14

Generator Racor	14
New Freshwater Lines, New Steering Lines	15
New Hot Water Heater	15
New Battery Charger, New Head Hoses	15
New A/C Pump and Plumbing	15
Generator Fully Serviced, Newer Power End and Stater	15
New Base Beneath Generator	15
Engines from Above	16
Hauled Out	16
Flybridge, Helm Canvas Cover	16
Aft View	16
Off the Dock	16
At Home Dock	16
CONTACTS	17
Contact details	17
Telephones	17
Office hours	17
Address	17

SPECIFICATIONS

Overview

Asking price has been improved from \$149,000 to \$129,000 on 1/28/24.

Basic Information

Category: Convertible

Sub Category: Convertible

Model Year: 1990

Year Built: 1990

Country: United States

Dimensions

LOA: 41' 9" (12.73mm)

Beam: 14.25

Min Draft: 4' 4" (1.32mm)

Speed, Capacities and Weight

Water Capacity: 50 Gallons

Holding Tank: 150 Gal Gallons

Fuel Capacity: 500 Gal Gallons

Accommodations

Total Cabins: 2

Total Berths: 3

Total Heads: 1

Hull and Deck Information

Hull Material: Fiberglass

Hull Configuration: Modified V-Hull

Engine Information

Engines: 2

Manufacturer: Detroit Diesel

Engine Type: Inboard

Fuel Type: Diesel

PHOTOS

Dockside bow view



Dockside 1



Cockpit Bulkhead



Cockpit from Salon Door



New Flybridge Enclosure



Helm



New NavNet 3D TZ-touch and VHF



Helm Chairs



Doppler Solid-State 25w Radar



Flybridge from the Bow



Waterside Profile



Salon



Galley Forward to Port



Hideaway Galley Sink



New Refrigerator



Salon, Starboard Side with Shades Down



New Bound Edge Carpeting and New Sofas



Guest Stateroom Bunks, New Mattresses and Bedspreads



Guest Stateroom Closet



Head, New Techma Freshwater MSD



Vanity, New Faucet



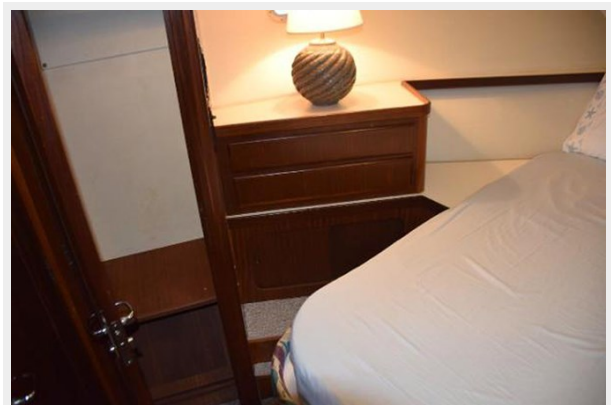
Shower, New Mixer Fixture



**Master Stateroom Queen, New Mattress and
Bedspread**



**Master Stateroom, Portside, One of Two
Closets**



Master Stateroom, View Aft



All New Holding Tank Plumbing



New Salon, A/C, Turbo Fan Blower



New Guest Stateroom A/C



Painted Window Frames



New Master Stateroom A/C



Retractable Cockpit Shade



Dockside Profile 2



Cockpit



Tackle Center and Rigging Sink, New Faucet



Quick Connect Cockpit Washdown Outlet and Shore Water Inlet



Transom Door



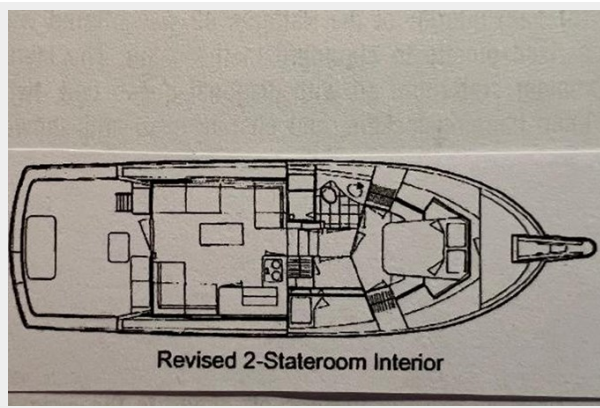
Foredeck



**Rebuilt Galley-Made Windlass, CQR Anchor
-Rode**



Layout Diagram



Engine Compartment



Port Motor



Starboard Motor



Updated Exhaust Hoses



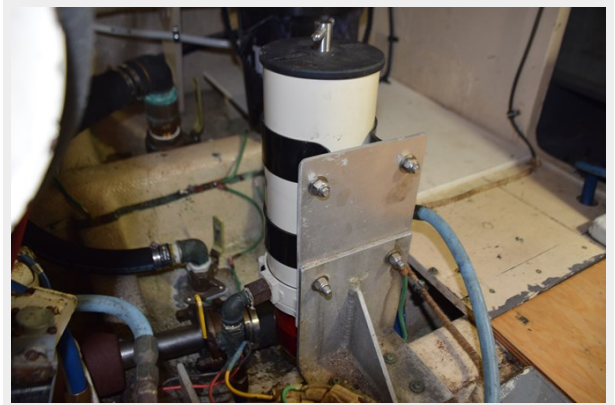
Rebuilt Blower



New Cooling Hoses and Many Fuel Lines



New Racor Primary Fuel Filters



Rebuilt Freshwater Pump, New Accumulator Tank



Generator Racor



New Freshwater Lines, New Steering Lines



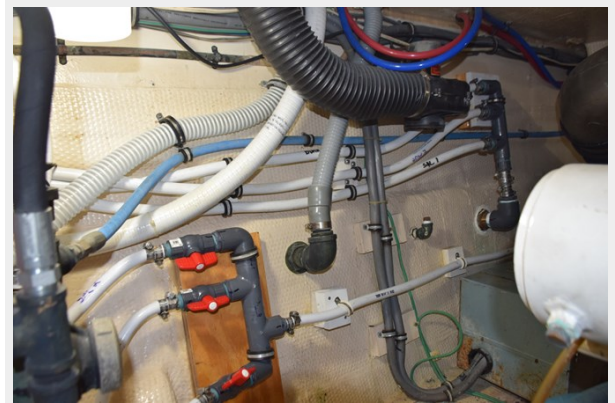
New Hot Water Heater



New Battery Charger, New Head Hoses



New A/C Pump and Plumbing



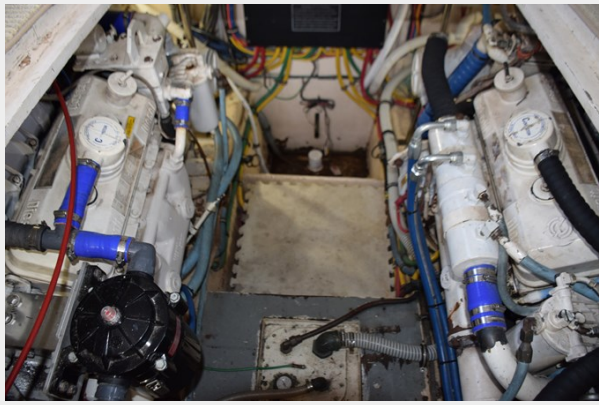
New Base Beneath Generator



Generator Fully Serviced, Newer Power End and Stator



Engines from Above



Hauled Out



Flybridge, Helm Canvas Cover



Aft View



At Home Dock



Off the Dock



CONTACTS

Andrey Shestakov, leading yacht broker of the sales department of Shestakov Yacht Sales Inc. Shestakov Yacht Sales Inc., the official representative of the Miami/Fort Lauderdale FL headquarters.

Contact details

Email: andrey@shestakovyachtsales.com

Web: shestakovyachtsales.com/en/

Telephones

USA: +1(954)274-4435

Office hours

Monday – Saturday: **9:00 - 21:00** EDT

Sunday: **closed**

Address



Harbour Towne Marina, 850 NE 3rd St,
STE 213, Dania, FL 33004