

## CINDERELLA — PRINCESS YACHTS



**Builder:** PRINCESS YACHTS

**Year Built:** 2017

**Model:** Motor Yacht

**Price:** \$2,100,000 USD

**Location:** United States

**LOA:** 66' 10" (20.37mm)

**Beam:** 16

**Min Draft:** 4' 10" (1.47mm)

**Max Draft:** 5' (1.52mm)

**Cruise Speed:** 30 Knots Kts. (35 MPH)

**Max Speed:** 34 Knots Kts. (39 MPH)

Our experienced yacht broker, Andrey Shestakov, will help you choose and buy a yacht that best suits your needs **Cinderella — PRINCESS YACHTS** from our catalogue. Presently, at Shestakov Yacht Sales Inc., we have a wide variety of yachts available on our sale's list. We also work in close contact with all the big yacht manufacturers from all over the world.

If you would like to buy a yacht **Cinderella — PRINCESS YACHTS** or would like help answering any questions concerning purchasing, selling or chartering a yacht, please call **+1(954)274-4435**

# TABLE OF CONTENTS

TABLE OF CONTENTS	2
SPECIFICATIONS	5
Overview	5
Basic Information	5
Dimensions	5
Speed, Capacities and Weight	5
Accommodations	6
Hull and Deck Information	6
Engine Information	6
PHOTOS	7
2017 Princess S65	7
2017 Princess S65	7
2017 Princess S65	7
2017 Princess S65	7
Bow	7
Bow	7
Aft Deck	8
Cabin	8
Cabin	8
Cabin	8
Cabin	8
Cabin	8
Cabin	8
Cabin	9
Head	9
Head	9
Cabin	9
Head	9
Salon	9

---

Salon	10
Salon	10
Salon	10
Salon	10
Salon	10
Salon	10
Salon	11
Galley	11
Galley	11
Aft Deck	11
Aft Deck	11
Tender Garage	11
Stern Lounge Pads	12
Bow Lounge Pads	12
Bow Lounge Pads	12
Bow Lounge Pads	12
Port	12
Starboard	12
Aft Deck	13
Aft Deck	13
Helm	13
Helm	13
Flybridge Seating	13
Aft Deck	13
Helm	14
Helm	14
Engine Room	14
Engine Room	14
Engine Room	14

---

---

CONTACTS	15
Contact details	15
Telephones	15
Office hours	15
Address	15

---

# SPECIFICATIONS

---

## Overview

---

New To Market - 2017 S65 Princess. Captain and stew maintained, this boat has been lightly used by an experienced yacht owner. Powered by MAN V12 1400 Engines, she cruises at a comfortable 32 Knots with top end speeds of 38 knots. Below are some of the key Features on Cinderella:

- Williams Jet Tender
- Watermaker 900GPD
- Lumishore 802 Color change lights
- SAT TV w 4 receivers
- 1250Hours
- Yacht Controller
- Starlink

## Basic Information

---

**Category:** Motor Yacht

**Model Year:** 2017

**Year Built:** 2017

**Country:** United States

## Dimensions

---

**LOA:** 66' 10" (20.37mm)

**Beam:** 16

**Min Draft:** 4' 10" (1.47mm)

**Max Draft:** 5' (1.52mm)

## Speed, Capacities and Weight

---

**Cruise Speed:** 30 Knots Kts. (35 MPH)

**Cruise Speed Range:** 325

**Max Speed:** 34 Knots Kts. (39 MPH)

**Max Speed Range:** 275 Kts.

**Water Capacity:** 300 Gallons

**Holding Tank:** 80 Gal Gallons

**Fuel Capacity:** 1033 Gal Gallons

---

## Accommodations

---

**Total Cabins:** 4

**Total Berths:** 6

**Sleeps:** 6

**Total Heads:** 3

**Crew Cabin:** 2

**Crew Berths:** 2

**Crew Heads:** 1

---

## Hull and Deck Information

---

**Hull Material:** Fiberglass

**Deck Material:** Teak

**Hull Configuration:** Deep Vee

**Hull Designer:** Bernard Olesinski

**Interior Designer:** Princess Yachts

---

## Engine Information

---

**Engines:** 2

**Manufacturer:** MAN

**Engine Type:** Inboard

**Fuel Type:** Diesel

# PHOTOS

**2017 Princess S65**



**2017 Princess S65**



**2017 Princess S65**



**2017 Princess S65**



**Bow**



**Bow**



**Aft Deck**



**Cabin**



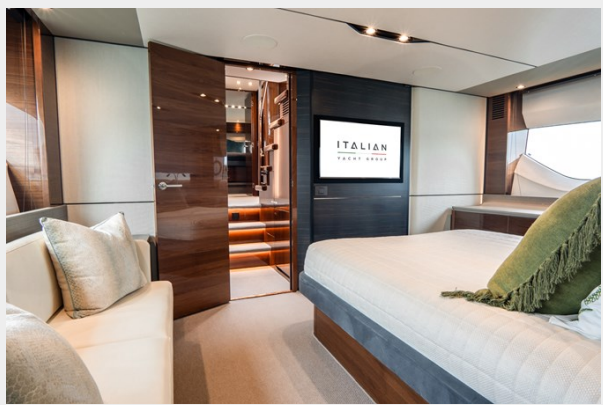
**Cabin**



**Cabin**



**Cabin**



**Cabin**





**Cabin**



**Head**



**Head**



**Cabin**



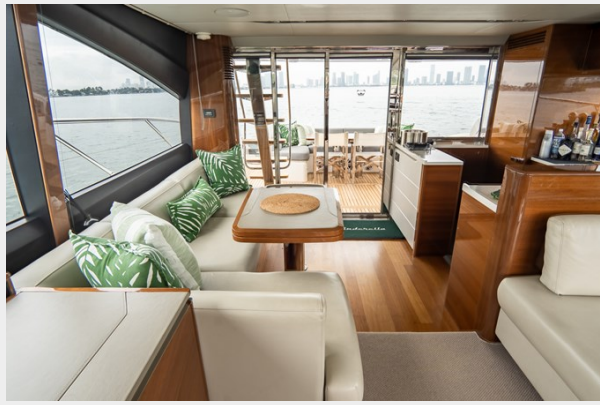
**Head**



**Salon**



Salon



Salon



Salon



Salon



Salon



Salon



Salon



Galley



Galley



Aft Deck



Aft Deck



Tender Garage



**Stern Lounge Pads**



**Bow Lounge Pads**



**Bow Lounge Pads**



**Bow Lounge Pads**



**Port**



**Starboard**



**Aft Deck**



**Aft Deck**



**Helm**



**Helm**



**Flybridge Seating**



**Aft Deck**



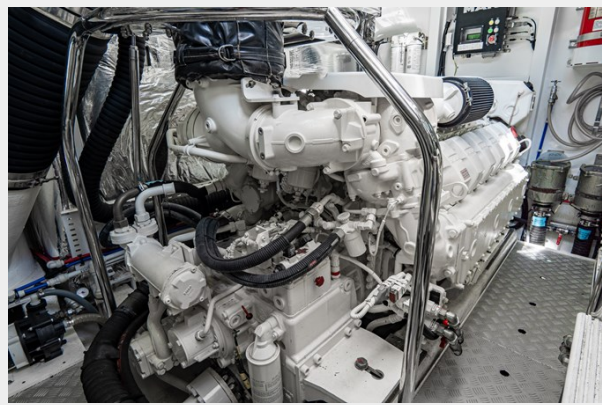
Helm



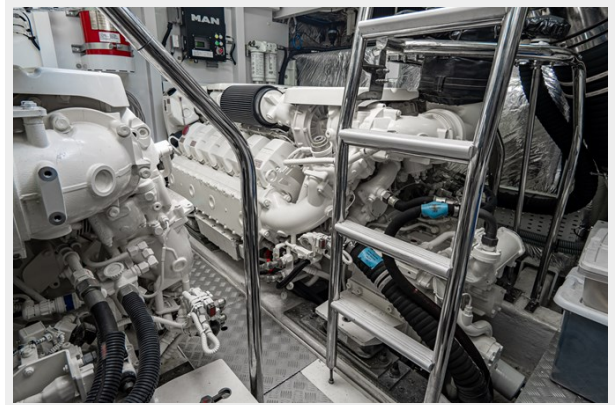
Helm



Engine Room



Engine Room



Engine Room



---

# CONTACTS

---

Andrey Shestakov, leading yacht broker of the sales department of Shestakov Yacht Sales Inc. Shestakov Yacht Sales Inc., the official representative of the Miami/Fort Lauderdale FL headquarters.

---

## Contact details

---

Email: [andrey@shestakovyachtsales.com](mailto:andrey@shestakovyachtsales.com)

Web: [shestakovyachtsales.com/en/](http://shestakovyachtsales.com/en/)

---

## Telephones

---

USA: +1(954)274-4435

---

## Office hours

---

Monday – Saturday: **9:00 - 21:00** EDT

Sunday: **closed**

---

## Address

---



Harbour Towne Marina, 850 NE 3rd St,  
STE 213, Dania, FL 33004