

MIDNIGHT LADY — NEPTUNUS



Builder: NEPTUNUS

Year Built: 2005

Model: Flybridge

Price: PRICE ON APPLICATION

Location: United States

LOA: 56' (17.07mm)

Beam: 16.16

Min Draft: 4' 9" (1.45mm)

Max Draft: 4' 11" (1.5mm)

Cruise Speed: 23 Knots Kts. (26 MPH)

Max Speed: 28 Knots Kts. (32 MPH)

Our experienced yacht broker, Andrey Shestakov, will help you choose and buy a yacht that best suits your needs **MIDNIGHT LADY — NEPTUNUS** from our catalogue. Presently, at Shestakov Yacht Sales Inc., we have a wide variety of yachts available on our sale's list. We also work in close contact with all the big yacht manufacturers from all over the world.

If you would like to buy a yacht **MIDNIGHT LADY — NEPTUNUS** or would like help answering any questions concerning purchasing, selling or chartering a yacht, please call **+1(954)274-4435**

TABLE OF CONTENTS

TABLE OF CONTENTS	2
SPECIFICATIONS	6
Overview	6
Basic Information	6
Dimensions	6
Speed, Capacities and Weight	6
Accommodations	6
Hull and Deck Information	7
Engine Information	7
PHOTOS	8
Salon Looking Fwd	8
Salon to Port	8
Salon to Stbd.	8
Galley Looking Forward	8
Galley Looking to Port	8
Concealed Microwave	8
Galley	9
Port Side Dinette	9
Helm and Helm Seat	9
Helm Detail	9
Helm to Stbd.	9
Electrical Panel	9
Companionway	10
Laundry	10
Master Looking Aft	10
Master Looking to Port	10
Master Looking to Stbd.	10
Master Looking Forward	10

Master Locker	11
Maser Head	11
Master Shower	11
Stbd Side Guest Cabin	11
Guest Head	11
Forward VIP	11
VIP to Port	12
VIP Looking Aft	12
VIP to Starboard	12
Side Decks	12
Forward Deck	12
Bow Cushions in Storage	12
032 Lower Windshield	13
Bow Area	13
Windlass Detail	13
Aft Deck	13
Aft Deck Table	13
Aft Deck Stbd. Side	13
Easy Flybridge Stairs	14
Aft Deck Gate	14
Split Table for Engine Room Access	14
Hidden Stern Cleat	14
AB Tender	14
Hydraulic Platform	14
AB Tender	15
Flybridge Helm	15
Helm Detail Port	15
Helm Detail Stbd.	15
Twin Helm Seats	15

Bridge Aft to Stbd.	15
Flybridge Looking Aft	16
Flybridge Looking Forward	16
Table Open	16
Flybridge to Port	16
Fridge-Ice Maker	16
Flybridge Grill	16
Seating Forward of Helm	17
Storage Covers	17
Storage Covers	17
Hard Top Equipment	17
Engine Room-Lazarette Entrance	17
Lazarette to Stbd.	17
Lazarette to Port	18
Engine Room Looking Fwd.	18
Stbd. Engine	18
Port Engine	18
Engine Room Forward	18
Newer Chillers	18
Generator	19
Clean Bilges	19
Stern Quarter Home Dock	19
Stern Quarter Home Dock	19
Bow	19
Profile	19
Logo	20
CONTACTS	21
Contact details	21
Telephones	21

Office hours	21
Address	21

SPECIFICATIONS

Overview

The most important feature of this boat is that virtually all of her systems are North American built, parts easily obtained and familiar to the American market.

Basic Information

Category: Flybridge

Sub Category: Flybridge

Model Year: 2006

Year Built: 2005

Country: United States

Dimensions

LOA: 56' (17.07mm)

Beam: 16.16

Min Draft: 4' 9" (1.45mm)

Max Draft: 4' 11" (1.5mm)

Speed, Capacities and Weight

Cruise Speed: 23 Knots Kts. (26 MPH)

Max Speed: 28 Knots Kts. (32 MPH)

Water Capacity: 180 Gallons

Holding Tank: 95 Gal Gallons

Fuel Capacity: 820 Gal Gallons

Accommodations

Total Cabins: 3

Sleeps: 6

Total Heads: 2

Hull and Deck Information

Hull Material: Fiberglass

Hull Configuration: Deep Vee

Hull Designer: Tony Castro

Engine Information

Engines: 2

Manufacturer: Caterpillar

Engine Type: Inboard

PHOTOS

Salon Looking Fwd



Salon to Port



Salon to Stbd.



Galley Looking Forward



Galley Looking to Port



Concealed Microwave



Galley



Port Side Dinette



Helm and Helm Seat



Helm Detail



Helm to Stbd.



Electrical Panel



Companionway



Laundry



Master Looking Aft



Master Looking to Port



Master Looking to Stbd.



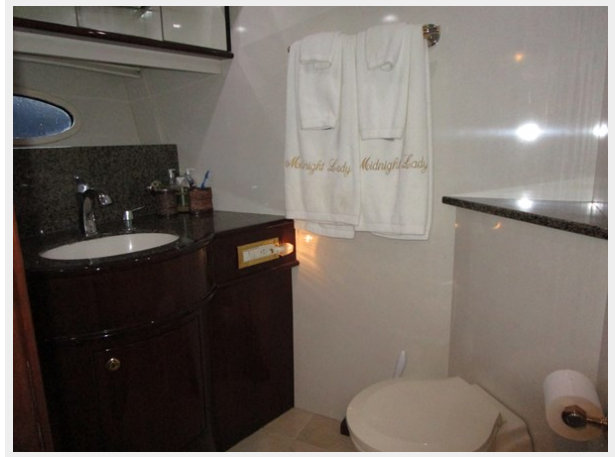
Master Looking Forward



Master Locker



Master Head



Master Shower



Stbd Side Guest Cabin



Guest Head



Forward VIP



VIP to Port



VIP Looking Aft



VIP to Starboard



Side Decks



Forward Deck



Bow Cushions in Storage



032 Lower Windshield



Bow Area



Windlass Detail



Aft Deck



Aft Deck Table



Aft Deck Stbd. Side



Easy Flybridge Stairs



Aft Deck Gate



Split Table for Engine Room Access



Hidden Stern Cleat



AB Tender



Hydraulic Platform



AB Tender



Flybridge Helm



Helm Detail Port



Helm Detail Stbd.



Twin Helm Seats



Bridge Aft to Stbd.



Flybridge Looking Aft



Flybridge Looking Forward



Table Open



Flybridge to Port



Fridge-Ice Maker



Flybridge Grill



Seating Forward of Helm



Storage Covers



Storage Covers



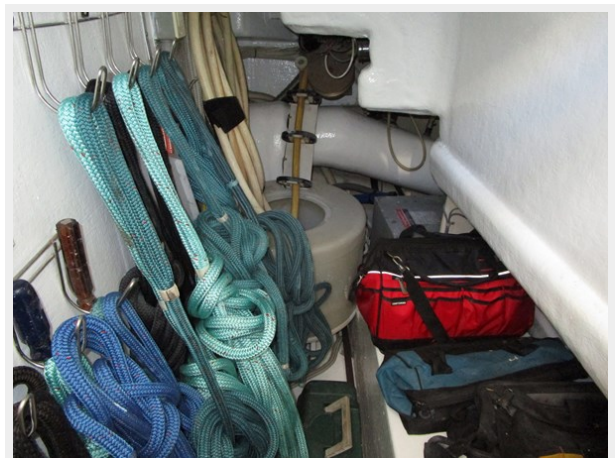
Hard Top Equipment



Engine Room-Lazarette Entrance



Lazarette to Stbd.



Lazarette to Port



Engine Room Looking Fwd.



Stbd. Engine



Port Engine



Engine Room Forward



Newer Chillers



Generator



Clean Bilges



Stern Quarter Home Dock



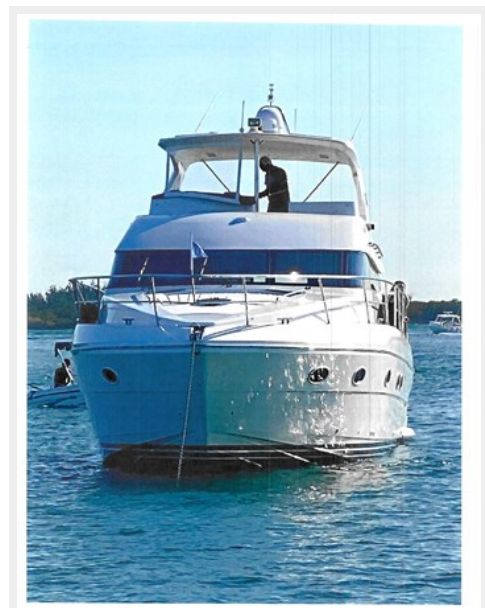
Stern Quarter Home Dock



Profile



Bow



Logo



CONTACTS

Andrey Shestakov, leading yacht broker of the sales department of Shestakov Yacht Sales Inc. Shestakov Yacht Sales Inc., the official representative of the Miami/Fort Lauderdale FL headquarters.

Contact details

Email: andrey@shestakovyachtsales.com

Web: shestakovyachtsales.com/en/

Telephones

USA: +1(954)274-4435

Office hours

Monday – Saturday: **9:00 - 21:00** EDT

Sunday: **closed**

Address



Harbour Towne Marina, 850 NE 3rd St,
STE 213, Dania, FL 33004