

TAIPAN OF WALES — PENDENNIS



Builder: PENDENNIS

Year Built: 1991

Model: Cruising Ketch

Price: €3,300,000 EUR

Location: Spain

LOA: 122' 9" (37.4mm)

Beam: 26.9

Max Draft: 11' 6" (3.5mm)

Cruise Speed: 10 Knots Kts. (12 MPH)

Max Speed: 12.5 Knots Kts. (14 MPH)

Our experienced yacht broker, Andrey Shestakov, will help you choose and buy a yacht that best suits your needs **TAIPAN OF WALES — PENDENNIS** from our catalogue. Presently, at Shestakov Yacht Sales Inc., we have a wide variety of yachts available on our sale's list. We also work in close contact with all the big yacht manufacturers from all over the world.

If you would like to buy a yacht **TAIPAN OF WALES — PENDENNIS** or would like help answering any questions concerning purchasing, selling or chartering a yacht, please call **+1(954)274-4435**

TABLE OF CONTENTS

TABLE OF CONTENTS	2
SPECIFICATIONS	3
Overview	3
Basic Information	3
Dimensions	3
Speed, Capacities and Weight	3
Accommodations	4
Hull and Deck Information	4
Engine Information	4
PHOTOS	5
CONTACTS	12
Contact details	12
Telephones	12
Office hours	12
Address	12

SPECIFICATIONS

Overview

A tried and tested 37m blue water cruising ketch by renowned Naval Architect Ed Dubois with a beautiful interior by Terence Disdale Design. With a versatile four-stateroom layout and generous full beam master stateroom aft plus an open plan main salon and wheelhouse with great views through the wrap-around windscreen, she offers great comfort with the ease and blue water performance of a ketch rig. Key features:- Iconic Dubois 37 m sailing yacht by Pendennis Shipyard- Versatile four-stateroom interior layout by Terence Dinsdale design- Great comfort with the ease and blue water performance of a ketch rig- Constantly upgraded and immaculately maintained- Upgraded carbon masts and rigging

Basic Information

Category: Cruising Ketch

Model Year: 1991

Year Built: 1991

Country: Spain

Dimensions

LOA: 122' 9" (37.4mm)

LWL: 111' 6" (33.97mm)

Beam: 26.9

Max Draft: 11' 6" (3.5mm)

Speed, Capacities and Weight

Cruise Speed: 10 Knots Kts. (12 MPH)

Cruise Speed Range: 4700

Max Speed: 12.5 Knots Kts. (14 MPH)

Gross Tonnage: 169 Pounds

Water Capacity: 9000 Gallons

Fuel Capacity: 6023.12 Gal Gallons

Accommodations

Total Cabins: 4

Sleeps: 8

Crew Cabin: 6

Crew Berths: 3

Hull and Deck Information

Hull Material: Aluminum

Deck Material: Teak

Hull Designer: Dubois

Exterior Designer: Dubois

Interior Designer: Terence Disdale

Engine Information

Engines: 1

Manufacturer: MTU

Engine Type: Inboard

PHOTOS



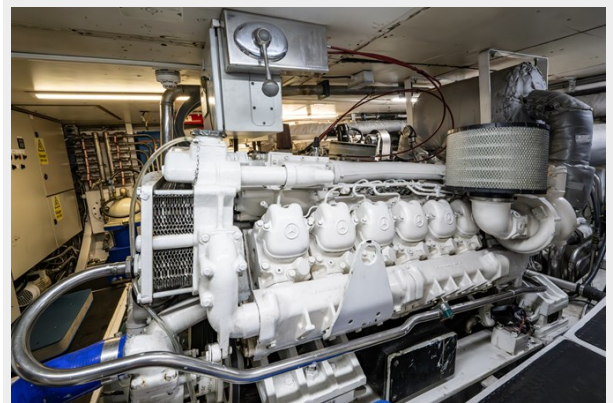












CONTACTS

Andrey Shestakov, leading yacht broker of the sales department of Shestakov Yacht Sales Inc. Shestakov Yacht Sales Inc., the official representative of the Miami/Fort Lauderdale FL headquarters.

Contact details

Email: andrey@shestakovyachtsales.com

Web: shestakovyachtsales.com/en/

Telephones

USA: +1(954)274-4435

Office hours

Monday – Saturday: **9:00 - 21:00** EDT

Sunday: **closed**

Address



Harbour Towne Marina, 850 NE 3rd St,
STE 213, Dania, FL 33004