

## 420 SEDAN BRIDGE — SEA RAY



**Builder:** SEA RAY

**LOA:** 42' (12.8mm)

**Year Built:** 2004

**Model:** Motor Yacht

**Price:** \$299,000 USD

**Location:** United States

Our experienced yacht broker, Andrey Shestakov, will help you choose and buy a yacht that best suits your needs 420 Sedan Bridge — SEA RAY from our catalogue. Presently, at Shestakov Yacht Sales Inc., we have a wide variety of yachts available on our sale's list. We also work in close contact with all the big yacht manufacturers from all over the world.

If you would like to buy a yacht 420 Sedan Bridge — SEA RAY or would like help answering any questions concerning purchasing, selling or chartering a yacht, please call +1(954)274-4435

# TABLE OF CONTENTS

TABLE OF CONTENTS	2
SPECIFICATIONS	4
Overview	4
Basic Information	4
Dimensions	5
Speed, Capacities and Weight	5
Accommodations	5
Hull and Deck Information	5
Engine Information	5
PHOTOS	6
9204569_20240123073927009_1_XLARGE	6
9204569_20240123073923962_1_XLARGE	6
9204569_20240123074206117_1_XLARGE	6
9204569_20240123074208199_1_XLARGE	6
9204569_20240123073928952_1_XLARGE	6
9204569_20240123073930963_1_XLARGE	6
9204569_20240123073931975_1_XLARGE	7
9204569_20240123073932975_1_XLARGE	7
9204569_20240123073933948_1_XLARGE	7
9204569_20240123073934961_1_XLARGE	7
9204569_20240123073935955_1_XLARGE	7
9204569_20240123073936992_1_XLARGE	7
9204569_20240123073937967_1_XLARGE	8
9204569_20240123073939008_1_XLARGE	8
9204569_20240123073939965_1_XLARGE	8
9204569_20240123073940939_1_XLARGE	8
9204569_20240123073941945_1_XLARGE	8
9204569_20240123073942979_1_XLARGE	8

---

9204569_20240123073943936_1_XLARGE	9
9204569_20240123073945177_1_XLARGE	9
9204569_20240123073946961_1_XLARGE	9
9204569_20240123073947992_1_XLARGE	9
9204569_20240123074151999_1_XLARGE	9
9204569_20240123074154027_1_XLARGE	9
9204569_20240123074156050_1_XLARGE	10
9204569_20240123074157019_1_XLARGE	10
9204569_20240123074159034_1_XLARGE	10
9204569_20240123074201003_1_XLARGE	10
9204569_20240123074201974_1_XLARGE	10
9204569_20240123074203073_1_XLARGE	10
9204569_20240123074210097_1_XLARGE	11
9204569_20240123074204974_1_XLARGE	11
9204569_20240123074211134_1_XLARGE	11
9204569_20240123074213094_1_XLARGE	11
9204569_20240123074215065_1_XLARGE	12
CONTACTS	13
Contact details	13
Telephones	13
Office hours	13
Address	13

---

---

# SPECIFICATIONS

---

## Overview

---

2004 420 Sedan Bridge fully loaded with lots of upgrades!!

- T-Cummins 6CTA 8.3M Diesel 480hp
- Onan 9kw Generator
- 1 Garmin 16" GPS (New)
- 2 Garmin 10" GPS (New)
- 1 Garmin 9" GPS in Cockpit (New)
- 1 Garmin VHF (New)
- Custom Plexi Panel for flush electronic
- Custom Plexi Panel for bocatech switch
- Steering Wheel (New)
- Cellphone Charger
- Flybridge A/C Unit (New)
- Fusion Stereo with swim platform remote control
- JL Audio Speakers (New)
- LED Lumitek lights throughout with POCO control (New)
- 7 Under-water Lights RGBD (New) 5 aft and 1 each hull-side
- Camera System in Salon, engine room, cockpit and Flybridge (New)
- Ice Maker in Salon (New)
- Water-maker (New)
- Up/Down LED TV in Salon custom built in aft of sofa
- Freezer below galley steps
- 3 A/C 16,000BTU (New)
- Upholstery in Flybridge and Cockpit (New)
- Synthetic Teak in Flybridge, Cockpit and Fly Ladders
- Custom Interior Decor
- Salon Door with Electronic Keypad
- Stainless Steel Anchor with SS Chain

---

## Basic Information

---

**Category:** Motor Yacht

**Model Year:** 2004

**Year Built:** 2004

**Country:** United States

---

## Dimensions

---

**LOA:** 42' (12.8mm)

---

## Speed, Capacities and Weight

---

**Water Capacity:** 120 Gallons

**Holding Tank:** 42 Gal Gallons

**Fuel Capacity:** 350 Gal Gallons

---

## Accommodations

---

**Total Cabins:** 2

**Total Heads:** 2

---

## Hull and Deck Information

---

**Hull Material:** Fiberglass

---

## Engine Information

---

**Engines:** 2

**Manufacturer:** Cummins

**Engine Type:** Inboard

**Fuel Type:** Diesel

# PHOTOS

9204569\_20240123073927009\_1\_XLARGE



9204569\_20240123073923962\_1\_XLARGE



9204569\_20240123074206117\_1\_XLARGE



9204569\_20240123074208199\_1\_XLARGE



9204569\_20240123073928952\_1\_XLARGE



9204569\_20240123073930963\_1\_XLARGE



9204569\_20240123073931975\_1\_XLARGE



9204569\_20240123073932975\_1\_XLARGE



9204569\_20240123073933948\_1\_XLARGE



9204569\_20240123073934961\_1\_XLARGE



9204569\_20240123073935955\_1\_XLARGE



9204569\_20240123073936992\_1\_XLARGE



9204569\_20240123073937967\_1\_XLARGE



9204569\_20240123073939008\_1\_XLARGE



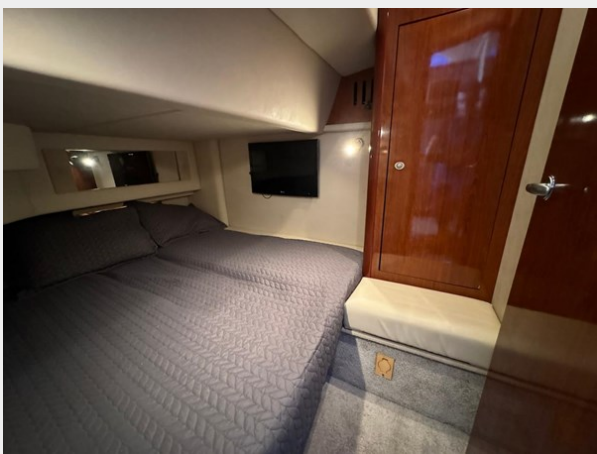
9204569\_20240123073939965\_1\_XLARGE



9204569\_20240123073940939\_1\_XLARGE



9204569\_20240123073941945\_1\_XLARGE



9204569\_20240123073942979\_1\_XLARGE





9204569\_20240123073943936\_1\_XLARGE



9204569\_20240123073945177\_1\_XLARGE



9204569\_20240123073946961\_1\_XLARGE



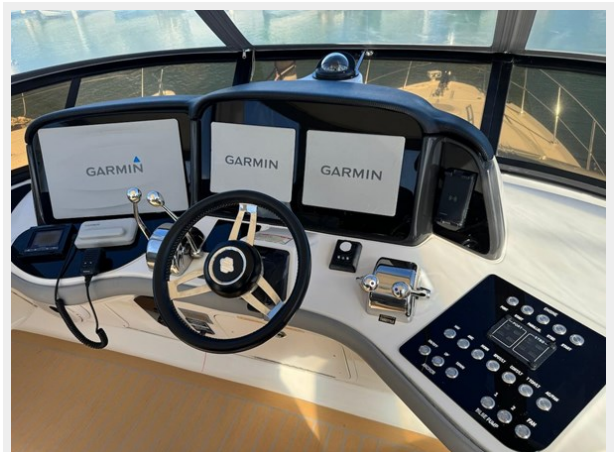
9204569\_20240123073947992\_1\_XLARGE



9204569\_20240123074151999\_1\_XLARGE



9204569\_20240123074154027\_1\_XLARGE



9204569\_20240123074156050\_1\_XLARGE



9204569\_20240123074157019\_1\_XLARGE



9204569\_20240123074159034\_1\_XLARGE



9204569\_20240123074201003\_1\_XLARGE



9204569\_20240123074201974\_1\_XLARGE

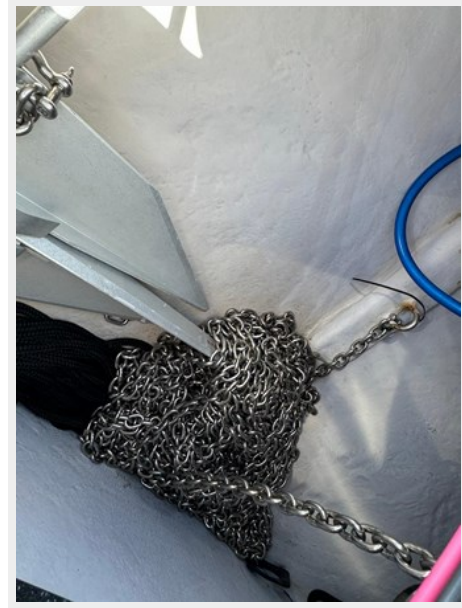


9204569\_20240123074203073\_1\_XLARGE



9204569\_20240123074210097\_1\_XLARGE

9204569\_20240123074204974\_1\_XLARGE



9204569\_20240123074211134\_1\_XLARGE



9204569\_20240123074213094\_1\_XLARGE



9204569\_20240123074215065\_1\_XLARGE



# CONTACTS

---

Andrey Shestakov, leading yacht broker of the sales department of Shestakov Yacht Sales Inc. Shestakov Yacht Sales Inc., the official representative of the Miami/Fort Lauderdale FL headquarters.

## Contact details

---

Email: [andrey@shestakovyachtsales.com](mailto:andrey@shestakovyachtsales.com)

Web: [shestakovyachtsales.com/en/](http://shestakovyachtsales.com/en/)

## Telephones

---

USA: +1(954)274-4435

## Office hours

---

Monday – Saturday: **9:00 - 21:00** EDT

Sunday: **closed**

## Address

---



Harbour Towne Marina, 850 NE 3rd St,  
STE 213, Dania, FL 33004