

COOL CHANGE — SEA RAY



Builder: SEA RAY

Year Built: 2008

Model: cruiser

Price: \$625,000 USD

Location: United States

LOA: 55' (16.76mm)

Beam: 15.91

Max Draft: 4' 6" (1.37mm)

Our experienced yacht broker, Andrey Shestakov, will help you choose and buy a yacht that best suits your needs **COOL CHANGE — SEA RAY** from our catalogue. Presently, at Shestakov Yacht Sales Inc., we have a wide variety of yachts available on our sale's list. We also work in close contact with all the big yacht manufacturers from all over the world.

If you would like to buy a yacht **COOL CHANGE — SEA RAY** or would like help answering any questions concerning purchasing, selling or chartering a yacht, please call **+1(954)274-4435**

TABLE OF CONTENTS

TABLE OF CONTENTS	2
SPECIFICATIONS	3
Overview	3
Basic Information	3
Dimensions	4
Speed, Capacities and Weight	4
Accommodations	4
Hull and Deck Information	4
Engine Information	4
PHOTOS	5
CONTACTS	15
Contact details	15
Telephones	15
Office hours	15
Address	15

SPECIFICATIONS

Overview

Introduced in 2008, the 55 Sundancer (later known as the 580 Sundancer) took the company's innovative and industry-leading concept of yachting and elegance to the next level. With a striking exterior shape and presence, the 55 Sundancer is sure to turn heads wherever she goes. Teak flooring and Ultra-leather occupy the cockpit area which boasts a fantastic round adjustable bench seating for customizability and comfort. The semi-enclosed hard top boasts automatic open and closing skylights on both the port and starboard sides and offers an amazing panoramic view from all areas of the helm and cockpit alike. Below deck the use of space is unmatched, with a full-size galley and opposite seating/dinette area which converts to a double berth.

- Twin MAN 900CR
- New Electronics
- New Ice maker
- New Microwave
- New Canvas
- New Bilge Pumps
- New Engine Room Lights
- New Paint Stripe
- New Refrigerator/Freezers
- New Teak Swim Platform

Basic Information

Category: cruiser

Sub Category: Express

Model Year: 2008

Year Built: 2008

Country: United States

Dimensions

LOA: 55' (16.76mm)

Beam: 15.91

Max Draft: 4' 6" (1.37mm)

Speed, Capacities and Weight

Water Capacity: 200 Gallons

Holding Tank: 70 Gal Gallons

Fuel Capacity: 825 Gal Gallons

Accommodations

Total Cabins: 2

Hull and Deck Information

Hull Material: Fiberglass

Hull Configuration: Deep Vee

Engine Information

Engines: 2

Manufacturer: MAN

Engine Type: Inboard

Fuel Type: Diesel

PHOTOS

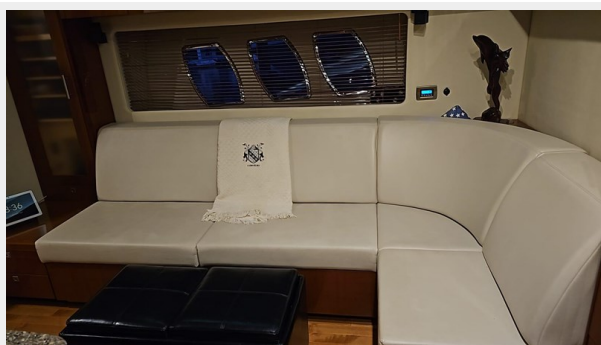
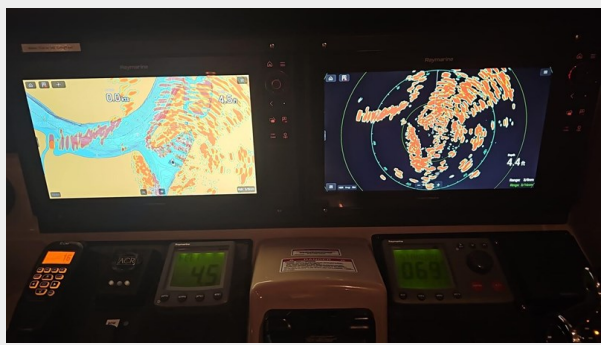
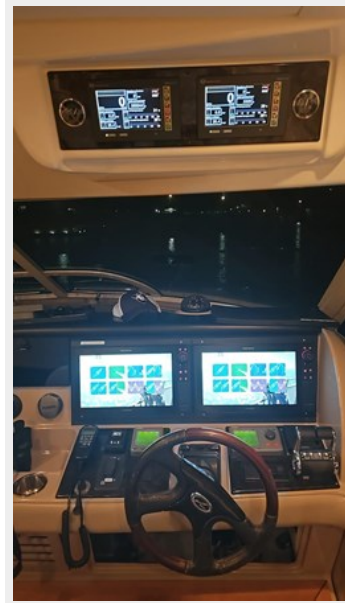
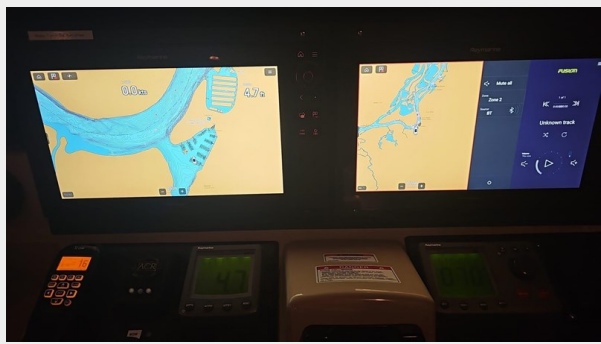




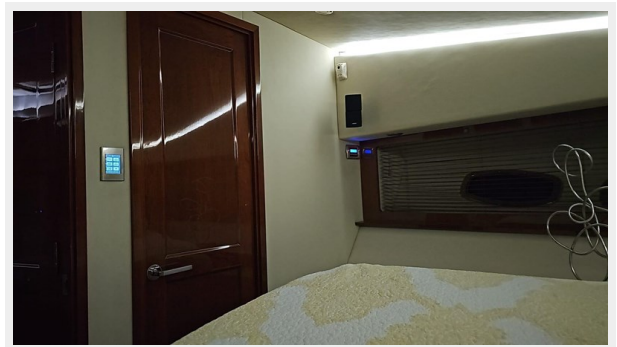




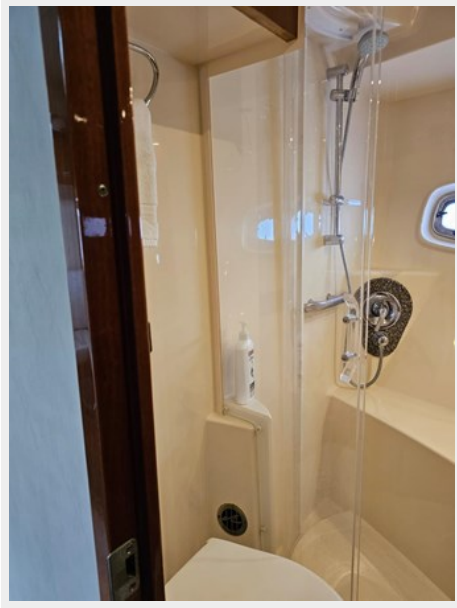












CONTACTS

Andrey Shestakov, leading yacht broker of the sales department of Shestakov Yacht Sales Inc. Shestakov Yacht Sales Inc., the official representative of the Miami/Fort Lauderdale FL headquarters.

Contact details

Email: andrey@shestakovyachtsales.com

Web: shestakovyachtsales.com/en/

Telephones

USA: +1(954)274-4435

Office hours

Monday – Saturday: **9:00 - 21:00** EDT

Sunday: **closed**

Address



Harbour Towne Marina, 850 NE 3rd St,
STE 213, Dania, FL 33004