

ST. NICHOLAS — DE ALM



Builder: DE ALM

Year Built: 2019

Model: expedition yacht

Price: \$1,790,000 USD

Location: Cyprus

LOA: 65' 6" (19.94mm)

Beam: 18.5

Min Draft: 5' 5" (1.65mm)

Cruise Speed: 7 Knots Kts. (8 MPH)

Max Speed: 10 Knots Kts. (12 MPH)

Our experienced yacht broker, Andrey Shestakov, will help you choose and buy a yacht that best suits your needs **ST. NICHOLAS — DE ALM** from our catalogue. Presently, at Shestakov Yacht Sales Inc., we have a wide variety of yachts available on our sale's list. We also work in close contact with all the big yacht manufacturers from all over the world.

If you would like to buy a yacht **ST. NICHOLAS — DE ALM** or would like help answering any questions concerning purchasing, selling or chartering a yacht, please call **+1(954)274-4435**

TABLE OF CONTENTS

TABLE OF CONTENTS	2
SPECIFICATIONS	5
Overview	5
Basic Information	5
Dimensions	5
Speed, Capacities and Weight	5
Accommodations	6
Hull and Deck Information	6
Engine Information	6
PHOTOS	7
2022-12-09 00.11.39	7
2022-12-09 00.12.20	7
60e1c7a9-5b97-45e9-a7f4-f86a4318bc24	7
6a6323dc-9df9-477f-8adb-732eb6cb4ba5	7
67393042-c019-40a2-8af4-b0817bc22a13	8
IMG-0838	8
IMG-0840	8
IMG-0841	8
IMG-0843	9
IMG-0845	9
IMG-0851	9
IMG-0856	9
IMG-0868	10
IMG-0870	10
IMG-0873	10
IMG-0878	10
IMG-0896	10
IMG-0898	10

IMG-0904	11
IMG-0907	11
58faa2d8-fc42-456e-9186-b5962e7bee07	11
23acfc90-bbe0-4173-8843-3aa223bb9371	11
0969e45d-4c50-4848-ae3e-e70701ea90fb	12
12dac753-0c08-40d0-9f30-9de978c7ead5	12
6fd5861d-68c0-4ad2-a425-51255376665c	12
f15de945-c3d9-4e8c-9af2-f036e66cb219	12
IMG-0773	13
IMG-0807	13
IMG-0776	13
IMG-0762	13
IMG-0808	14
IMG-0810	14
IMG-0816	14
IMG-0821	14
IMG-0823	15
IMG-0827	15
IMG-0824	15
IMG-0825	15
IMG-0829	16
IMG-0832	16
IMG-0880	16
IMG-0884	16
IMG-0886	16
IMG-0888	16
CONTACTS	17
Contact details	17
Telephones	17

Office hours	17
Address	17

SPECIFICATIONS

Overview

A very special boat, built exclusively in accordance with the Dutch tradition of quality and customized by an experienced owner during design and construction. Practically, not a single basic option in the specification. Exceptionally reliable German Vitus Deutz engines. Super low noise levels. Additional generator power. Huge fuel tank. Waste disposal system. Double glazing. Quarantine zone. And much more, which makes this small boat a serious player in the market of long-range explorers with a true autonomy of the transatlantic passage. Excellent seaworthiness is achieved thanks to the exceptional precision of naval architecture. And you will immediately notice it in the contours of the body. This elegant explorer will delight its owner for years to come. Unique offer on the market.

Basic Information

Category: expedition yacht

Sub Category: Expedition or Explorer

Model Year: 2019

Year Built: 2019

Country: Cyprus

Dimensions

LOA: 65' 6" (19.94mm)

Beam: 18.5

Min Draft: 5' 5" (1.65mm)

Speed, Capacities and Weight

Cruise Speed: 7 Knots Kts. (8 MPH)

Cruise Speed Range: 4500

Max Speed: 10 Knots Kts. (12 MPH)

Water Capacity: 1000 Gallons

Fuel Capacity: 2113.38 Gal Gallons

Accommodations

Total Cabins: 4

Sleeps: 6

Crew Berths: 2

Hull and Deck Information

Hull Material: Steel

Deck Material: Teak and Steel

Interior Designer: Mahonie

Engine Information

Engines: 2

Manufacturer: Vetus-Deutz

Engine Type: Inboard

Fuel Type: Diesel

PHOTOS

2022-12-09 00.11.39

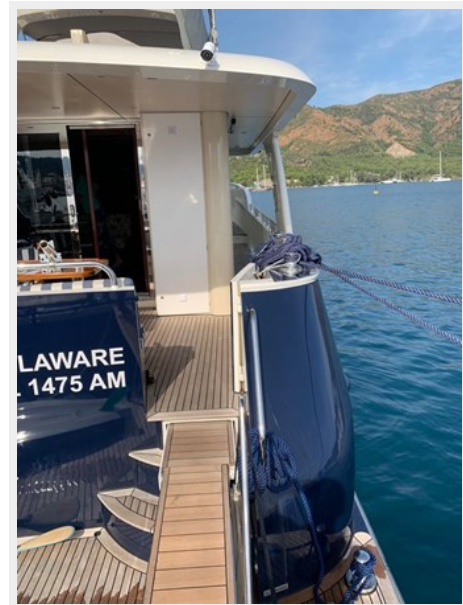


2022-12-09 00.12.20



60e1c7a9-5b97-45e9-a7f4-f86a4318bc24

6a6323dc-9df9-477f-8adb-732eb6cb4ba5



67393042-c019-40a2-8af4-b0817bc22a13



IMG-0838



IMG-0840



IMG-0841



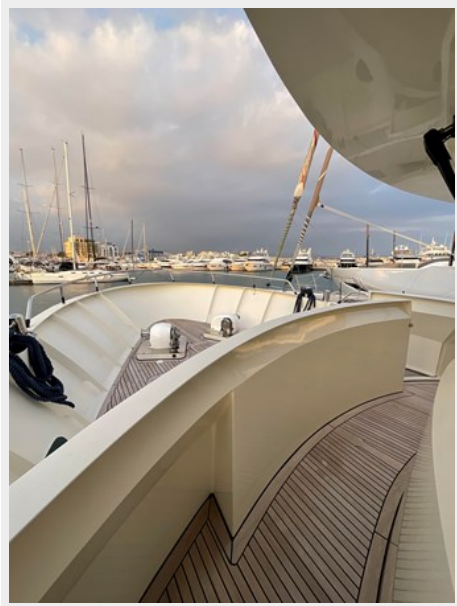
IMG-0843



IMG-0845



IMG-0851



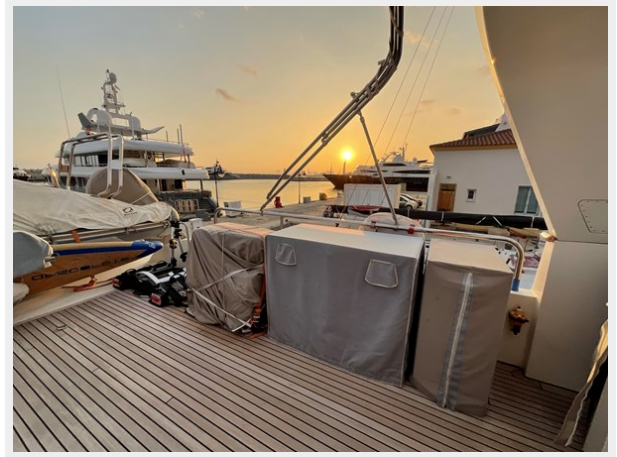
IMG-0856



IMG-0868



IMG-0870



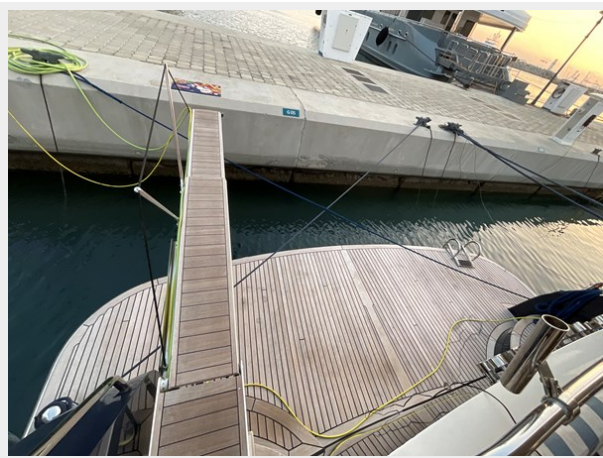
IMG-0873



IMG-0878



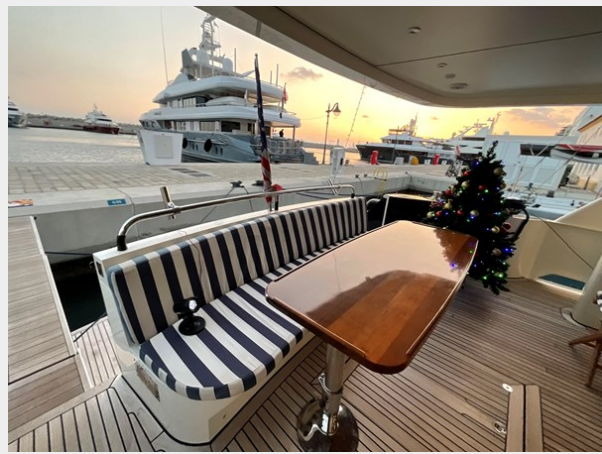
IMG-0896



IMG-0898



IMG-0904

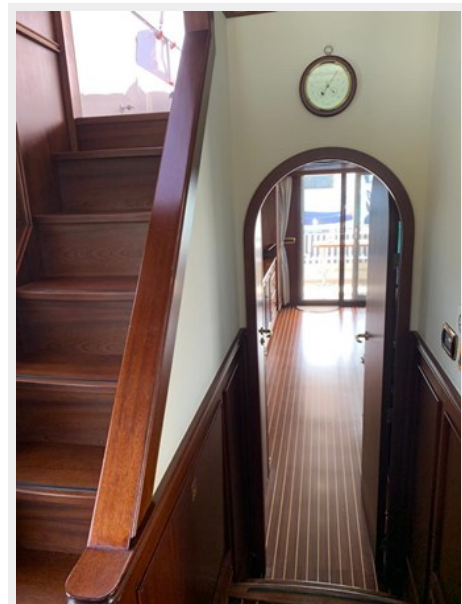


IMG-0907

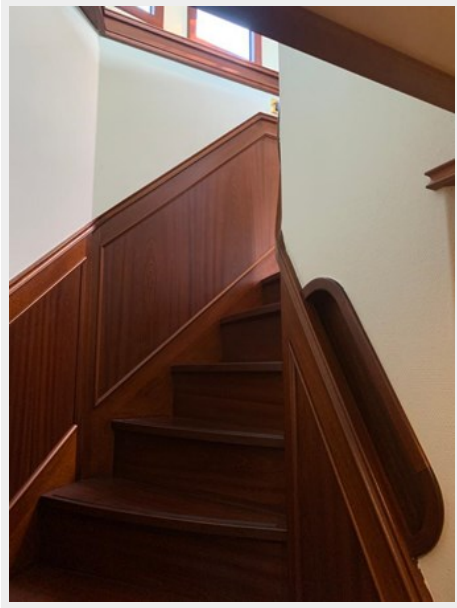


58faa2d8-fc42-456e-9186-b5962e7bee07

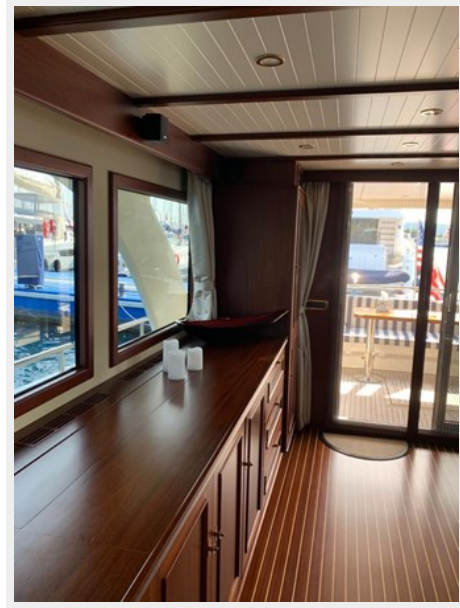
23acfc90-bbe0-4173-8843-3aa223bb9371



0969e45d-4c50-4848-ae3e-e70701ea90fb



12dac753-0c08-40d0-9f30-9de978c7ead5



6fd5861d-68c0-4ad2-a425-51255376665c

f15de945-c3d9-4e8c-9af2-f036e66cb219



IMG-0773



IMG-0807



IMG-0776



IMG-0762



IMG-0808



IMG-0810



IMG-0816



IMG-0821



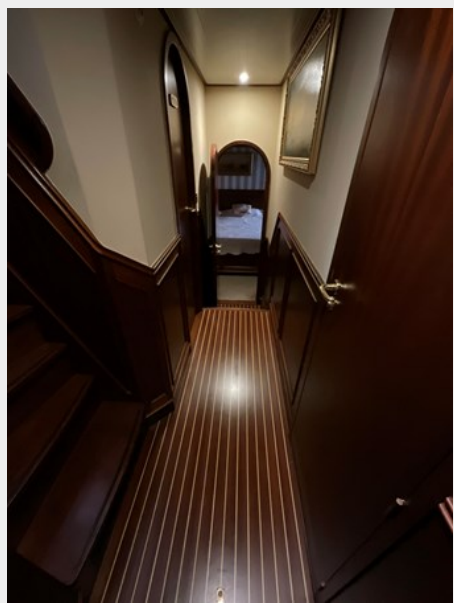
IMG-0823



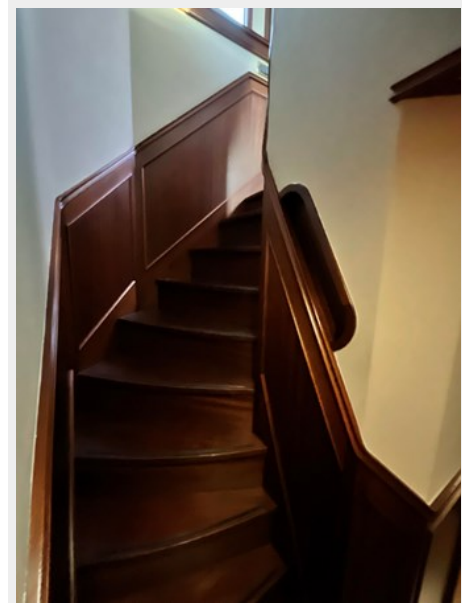
IMG-0827



IMG-0824



IMG-0825



IMG-0829



IMG-0832



IMG-0880



IMG-0884



IMG-0886



IMG-0888



CONTACTS

Andrey Shestakov, leading yacht broker of the sales department of Shestakov Yacht Sales Inc. Shestakov Yacht Sales Inc., the official representative of the Miami/Fort Lauderdale FL headquarters.

Contact details

Email: andrey@shestakovyachtsales.com

Web: shestakovyachtsales.com/en/

Telephones

USA: +1(954)274-4435

Office hours

Monday – Saturday: **9:00 - 21:00** EDT

Sunday: **closed**

Address



Harbour Towne Marina, 850 NE 3rd St,
STE 213, Dania, FL 33004