

DAVINAKI — VIKING



Builder: VIKING

Year Built: 2000

Model: Convertible

Price: Price on Application

Location: United States

LOA: 55' 10" (17.02m)

Beam: 17.33

Max Draft: 4' 10" (1.47m)

Cruise Speed: 30 Knots Kts. (35 MPH)

Max Speed: 34 Knots Kts. (39 MPH)

Our experienced yacht broker, Andrey Shestakov, will help you choose and buy a yacht that best suits your needs **DAVINAKI — VIKING** from our catalogue. Presently, at Shestakov Yacht Sales Inc., we have a wide variety of yachts available on our sale's list. We also work in close contact with all the big yacht manufacturers from all over the world.

If you would like to buy a yacht **DAVINAKI — VIKING** or would like help answering any questions concerning purchasing, selling or chartering a yacht, please call **+1(954)274-4435**

TABLE OF CONTENTS

TABLE OF CONTENTS	2
SPECIFICATIONS	3
Overview	3
Basic Information	3
Dimensions	3
Speed, Capacities and Weight	3
Accommodations	4
Hull and Deck Information	4
Engine Information	4
PHOTOS	5
CONTACTS	16
Contact details	16
Telephones	16
Office hours	16
Address	16

SPECIFICATIONS

Overview

The 55c is one of the best selling models to come from the Viking assembly line, being introduced in 1997 and seeing a total of 111 built over a span of 6 years. The 55 is not too big, not too small, has excellent performance coupled with a great riding hull and is a proven platform while fishing in the swells.

"DAVINAKI" has been owned by her current owner for the last 2 years where she spent a year in Greece. She has seen some really good upgrades over the years like new Garmin electronics and REBUILT engines. She's aggressively priced with a VERY keen seller who will CONSIDER ALL OFFERS. Take a look in person to see how this 55 outshines her competition and stands apart from the pack.

Basic Information

Category: Convertible

Sub Category: Convertible

Model Year: 2000

Year Built: 2000

Country: United States

Dimensions

LOA: 55' 10" (17.02mm)

Beam: 17.33

Max Draft: 4' 10" (1.47mm)

Speed, Capacities and Weight

Cruise Speed: 30 Knots Kts. (35 MPH)

Max Speed: 34 Knots Kts. (39 MPH)

Water Capacity: 250 Gallons

Fuel Capacity: 1550 Gal Gallons

Accommodations

Total Cabins: 3

Total Berths: 5

Sleeps: 6

Total Heads: 2

Hull and Deck Information

Hull Material: Fiberglass

Engine Information

Engines: 2

Manufacturer: MAN

Engine Type: Inboard

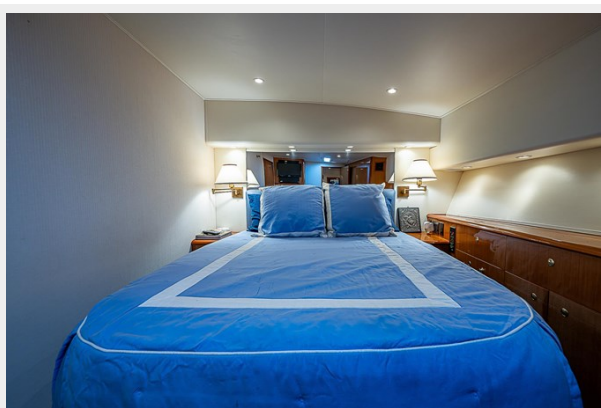
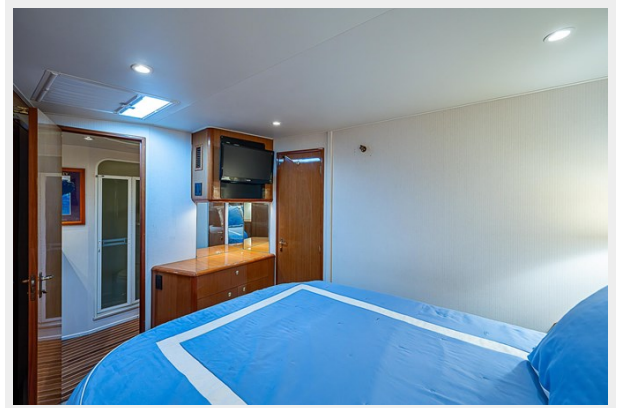
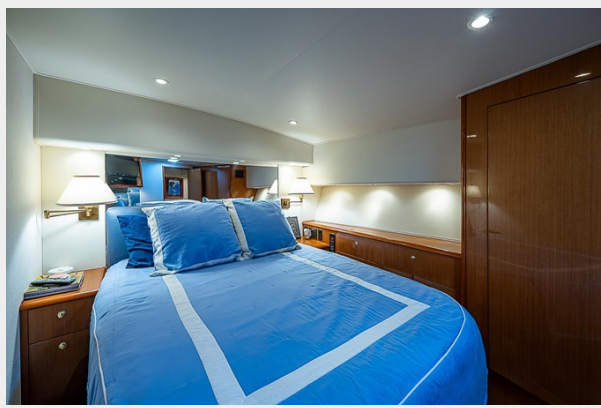
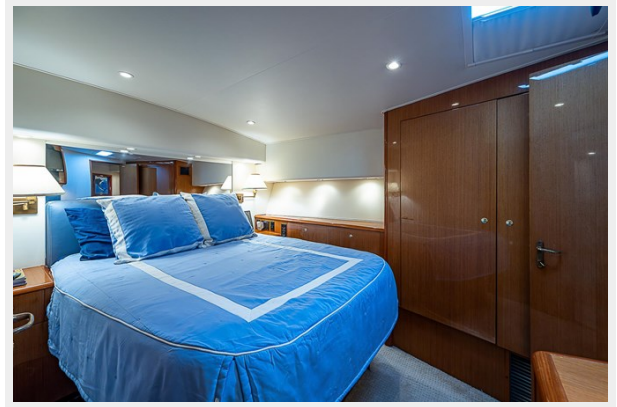
Fuel Type: Diesel

PHOTOS























CONTACTS

Andrey Shestakov, leading yacht broker of the sales department of Shestakov Yacht Sales Inc. Shestakov Yacht Sales Inc., the official representative of the Miami/Fort Lauderdale FL headquarters.

Contact details

Email: andrey@shestakovyachtsales.com

Web: shestakovyachtsales.com/en/

Telephones

USA: +1(954)274-4435

Office hours

Monday – Saturday: **9:00 - 21:00** EDT

Sunday: **closed**

Address



Harbour Towne Marina, 850 NE 3rd St,
STE 213, Dania, FL 33004