

LUCY — REGULATOR



Builder: REGULATOR

Year Built: 2001

Model: Sport Fisherman

Price: \$53,500 CAD

Location: Canada

LOA: 20' 6" (6.25mm)

Beam: 8.16

Max Draft: 2' 3" (0.69mm)

Our experienced yacht broker, Andrey Shestakov, will help you choose and buy a yacht that best suits your needs **Lucy — REGULATOR** from our catalogue. Presently, at Shestakov Yacht Sales Inc., we have a wide variety of yachts available on our sale's list. We also work in close contact with all the big yacht manufacturers from all over the world.

If you would like to buy a yacht **Lucy — REGULATOR** or would like help answering any questions concerning purchasing, selling or chartering a yacht, please call **+1(954)274-4435**

TABLE OF CONTENTS

TABLE OF CONTENTS	2
SPECIFICATIONS	4
Basic Information	4
Dimensions	4
Speed, Capacities and Weight	4
Hull and Deck Information	4
Engine Information	4
PHOTOS	5
Port quarter IMG_2163	5
Stbd profile IMG_2207	5
Stbd quarter profile IMG_2209	5
Engine from stbd stern IMG_2208	5
Seat above battery locker - stbd IMG_2219	6
Battery - stbd aft IMG_2218	6
Seat above battery locker - port IMG_2217	6
Battery & extinguisher - port aft IMG_2216	6
Console & T-top canvas IMG_2210	7
Console at helm IMG_2212	7
Console - helm IMG_2213	7
Console - stbd IMG_2211	7
Console - stowage under dash IMG_2214	8
Console - stowage under dash IMG_2215	8
Console seat-locker fwd IMG_2223	8
Console seat-locker fwd IMG_2222	8
Bow IMG_2224	9
Anchor in locker IMG_2225	9
Pop-up midships cleat - stbd IMG_2221	9
Pop-up midships cleat - stbd IMG_2220	9

Dockside water connection to tap IMG_2226	10
CONTACTS	11
Contact details	11
Telephones	11
Office hours	11
Address	11

SPECIFICATIONS

Basic Information

Category: Sport Fisherman

Model Year: 2001

Year Built: 2001

Country: Canada

Dimensions

LOA: 20' 6" (6.25mm)

Beam: 8.16

Max Draft: 2' 3" (0.69mm)

Speed, Capacities and Weight

Fuel Capacity: 99 Gal Gallons

Hull and Deck Information

Hull Material: Fiberglass

Deck Material: Fiberglass

Hull Configuration: Deep Vee

Engine Information

Engines: 1

Manufacturer: Yamaha

Engine Type: Outboard

Fuel Type: Gas

PHOTOS

Stbd profile IMG_2207



Port quarter IMG_2163



Stbd quarter profile IMG_2209



Engine from stbd stern IMG_2208



Seat above battery locker - stbd IMG_2219



Battery - stbd aft IMG_2218



Seat above battery locker - port IMG_2217



Battery & extinguisher - port aft IMG_2216



Console & T-top canvas IMG_2210



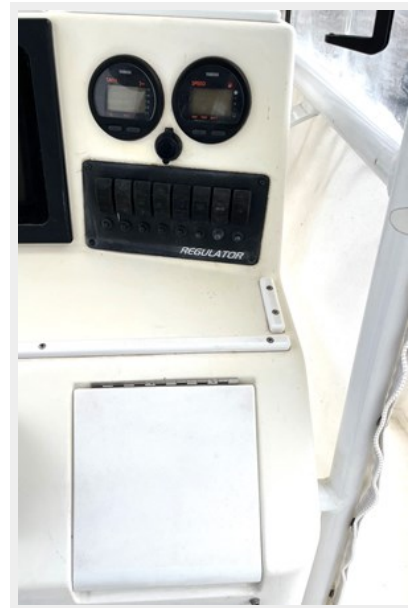
Console at helm IMG_2212



Console - helm IMG_2213



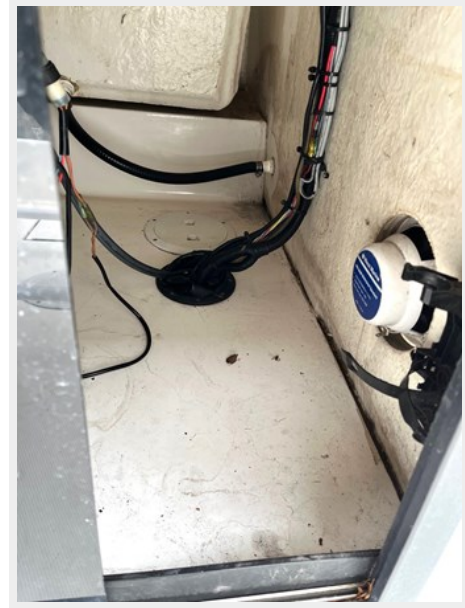
Console - stbd IMG_2211



Console - stowage under dash IMG_2214



Console - stowage under dash IMG_2215



Console seat-locker fwd IMG_2223



Console seat-locker fwd IMG_2222



Bow IMG_2224



Anchor in locker IMG_2225



Pop-up midships cleat - stbd IMG_2220



Pop-up midships cleat - stbd IMG_2221



Dockside water connection to tap IMG_2226



CONTACTS

Andrey Shestakov, leading yacht broker of the sales department of Shestakov Yacht Sales Inc. Shestakov Yacht Sales Inc., the official representative of the Miami/Fort Lauderdale FL headquarters.

Contact details

Email: andrey@shestakovyachtsales.com

Web: shestakovyachtsales.com/en/

Telephones

USA: +1(954)274-4435

Office hours

Monday – Saturday: **9:00 - 21:00** EDT

Sunday: **closed**

Address



Harbour Towne Marina, 850 NE 3rd St,
STE 213, Dania, FL 33004