

GRACE — C.E. RYDER CORP



Builder: C.E. RYDER CORP

Year Built: 1981

Model: Cruising Sailboat

Price: \$104,900 USD

Location: United States

LOA: 39' 1" (11.91mm)

Beam: 13.83

Min Draft: 5' 7" (1.68mm)

Max Draft: 5' 7" (1.68mm)

Cruise Speed: 6.5 Knots Kts. (7 MPH)

Max Speed: 7.5 Knots Kts. (9 MPH)

Our experienced yacht broker, Andrey Shestakov, will help you choose and buy a yacht that best suits your needs **GRACE — C.E. RYDER CORP** from our catalogue. Presently, at Shestakov Yacht Sales Inc., we have a wide variety of yachts available on our sale's list. We also work in close contact with all the big yacht manufacturers from all over the world.

If you would like to buy a yacht **GRACE — C.E. RYDER CORP** or would like help answering any questions concerning purchasing, selling or chartering a yacht, please call **+1(954)274-4435**

TABLE OF CONTENTS

TABLE OF CONTENTS	2
SPECIFICATIONS	5
Overview	5
Basic Information	5
Dimensions	5
Speed, Capacities and Weight	5
Accommodations	6
Hull and Deck Information	6
Engine Information	6
PHOTOS	7
5906303_20160817105101895_2_XLARGE	7
5906303_20160817105102510_1_XLARGE	7
5906303_20160820111147157_5_XLARGE	7
5906303_20160820111147888_4_XLARGE	7
5906303_20160820111152538_1_XLARGE	8
5906303_20160820111149431_3_XLARGE	8
5906303_20160820121631924_1_XLARGE	8
5906303_20160821091341146_1_XLARGE	8
5906303_20160821091836469_1_XLARGE	9
5906303_20160821091632365_1_XLARGE	9
5906303_20160821094117576_4_XLARGE	9
5906303_20160821094121416_1_XLARGE	9
5906303_20160821110245176_2_XLARGE	9
5906303_20160829114726554_1_XLARGE	9
5906303_20160829115127091_1_XLARGE	10
5906303_20160829115127091_1_XLARGE	10
5906303_20160829115344272_1_XLARGE	10
5906303_20160829115713909_1_XLARGE	10

Attachment	10
5906303_20160821110427322_1_XLARGE	10
image001	11
5906303_20160829111939483_1_XLARGE	11
P1010565	11
P1010567	11
P1010568	11
P1010569	11
P1010570	12
P1010571	12
P1010574	12
P1010583	12
P1010584	12
P1010585	12
P1010588	13
SC 39 - 32	13
SC 39 - 31	13
P1010589	13
P1010593	14
SC 39 - 13	14
SC 39 - 14	14
SC 39 - 20	14
SC 39 - 21	15
SC 39 - 21	15
SC 39 - 13	15
SC 39 - 22	15
SC 39 - 27	15
SC 39 - 23	15
SC 39 - 25	16

SC 39 - 28	16
SC 39 - 32a	16
SC 39 - 33	16
SC 39 - 37	16
SC 39 - 38	16
SC 39 - 39	17
CONTACTS	18
Contact details	18
Telephones	18
Office hours	18
Address	18

SPECIFICATIONS

Overview

Designed by the renowned naval architect Thomas Gillmer, her canoe stern along with a shapely rising sheer line make this yacht a real head turner. "GRACE" has been meticulously, lovingly maintained and extensively upgraded on an annual basis by her highly skilled and knowledgeable owners.. If you've been looking for a blue-water yacht with quality upgrades and caring owners then this classic beauty is a must see! Designed as a cutter with roller furling Yankee and Stay Sail, she also boasts a roller furling Genoa, allowing her to be sailed as a sloop. She shows beautifully and is ready for your blue water sailing dreams! You will be hard pressed to find an offshore vessel as well outfitted and maintained as "GRACE".

Basic Information

Category: Cruising Sailboat

Model Year: 1981

Year Built: 1981

Country: United States

Dimensions

LOA: 39' 1" (11.91mm)

Beam: 13.83

Min Draft: 5' 7" (1.68mm)

Max Draft: 5' 7" (1.68mm)

Speed, Capacities and Weight

Cruise Speed: 6.5 Knots Kts. (7 MPH)

Cruise Speed Range: 212

Max Speed: 7.5 Knots Kts. (9 MPH)

Max Speed Range: 166 Kts.

Gross Tonnage: 16 Pounds

Water Capacity: 55 Gallons

Holding Tank: 40 Gal Gallons

Fuel Capacity: 72 Gal Gallons

Accommodations

Total Cabins: 3

Sleeps: 6

Hull and Deck Information

Hull Material: Fiberglass

Deck Material: Fiberglass

Hull Configuration: Monohull

Interior Designer: C.E. Ryder

Engine Information

Engines: 1

Manufacturer: Yanmar

Engine Type: Inboard

Fuel Type: Diesel

PHOTOS

5906303_20160817105101895_2_XLARGE



5906303_20160817105102510_1_XLARGE



5906303_20160820111147157_5_XLARGE



5906303_20160820111147888_4_XLARGE



5906303_20160820111152538_1_XLARGE



5906303_20160820111149431_3_XLARGE



5906303_20160820121631924_1_XLARGE



5906303_20160821091341146_1_XLARGE



5906303_20160821091632365_1_XLARGE



5906303_20160821091836469_1_XLARGE



5906303_20160821094117576_4_XLARGE



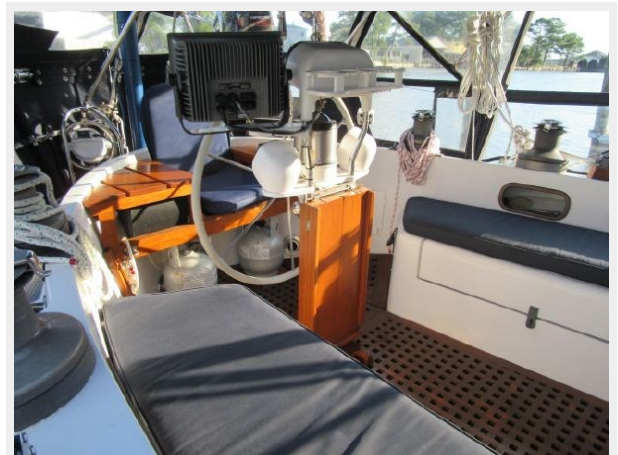
5906303_20160821094121416_1_XLARGE



5906303_20160821110245176_2_XLARGE



5906303_20160829114726554_1_XLARGE



5906303_20160829115127091_1_XLARGE



5906303_20160829115127091_1_XLARGE



5906303_20160829115344272_1_XLARGE



5906303_20160829115713909_1_XLARGE



Attachment

5906303_20160821110427322_1_XLARGE

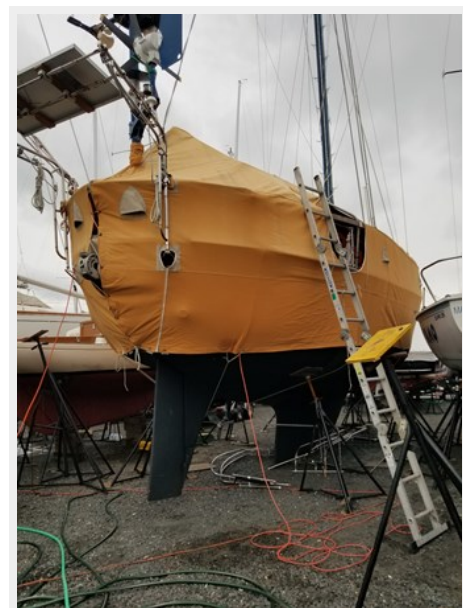
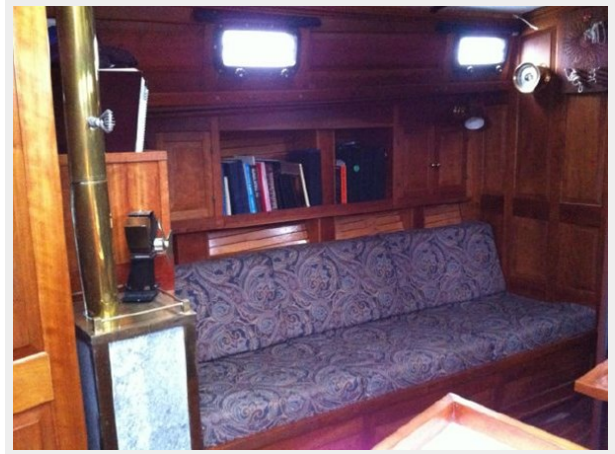


image001



5906303_20160829111939483_1_XLARGE



P1010565



P1010567



P1010568



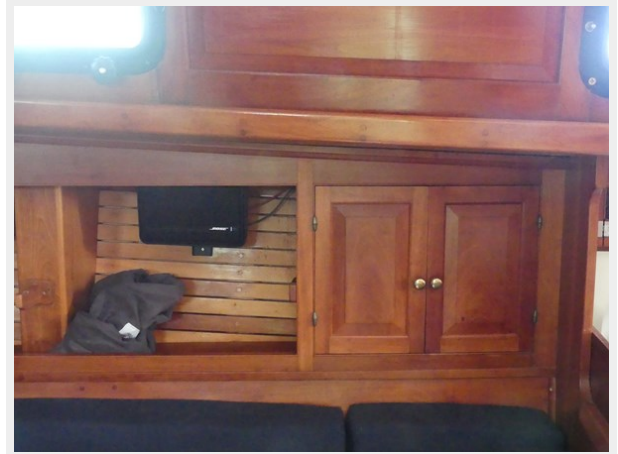
P1010569



P1010570



P1010571



P1010574



P1010583



P1010584



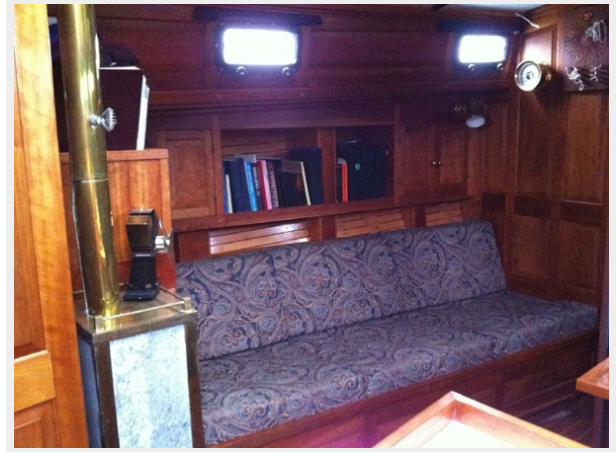
P1010585



P1010588



SC 39 - 32



SC 39 - 31



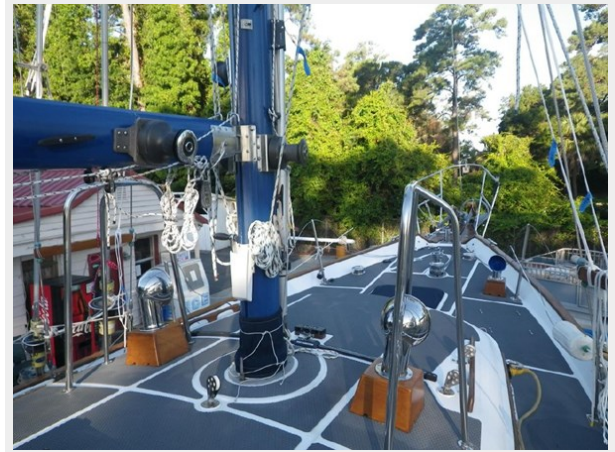
P1010589



P1010593



SC 39 - 13



SC 39 - 14



SC 39 - 20



SC 39 - 21



SC 39 - 21



SC 39 - 13



SC 39 - 22



SC 39 - 27



SC 39 - 23



SC 39 - 25



SC 39 - 28



SC 39 - 32a



SC 39 - 33



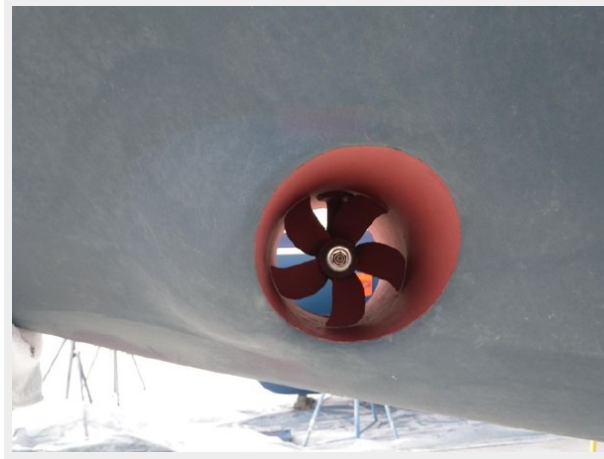
SC 39 - 37



SC 39 - 38



SC 39 - 39



CONTACTS

Andrey Shestakov, leading yacht broker of the sales department of Shestakov Yacht Sales Inc. Shestakov Yacht Sales Inc., the official representative of the Miami/Fort Lauderdale FL headquarters.

Contact details

Email: andrey@shestakovyachtsales.com

Web: shestakovyachtsales.com/en/

Telephones

USA: +1(954)274-4435

Office hours

Monday – Saturday: 9:00 - 21:00 EDT

Sunday: **closed**

Address



Harbour Towne Marina, 850 NE 3rd St,
STE 213, Dania, FL 33004