

## ICON — BENETEAU



**Builder:** BENETEAU

**Year Built:** 2014

**Model:** Cruising Sailboat

**Price:** PRICE ON APPLICATION

**Location:** N/A

**LOA:** 55' (16.76m)

**Beam:** 18.75

**Max Draft:** 78' 5" (23.9m)

Our experienced yacht broker, Andrey Shestakov, will help you choose and buy a yacht that best suits your needs **ICON — BENETEAU** from our catalogue. Presently, at Shestakov Yacht Sales Inc., we have a wide variety of yachts available on our sale's list. We also work in close contact with all the big yacht manufacturers from all over the world.

If you would like to buy a yacht **ICON — BENETEAU** or would like help answering any questions concerning purchasing, selling or chartering a yacht, please call **+1(954)274-4435**

---

# TABLE OF CONTENTS

---

TABLE OF CONTENTS	2
SPECIFICATIONS	3
Overview	3
Basic Information	3
Dimensions	3
Speed, Capacities and Weight	3
Accommodations	4
Hull and Deck Information	4
Engine Information	4
PHOTOS	5
CONTACTS	21
Contact details	21
Telephones	21
Office hours	21
Address	21

# SPECIFICATIONS

---

## Overview

---

The most equipped 55 Sailboat out there; with water maker, 4 water tanks, 2 fuel tanks, crew cabin with head, davits, 4 scuba tanks holders and paddle boards racks among others.

The audacious and innovative concept of the Sense range of cruisers found full expression in the Sense 55. The cabins resemble bedrooms, the circulation on board was designed on one level, the day and night living spaces are more distinct and access to the sea was re-examined.

With a hull low on the water, the Sense 55 offers a satisfying feeling of confidence. Minimal heel, perfect balance under sail and easy manoeuvrability combine to offer surprising sailing speeds and exceptional cruising comfort.

Spacious and flooded with light, the Sense 55 interiors are directly inspired by the world of Super Yachts. Wherever you look your eyes are drawn to the sea and the horizon. The raising of the saloon gently connects the interior and exterior spaces. The choice of woodwork creates very different atmospheres.

The Sense 55 is not content with being seaworthy and safe. The interior and exterior are attractively designed and offer space and materials that create generous room and a delightful new lifestyle at sea.

## Basic Information

---

**Category:** Cruising Sailboat

**Model Year:** 2014

**Year Built:** 2014

**Country:** N/A

## Dimensions

---

**LOA:** 55' (16.76mm)

**LWL:** 52' 3" (15.93mm)

**Beam:** 18.75

**Max Draft:** 78' 5" (23.9mm)

## Speed, Capacities and Weight

---

**Water Capacity:** 256 Gallons

**Fuel Capacity:** 110 Gal Gallons

---

## Accommodations

---

**Total Cabins:** 3

---

## Hull and Deck Information

---

**Hull Material:** Fiberglass

---

## Engine Information

---

**Engines:** 1

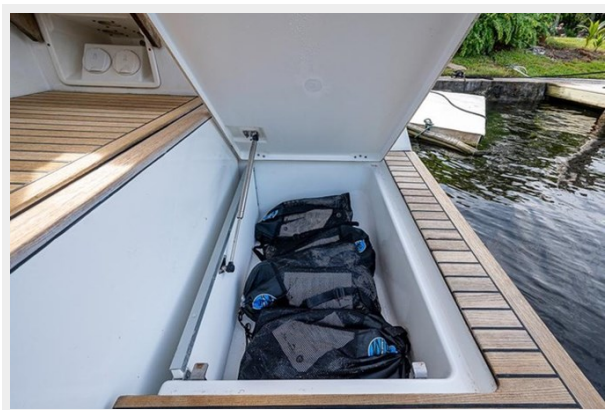
**Manufacturer:** Yanmar

**Engine Type:** Sail Drive

**Fuel Type:** Diesel

# PHOTOS

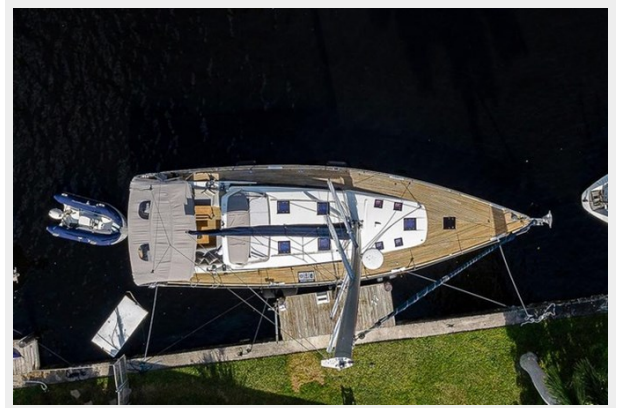












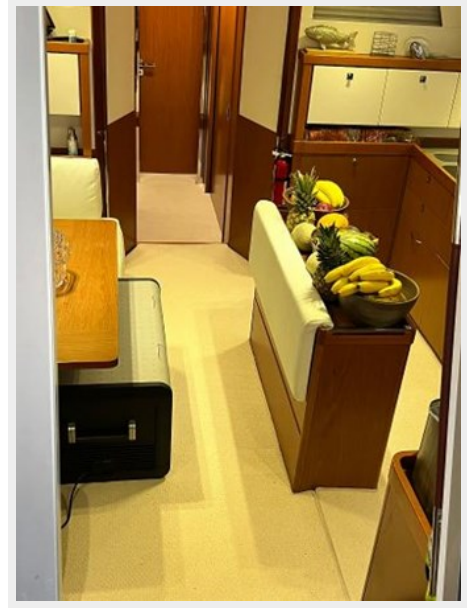


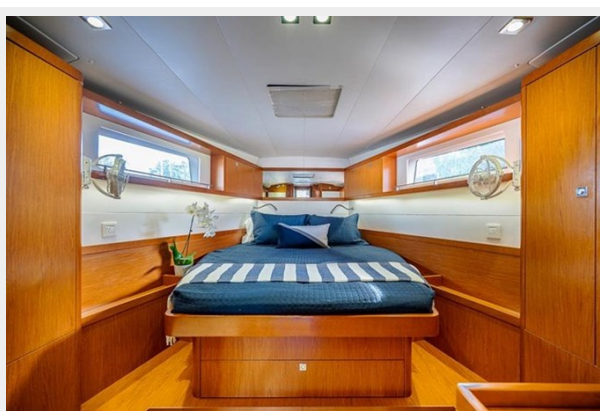






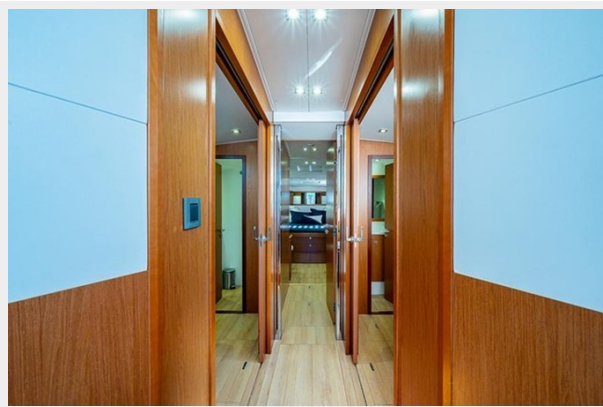


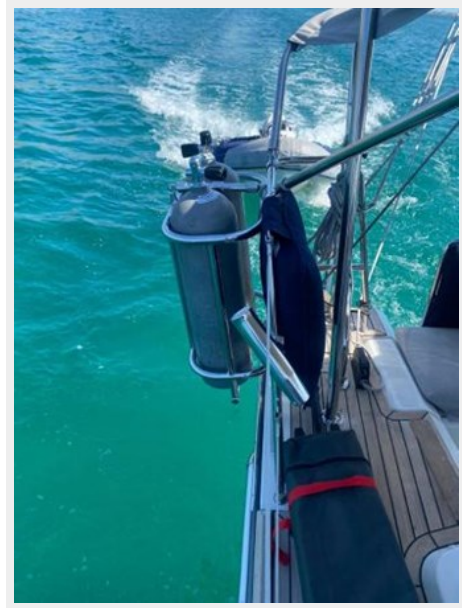
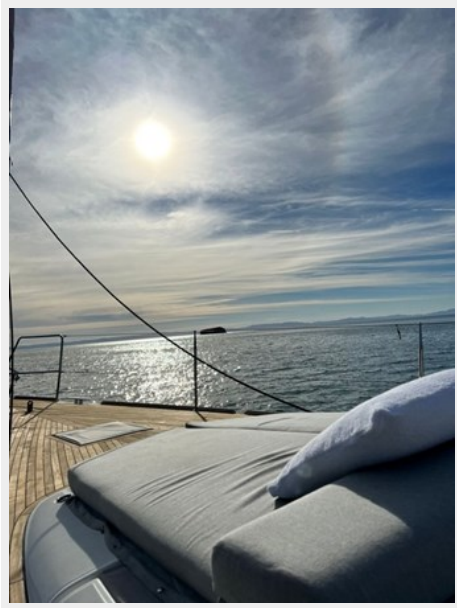














# CONTACTS

---

Andrey Shestakov, leading yacht broker of the sales department of Shestakov Yacht Sales Inc. Shestakov Yacht Sales Inc., the official representative of the Miami/Fort Lauderdale FL headquarters.

## Contact details

---

Email: [andrey@shestakovyachtsales.com](mailto:andrey@shestakovyachtsales.com)

Web: [shestakovyachtsales.com/en/](http://shestakovyachtsales.com/en/)

## Telephones

---

USA: +1(954)274-4435

## Office hours

---

Monday – Saturday: **9:00 - 21:00** EDT

Sunday: **closed**

## Address

---



Harbour Towne Marina, 850 NE 3rd St,  
STE 213, Dania, FL 33004