

1994 NAVIGATOR 5600 SUNDANCE — NAVIGATOR



Builder: NAVIGATOR

Year Built: 1994

Model: Pilothouse

Price: \$239,000 USD

Location: United States

LOA: 59' (17.98mm)

Beam: 15

Max Draft: 4' 6" (1.37mm)

Our experienced yacht broker, Andrey Shestakov, will help you choose and buy a yacht that best suits your needs 1994 Navigator 5600 Sundance — NAVIGATOR from our catalogue. Presently, at Shestakov Yacht Sales Inc., we have a wide variety of yachts available on our sale's list. We also work in close contact with all the big yacht manufacturers from all over the world.

If you would like to buy a yacht 1994 Navigator 5600 Sundance — NAVIGATOR or would like help answering any questions concerning purchasing, selling or chartering a yacht, please call **+1(954)274-4435**

TABLE OF CONTENTS

TABLE OF CONTENTS	2
SPECIFICATIONS	3
Overview	3
Basic Information	3
Dimensions	3
Speed, Capacities and Weight	3
Accommodations	4
Hull and Deck Information	4
Engine Information	4
PHOTOS	5
CONTACTS	9
Contact details	9
Telephones	9
Office hours	9
Address	9

SPECIFICATIONS

Overview

The Sundance 5600 Pilothouse was the largest boat in the growing Navigator fleet when she was introduced in 1993. An enlarged version of her smaller sistership, the Sundance 5300, the additional length of the Sundance 5600 is found in her larger salon dimensions. The Sundance floorplan differs from that of most pilothouse yachts in that the galley is on the pilothouse level rather than in the main salon. The full beam salon of the Sundance is surprisingly spacious in spite of a modest 15-foot beam. For privacy, the master stateroom is accessed directly from the salon (rather than from the forward companionway), and because there is no pilothouse bulkhead, the helmsman has a good view aft. A dinette is opposite the galley in the wheelhouse, and a nearby ladder leads up to the bi-level flybridge with its wraparound guest seating and dinghy storage.

Additional features include port/starboard pilothouse doors, large engine room (accessed from a cockpit hatch), maple cabinets and interior trim, and a roomy cockpit with lazarette storage and transom door, but no flybridge access. This is a freshwater boat, boathouse kept. Incredible condition, come see it today!

Basic Information

Category: Pilothouse

Sub Category: Pilothouse

Model Year: 1994

Year Built: 1994

Country: United States

Dimensions

LOA: 59' (17.98mm)

Beam: 15

Max Draft: 4' 6" (1.37mm)

Speed, Capacities and Weight

Water Capacity: 170 Gallons

Holding Tank: 50 Gal Gallons

Accommodations

Total Heads: 2

Hull and Deck Information

Hull Material: Fiberglass

Engine Information

Engines: 2

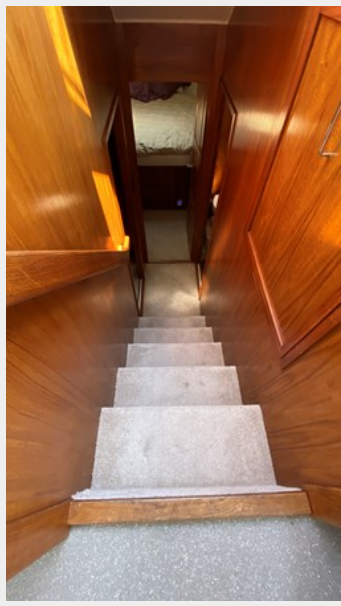
Manufacturer: Volvo Penta

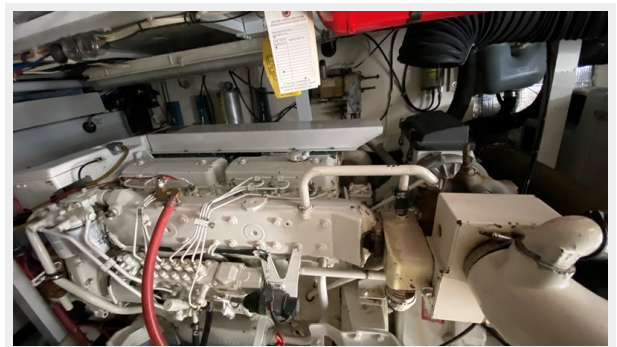
Engine Type: Inboard

Fuel Type: Diesel

PHOTOS









CONTACTS

Andrey Shestakov, leading yacht broker of the sales department of Shestakov Yacht Sales Inc. Shestakov Yacht Sales Inc., the official representative of the Miami/Fort Lauderdale FL headquarters.

Contact details

Email: andrey@shestakovyachtsales.com

Web: shestakovyachtsales.com/en/

Telephones

USA: +1(954)274-4435

Office hours

Monday – Saturday: **9:00 - 21:00** EDT

Sunday: **closed**

Address



Harbour Towne Marina, 850 NE 3rd St,
STE 213, Dania, FL 33004