

SOPHIE — BAVARIA



Builder: BAVARIA

Year Built: 2006

Model: Cruising Sailboat

Price: \$81,500 USD

Location: United States

LOA: 34' 7" (10.54m)

Beam: 11.41

Max Draft: 5' (1.52m)

Our experienced yacht broker, Andrey Shestakov, will help you choose and buy a yacht that best suits your needs **Sophie — BAVARIA** from our catalogue. Presently, at Shestakov Yacht Sales Inc., we have a wide variety of yachts available on our sale's list. We also work in close contact with all the big yacht manufacturers from all over the world.

If you would like to buy a yacht **Sophie — BAVARIA** or would like help answering any questions concerning purchasing, selling or chartering a yacht, please call **+1(954)274-4435**

TABLE OF CONTENTS

TABLE OF CONTENTS	2
SPECIFICATIONS	3
Overview	3
Basic Information	3
Dimensions	3
Speed, Capacities and Weight	3
Accommodations	4
Hull and Deck Information	4
Engine Information	4
PHOTOS	5
CONTACTS	13
Contact details	13
Telephones	13
Office hours	13
Address	13

SPECIFICATIONS

Overview

This 2006 Bavaria 34 Cruiser is located in Westport, Massachusetts and is available for showing. Bavaria's are very solid, sturdy and stable yachts made for cruising above all else. But, the 33 does make for a very comfortable craft for club racing, social twilight racing, or just cruising about. Construction is all solid hand-laid glass reinforced plastic (GRP) below the waterline, with an integral GRP stringer system to which the chainplates are bonded, and Kevlar reinforcing in the bow sections for added strength. The rig comprises a fractional 9/10th deck-stepped aluminum Selden double-spreader stick with a solid vang, roller furling headsail, and in-mast furling main. Key Points:

- A nice cruiser and club racer
- Good value for the money
- A large two-cabin interior with plenty of charm
- Windlass, feathering propeller, electric head and more that other 34 footers don't offer
- Seaworthy and predictable motion
- Built to sail offshore
- Local importers offer excellent support
- Good resale value, owner events and club competition from other Bavaria owners

Basic Information

Category: Cruising Sailboat

Model Year: 2006

Year Built: 2006

Country: United States

Dimensions

LOA: 34' 7" (10.54mm)

LWL: 30' 2" (9.19mm)

Beam: 11.41

Max Draft: 5' (1.52mm)

Speed, Capacities and Weight

Water Capacity: 55 Gallons

Holding Tank: 20 Gal Gallons

Fuel Capacity: 40 Gal Gallons

Accommodations

Total Cabins: 2

Total Berths: 6

Total Heads: 1

Hull and Deck Information

Hull Material: Fiberglass

Engine Information

Engines: 1

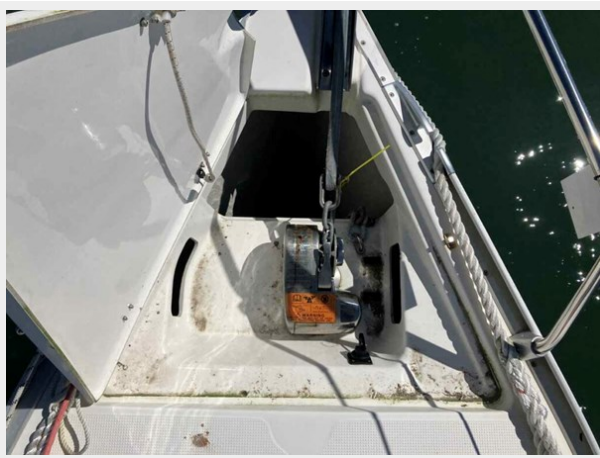
Manufacturer: Volvo Penta

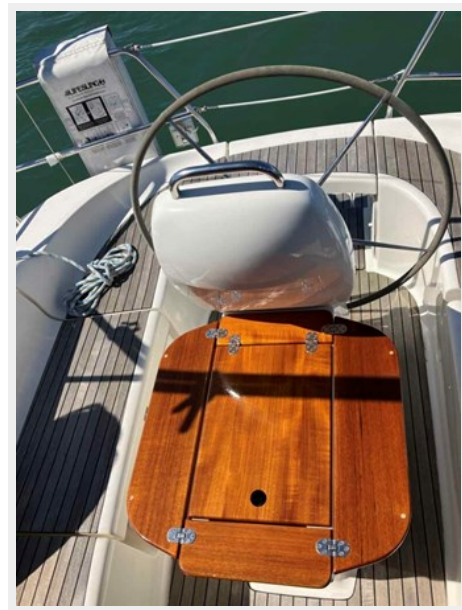
Engine Type: Sail Drive

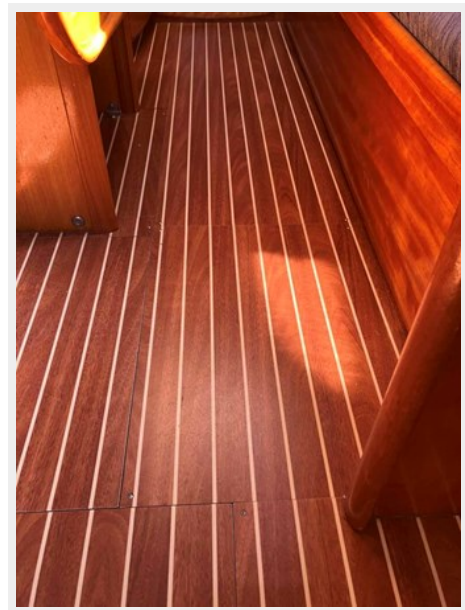
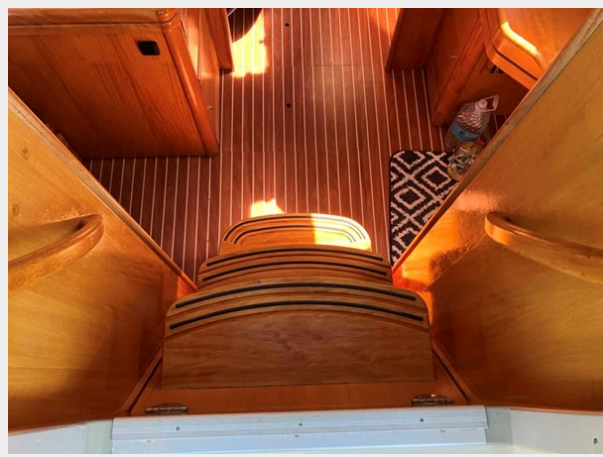
Fuel Type: Diesel

PHOTOS





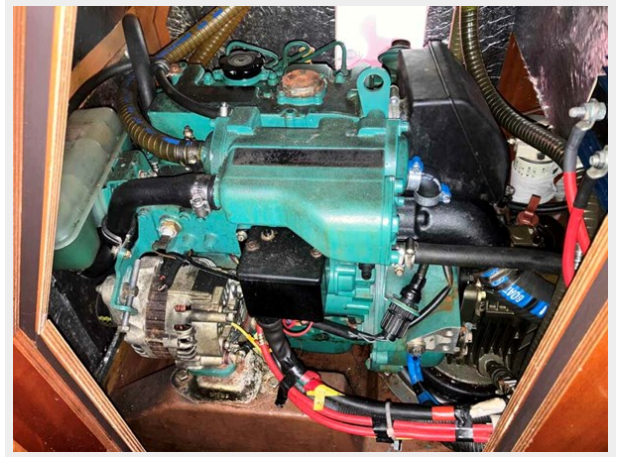












CONTACTS

Andrey Shestakov, leading yacht broker of the sales department of Shestakov Yacht Sales Inc. Shestakov Yacht Sales Inc., the official representative of the Miami/Fort Lauderdale FL headquarters.

Contact details

Email: andrey@shestakovyachtsales.com

Web: shestakovyachtsales.com/en/

Telephones

USA: +1(954)274-4435

Office hours

Monday – Saturday: **9:00 - 21:00** EDT

Sunday: **closed**

Address



Harbour Towne Marina, 850 NE 3rd St,
STE 213, Dania, FL 33004