

DOLPHIN — BREWER



Builder: BREWER

Year Built: 1987

Model: Center Cockpit

Price: \$95,900 USD

Location: United States

LOA: 42' (12.8mm)

Beam: 13.5

Max Draft: 5' 6" (1.68mm)

Our experienced yacht broker, Andrey Shestakov, will help you choose and buy a yacht that best suits your needs **Dolphin — BREWER** from our catalogue. Presently, at Shestakov Yacht Sales Inc., we have a wide variety of yachts available on our sale's list. We also work in close contact with all the big yacht manufacturers from all over the world.

If you would like to buy a yacht **Dolphin — BREWER** or would like help answering any questions concerning purchasing, selling or chartering a yacht, please call **+1(954)274-4435**

TABLE OF CONTENTS

TABLE OF CONTENTS	2
SPECIFICATIONS	3
Overview	3
Basic Information	3
Dimensions	3
Speed, Capacities and Weight	4
Accommodations	4
Hull and Deck Information	4
Engine Information	4
PHOTOS	5
CONTACTS	17
Contact details	17
Telephones	17
Office hours	17
Address	17

SPECIFICATIONS

Overview

Brewer 12.8 42' Cutter Cruiser Center Cockpit The Brewer 12.8 Cutter Cruiser was conceived as a good performing, long distance liveaboard cruiser. The members of the original syndicate which commissioned the Brewer 12.8 were experienced racing and cruising yachtsmen who wanted the livability and layout of the Whitby 42, coupled with a higher performance hull and rig configuration. Ted Brewer created the design from the popular 42 ft Whitby Cruiser – Fort Myers Shipyard was (under license) building the 42 Whitby. This 12.8 Cutter design resulted from the New York Yacht Club's request to Fort Myers Shipyard to build a quantity of 32 Whitby Cruisers with certain modifications, principally:

- A Cutter Rig vs the 42 Whitby Ketch rig.
- Delete the Center Board (the latter resulted in more lead ballast to fill the cavity where the Centerboard was located). Hence more stability.

Note: There are over two hundred 42 Whitby's plying Earth's Seas. Dolphin is a special example the outcome of the efforts to create a comfortable, yet high performing cruiser. She was also treated to good care from her owners through her life and is outfitted for serious cruising. She is very much worthwhile taking the time to make an appointment for a tour!

Basic Information

Category: Center Cockpit

Model Year: 1987

Year Built: 1987

Country: United States

Dimensions

LOA: 42' (12.8mm)

LWL: 33' 9" (10.29mm)

Beam: 13.5

Max Draft: 5' 6" (1.68mm)

Speed, Capacities and Weight

Water Capacity: 200 Gallons

Holding Tank: 38 Gal Gallons

Fuel Capacity: 110 Gal Gallons

Accommodations

Total Cabins: 2

Total Berths: 4

Total Heads: 2

Hull and Deck Information

Hull Material: Fiberglass

Engine Information

Engines: 1

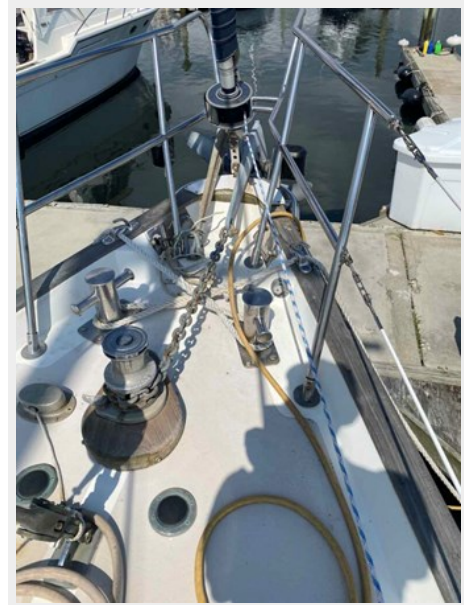
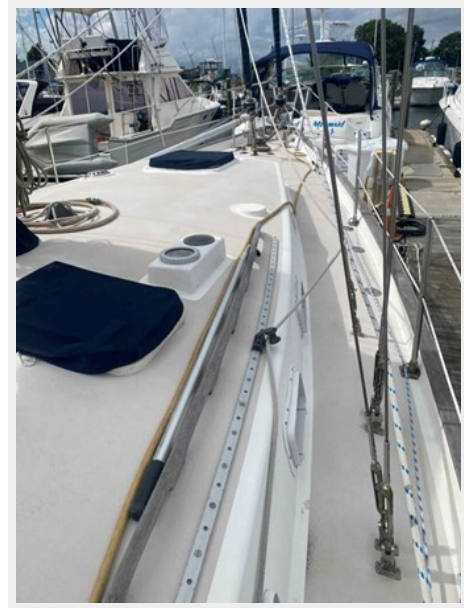
Manufacturer: Perkins

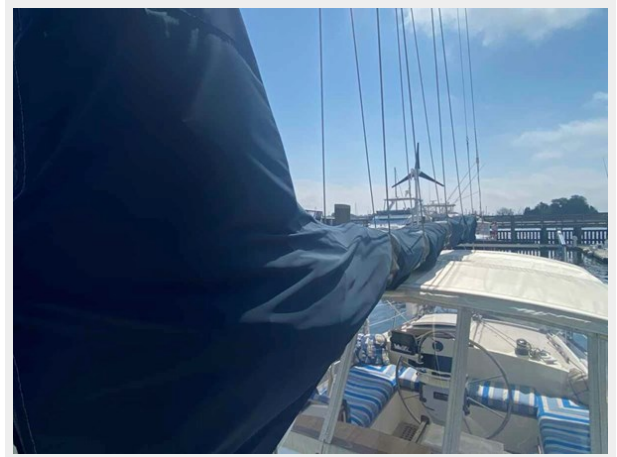
Engine Type: Inboard

Fuel Type: Diesel

PHOTOS



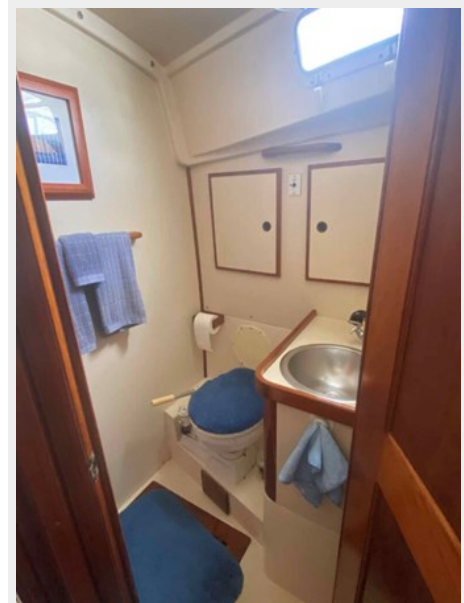










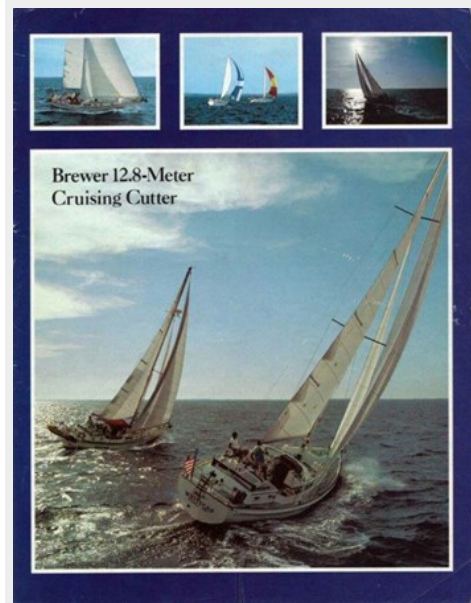












CONTACTS

Andrey Shestakov, leading yacht broker of the sales department of Shestakov Yacht Sales Inc. Shestakov Yacht Sales Inc., the official representative of the Miami/Fort Lauderdale FL headquarters.

Contact details

Email: andrey@shestakovyachtsales.com

Web: shestakovyachtsales.com/en/

Telephones

USA: +1(954)274-4435

Office hours

Monday – Saturday: **9:00 - 21:00** EDT

Sunday: **closed**

Address



Harbour Towne Marina, 850 NE 3rd St,
STE 213, Dania, FL 33004