

HYPNAUTIC — SILVERTON



Builder: SILVERTON

Year Built: 2002

Model: Motor Yacht

Price: \$289,000 CAD

Location: Canada

LOA: 50' 1" (15.27m)

Beam: 15.42

Min Draft: 3' 9" (1.12m)

Max Draft: 4' (1.22m)

Cruise Speed: 25 Knots Kts. (29 MPH)

Max Speed: 33 Knots Kts. (38 MPH)

Our experienced yacht broker, Andrey Shestakov, will help you choose and buy a yacht that best suits your needs **Hypnautic — SILVERTON** from our catalogue. Presently, at Shestakov Yacht Sales Inc., we have a wide variety of yachts available on our sale's list. We also work in close contact with all the big yacht manufacturers from all over the world.

If you would like to buy a yacht **Hypnautic — SILVERTON** or would like help answering any questions concerning purchasing, selling or chartering a yacht, please call **+1(954)274-4435**

TABLE OF CONTENTS

TABLE OF CONTENTS	2
SPECIFICATIONS	4
Overview	4
Basic Information	4
Dimensions	4
Speed, Capacities and Weight	5
Accommodations	5
Hull and Deck Information	5
Engine Information	5
PHOTOS	6
image1	6
silverton-453	6
image2	6
silverton-453 (1)	6
silverton-453 (2)	6
silverton-453 (4)	6
silverton-453 (5)	7
silverton-453 (6)	7
silverton-453 (8)	7
silverton-453 (7)	7
silverton-453 (10)	7
silverton-453 (9)	7
silverton-453 (11)	8
silverton-453 (12)	8
silverton-453 (14)	8
silverton-453 (13)	8
silverton-453 (15)	9
silverton-453 (16)	9

silverton-453 (17)	9
silverton-453 (18)	9
silverton-453 (19)	9
silverton-453 (20)	9
silverton-453 (21)	10
silverton-453 (22)	10
silverton-453 (24)	10
silverton-453 (23)	10
CONTACTS	11
Contact details	11
Telephones	11
Office hours	11
Address	11

SPECIFICATIONS

Overview

No disappointments here! Boasting 3 staterooms, 2 full heads and rich cherry wood finishes throughout, this beautiful 453 has been professionally maintained and shows pride of ownership. Updated with a top of the line Espar diesel furnace and electric fireplace, this is an ideal boat for liveaboards or travelling the loop. The fully enclosed aft deck with new patio furniture is perfect for entertaining and enjoying sundowners after a day on the water. Entering in to the salon, you will fully appreciate Silverton's innovative "sidewalk" step design which maximizes the spacious interior. Step down to the full beam aft stateroom with walk around queen sized bed, abundant storage and an ensuite head with a bath tub! Cooks will enjoy the fully equipped galley with new microwave/air fryer and corner dinette. A side door takes you to the bow where you can relax on the built in seat that converts to a "princess bench" for reclining. The companionway to the midship guest stateroom is lined with upper and lower cabinets and houses a combination washer/dryer. The cabin is the same size as the master aft cabin with a queen size walk around bed and semi ensuite with separate shower. A door from this cabin accesses the walk-in engine room. The V Berth has 2 single berths, a skylight and more storage. The twin 430HP Cummins Diamond Series diesel engines provide comfortable, reliable and economical cruising.

Basic Information

Category: Motor Yacht

Sub Category: Motor Yacht

Model Year: 2002

Year Built: 2002

Country: Canada

Dimensions

LOA: 50' 1" (15.27mm)

Beam: 15.42

Min Draft: 3' 9" (1.12mm)

Max Draft: 4' (1.22mm)

Speed, Capacities and Weight

Cruise Speed: 25 Knots Kts. (29 MPH)

Cruise Speed Range: 400

Max Speed: 33 Knots Kts. (38 MPH)

Max Speed Range: 250 Kts.

Gross Tonnage: 46 Pounds

Water Capacity: 200 Gallons

Holding Tank: 205 Gal Gallons

Fuel Capacity: 612 Gal Gallons

Accommodations

Total Cabins: 3

Total Berths: 6

Sleeps: 6

Total Heads: 2

Hull and Deck Information

Hull Material: Fiberglass

Deck Material: Fiberglass

Hull Configuration: Semi-Displacement

Hull Designer: Silverton

Interior Designer: Silverton

Engine Information

Engines: 2

Manufacturer: Cummins

Fuel Type: Diesel

PHOTOS

silverton-453



image1



image2



silverton-453 (1)



silverton-453 (2)



silverton-453 (4)



silverton-453 (5)



silverton-453 (6)



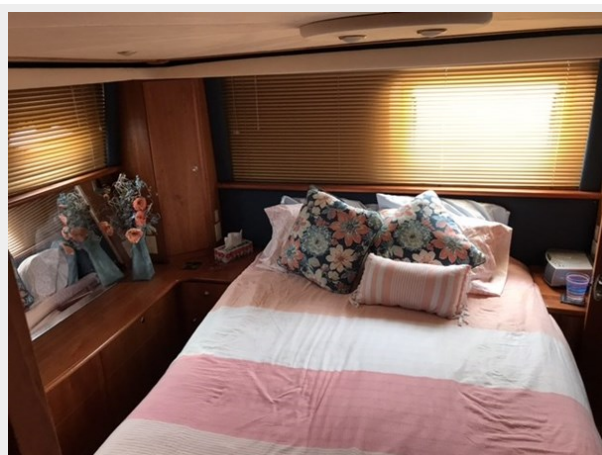
silverton-453 (7)



silverton-453 (8)



silverton-453 (9)



silverton-453 (10)



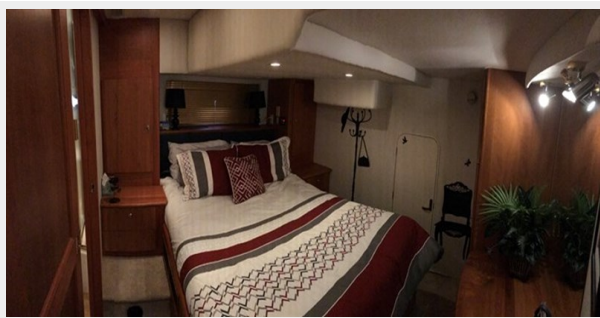
silverton-453 (11)



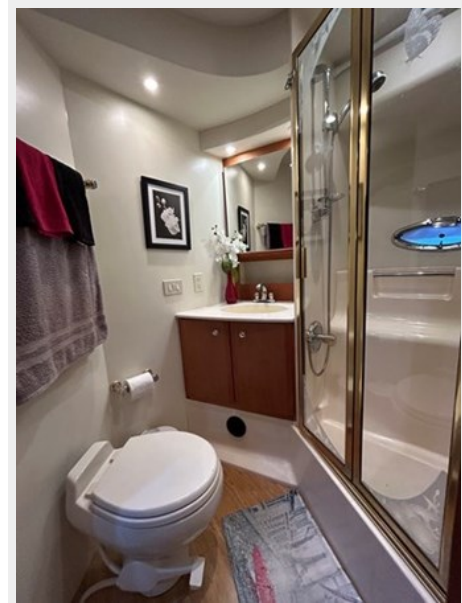
silverton-453 (12)



silverton-453 (13)



silverton-453 (14)



silvertown-453 (15)



silvertown-453 (16)



silvertown-453 (17)



silvertown-453 (18)



silvertown-453 (19)



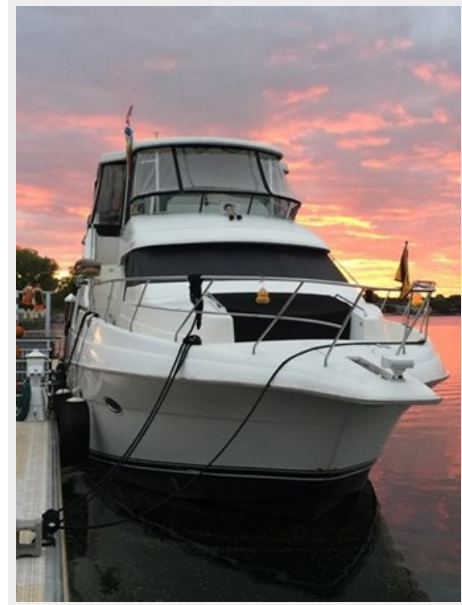
silvertown-453 (20)



silverton-453 (21)



silverton-453 (22)



silverton-453 (23)



silverton-453 (24)



CONTACTS

Andrey Shestakov, leading yacht broker of the sales department of Shestakov Yacht Sales Inc. Shestakov Yacht Sales Inc., the official representative of the Miami/Fort Lauderdale FL headquarters.

Contact details

Email: andrey@shestakovyachtsales.com

Web: shestakovyachtsales.com/en/

Telephones

USA: +1(954)274-4435

Office hours

Monday – Saturday: **9:00 - 21:00** EDT

Sunday: **closed**

Address



Harbour Towne Marina, 850 NE 3rd St,
STE 213, Dania, FL 33004