

AMETHYST — CATALINA



Builder: CATALINA

Year Built: 2002

Model: Cruising Sailboat

Price: \$117,500 CAD

Location: Canada

LOA: 34' 6" (10.52m)

Beam: 11.9

Min Draft: 4' 3" (1.3m)

Max Draft: 4' 3" (1.3m)

Cruise Speed: 6 Knots Kts. (7 MPH)

Our experienced yacht broker, Andrey Shestakov, will help you choose and buy a yacht that best suits your needs **Amethyst — CATALINA** from our catalogue. Presently, at Shestakov Yacht Sales Inc., we have a wide variety of yachts available on our sale's list. We also work in close contact with all the big yacht manufacturers from all over the world.

If you would like to buy a yacht **Amethyst — CATALINA** or would like help answering any questions concerning purchasing, selling or chartering a yacht, please call **+1(954)274-4435**

TABLE OF CONTENTS

TABLE OF CONTENTS	2
SPECIFICATIONS	5
Overview	5
Basic Information	5
Dimensions	5
Speed, Capacities and Weight	5
Accommodations	5
Hull and Deck Information	6
Engine Information	6
PHOTOS	7
Annotation 2023-11-20 225044	7
Annotation 2023-11-20 225252	7
Annotation 2023-11-20 225136	7
Annotation 2023-11-20 225203	7
Annotation 2023-11-20 225350	8
Annotation 2023-11-20 225317	8
Aft cabin IMG_5146	8
Autopilot IMG_5134	8
Axiom 9 plotter & keypad IMG_5114	9
Battery selector switches & breakers IMG_5161	9
Bow from dock	9
catalina_34_mkii_drawing-534x1024	9
catalina-yachts-catalina-34-mkii-interior-2-mini	10
catalina-yachts-catalina-34-mkii-sailplan-1-mini	10
Cockpit - aft IMG_5118	10
Cockpit canvas storage IMG_5140	10
Cockpit drinks holder IMG_5144	11
Cockpit table & Dodger handrails IMG_5145	11

Cruising spinnaker IMG_5135	11
Dining table IMG_5131	11
Engine IMG_5152	12
Engine instruments IMG_5128	12
Foredeck IMG_5124	12
Forward cabiin IMG_5133	12
Fwd cabin folding door IMG_5139	13
Fwd cabin stowage IMG_5137	13
Head IMG_5150	13
In crade - bow section IMG_5110	13
In cradle - 6-post folding cradle IMG_5112	14
Instruments in navpod IMG_5115	14
Nav station IMG_5142	14
Lewmar 48 CST primary winches IMG_5120	14
Nav stn IMG_5154	15
On cradle from stern IMG_5108	15
Pit - port side IMG_5122	15
Pit - stbd side IMG_5121	15
Stbd deck loiking aft from foredeck IMG_5126	16
Salon upholstery IMG_5143	16
thumbnail_3-blade fixed prop IMG_5109	16
thumbnail_437 engine hours IMG_5130	16
thumbnail_Aft cabin IMG_5146	17
thumbnail_Anchor locker details IMG_5125	17
thumbnail_boat2	17
thumbnail_boat1	17
thumbnail_boat3	18
thumbnail_boat4	18
thumbnail_boat5	18

thumbnail_boat6	18
CONTACTS	19
Contact details	19
Telephones	19
Office hours	19
Address	19

SPECIFICATIONS

Overview

Amethyst is a sought after wing keel version of this popular cruiser. This is a well equipped yacht that is in great shape with plenty of new updates and low engine hours. This yacht has always been sailed in freshwater, and has only had two owners since purchased new from Swans.

Basic Information

Category: Cruising Sailboat

Model Year: 2002

Year Built: 2002

Country: Canada

Dimensions

LOA: 34' 6" (10.52mm)

Beam: 11.9

Min Draft: 4' 3" (1.3mm)

Max Draft: 4' 3" (1.3mm)

Speed, Capacities and Weight

Cruise Speed: 6 Knots Kts. (7 MPH)

Gross Tonnage: 10 Pounds

Water Capacity: 65 Gallons

Holding Tank: 18 Gal Gallons

Fuel Capacity: 24 Gal Gallons

Accommodations

Total Cabins: 2

Total Berths: 3

Sleeps: 6

Total Heads: 1

Hull and Deck Information

Hull Material: Fiberglass

Deck Material: Fiberglass

Hull Configuration: Monohull

Hull Designer: Catalina Design

Interior Designer: Catalina Design

Engine Information

Engines: 1

Manufacturer: Universal

Engine Type: Inboard

Fuel Type: Diesel

PHOTOS

Annotation 2023-11-20 225044



Annotation 2023-11-20 225252

Catalina Yachts
21200 Victory Blvd., Woodland Hills, CA 91367
Phone (818) 884-7700 • Fax (818) 884-3810
<http://www.catalinayachts.com>

Sold and Serviced by:

Catalina 34mkII Principal Specifications

Length Overall 10.87m 35' 8"

Length of Hull 10.52m 34' 6"

Length at Waterline 9.09m 29' 10"

Beam 3.58m 11' 9"

Draft Fin Keel 1.70m 5' 7"

Wing Keel 1.30m 4' 3"

Ballast Fin Keel 2208kg 5000 lbs

Wing Keel 2540kg 5600 lbs

Approx. Basic Wt.

Fin Keel 5420kg 11,950lbs

Wing Keel 5693kg 12,550 lbs

Engine Diesel

4 cylinder 26.1 kW 35 hp

Sail Area Standard Rig

Manual Rated 21.46m² 231 sq.ft.

Total (100% foretriangle) 49.05m² 528 sq.ft.

I 13.41m 44' 0"

J 4.11m 13' 6"

P 11.73m 38' 6"

E 3.66m 12' 0"

Sail Area Tall Rig

Manual Rated 22.57m² 243 sq.ft.

Total (100% foretriangle) 51.46m² 554 sq.ft.

I 14.02m 46' 0"

J 4.11m 13' 6"

P 12.34m 40' 6"

E 3.66m 12' 0"

All measurements are approximate and subject to change without notice.

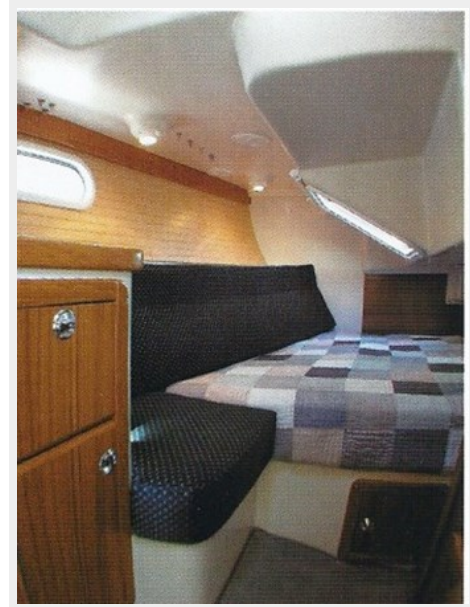
Annotation 2023-11-20 225136



Annotation 2023-11-20 225203



Annotation 2023-11-20 225350



Annotation 2023-11-20 225317



Aft cabin IMG_5146



Autopilot IMG_5134



Axiom 9 plotter & keypad IMG_5114



**Battery selector switches & breakers
IMG_5161**



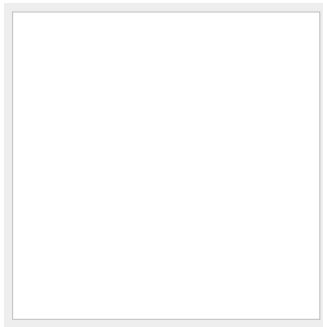
Bow from dock



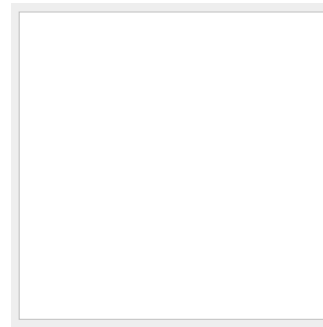
catalina_34_mkii_drawing-534x1024



**catalina-yachts-catalina-34-mkii-interior-2-
mini**



**catalina-yachts-catalina-34-mkii-sailplan-1-
mini**



Cockpit - aft IMG_5118



Cockpit canvas storage IMG_5140



Cockpit drinks holder IMG_5144



Cockpit table & Dodger handrails IMG_5145



Cruising spinnaker IMG_5135



Dining table IMG_5131



Engine IMG_5152



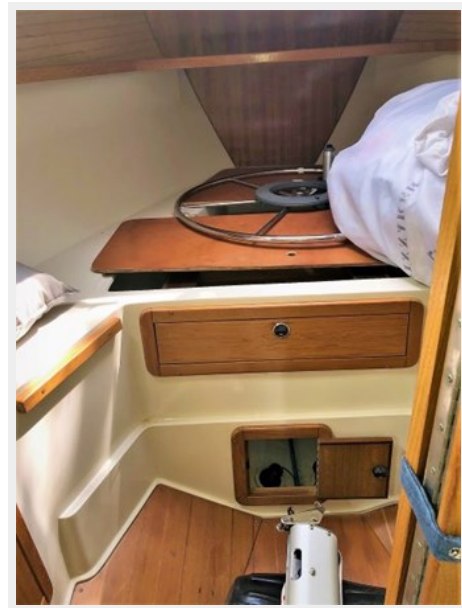
Engine instruments IMG_5128



Foredeck IMG_5124



Forward cabin IMG_5133



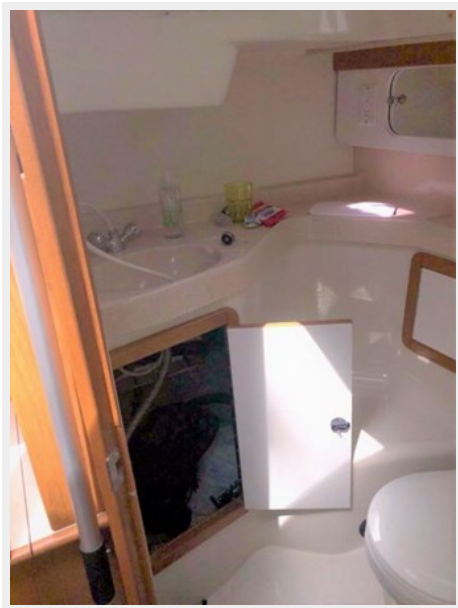
Fwd cabin folding door IMG_5139



Fwd cabin stowage IMG_5137



Head IMG_5150



In cradle - bow section IMG_5110



In cradle - 6-post folding cradle IMG_5112



Instruments in navpod IMG_5115



Lewmar 48 CST primary winches IMG_5120



Nav station IMG_5142



Nav stn IMG_5154



On cradle from stern IMG_5108



Pit - port side IMG_5122



Pit - stbd side IMG_5121



Salon upholstery IMG_5143



Stbd deck looking aft from foredeck
IMG_5126



thumbnail_3-blade fixed prop IMG_5109



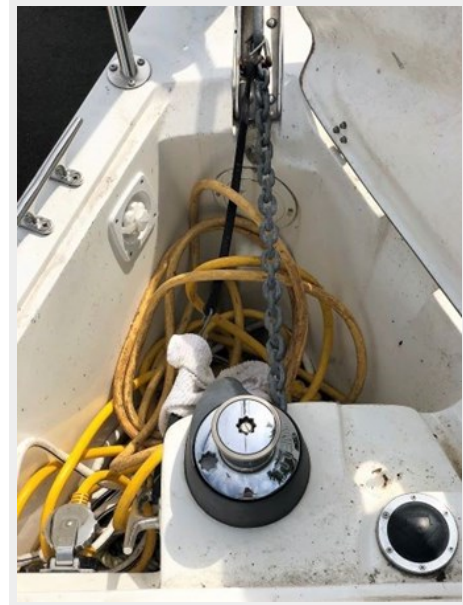
thumbnail_437 engine hours IMG_5130



thumbnail_Aft cabin IMG_5146



thumbnail_Anchor locker details IMG_5125



thumbnail_boat1



thumbnail_boat2



thumbnail_boat3



thumbnail_boat4



thumbnail_boat5



thumbnail_boat6



CONTACTS

Andrey Shestakov, leading yacht broker of the sales department of Shestakov Yacht Sales Inc. Shestakov Yacht Sales Inc., the official representative of the Miami/Fort Lauderdale FL headquarters.

Contact details

Email: andrey@shestakovyachtsales.com

Web: shestakovyachtsales.com/en/

Telephones

USA: +1(954)274-4435

Office hours

Monday – Saturday: **9:00 - 21:00** EDT

Sunday: **closed**

Address



Harbour Towne Marina, 850 NE 3rd St,
STE 213, Dania, FL 33004