

NOE — COUACH



Builder: COUACH

Year Built: 2013

Model: Motor Yacht

Price: €2,900,000 EUR

Location: France

LOA: 93' 10" (28.6mm)

Beam: 21.32

Min Draft: 4' 4" (1.3mm)

Max Draft: 4' 4" (1.3mm)

Cruise Speed: 28 Knots Kts. (32 MPH)

Max Speed: 38 Knots Kts. (44 MPH)

Our experienced yacht broker, Andrey Shestakov, will help you choose and buy a yacht that best suits your needs **NOE — COUACH** from our catalogue. Presently, at Shestakov Yacht Sales Inc., we have a wide variety of yachts available on our sale's list. We also work in close contact with all the big yacht manufacturers from all over the world.

If you would like to buy a yacht **NOE — COUACH** or would like help answering any questions concerning purchasing, selling or chartering a yacht, please call **+1(954)274-4435**

TABLE OF CONTENTS

TABLE OF CONTENTS	2
SPECIFICATIONS	4
Overview	4
Basic Information	4
Dimensions	4
Speed, Capacities and Weight	4
Accommodations	4
Hull and Deck Information	5
Engine Information	5
PHOTOS	6
noe-motor-yacht-guy-couach-2800-open_003	6
noe-motor-yacht-guy-couach-2800-open_002	6
noe-motor-yacht-guy-couach-2800-open_005	6
noe-motor-yacht-guy-couach-2800-open_007	6
large_4057785	6
noe-motor-yacht-guy-couach-2800-open_006	6
large_4057787	7
large_4057780	7
large_4057788	7
large_4057789	7
large_4057801	8
large_4057802	8
large_4057805	8
large_4057800	8
noe-motor-yacht-guy-couach-2800-open_0011	8
CONTACTS	9
Contact details	9
Telephones	9

Office hours

9

Address

9

SPECIFICATIONS

Overview

•Stabilizers underway & at anchor•Pristine condition•Sporty and seaworthy•Big aft platform•Low engine and generators hours•Privately used, same owner since new

Basic Information

Category: Motor Yacht

Sub Category: Motor Yacht

Model Year: 2013

Year Built: 2013

Country: France

Dimensions

LOA: 93' 10" (28.6mm)

Beam: 21.32

Min Draft: 4' 4" (1.3mm)

Max Draft: 4' 4" (1.3mm)

Speed, Capacities and Weight

Cruise Speed: 28 Knots Kts. (32 MPH)

Max Speed: 38 Knots Kts. (44 MPH)

Gross Tonnage: 68 Pounds

Water Capacity: 1500 Gallons

Holding Tank: 462.3 Gal Gallons

Fuel Capacity: 2245.46 Gal Gallons

Accommodations

Total Cabins: 4

Total Berths: 8

Sleeps: 8

Total Heads: 4

Crew Cabin: 2

Crew Berths: 2

Crew Heads: 1

Hull and Deck Information

Hull Material: GRP

Deck Material: Teak

Hull Configuration: Monohull

Hull Designer: Guy Couach

Interior Designer: Guy Couach

Engine Information

Engines: 2

Manufacturer: MTU

Engine Type: Inboard

Fuel Type: Diesel

PHOTOS

**noe-motor-yacht-guy-couach-2800-
open_003**



**noe-motor-yacht-guy-couach-2800-
open_002**



**noe-motor-yacht-guy-couach-2800-
open_005**



**noe-motor-yacht-guy-couach-2800-
open_007**



large_4057785

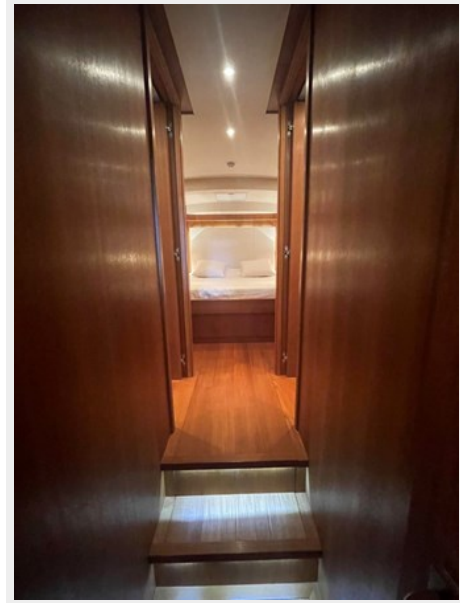
**noe-motor-yacht-guy-couach-2800-
open_006**



large_4057780



large_4057787



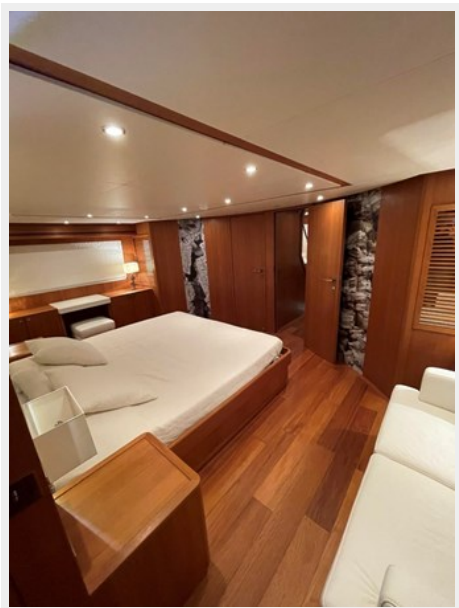
large_4057788



large_4057789



large_4057801

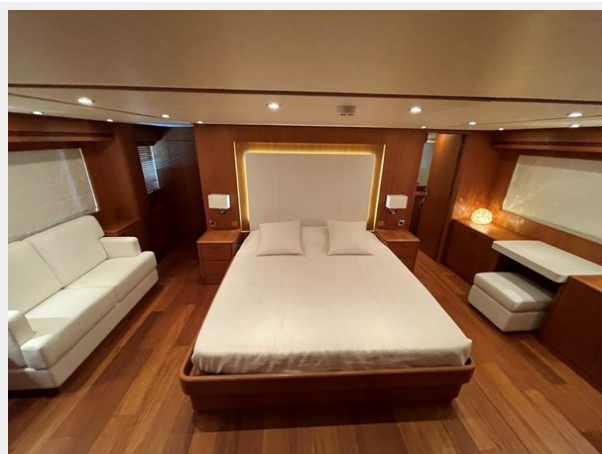


large_4057802

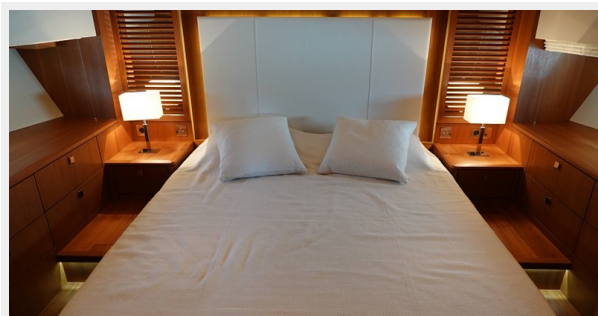


large_4057805

large_4057800



noe-motor-yacht-guy-couach-2800-open_0011



CONTACTS

Andrey Shestakov, leading yacht broker of the sales department of Shestakov Yacht Sales Inc. Shestakov Yacht Sales Inc., the official representative of the Miami/Fort Lauderdale FL headquarters.

Contact details

Email: andrey@shestakovyachtsales.com

Web: shestakovyachtsales.com/en/

Telephones

USA: +1(954)274-4435

Office hours

Monday – Saturday: **9:00 - 21:00** EDT

Sunday: **closed**

Address



Harbour Towne Marina, 850 NE 3rd St,
STE 213, Dania, FL 33004