

TRUANT — VICEM



Builder: VICEM

Year Built: 2007

Model: cruiser

Price: \$975,000 USD

Location: United States

LOA: 70' (21.34mm)

Beam: 18.41

Min Draft: 5' 6" (1.68mm)

Max Draft: 5' 6" (1.68mm)

Cruise Speed: 23 Knots Kts. (26 MPH)

Max Speed: 28 Knots Kts. (32 MPH)

Our experienced yacht broker, Andrey Shestakov, will help you choose and buy a yacht that best suits your needs **TRUANT — VICEM** from our catalogue. Presently, at Shestakov Yacht Sales Inc., we have a wide variety of yachts available on our sale's list. We also work in close contact with all the big yacht manufacturers from all over the world.

If you would like to buy a yacht **TRUANT — VICEM** or would like help answering any questions concerning purchasing, selling or chartering a yacht, please call **+1(954)274-4435**

TABLE OF CONTENTS

TABLE OF CONTENTS	2
SPECIFICATIONS	3
Overview	3
Basic Information	3
Dimensions	4
Speed, Capacities and Weight	4
Accommodations	4
Hull and Deck Information	4
Engine Information	4
PHOTOS	5
CONTACTS	18
Contact details	18
Telephones	18
Office hours	18
Address	18

SPECIFICATIONS

Overview

Welcome to our presentation of "TRUANT", a spectacular downeast flybridge yacht that surpasses all expectations. The product of three design teams working together, over two years, to develop a truly custom yacht which must be seen to be fully appreciated. "TRUANT" is captain maintained and managed, has received annual services and is ready for her next adventure.

This Vicem 70 Classic Flybridge was constructed for a discriminating yachtsman and incorporated an impressive list of options and custom upgrades.

A few notable features:

- Three Cabins w/ three heads
- Additional Crew cabin w/ Crew head
- High gloss Mahogany interior
- Incredible Italian tile in several applications
- Gourmet Galley with Aphrodite Granite counter and island surfaces
- Varnished Teak Transom
- Hydraulic Teak Swim Platform
- Large cockpit with abundant seating and amenities
- Expansive flybridge w/ oval dinette
- Updated Simrad navigation electronics
- Updated Entertainment systems
- MAN 1365hp common rail turbo diesels for exceptional performance
- Onan Generators (2)

Basic Information

Category: cruiser

Sub Category: Downeast

Model Year: 2007

Year Built: 2007

Country: United States

Dimensions

LOA: 70' (21.34mm)

LWL: 67' (20.42mm)

Beam: 18.41

Min Draft: 5' 6" (1.68mm)

Max Draft: 5' 6" (1.68mm)

Speed, Capacities and Weight

Cruise Speed: 23 Knots Kts. (26 MPH)

Max Speed: 28 Knots Kts. (32 MPH)

Water Capacity: 435 Gallons

Holding Tank: 125 Gal Gallons

Fuel Capacity: 1185 Gal Gallons

Accommodations

Total Cabins: 3

Total Berths: 8

Total Heads: 4

Hull and Deck Information

Hull Material: Fiberglass

Engine Information

Engines: 2

Manufacturer: MAN

Engine Type: Inboard

Fuel Type: Diesel

PHOTOS



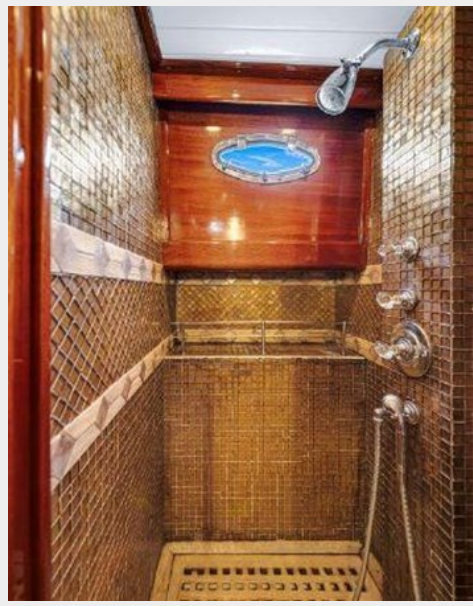






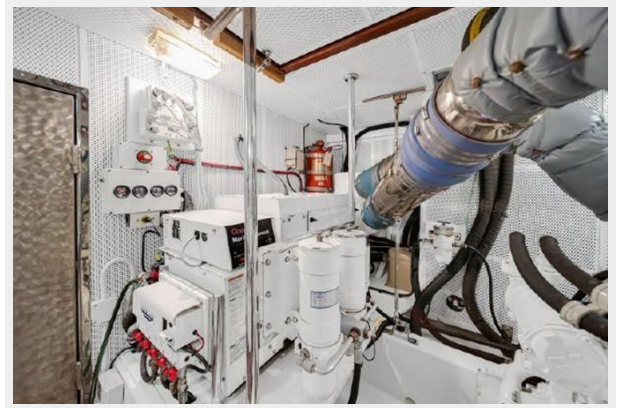
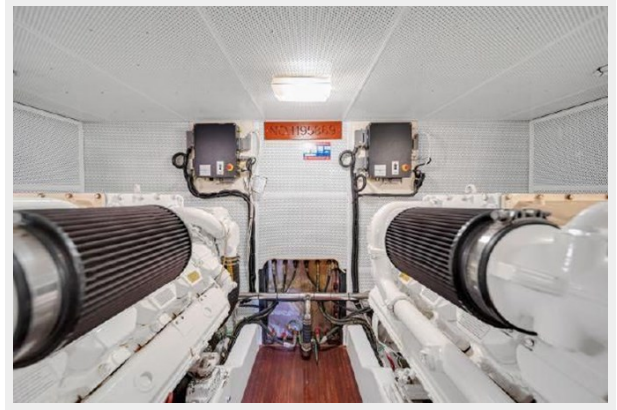


















CONTACTS

Andrey Shestakov, leading yacht broker of the sales department of Shestakov Yacht Sales Inc. Shestakov Yacht Sales Inc., the official representative of the Miami/Fort Lauderdale FL headquarters.

Contact details

Email: andrey@shestakovyachtsales.com

Web: shestakovyachtsales.com/en/

Telephones

USA: +1(954)274-4435

Office hours

Monday – Saturday: **9:00 - 21:00** EDT

Sunday: **closed**

Address



Harbour Towne Marina, 850 NE 3rd St,
STE 213, Dania, FL 33004